

63027

U.S. PUBLIC LAND SURVEY MONUMENT RECORD - GRANT COUNTY, WI

Section 4, Town 6 North Range 3 West, Town of Mount Ida (a)

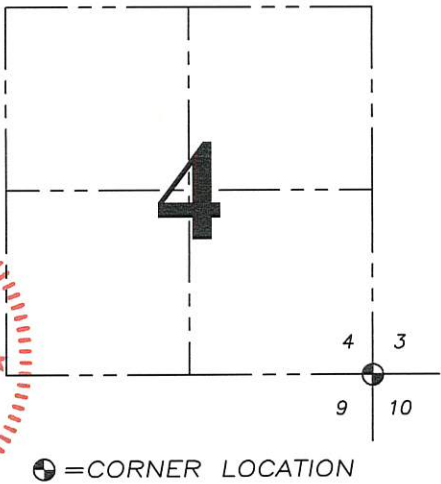
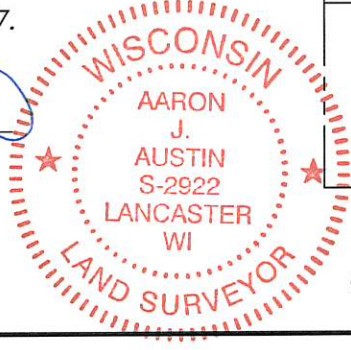
NOTE: This form is intended and designed to fulfill all requirements of the Wisconsin Administrative Code Chapter A-E 7.08, U.S. Public Land Survey Monument Record (3) (a) (b) (c) (d) (e) (f) (g) (h) (i).

CERTIFICATE: (i)

I, Aaron J. Austin, Wisconsin Professional Land Surveyor, do hereby certify that the corner location on this record was determined by me and/or under my direct supervision and that this U.S. Public Land Survey Monument Record is correct and complete to the best of my knowledge and belief.

Dated this 12th day of October, 2017.

Aaron J. Austin
Aaron J. Austin, S-2922



⊕ = CORNER LOCATION

HISTORY OF CORNER ESTABLISHMENT:

Original corner was set in 1833 by Harvey Parke.
Larry Austin reset the corner 4/17/1999 and filed a Survey Monument Record

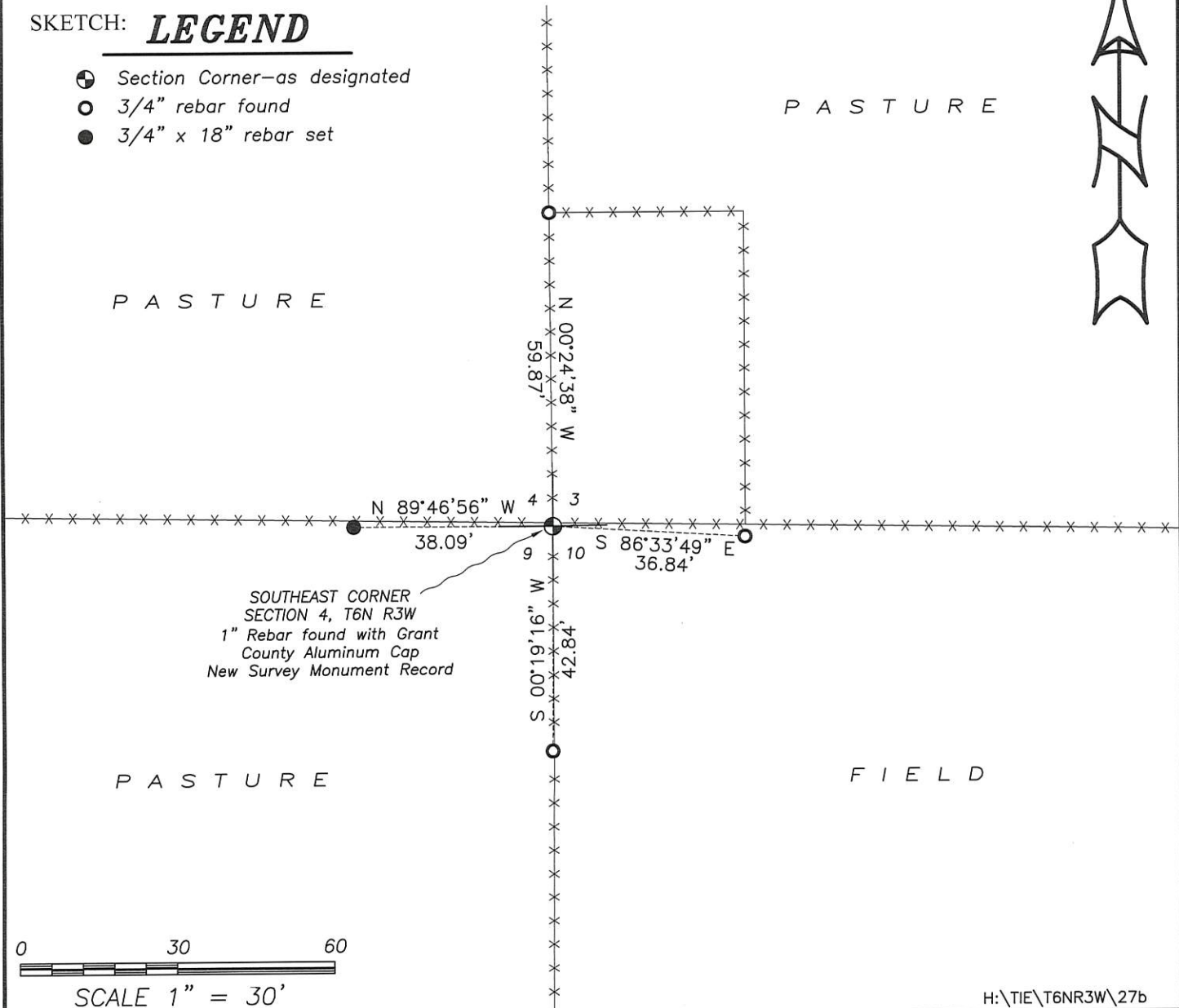
DESCRIPTION OF CORNER EVIDENCE FOUND: (b) (f) (g) (h)

I found the corner and three witness monuments set by Larry. I set one additional witness monument after the corners location was verified with G.P.S. and E.D.M. methods.

DESCRIPTION OF CORNER AND WITNESS MONUMENTS, references and accessories used to perpetuate the original or re-established location of this corner. (c) (d) (e)
Witnesses to corner location Shane Austin. Drawn by Owen Austin.

SKETCH: **LEGEND**

- ⊕ Section Corner—as designated
- 3/4" rebar found
- 3/4" x 18" rebar set



GRANT COUNTY CERTIFIED LAND CORNER

CORNER NO. 27

CERTIFICATE:

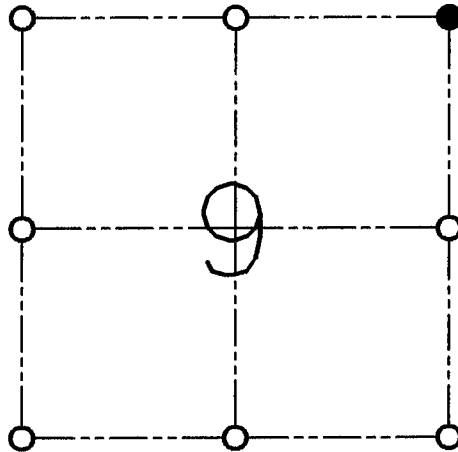
I, LARRY L. AUSTIN, DO HEREBY CERTIFY THAT ON FIRST DAY OF APRIL, 1999, I FOUND OCCUPIED EVIDENCE OF THE NORTHEAST CORNER OF SECTION 9, TOWN 6 NORTH, RANGE 3 WEST, OF THE FOURTH PRINCIPAL MERIDIAN, AND I RE-ESTABLISHED SAID CORNER ACCORDING TO THE WISCONSIN STATUTES AS SHOWN AND DESCRIBED HEREON.

DATED THIS SEVENTH DAY OF APRIL, 1999

Larry L. Austin
LARRY L. AUSTIN S-1903



SEAL



● = CORNER LOCATION

**NORTHEAST CORNER
SECTION 9, T 6 N R 3 W
TOWN OF MOUNT IDA**

HISTORY OF ORIGINAL CORNER ESTABLISHMENT:

CORNER WAS SET IN 1833 BY HARVEY PARKE.

DESCRIPTION OF CORNER EVIDENCE FOUND:

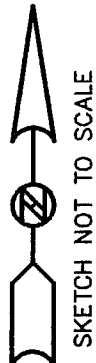
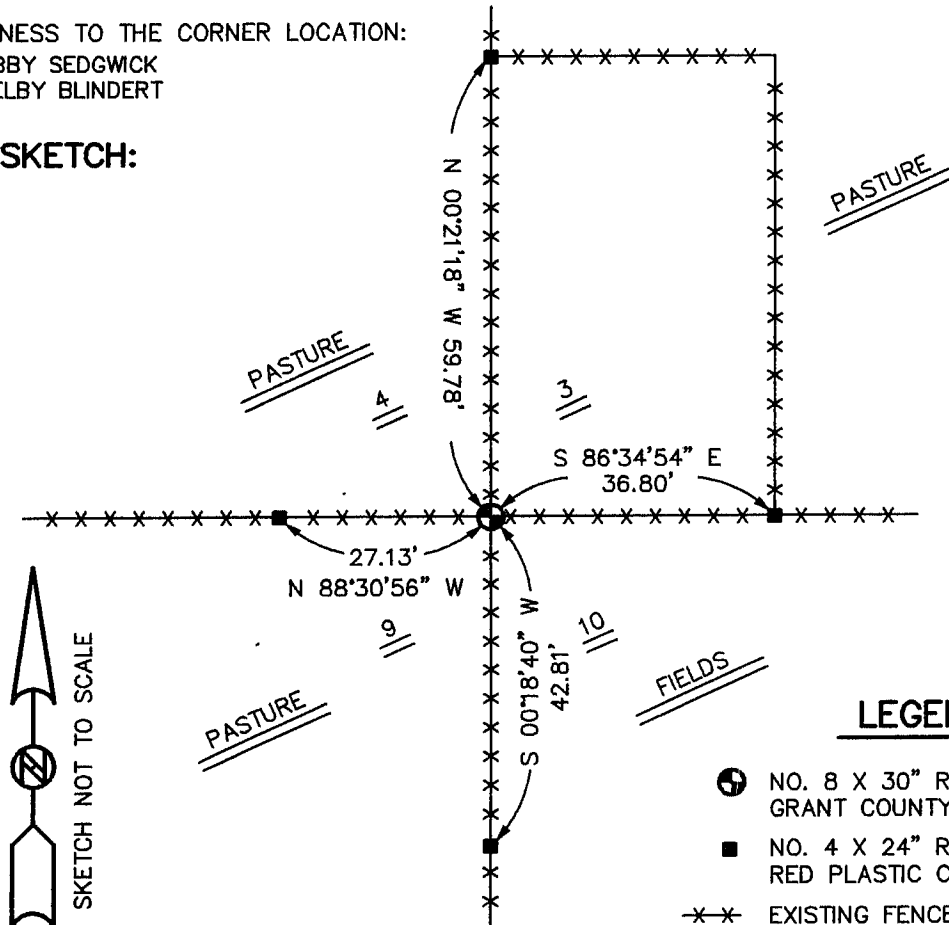
I FOUND AN OCCUPIED FENCE CORNER AT THIS LOCATION AND ACCEPTED ITS LOCATION AFTER AN E.D.M. AND G.P.S. TRAVERSE OF THE AREA.

DESCRIPTION OF CORNER AND WITNESS MONUMENTS, REFERENCES AND ACCESSORIES USED TO PERPETUATE THE ORIGINAL OR RE-ESTABLISHED LOCATION OF THIS CORNER:

WITNESS TO THE CORNER LOCATION:

BOBBY SEDGWICK
SHELBY BLINDERT

SKETCH:



LEGEND

- NO. 8 X 30" REBAR SET WITH GRANT COUNTY ALUMINUM CAP
- NO. 4 X 24" REBAR SET WITH RED PLASTIC CAP
- *—*— EXISTING FENCE