

63026

# U.S. PUBLIC LAND SURVEY MONUMENT RECORD - GRANT COUNTY, WI

Section 10, Town 6 North Range 3 West, Town of Mount Ida (a)

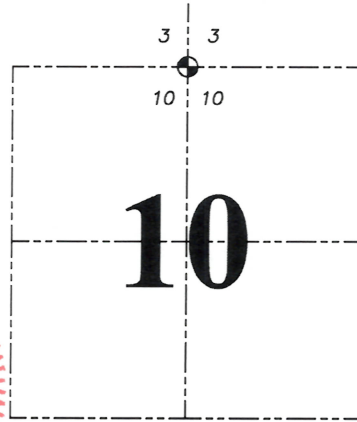
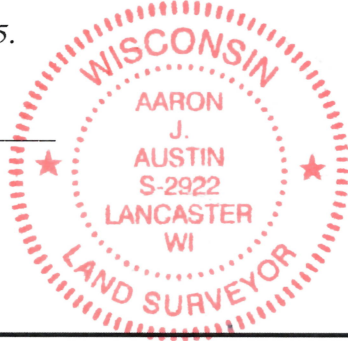
NOTE: This form is intended and designed to fulfill all requirements of the Wisconsin Administrative Code Chapter A-E 7.08, U.S. Public Land Survey Monument Record (3) (a) (b) (c) (d) (e) (f) (g) (h) (i).

**CERTIFICATE:** (i)

I, Aaron J. Austin, Wisconsin Professional Land Surveyor, do hereby certify that the corner location on this record was determined by me and/or under my direct supervision and that this U.S. Public Land Survey Monument Record is correct and complete to the best of my knowledge and belief.

Dated this 22nd day of July, 2025.

*Aaron J. Austin*  
Aaron J. Austin, PLS-2922



⊙ = CORNER LOCATION

Grant County Coordinates:  
NAD 83 (2011)  
Northing: 585,390.28  
Easting: 817,590.52

HISTORY OF CORNER ESTABLISHMENT:

Original corner was set in 1833 by Harvey Parke.  
Bruce Bowden set a Grant County Aluminum Monument and prepared a Survey Monument Record dated 7-25-1987.

DESCRIPTION OF CORNER EVIDENCE FOUND: (b) (f) (g) (h)

I found the Aluminum Monument and one witness corner Bowden set. I set three witness corners and verified the Monument's location with G.P.S. and E.D.M. methods.

DESCRIPTION OF CORNER AND WITNESS MONUMENTS, references and accessories used to perpetuate the original or re-established location of this corner. (c) (d) (e)

Witnesses to corner location Owen Austin, Tanner Austin.  
Drawn by: Owen Austin.

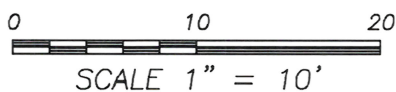
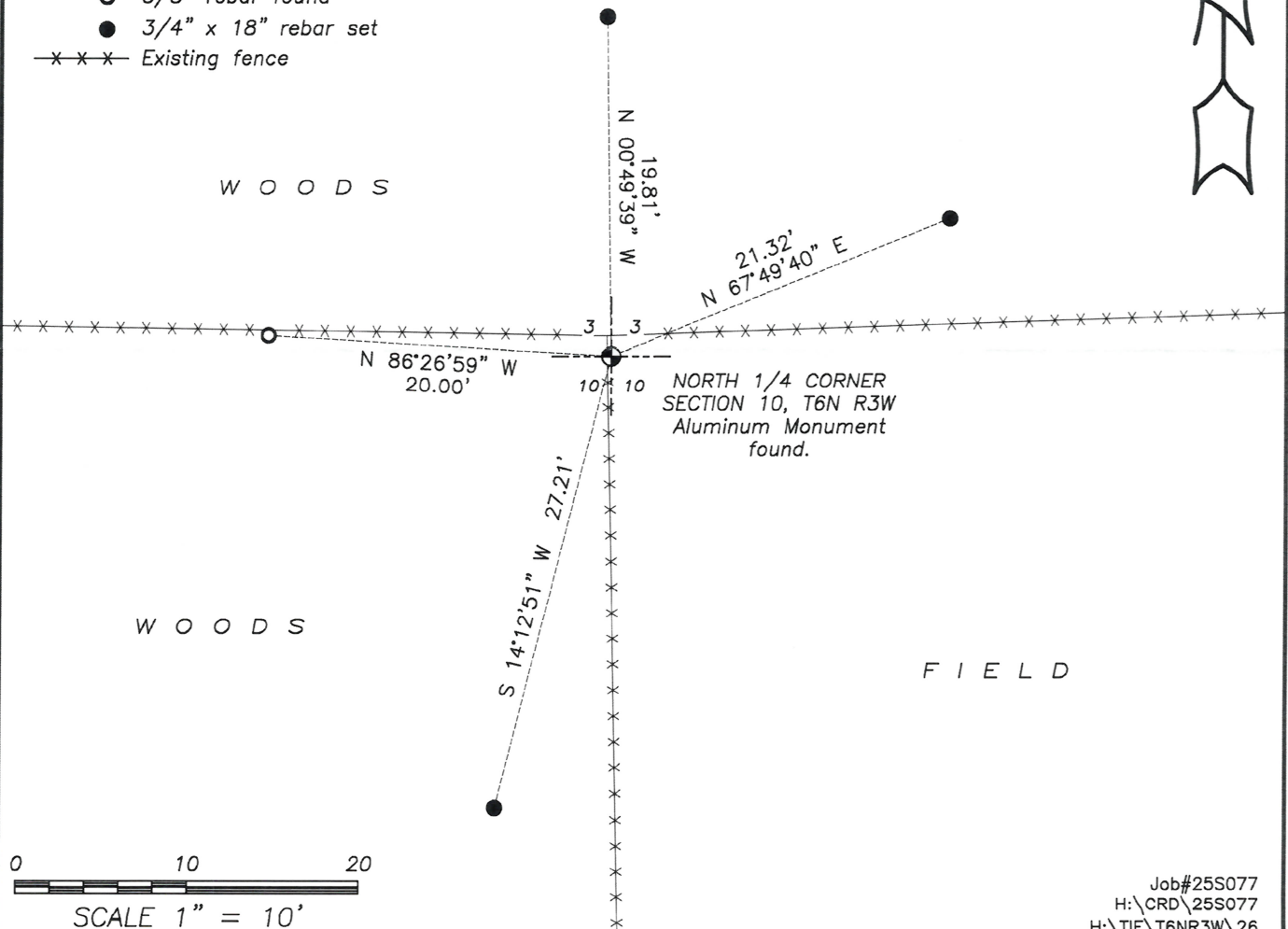
SKETCH:

## LEGEND

- ⊙ Section Corner—as designated
- 3/8" rebar found
- 3/4" x 18" rebar set
- x-x-x- Existing fence

W O O D S

W O O D S



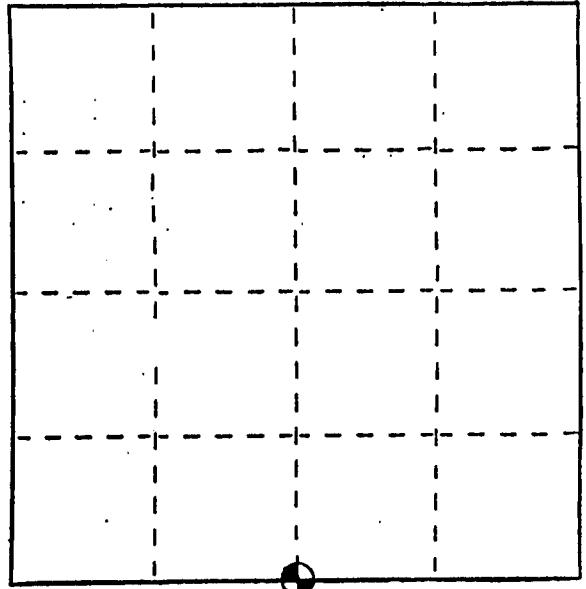
Job#25S077  
H:\CRD\25S077  
H:\TIE\T6NR3W\26

# U. S. PUBLIC LAND SURVEY MONUMENT RECORD

**INSTRUCTIONS:** This record shall show the location of the corner and shall include all of the following nine elements (a through i).

- (a) Identify the corner by reference to the U.S. public land survey system.  
 ⊕ = Corner monument restored.

South  $\frac{1}{4}$  corner of Section 3,  
 Town 6 North, Range 3 West,  
 Mt. Ida Township, Grant Co.,  
 Wisconsin.



- (b) Describe any record evidence, monument evidence, occupational evidence, testimonial evidence or any other material evidence you considered, and whether the monument was found or placed.

Monument set from ties to a survey by David A. Davis, dated March 14, 1980 and verified by proportionate measurements from an EDM traverse of the area.

- (c) In the plan view drawing below, provide reference ties to at least 4 witness monuments, or, if the location is within a municipality, to at least 2 witness monuments. (Witness monuments shall be made of concrete, natural stone, iron or other equally durable material.) Describe witness monuments.

- (d) Show a plan view drawing depicting the relevant monuments and reference ties which is sufficient in detail to enable accurate relocation of the corner monument if the corner monument is disturbed. Indicate north.

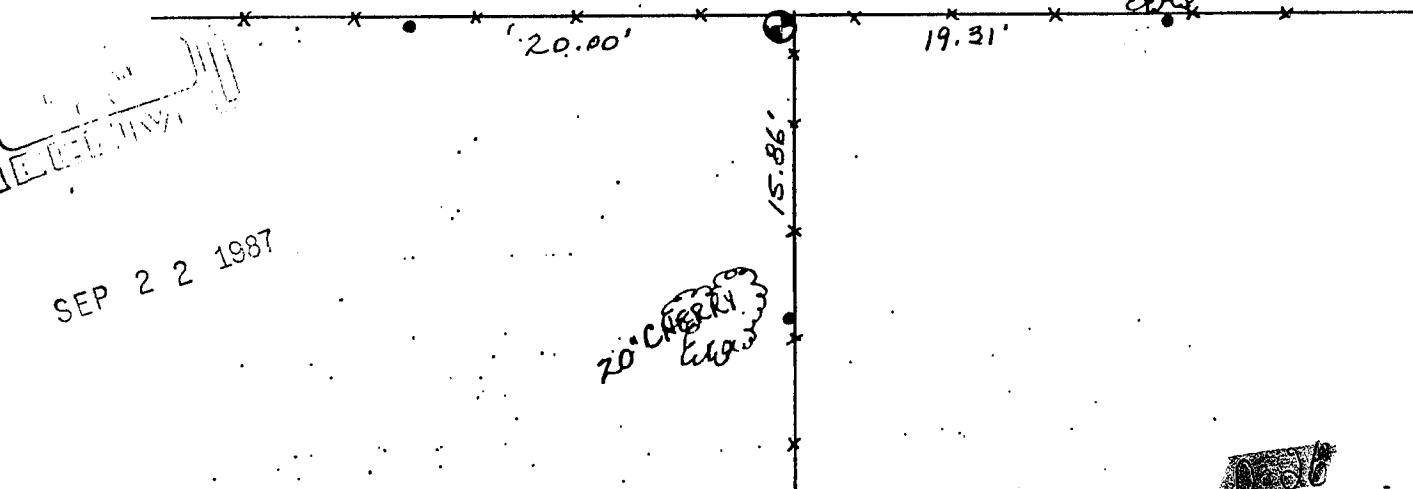
**LEGEND**

- ⊕ Grant Co, Alum. Monument
- 3/8" x 24" round, solid, iron rod
- \*\*\* Fence

*14" White Oak*

*16" CHERRY*

*20" CHERRY*



(e) Describe any material discrepancy between the corner as restored or reestablished and the location of that corner shown on the drawing in (d), by distance and direction. Show the distances between the corner as restored or reestablished and (1) the corner as restored or reestablished monuments shown on the drawing in (d),

and (2) the corner as restored or reestablished monuments shown on the drawing in (d), and (2) to at least 2 of the witness

None

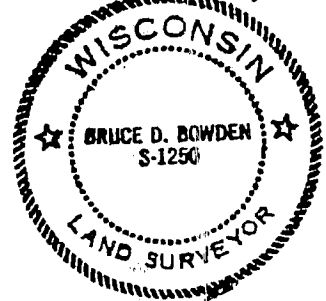
(f) Was the corner restored through acceptance of (1) an obliterated evidence location, or, (2) a found perpetuated location?

(2) a found perpetuated location.

(g&h) Was the corner reestablished through lost corner proportionate methods? If so, show the method, including the directions and distances to other public land survey corners used as evidence or used for proportioning in determining the corner location?

No

Affix Land Surveyor Seal



(i) I, Bruce D. Bowden, R.L.S. - 1250

(type or print name) certify that the corner location shown on this record was determined by me or under my direction and control and that this U.S. Public Land Survey Monument Record is correct and complete to the best of my knowledge and belief.

Bruce D. Bowden  
Signature

July 25, 1987  
Date