

U.S. PUBLIC LAND SURVEY MONUMENT RECORD

Section 12, Town 6 North Range 3 West, Town of Mount Ida, Grant County, Wisconsin

CERTIFICATE

I, Larry L. Austin, do hereby certify that the corner location on this record was determined by me and/or under my direct supervision and that this U.S. public land survey monument record is correct and complete to the best of my knowledge and belief.

Larry L. Austin
 Larry L. Austin, S-1903 date 2-18-11



● = CORNER LOCATION

HISTORY OF CORNER

Corner was originally set in 1832 by Harvey Parke. In 1998 Bruce Bowden set a No. 6 rebar with cap. No other recent record of the corner was found.

CORNER EVIDENCE FOUND

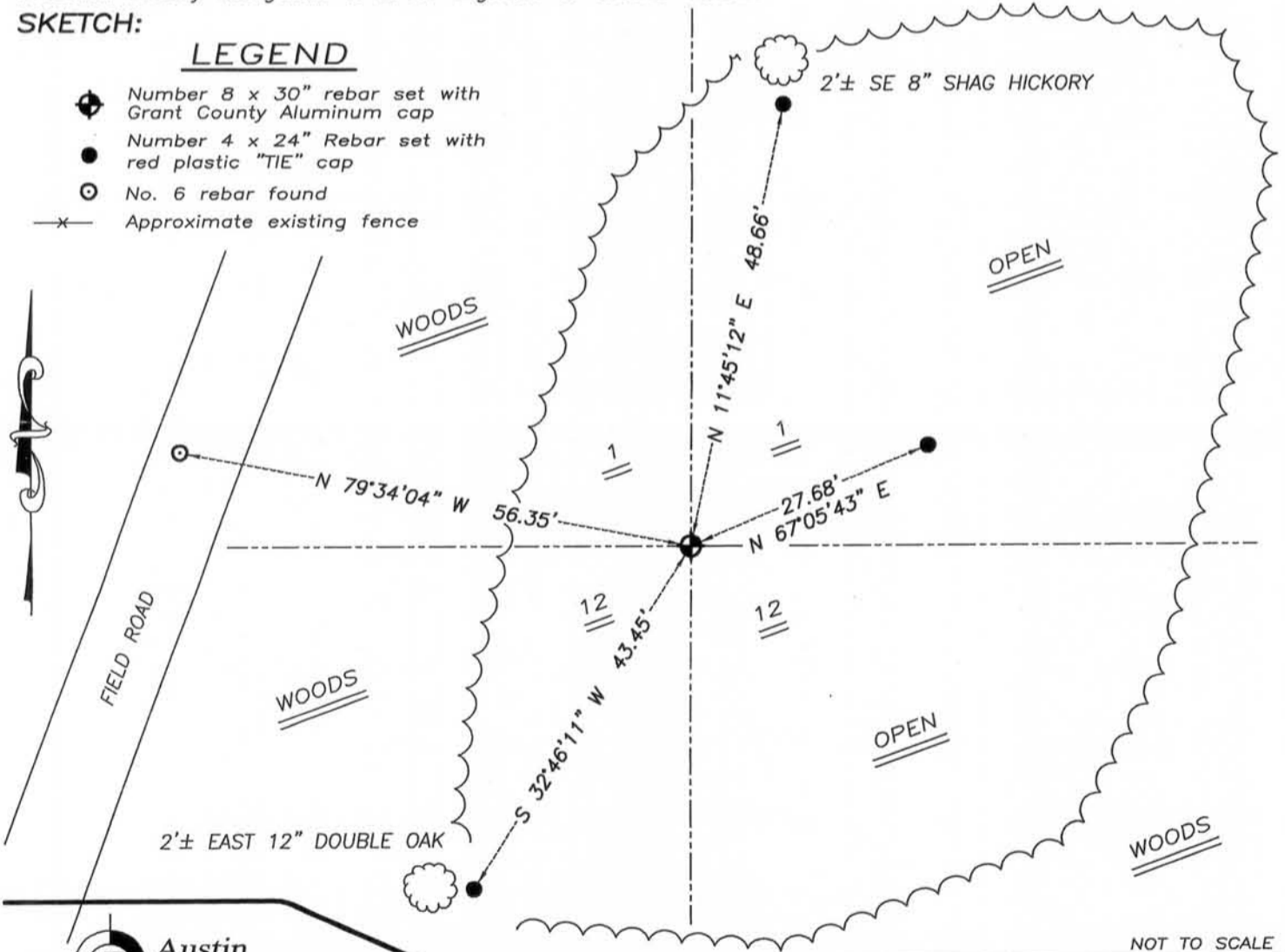
I was unable to locate the No. 6 rebar with cap due to woods clearing. I reset the corner based on the Northeast and Northwest corners of Section 12. Verified this location using EDM & GPS methods.

DESCRIPTION OF CORNER AND WITNESS MONUMENTS, references and accessories used to perpetuate the original or reestablished location of this corner. Witnesses to monument location Bobby Sedgwick & Brad Digman & Shane Austin

SKETCH:

LEGEND

- Number 8 x 30" rebar set with Grant County Aluminum cap
- Number 4 x 24" Rebar set with red plastic "TIE" cap
- No. 6 rebar found
- x- Approximate existing fence



NOT TO SCALE



Austin Engineering LLC
 austinengineeringllc.com

4211 HWY 81 E, LANCASTER, WI 53813
 PHONE: 608-723-6363 FAX: 608-723-6702

JOB NUMBER 10S208-WATERMAN
 FIELDBOOK: TDSR, 10-01
 G:\GRANTDOT\USH61
 H:\TIE\T6NR3W\22

DRAWN BY: SW AUSTIN
 APPROVED: LL AUSTIN

22

FEB 23 2011

Paper weight - 32# 25% Rag Ledger (minimum)

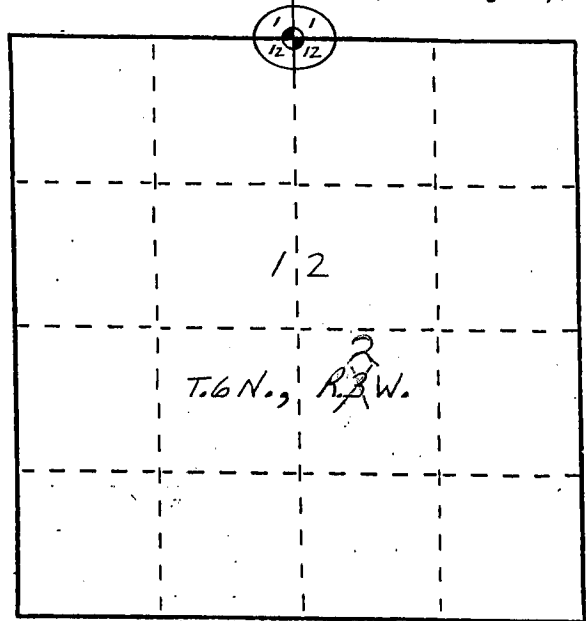
U. S. PUBLIC LAND SURVEY MONUMENT RECORD

INSTRUCTIONS: This record shall show the location of the corner and shall include all of the following nine elements (a through i).

(a) Identify the corner by reference to the U.S. public land survey system.

○ = Corner monument restored.

*The North Quarter Corner of
Section 12, Town 6 North,
Range 3 West, Mt. Ida Township,
Grant County, Wisconsin.*

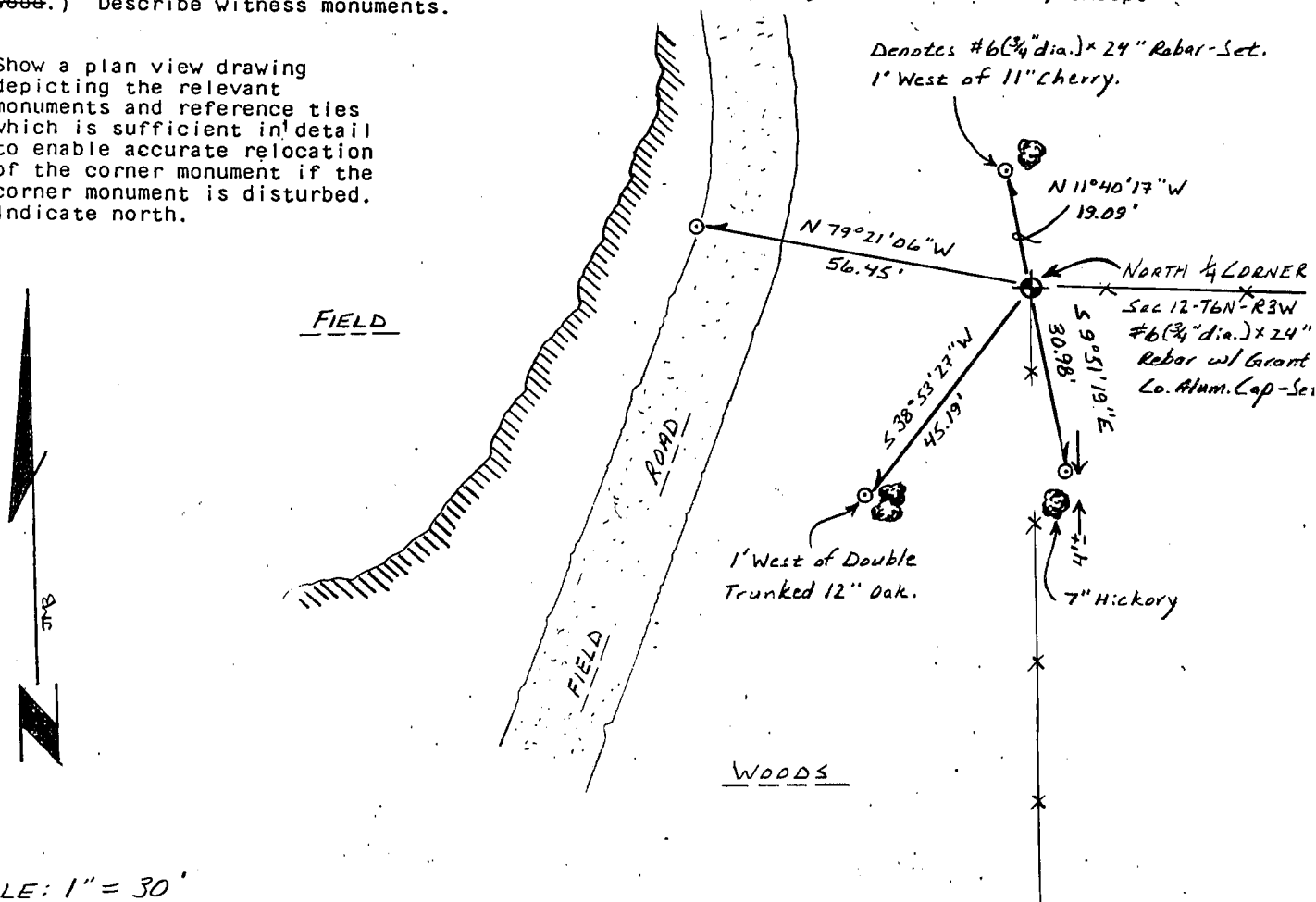


(b) Describe any record evidence, monument evidence, occupational evidence, testimonial evidence or any other material evidence you considered, and whether the monument was found or placed.

Monument set from existing physical evidence of roads and fences after verification by proportionate measurements from a GPS and EDM survey of the area.

(c) In the plan view drawing below, provide reference ties to at least 4 witness monuments, or, if the location is within a municipality, to at least 2 witness monuments. (Witness monuments shall be made of concrete, natural stone, iron or other equally durable material, ~~except wood.~~) Describe witness monuments.

(d) Show a plan view drawing depicting the relevant monuments and reference ties which is sufficient in detail to enable accurate relocation of the corner monument if the corner monument is disturbed. Indicate north.



(e) Describe any material discrepancy between the location of the corner as restored or reestablished and the location of that corner as previously restored or reestablished by distance and direction. Show the discrepancy on the plan view drawing under (d), above. Show the distances between the corner as previously restored or reestablished and (1) the corner as restored or reestablished, and (2) to at least 2 of the witness monuments shown on the drawing in (d), above.

None.

(f) Was the corner restored through acceptance of (1) an obliterated evidence location, or, (2) a found perpetuated location?

A found perpetuated location.

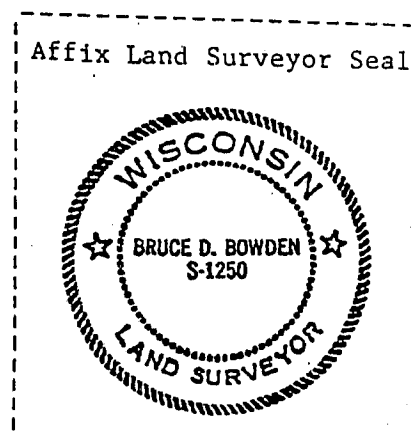
(g&h) Was the corner reestablished through lost corner proportionate methods? If so, show the method, including the directions and distances to other public land survey corners used as evidence or used for proportioning in determining the corner location?

No.

(i) I, BRUCE D. BOWDEN,
(type or print name) certify that the corner location shown on this record was determined by me or under my direction and control and that this U.S. Public Land Survey Monument Record is correct and complete to the best of my knowledge and belief.

Signature

Date



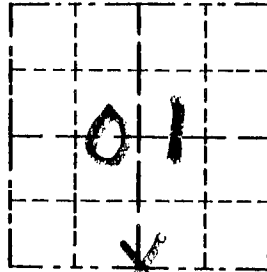
Nov 19, 1998

Survey Monument Record

TYPE OF MONUMENT 3/4" X 24" IRON

CORNER NO. 22
 SECTION 1
 TOWN 6N
 RANGE 3W

FIELD BOOK: 96-14
 PAGE (11)



LOCATION
 (Indicated by "X")

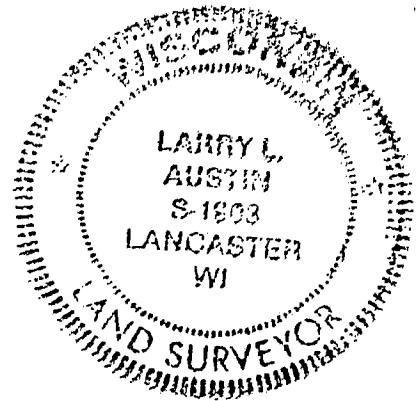
BASIS FOR MONUMENT LOCATION

(Use reverse side if necessary)

Show info such as: History of corner, with reference to Vol. and pg., dates, surveyor; exact description of monument replaced; if location computed, by taped or EDM traverse; landowner, remarks, etc.

SEAL:

CORNER SET IN 1833 BY HARVEY PARKE, NO RECORD FOUND SINCE ORIGINAL SURVEY; I ACCEPTED A OCCUPIED FENCE CORNER, VERIFIED ITS LOCATION USING EDM METHODS.



CERTIFIED CORRECT

Larry L. Austin
 Registered Land Surveyor

DATE: 3/28/97

TIE SKETCH

Show at least three (3) ties and monument

