

# U.S. PUBLIC LAND SURVEY MONUMENT RECORD - GRANT COUNTY, WI

Section 6, Town 3 North Range 1 West, Town of Platteville (a)

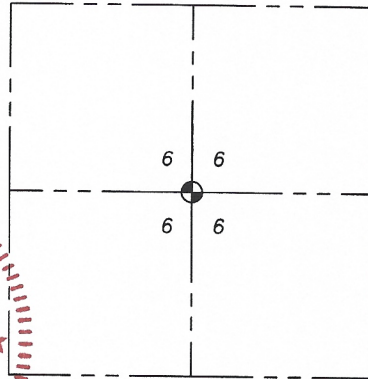
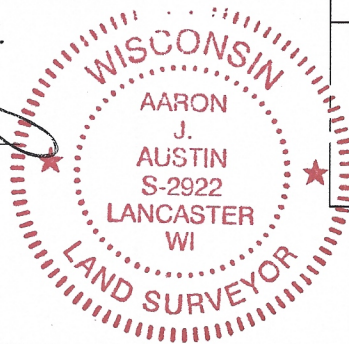
NOTE: This form is intended and designed to fulfill all requirements of the Wisconsin Administrative Code Chapter A-E 7.08, U.S. Public Land Survey Monument Record (3) (a) (b) (c) (d) (e) (f) (g) (h) (i).

CERTIFICATE: (i)

I, Aaron J. Austin, Wisconsin Professional Land Surveyor, do hereby certify that the corner location on this record was determined by me and/or under my direct supervision and that this U.S. Public Land Survey Monument Record is correct and complete to the best of my knowledge and belief.

Dated this 4th day of October, 2017.

  
Aaron J. Austin, S-2922



⊕ = CORNER LOCATION

HISTORY OF CORNER ESTABLISHMENT:

Corner was not set with original government survey. Larry Austin set the corner on a survey dated 6/20/03 and filed in Book 13 Page 5.

DESCRIPTION OF CORNER EVIDENCE FOUND: (b) (f) (g) (h)

Corner was found based on Austin's location on a survey dated 2003. I set four witness monuments after the corner's location was verified with G.P.S. and E.D.M. methods.

DESCRIPTION OF CORNER AND WITNESS MONUMENTS: references and accessories used to perpetuate the original or re-established location of this corner. (c) (d) (e)

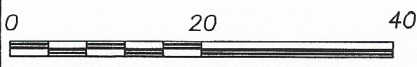
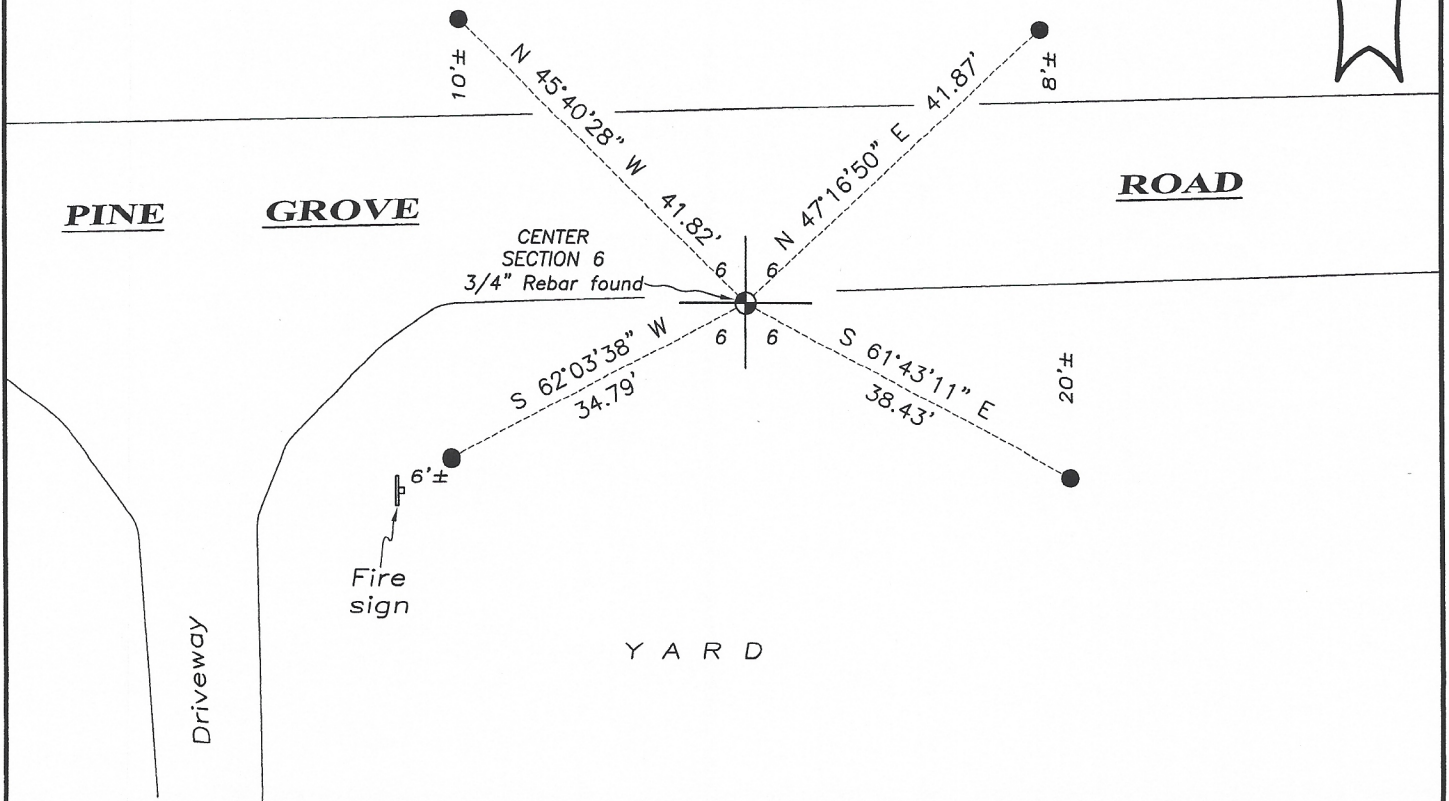
Witnesses to corner location Shane Austin.

SKETCH:

## LEGEND

- ⊕ Section Corner—as designated
- 3/4" x 18" rebar set
- ⌚ Existing sign

W O O D S



SCALE 1" = 20'

# U.S. PUBLIC LAND SURVEY MONUMENT RECORD - GRANT COUNTY, WI

Section 6, Town 6 North Range 3 West, Town of Mount Ida<sup>(a)</sup>

NOTE: This form is intended and designed to fulfill all requirements of the Wisconsin Administrative Code Chapter A-E 7.08, U.S. Public Land Survey Monument Record (3) (a) (b) (c) (d) (e) (f) (g) (h) (i).

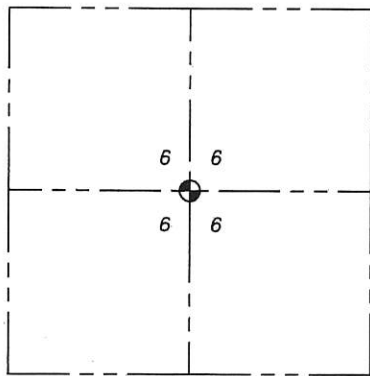
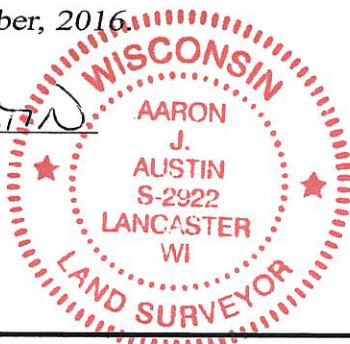
Corner No. 14.5

CERTIFICATE: (i)

I, Aaron J. Austin, Wisconsin Professional Land Surveyor, do hereby certify that the corner location on this record was determined by me and/or under my direct supervision and that this U.S. Public Land Survey Monument Record is correct and complete to the best of my knowledge and belief.

Dated this 12th day of December, 2016.

*Aaron J. Austin*  
 Aaron J. Austin, S-2922



⊕ = CORNER LOCATION

Grant County Coordinates:  
 NAD 83 (2011)  
 Northing: 588,113.76  
 Easting: 801,793.21

HISTORY OF CORNER ESTABLISHMENT:

Corner was not set with original survey.  
 J.C. Scott set the corner on a Survey filed in Book I, Page 70 dated November 2, 1909.  
 Bruce Bowden reset the corner on a survey filed in Book Z, Page 10 dated August 15, 1997.

DESCRIPTION OF CORNER EVIDENCE FOUND: (b) (f) (g) (h)

I found and accepted the rebar as established by Bruce Bowden after I verified it's location. I set 4 witness corners as shown below and established County Coordinates using WISCORS and G.P.S. observations.

DESCRIPTION OF CORNER AND WITNESS MONUMENTS, references and accessories used to perpetuate the original or re-established location of this corner. (c) (d) (e)  
 Witnesses to corner location Shane Austin.

SKETCH:

**LEGEND**

- ⊕ Section Corner—as designated
- 3/4" rebar found
- 3/4" x 18" rebar set with cap
- x-x- Approximate fence

