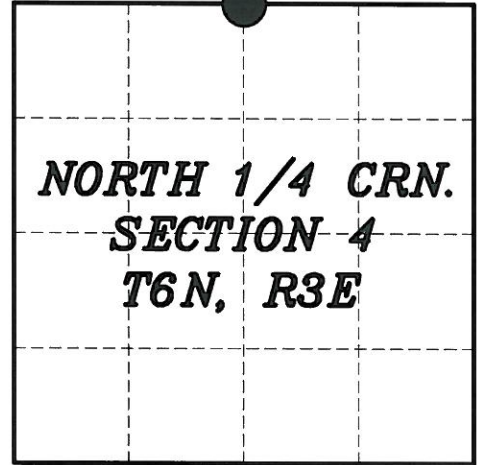


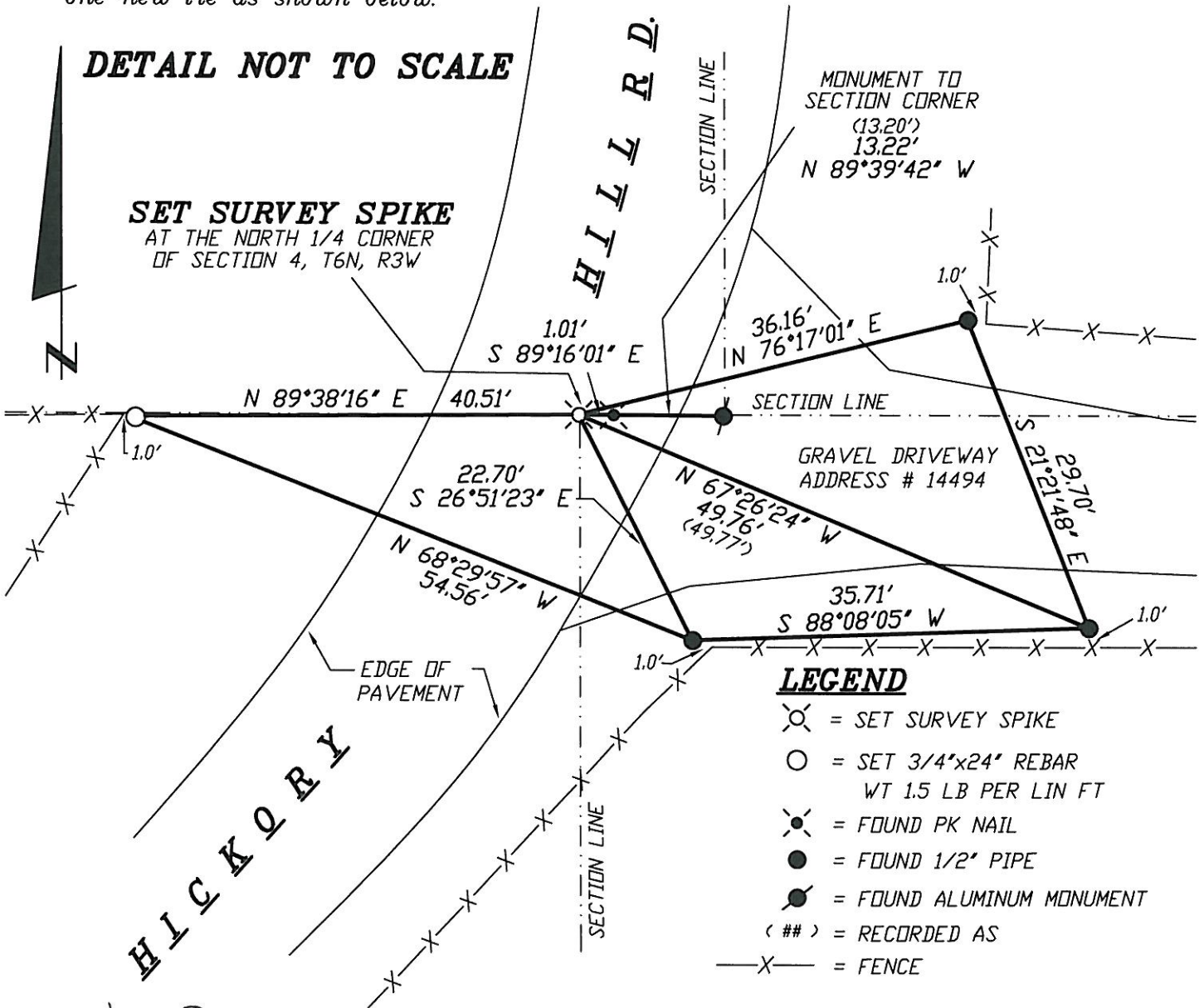
# U. S. PUBLIC LAND SURVEY MONUMENT RECORD

NORTH 1/4 Corner of Section 4  
 Township 6 North, Range 3 East  
 Town of MOUNT IDA  
 GRANT County



**DESCRIPTION OF EVIDENCE:**

Found no evidence of the aluminum cap monument set by Austin Engineering's tie sheet dated 4-10-07. Found 4 of the 5 ties to reestablish the corner and set one new tie as shown below.



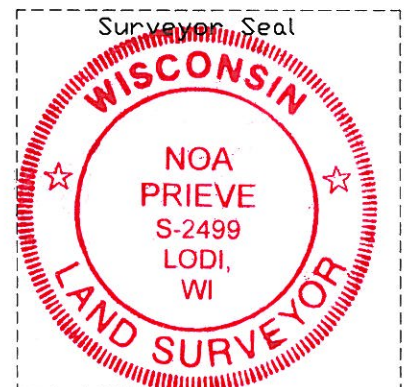
I, NOA PRIEVE, certify that the corner location shown on this record was determined by me or under my direction and control and that this U.S. Public Land Survey Monument Record is correct and complete to the best of my knowledge and belief.

*(Handwritten Signature)*

Signature

FEB. 24, 2014

Date



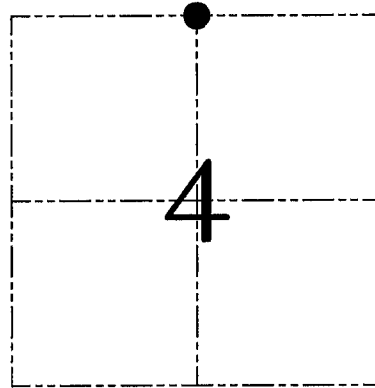
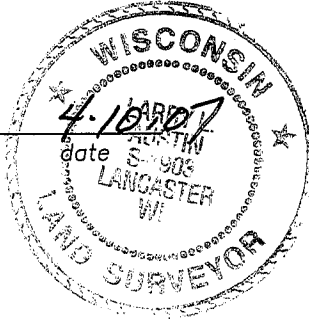
**U.S. PUBLIC LAND SURVEY MONUMENT RECORD – GRANT COUNTY, WI**

**Section 4, Town 6 North Range 3 West, Town of Mount Ida**

CERTIFICATE

I, Larry L. Austin, do hereby certify that the corner location on this record was determined by me and/or under my direct supervision and that this U.S. public land survey monument record is correct and complete to the best of my knowledge and belief.

*Larry L. Austin*  
Larry L. Austin, S-1903



● = CORNER LOCATION

HISTORY OF CORNER ESTABLISHMENT

Corner was never originally set.  
No other record of the corner was found.

DESCRIPTION OF CORNER EVIDENCE FOUND

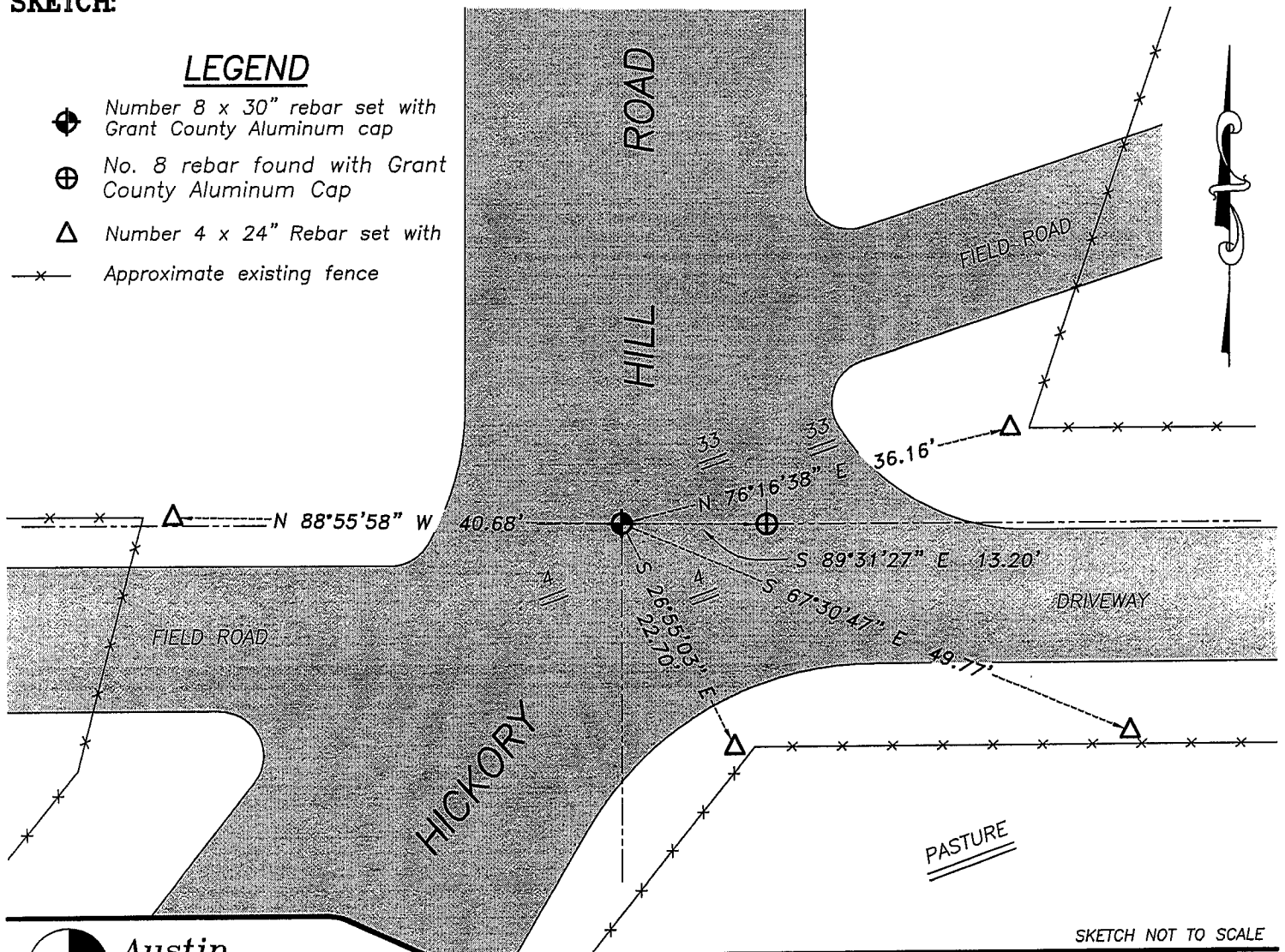
I set the corner at the proportioned offset from the existing South 1/4 of Section 33, T7N R3W. Verified this location using EDM & GPS methods.

DESCRIPTION OF CORNER AND WITNESS MONUMENTS, references and accessories used to perpetuate the original or re-established location of this corner. Witnesses to corner location Bobby Sedgwick & Brad Digman & Shelby Blindert

**SKETCH:**

**LEGEND**

- ⊕ Number 8 x 30" rebar set with Grant County Aluminum cap
- ⊕ No. 8 rebar found with Grant County Aluminum Cap
- △ Number 4 x 24" Rebar set with
- x— Approximate existing fence



SKETCH NOT TO SCALE



**Austin Engineering LLC**

4211 HWY 81 E, LANCASTER, WI 53813  
PHONE 608-723-6363 FAX 608-723-6702

JOB NUMBER 06S305  
FIELDBOOK: TDSR, 2700  
G:\T6NR3W\09  
H:\TIE\T6NR3W\08

DRAWN BY: SW AUSTIN  
APPROVED: LL AUSTIN