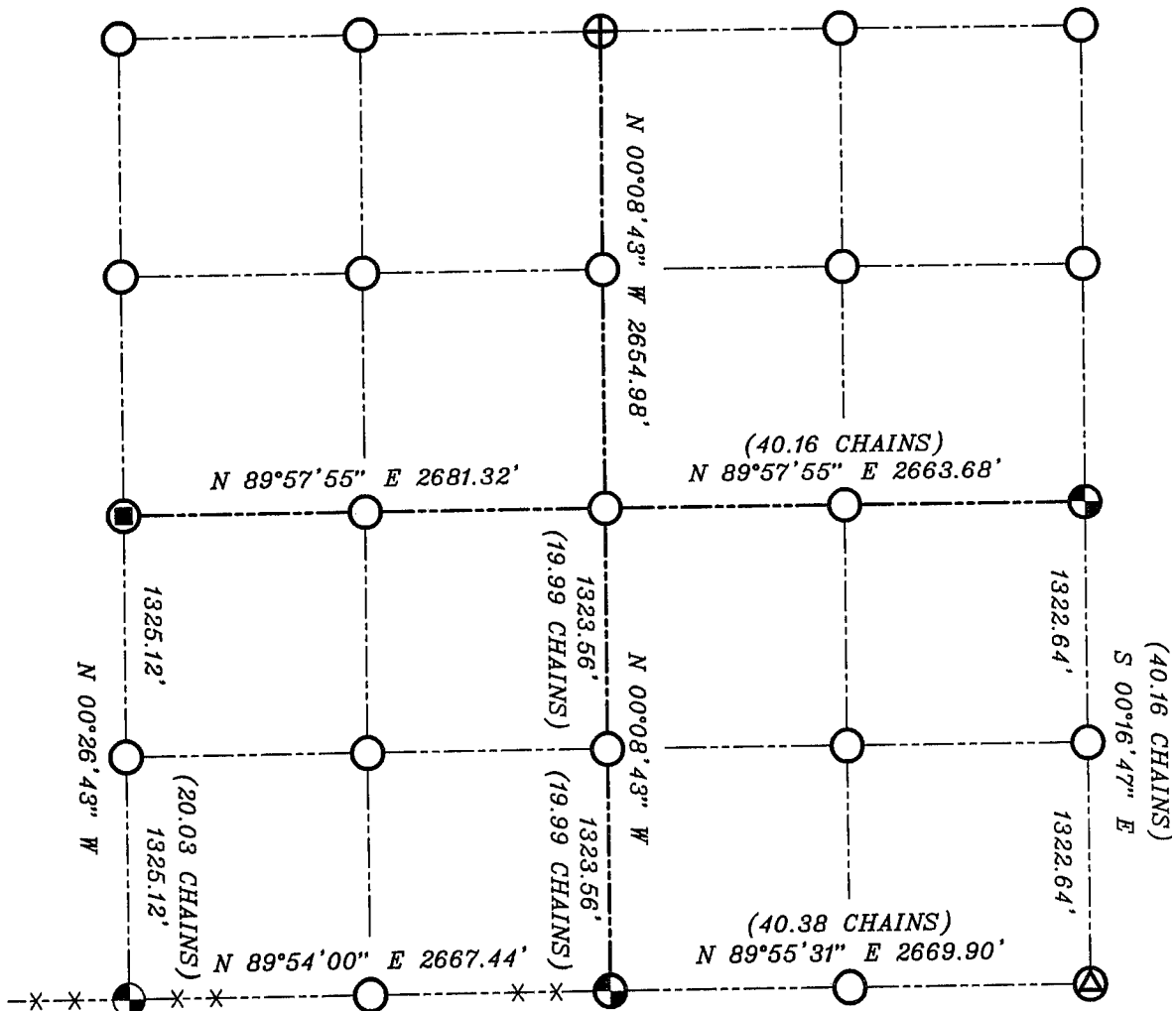


# GRANT COUNTY SECTION SUMMARY

$\frac{29}{\text{SECTION}} - \frac{6N}{\text{TOWN}} - \frac{2W}{\text{RANGE}}$



**NOTE:**

Relationships of all section corners to other section corners shall be shown hereon by bearing and distance or grid coordinates  
Show or describe bearing reference



**LEGEND**

- NO. 8 X 30" REBAR SET WITH GRANT COUNTY ALUMINUM CAP
- NO. 6 REBAR WITH GRANT COUNTY ALUMINUM CAP
- ALUMINUM MONUMENT IN CONCRETE FOUND
- 1" IRON BAR FOUND

BEARINGS REFERENCED TO THE WEST LINE OF THE SOUTHWEST QUARTER OF SECTION 29, WHICH IS ASSUMED TO BEAR N 00°26'43" W.