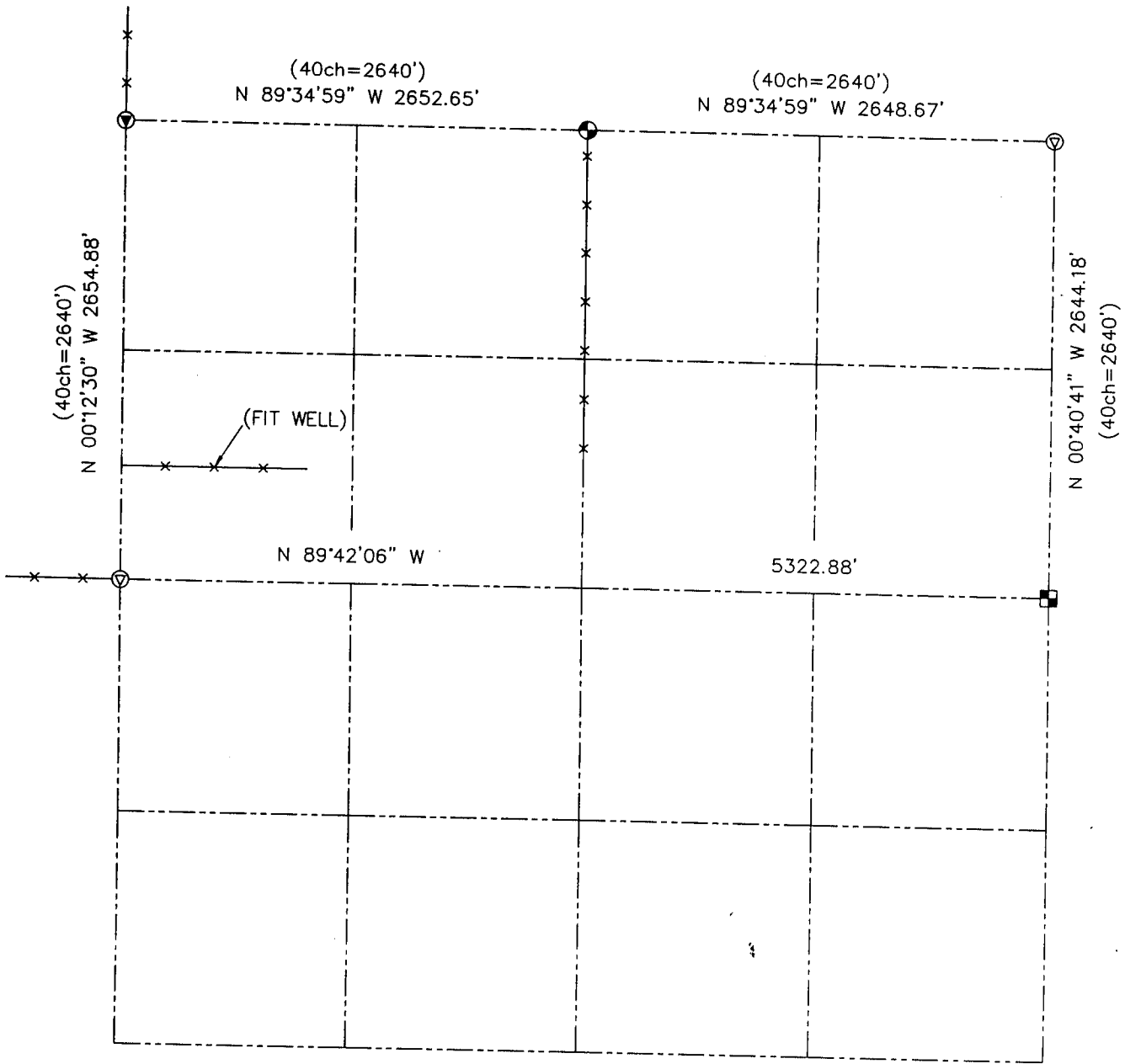


U.S. PUBLIC LAND SURVEY MONUMENT RECORD - GRANT COUNTY, WI
 Summary of Section 27, Town 6 North Range 2 West, Town of Fennimore



LEGEND

- No. 8 x 30" rebar set with Grant County Aluminum Cap - wt=2.67#/l.f.
- Aluminum Monument found
- ⊙ Railroad spike found
- ⊙ Railroad spike set
- () Recorded as
- x— Approximate location of existing fence



Relationship of all section corners to other section corners shall be shown hereon by bearing and distance or grid coordinates. Bearing reference shown below.



Bearings referenced to the East-West Quarter line of Section 27, which is assumed to bear N 89°42'06" W.

SKETCH NOT TO SCALE

AUSTIN ENGINEERING, LLC

4211 HWY 81 EAST, LANCASTER, WI 53813
 PHONE 608-723-6363 FAX 608-723-6702

FIELDBOOK: SDR33, 2112

G: \T6NR2W\23

C: \SWA\TIE\T6NR2W\86

CREW: BS-SB-SA-BD

DRAWN BY: SW AUSTIN

APPROVED: LL AUSTIN