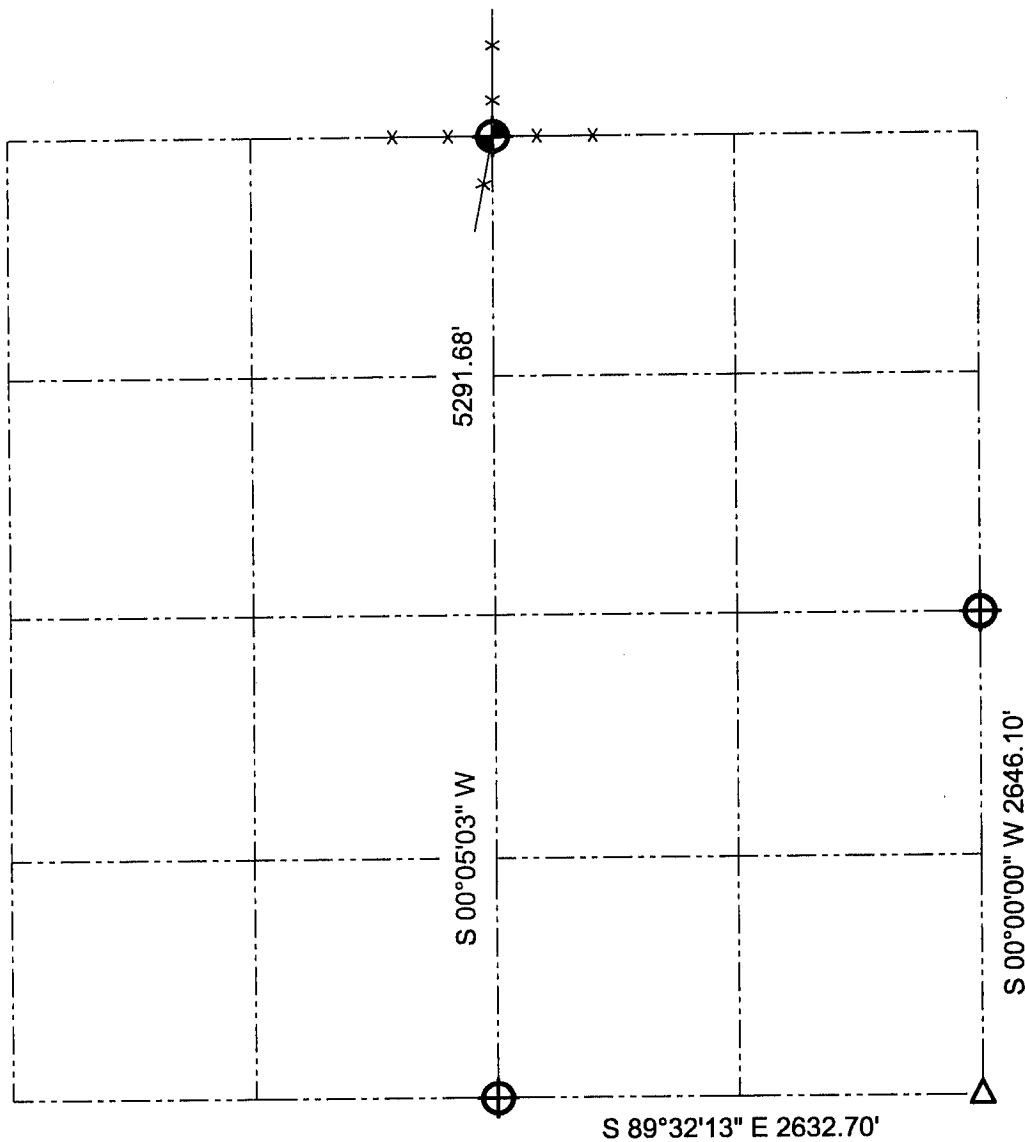





GRANT COUNTY SECTION SUMMARY

$\frac{24}{\text{SECTION}} - \frac{6N}{\text{TOWN}} - \frac{2W}{\text{RANGE}}$



Randy D. Austin
2-2-01

LEGEND

-  Number 8 x 30" rebar set with Grant County Aluminum Cap
-  Grant County Aluminum monument found
-  1" Iron pipe found

NOTE:

Relationships of all section corners to other section corners shall be shown hereon by bearing and distance or grid coordinates.
~Bearing reference below~



Bearings referenced to the East line of the Southeast Quarter of Section 24, which is assumed to bear S 00°00'00" E.

AUSTIN ENGINEERING, LLC
4211 HWY 81 E, LANCASTER, WI 53813
PHONE 608-723-6363 FAX 608-723-6702

FIELDBOOK: SDR33, 2008
G:\T6NR2W\24A
C:\SC14\SWA\TIE\T6NR2W\24SUM

DRAWN BY: SW AUSTIN
APPROVED: LL AUSTIN
CREW: BS - SB - SA - TF