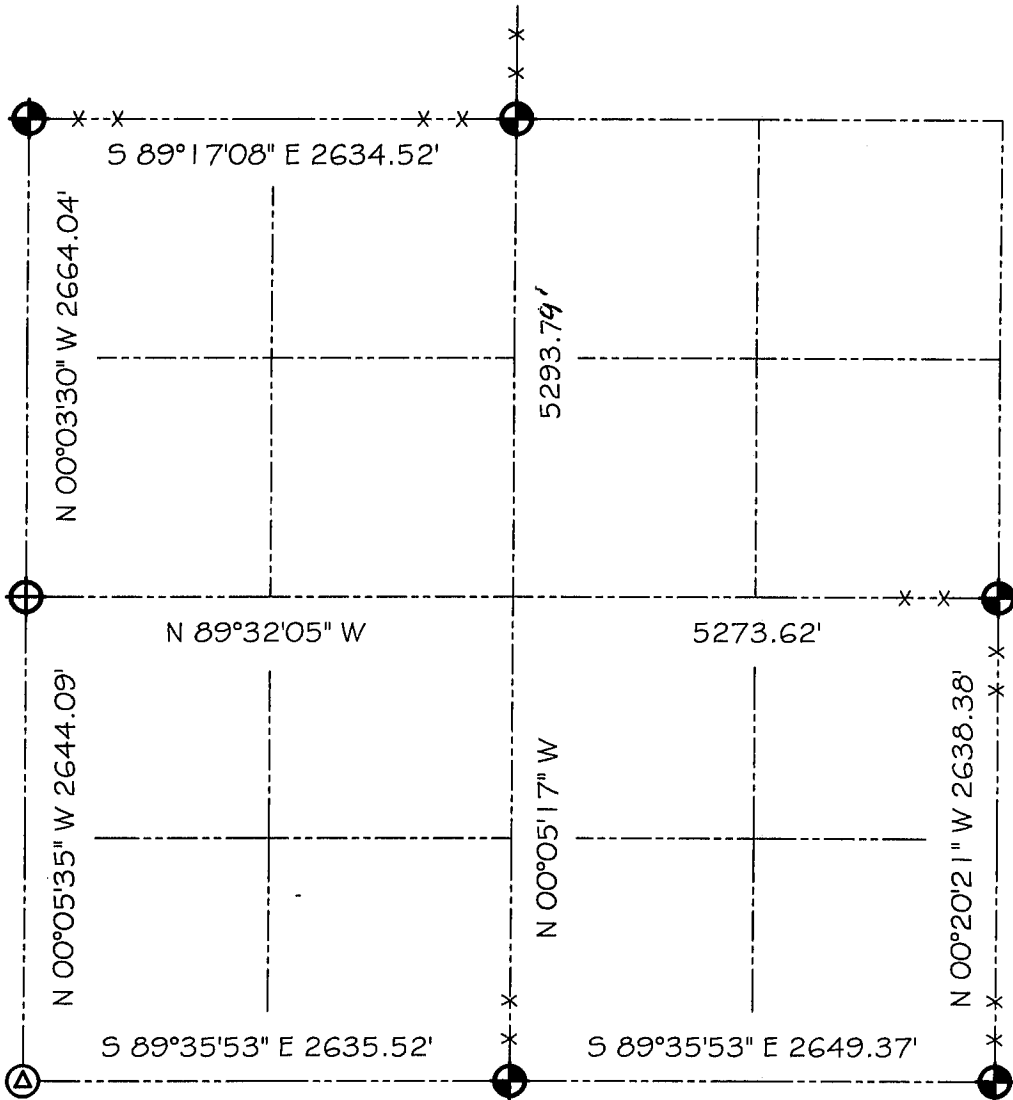





# GRANT COUNTY SECTION SUMMARY

23 - 6N - 2W  
**SECTION TOWN RANGE**

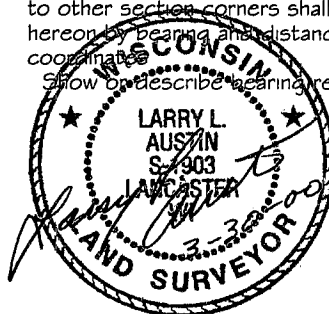


### LEGEND

-  NO. 8 X 30" REBAR SET WITH GRANT COUNTY ALUMINUM CAP
-  ALUMINUM MONUMENT FOUND
-  RAILROAD SPIKE FOUND

### NOTE:

Relationships of all section corners to other section corners shall be shown hereon by bearing and distance or grid coordinates. Show or describe bearing reference.



Bearings referenced to the West line of the Northwest Quarter of Section 23 which is assumed to bear N 00°03'30" W.