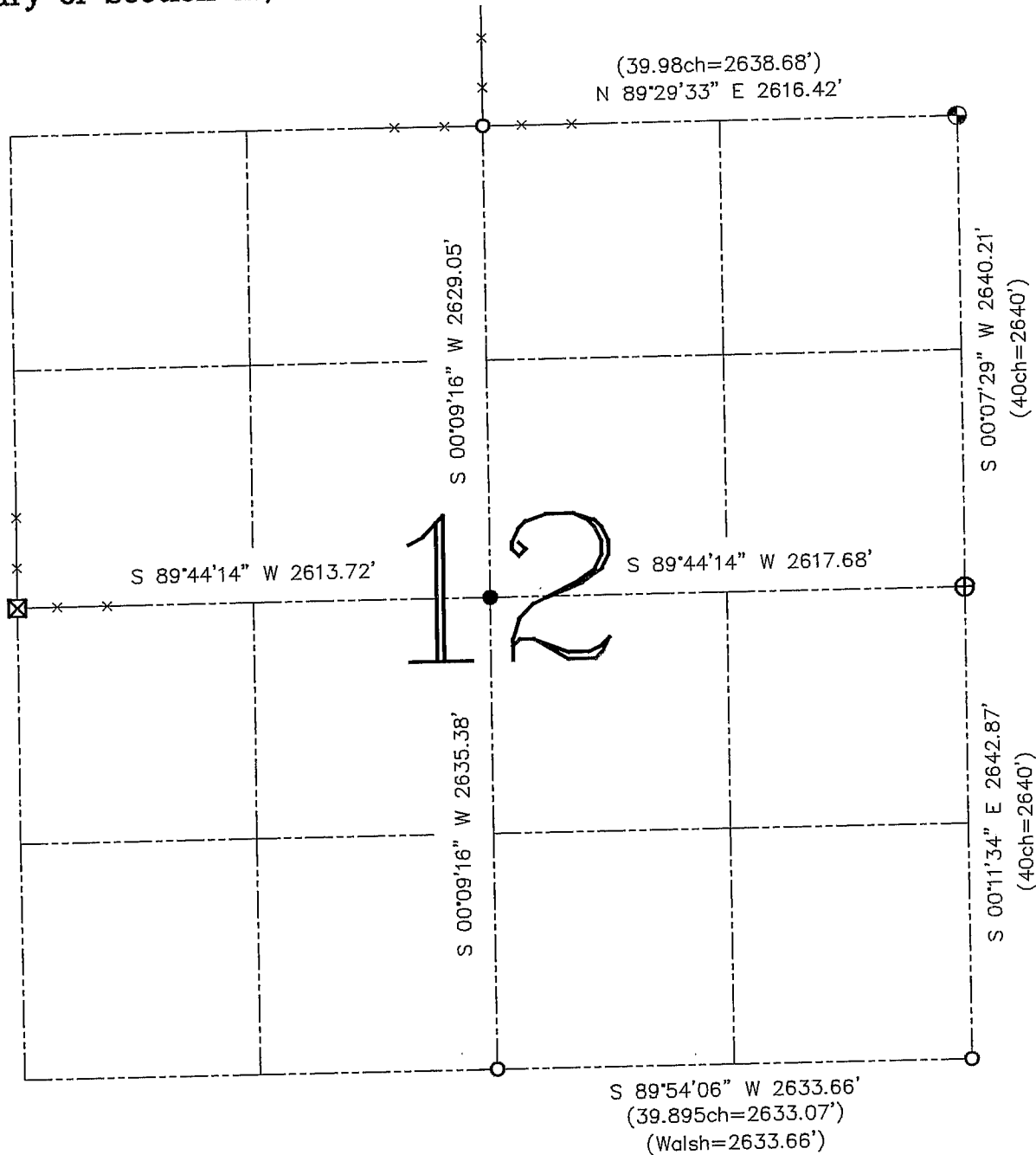


**U.S. PUBLIC LAND SURVEY MONUMENT RECORD – GRANT COUNTY, WI**  
**Summary of Section 12, Town 6 North, Range 2 West, Town of Fennimore**

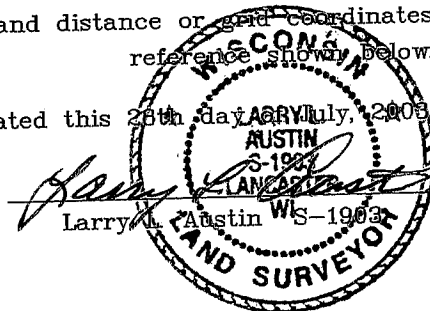


**LEGEND**

- ⊕ No. 8 rebar found with Grant County Aluminum Cap
- ⊙ No. 8 x 30" rebar set with Grant County Aluminum Cap - wt=2.67#/l.f.
- No. 6 rebar found
- ⊠ Stone monument found
- ( ) Recorded as
- x— Approximate location of existing fence
- No. 6 x 24" rebar set with cap - wt=1.50 #/l.f.

Relationship of all section corners to other section corners shall be shown hereon by bearing and distance or grid coordinates. Bearing reference shown below.

Dated this 28th day of July, 2008



Bearings referenced to the East-West Quarter line of this Section, which is assumed to bear as shown hereon.

SKETCH NOT TO SCALE

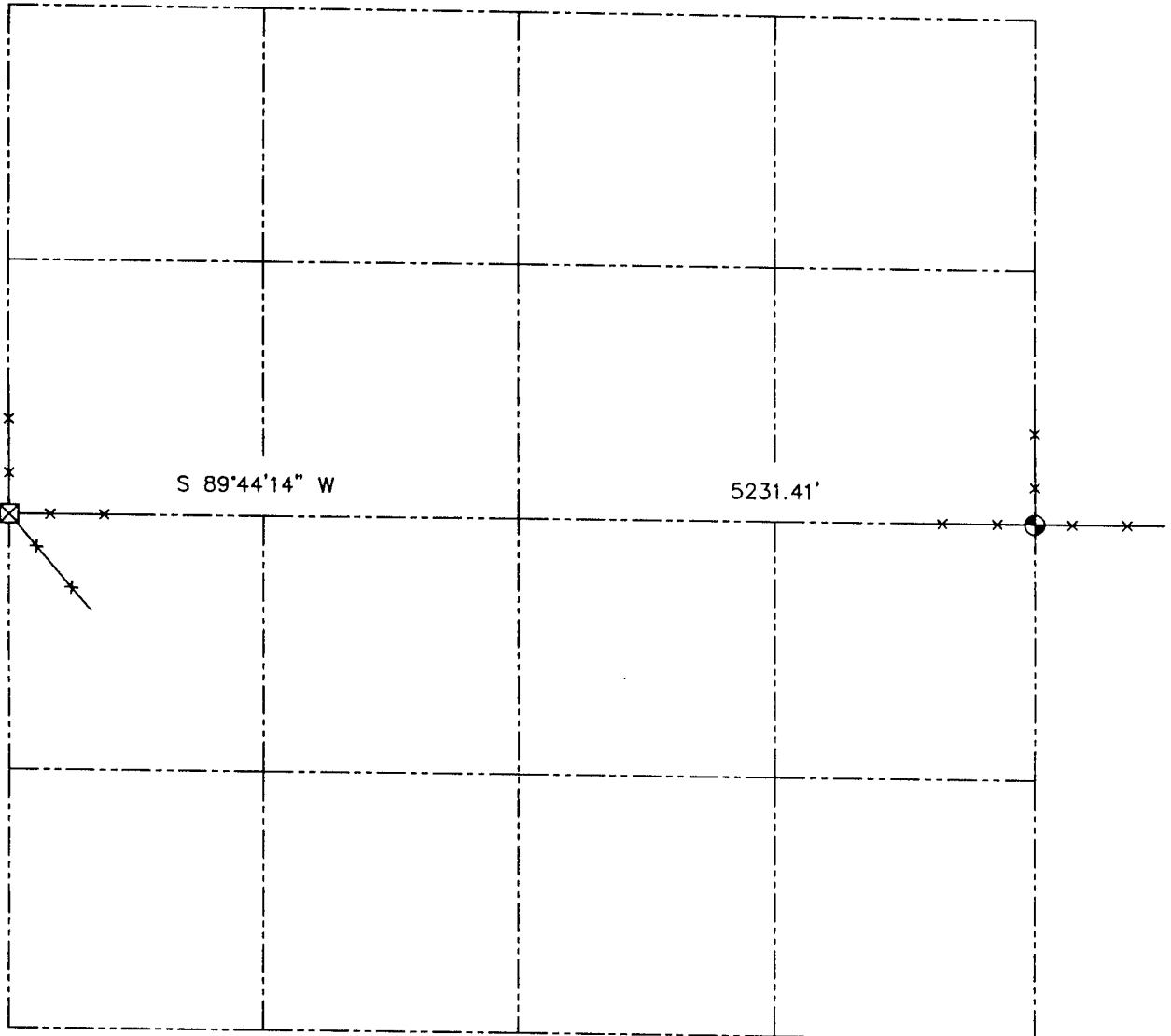
**AUSTIN ENGINEERING, LLC**

4211 HWY 81 EAST, LANCASTER, WI 53813  
 PHONE 608-723-6363 FAX 608-723-6702

FIELDBOOK: TDS RNGR, 2144  
 G:\T7NR2W\35  
 H:\TIE\T6NR2W\21  
 JOB NUMBER 03S080

CREW: BS-SB-SA-BD  
 DRAWN BY: SW AUSTIN  
 APPROVED: LL AUSTIN

**U.S. PUBLIC LAND SURVEY MONUMENT RECORD - GRANT COUNTY, WI**  
 Summary of Section 12, Town 6 North Range 2 West, Town of Fennimore



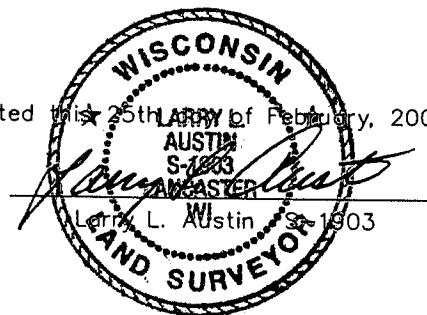
**LEGEND**

- No. 8 x 30' rebar set with Grant County Aluminum Cap - wt=2.67#/l.f.
- ⊠ Stone monument found
- x— Approximate location of existing fence



Relationship of all section corners to other section corners shall be shown hereon by bearing and distance or grid coordinates. Bearing reference shown below.

Dated this 25th day of February, 2002



Bearings referenced to the East-West Quarter line of Section 12, which is assumed to bear S 89°44'14" W.

SKETCH NOT TO SCALE

**AUSTIN ENGINEERING, LLC**  
 4211 HWY 81 EAST, LANCASTER, WI 53813  
 PHONE 608-723-6363 FAX 608-723-6702

FIELDBOOK: 21-44  
 G: \T7NR2W\35  
 C: \CTA\TIES\T6NR2W\12SUM

CREW: BS-SB-SA-BD  
 DRAWN BY: CT AUSTIN  
 APPROVED: LL AUSTIN