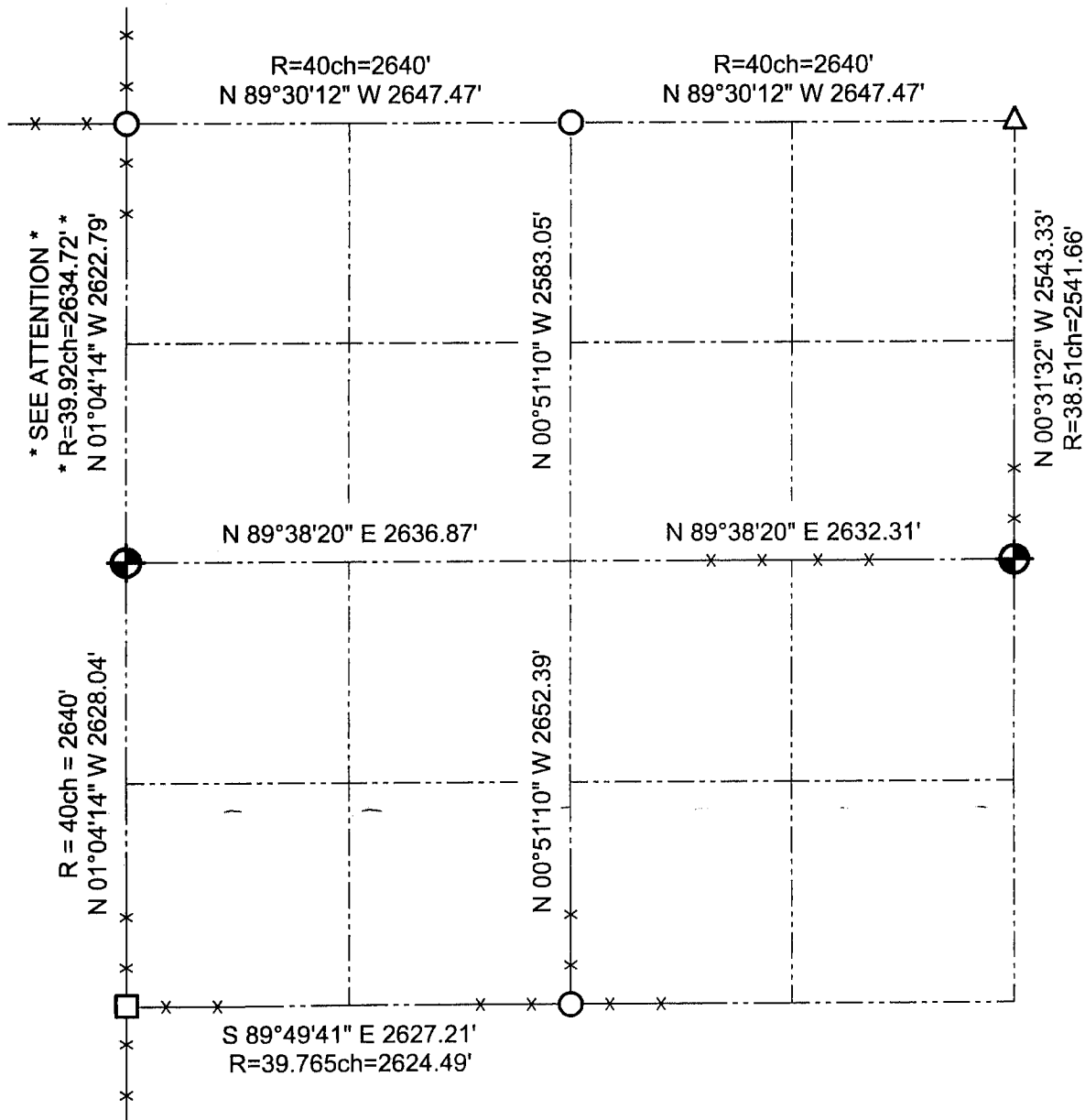


GRANT COUNTY

SECTION SUMMARY

1 - 6N - 2W
SECTION TOWN RANGE



* SEE ATTENTION *

* R=39.92ch=2634.72' *
N 01°04'14" W 2622.79'

R = 40ch = 2640'
N 01°04'14" W 2628.04'

N 00°51'10" W 2583.05'

N 00°51'10" W 2652.39'

N 00°31'32" W 2543.33'
R=38.51ch=2541.66'

ATTENTION

The Grant County Courthouse's hand copied original notes indicate that this line is to be 78.92 Chains. It appears that someone handwrote an eight over the nine. I used 79.92 Chains because it fits the overall length of the West line of Section 1. The plat of T6N R2W shows the closing "40" to be at 18.92 Chains. In my opinion this dimension should be 19.92 Chains.

LEGEND

- Number 8 x 30" rebar set with Grant County Aluminum Cap
- 3/4" Iron bar found
- 1" Square rod found
- 2" x 6" Stone found

NOTE:

Relationships of all section corners to other section corners shall be shown hereon by bearing and distance or grid coordinates.

~Bearing reference below~



Bearings referenced to the North line of Section 1, which is assumed to bear N 89°30'12" W.

AUSTIN ENGINEERING, LLC
 4211 HWY 81 E, LANCASTER, WI 53813
 PHONE 608-723-6363 FAX 608-723-6702

FIELDBOOK: SDR33, 9809
 G:\T7NR2W\35
 C:\SC14\SWA\TIE\T6NR2W\01SUM

DRAWN BY: SW AUSTIN
 APPROVED: LL AUSTIN
 CREW: BS - SB - SA - TF