

U.S. PUBLIC LAND SURVEY MONUMENT RECORD - GRANT COUNTY, WI

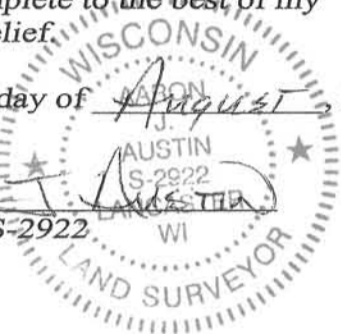
Section 31, Town 6 North Range 2 West, Town of Fennimore

CERTIFICATE:

I, Aaron J. Austin, do hereby certify that the corner location on this record was determined by me and/or under my direct supervision and that this U.S. Public Land Survey Monument Record is correct and complete to the best of my knowledge and belief.

Dated this 15 day of August, 2013.

Aaron J. Austin
 Aaron J. Austin, S-2922



● = CORNER LOCATION

GRANT COUNTY COORDINATES: N=558967.43 E=833724.16

HISTORY OF CORNER ESTABLISHMENT:

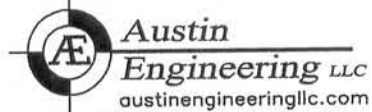
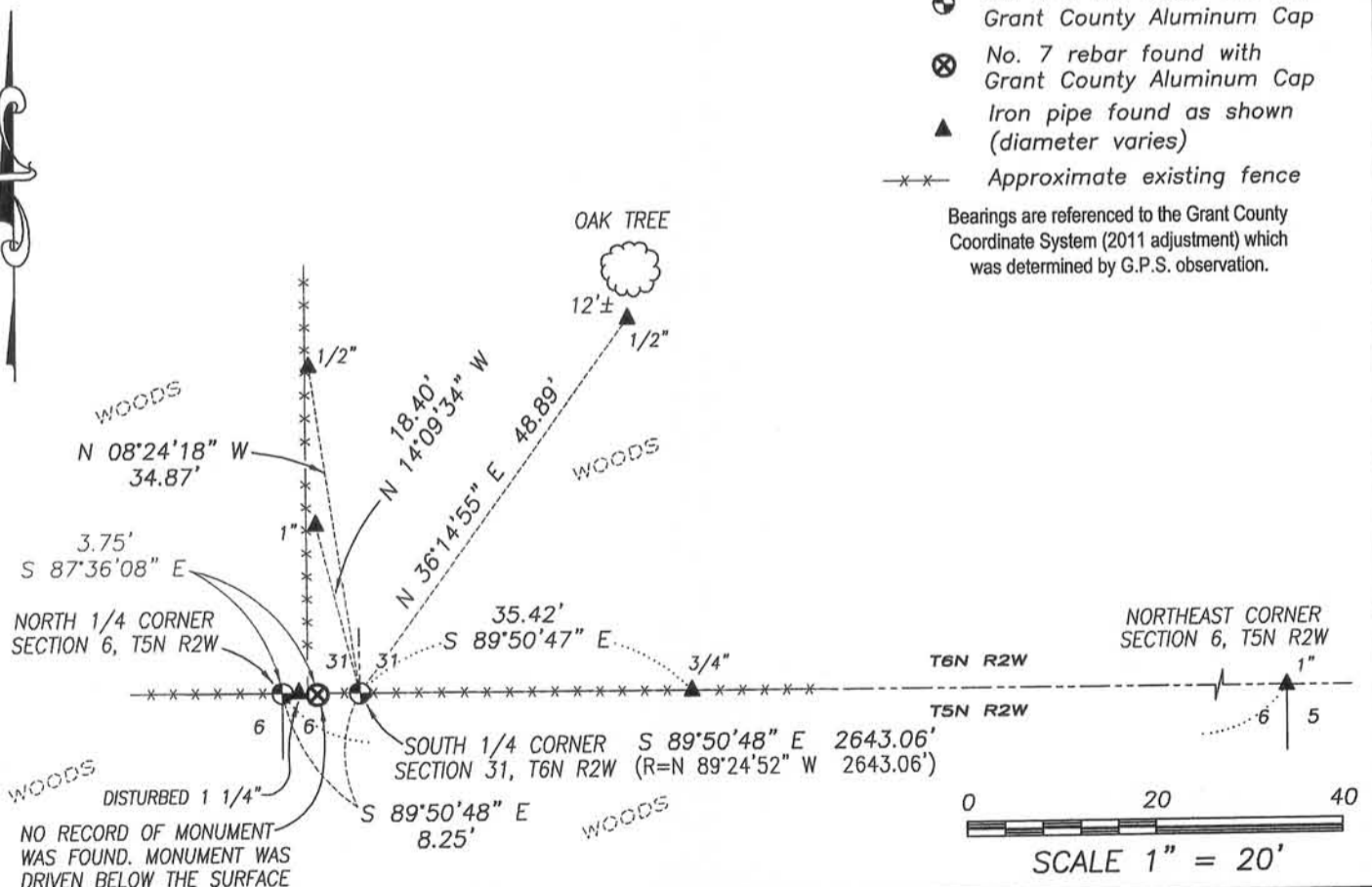
Corner originally set in 1832 by Lucius Lyon. Michael LaRosa showed this corner on a tie sheet dated 8-29-1995. No other record found for this corner.

DESCRIPTION OF CORNER EVIDENCE FOUND:

Michael LaRosa showed this corner on a tie sheet dated 8-29-1995. This corner was not monumented by LaRosa. I set this corner at the prorated offset from the North 1/4 corner of Section 6, T5N, R2W on the North line of said Section 6. It should be noted that I did find a No. 7 rebar with a Grant County Aluminum Cap. I did not accept this corner. No U.S. Public Land Survey Monument record was found and no record of a survey was found showing this monument, therefore, I could not determine which corner this monument intended to mark. I left the monument in place and drove it below the surface. Corner location was verified by E.D.M. and G.P.S methods.

DESCRIPTION OF CORNER AND WITNESS MONUMENTS, references and accessories used to perpetuate the original or re-established location of this corner. Witnesses to corner location Shane Austin

SKETCH:



4211 HWY 81 E, LANCASTER, WI 53813
 PHONE: 608-723-6363 FAX: 608-723-6702

JOB NO: 11S192
 G:\GRANTDOT\HWY61B
 H:\TIE\T6NR2W\132

FIELDBOOK: TDSR
 DRAWN BY: SW AUSTIN
 CREW: SW AUSTIN