

U.S. PUBLIC LAND SURVEY MONUMENT RECORD - GRANT COUNTY, WI

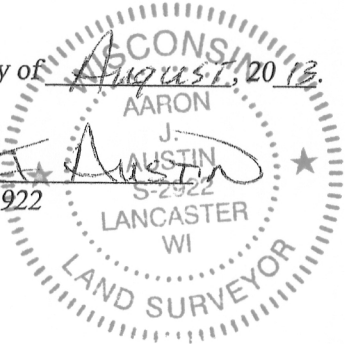
Section 31, Town 6 North Range 2 West, Town of Fennimore

CERTIFICATE:

I, Aaron J. Austin, do hereby certify that the corner location on this record was determined by me and/or under my direct supervision and that this U.S. Public Land Survey Monument Record is correct and complete to the best of my knowledge and belief.

Dated this 15 day of August, 2013.

Aaron J. Austin
 Aaron J. Austin, S-2922



● = CORNER LOCATION

GRANT COUNTY COORDINATES: N=558960.33 E=836375.46

HISTORY OF CORNER ESTABLISHMENT:

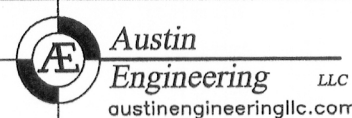
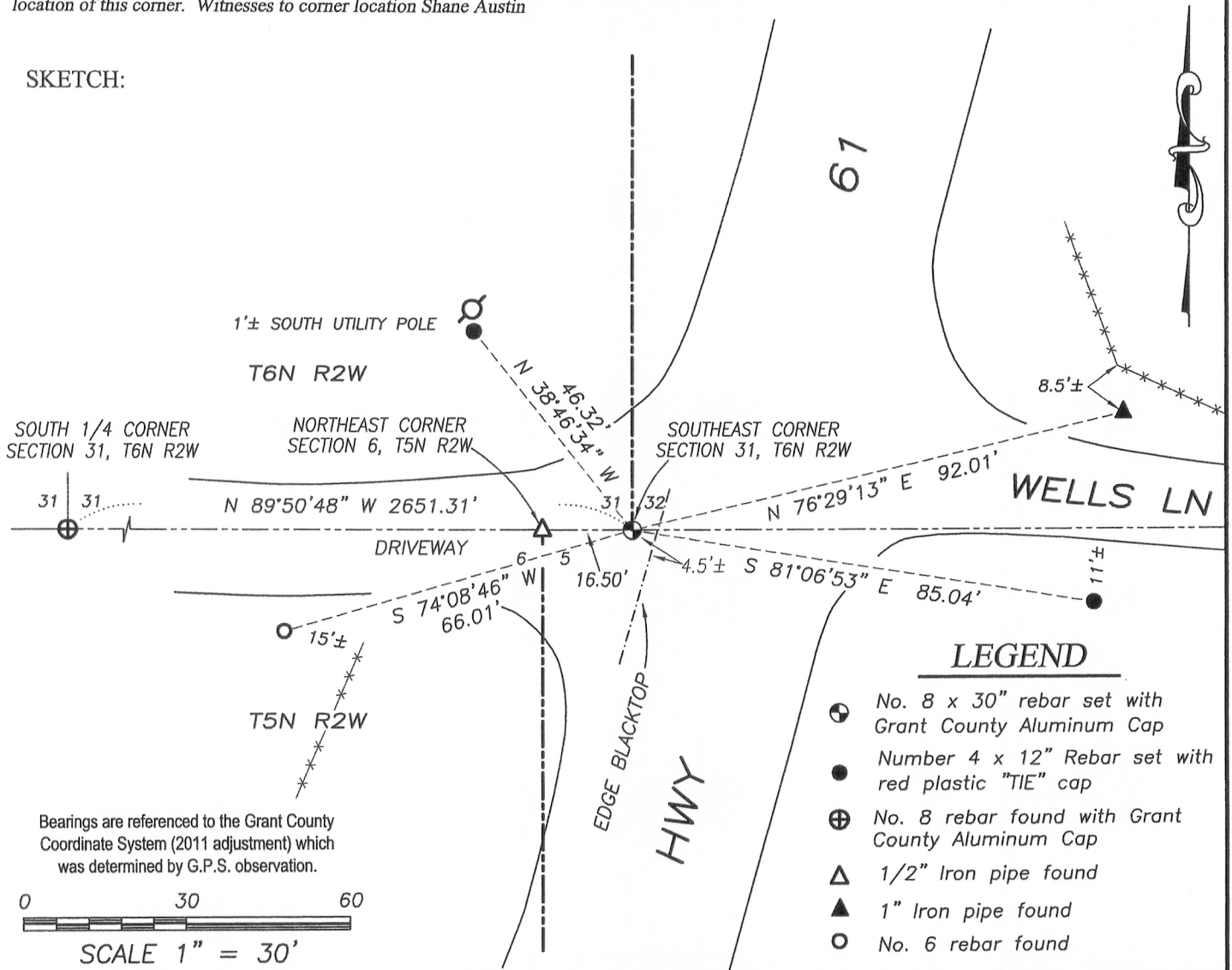
Corner was originally set in 1832 by Lucius Lyon. In 1875 Barber surveyed to the corner filed in Book B, Page 540. Corner was shown on Plat of Right of Way Division Job No. 9577 (No monument stated). No other record was found for this corner.

DESCRIPTION OF CORNER EVIDENCE FOUND:

Corner was set at the recorded offset from the Northeast corner of Section 6, T5N R2W and on a line projected from the South 1/4 corner of Section 31 and the Northeast corner of said Section 6. Corner location was verified by G.P.S. Observation.

DESCRIPTION OF CORNER AND WITNESS MONUMENTS, references and accessories used to perpetuate the original or re-established location of this corner. Witnesses to corner location Shane Austin

SKETCH:



4211 HWY 81 E, LANCASTER, WI 53813
 PHONE: 608-723-6363 FAX: 608-723-6702

JOB NO: 11S192
 G:\GRANTDOT\HWY61B
 H:\TIE\T6NR2W\131

FIELDBOOK: TDSR
 DRAWN BY: SW AUSTIN
 CREW: SW AUSTIN