

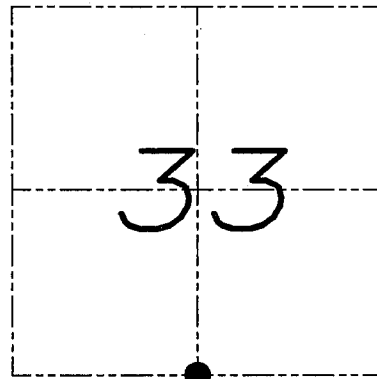
# U.S. PUBLIC LAND SURVEY MONUMENT RECORD

Section 33, Town 6 North Range 2 West, Town of Fennimore, Grant County, Wisconsin

## CERTIFICATE

I, Larry L. Austin, do hereby certify that the corner location on this record was determined by me and/or under my direct supervision and that this U.S. public land survey monument record is correct and complete to the best of my knowledge and belief.

*Larry L. Austin*  
 Larry L. Austin, S. LAND SURVEYOR WI  
 4.10.08 date



● = CORNER LOCATION

## HISTORY OF CORNER

Corner was originally set in 1832 by Sibley.  
 I set and tied the corner in 2002.

## CORNER EVIDENCE FOUND

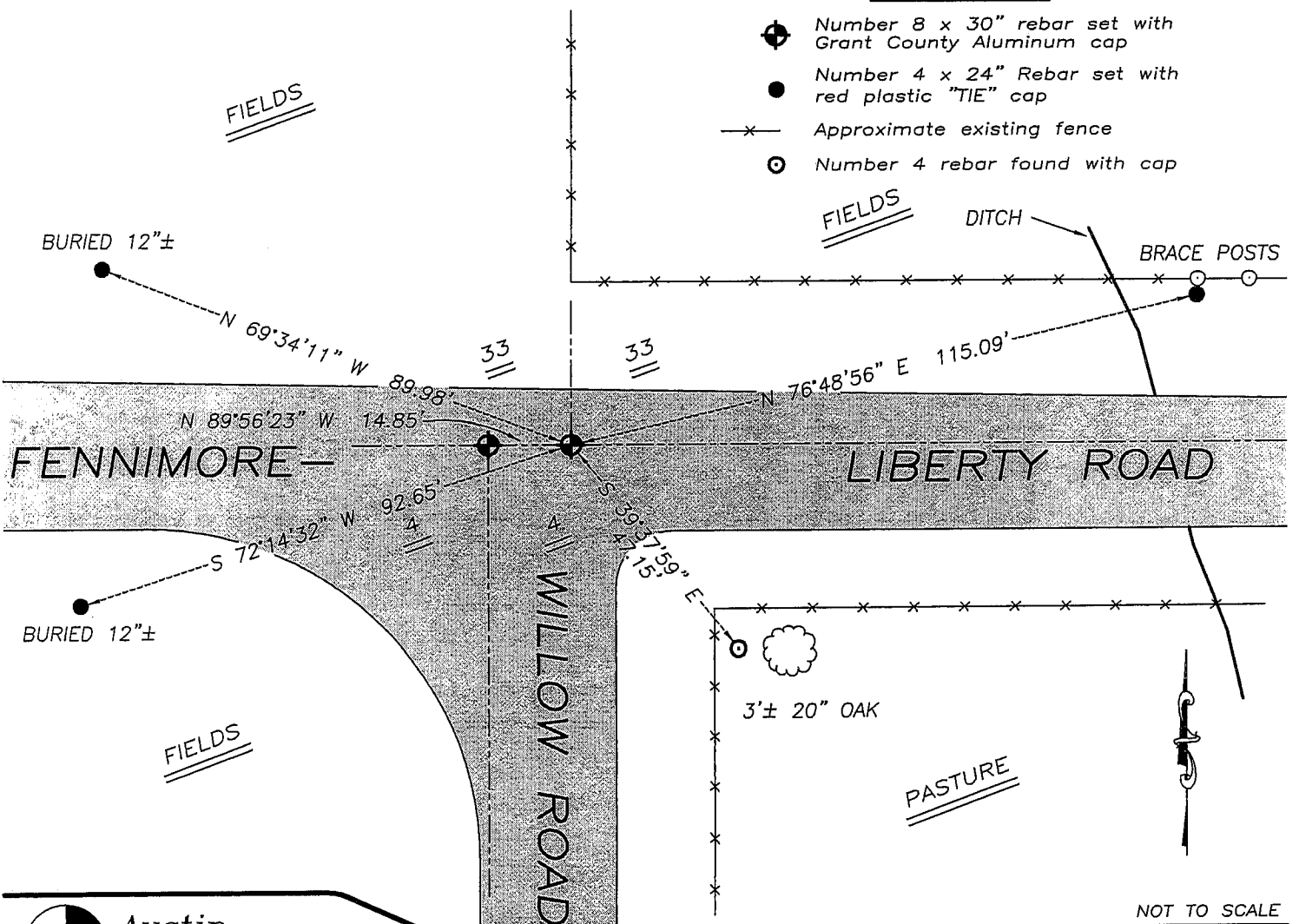
The monument and most of the ties were lost due to road construction. I reset the monument and ties as shown hereon. Verified this location using EDM & GPS methods.

DESCRIPTION OF CORNER AND WITNESS MONUMENTS, references and accessories used to perpetuate the original or re-established location of this corner. Witnesses to monument location Bobby Sedgwick & Brad Digman & Shane Austin

## SKETCH:

## LEGEND

- ⊕ Number 8 x 30" rebar set with Grant County Aluminum cap
- Number 4 x 24" Rebar set with red plastic "TIE" cap
- x- Approximate existing fence
- Number 4 rebar found with cap



NOT TO SCALE



**Austin Engineering LLC**

4211 HWY 81 E, LANCASTER, WI 53813  
 PHONE 608-723-6363 FAX 608-723-6702

JOB NUMBER 07S338  
 FIELDBOOK: TDSR, 2802  
 G:\T6NR2W\29  
 H:\TIE\T6NR2W\128

DRAWN BY: SW AUSTIN  
 APPROVED: LL AUSTIN

128

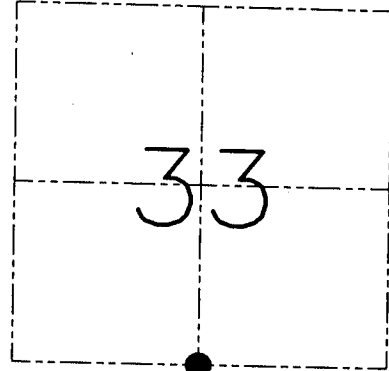
**U.S. PUBLIC LAND SURVEY MONUMENT RECORD - GRANT COUNTY, WI**  
 Section 33, Town 6 North Range 2 West, Town of Fennimore

**CERTIFICATE**

I, Larry L. Austin, do hereby certify that the corner location on this record was determined by me and/or under my direct supervision and that this U.S. public land survey monument record is correct and complete to the best of my knowledge and belief.

Dated this 26th day of February, 2002

*Larry L. Austin*  
 Larry L. Austin S-1903



● = CORNER LOCATION

**HISTORY OF CORNER ESTABLISHMENT**

Corner was originally set in 1832 by Sibley.  
 No other record of the corner was found.

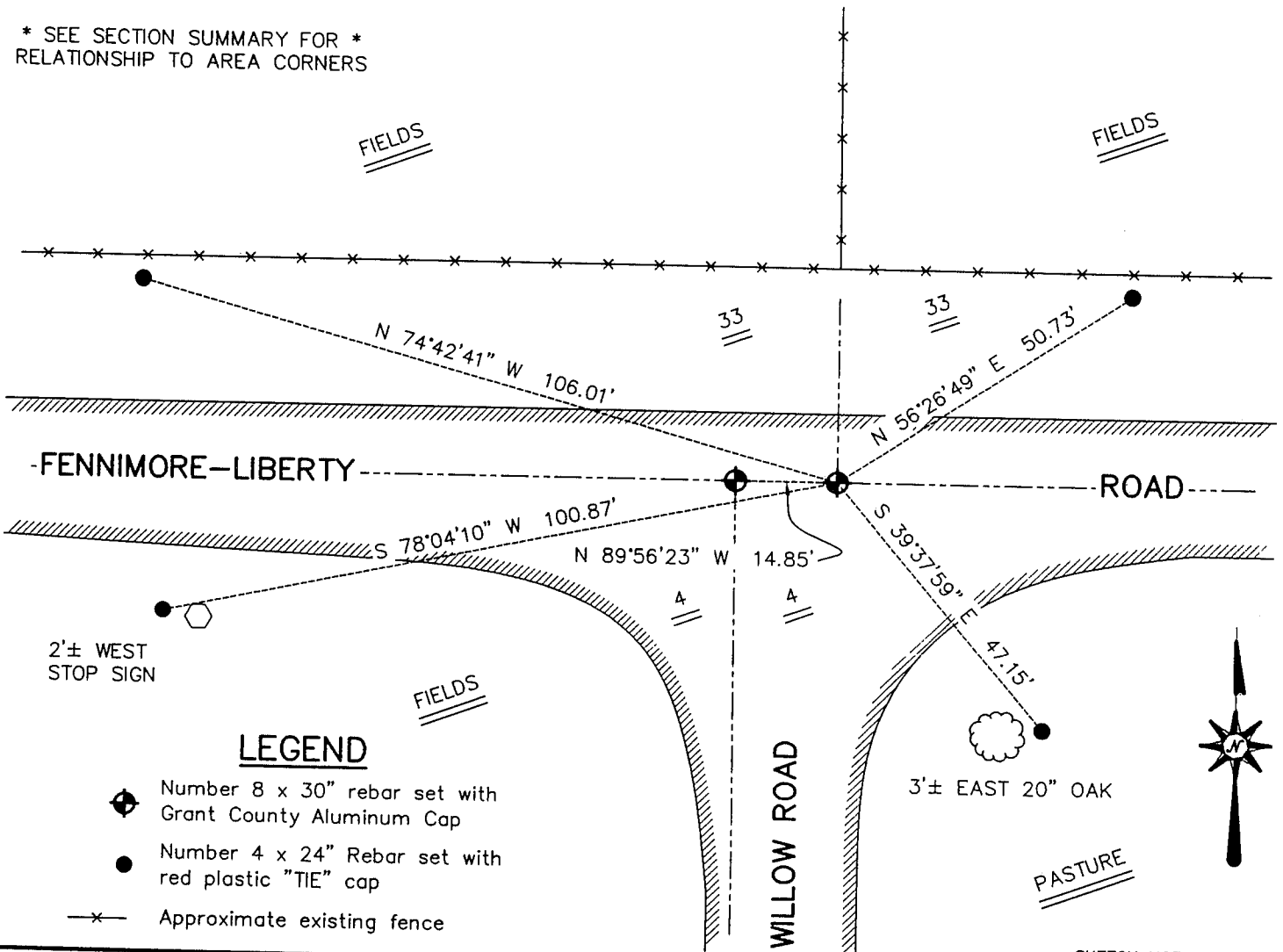
**DESCRIPTION OF CORNER EVIDENCE FOUND**

I reset the corner based on an occupied location - centerline road East-West and fence North. This location fit area corners. Verified this location using EDM & GPS methods.

**DESCRIPTION OF CORNER AND WITNESS MONUMENTS**, references and accessories used to perpetuate the original or re-established location of this corner. Witnesses to the corner location Bobby Sedgwick & Shelby Blindert & Brad Digman

**SKETCH:**

\* SEE SECTION SUMMARY FOR \*  
 RELATIONSHIP TO AREA CORNERS



**LEGEND**

- Number 8 x 30" rebar set with Grant County Aluminum Cap
- Number 4 x 24" Rebar set with red plastic "TIE" cap
- x— Approximate existing fence

SKETCH NOT TO SCALE

**AUSTIN ENGINEERING, LLC**

4211 HWY B1 EAST, LANCASTER, WI 53813  
 PHONE 608-723-6363 FAX 608-723-6702

FIELDBOOK: SDR33, 2207  
 G: \T5NR2W\09  
 C: \SWA\TIE\T6NR2W\128  
 CREW: BS-SB-SA-BD

DRAWN BY: SW AUSTIN  
 APPROVED: LL AUSTIN

**CORNER NUMBER 128**