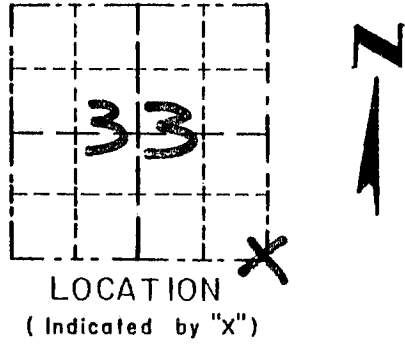


Survey Monument Record

CORNER NO. 127  
 SECTION 33  
 TOWN 6N  
 RANGE 2W

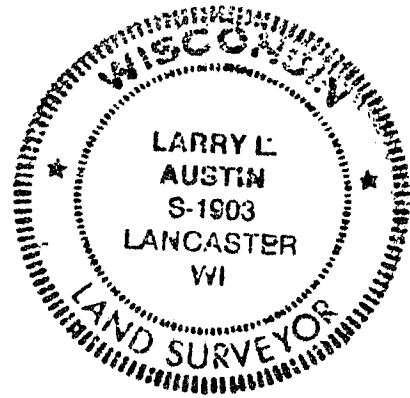
TYPE OF MONUMENT GRANT COUNTY Alum. Mon. SET  
 STATE PLANE COORDINATES: N \_\_\_\_\_  
 E \_\_\_\_\_  
 ELEVATION — M.S.L. DATUM: \_\_\_\_\_  
 THETA ANGLE: \_\_\_\_\_  
 FIELD BOOK: \_\_\_\_\_  
 PAGE \_\_\_\_\_



BASIS FOR MONUMENT LOCATION

(Use reverse side if necessary)

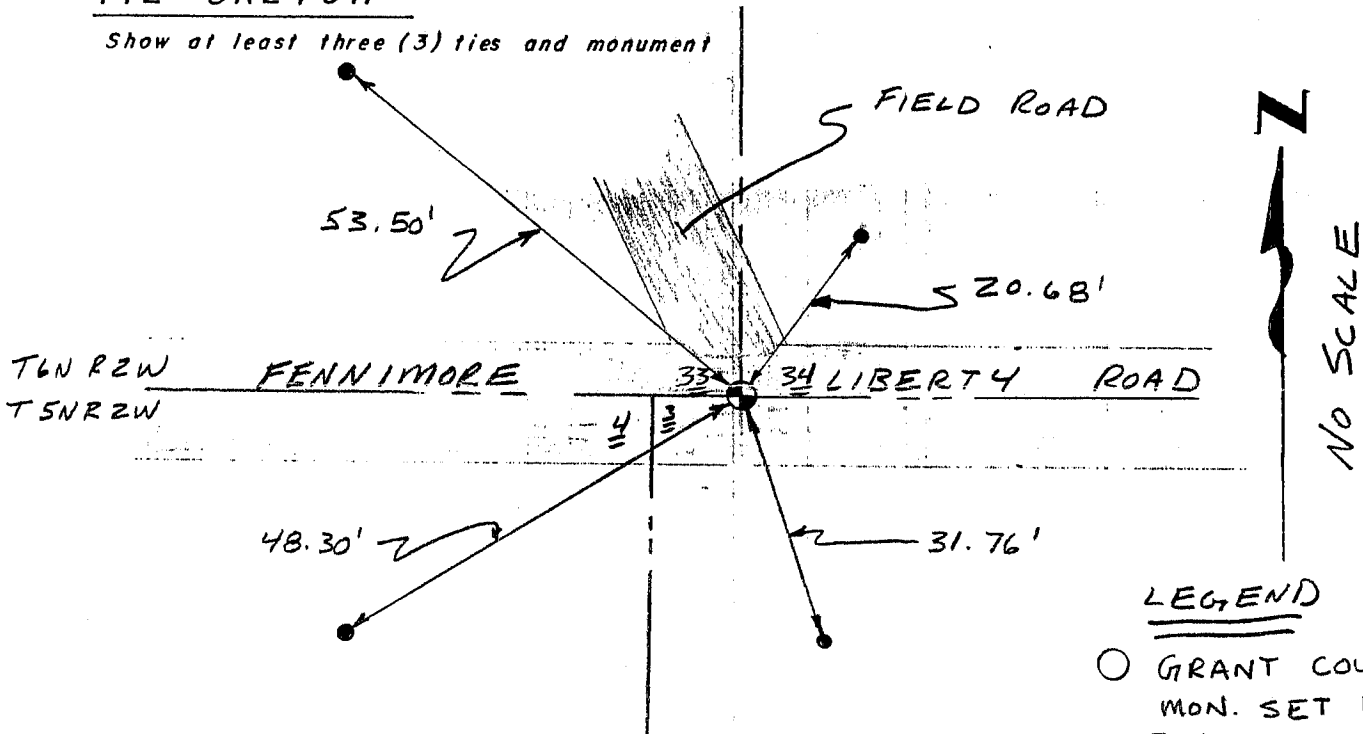
- ORIGINAL CORNER SET IN 1832 BY SIBLEY
- NORTH/SOUTH LOCATION ESTABLISHED SEAL BY EXISTING PHYSICAL EVIDENCE E E/W; EAST/WEST LOCATION ESTABLISHED BY PROPORTIONATE MEASUREMENT 1/2 MILE WEST AND 1 MILE EAST VERIFIED THIS LOCATION BY EDM TRAVERSE OF THE AREA.



CERTIFIED CORRECT  
*Larry L. Austin*  
 Registered Land Surveyor  
 DATE: 10/21/96

TIE SKETCH

Show at least three (3) ties and monument



LEGEND

- GRANT COUNTY Alum. MON. SET BELOW SURF.
- 3/8" x 12" SPIKES SET AS TIES