

62120

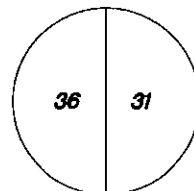
U.S. PUBLIC LAND SURVEY MONUMENT RECORD

Wisconsin Department of Transportation

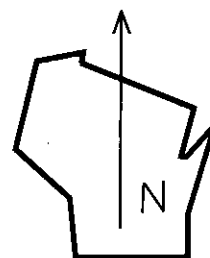
DT1291 2/2006

County Name Grant		Name of <input checked="" type="checkbox"/> Township, <input type="checkbox"/> City, <input type="checkbox"/> Village Fennimore	
Surveyor Name Michael T. Schinke			
Address, City, State, ZIP Code 7501 College Blvd Suite 101 Overland Park, KS 66210			
Y (Northing) 347389.784	X (Easting) 1822199.444	Latitude	Longitude
Project ID 0020543.00		Coordinate ID	

T. 6 N. - R. 2 W
4th Principal Meridian
Corner 120

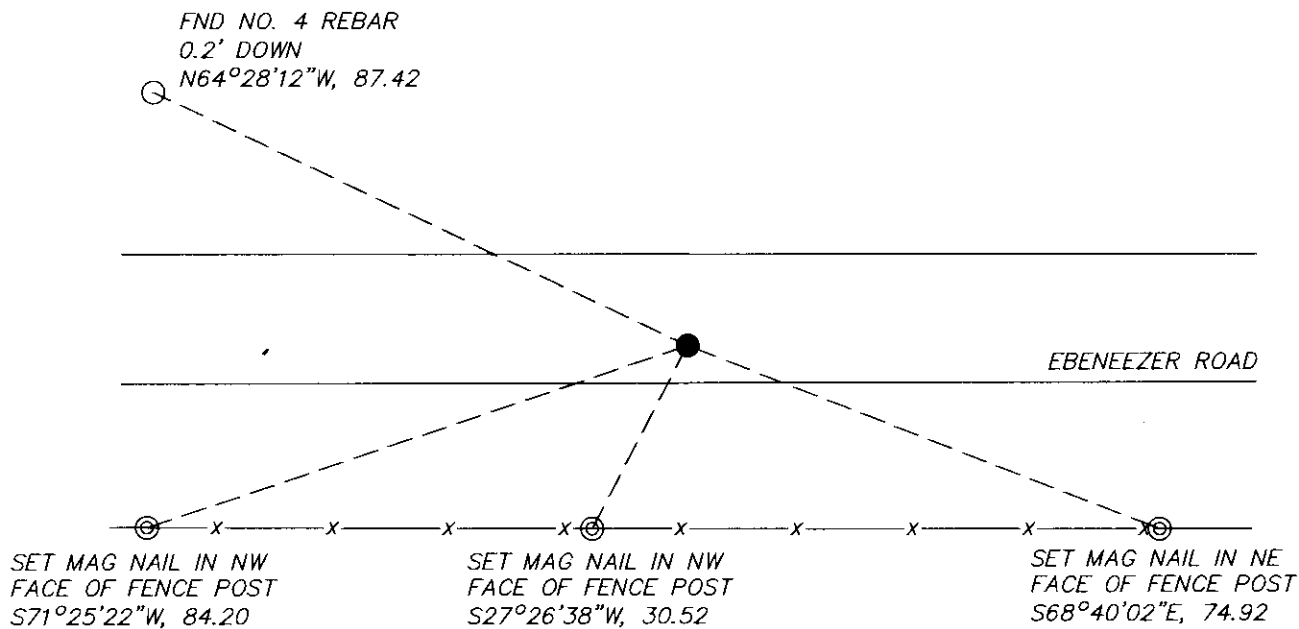


- | | | |
|---|---|--|
| HORIZONTAL DATUM UNITS | | COORDINATE SYSTEM |
| <input type="checkbox"/> NAD 27 | <input checked="" type="checkbox"/> English | <input type="checkbox"/> Geodetic |
| <input type="checkbox"/> NAD 83 (1991) | <input type="checkbox"/> Metric | <input checked="" type="checkbox"/> State Plane South Zone |
| <input type="checkbox"/> NAD 83 (1997) | | <input type="checkbox"/> County |
| <input checked="" type="checkbox"/> Other - NAD 83 (2011) | | |



Location Diagram, showing corner identification name, bearing and distance references to at least four witness monuments, fence or occupational lines, centerlines of roads, and other site details for reference. Also, show the bearings and distances between the witness monuments.

East Quarter Corner Section 36, Township 6 North, Range 2 West, Grant County, Wisconsin



Indicate *fd.* = found or *pl.* = placed in the diagram below
Bearings used in the location sketch and basis for monument location are assumed, unless as noted.
Monumentation Legend / Description of Corner and Witness Monuments.

- ⊙ SET MAG NAIL
- FND NO. 4 REBAR
- FND NO. 8 REBAR, 0.1' DOWN

If applicable, show any discrepancy between the location of the corner as restored or re-established and the location of that corner as previously restored or re-established by bearing and distance. Also, show the bearings and distances between the previous corner and at least two of the witness monuments.

Basis for Monument Location

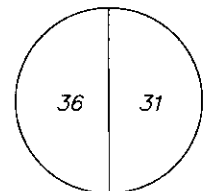
1. Describe any record evidence, monument evidence, occupational evidence or any other material evidence including traverse measurements that you considered, and whether the monument was found or placed. Explain below, be specific, and attach a separate sheet if necessary.

2. Was the corner.
 - a. found perpetuate
 - b. restored through acceptance of obliterated evidence.
 - c. relocated by witness testimony, or
 - d. accepted as a re-monumented corner of record and maintained with additional monumentation?

3. Was the corner re-established through lost corner proportionate methods? If so, show the method, including the directions and distances to other public land survey corners used as evidence or used in determining the corner location.

1. Westwood Professional Services searched the area and found a 1" rebar which fits the distances shown on the Bowden surveys. Accepting as the corner position and set 3 additional ties.
2. D
3. NO

T. 6 N. R. 2 W.
4 th Principal Meridian
Corner 120



Certification

I, Michael T. Schinke, certify that the corner location shown on the record was determined by me or under my direction and control and that the U.S. Public Land Survey Monument Record is correct and complete to the best of my knowledge and belief, in accordance with Chapter A-E 7.08 of the Wisconsin Administration Code.

Section Control Data Sheets have been filed in the County Surveyor's office, showing final measurements by direction and distance between all remonumented corners. Section Control information is referenced by the following.

Date	Project ID	Sheet(s)
	0020543.00	2 of 2



x *Michael T Schinke*

04/23/2020

(Registered Land Surveyor Signature and Number)

Date

62120

U.S. PUBLIC LAND SURVEY MONUMENT RECORD - GRANT COUNTY, WI

Section 36, Town 6 North Range 2 West, Town of Fennimore (a)

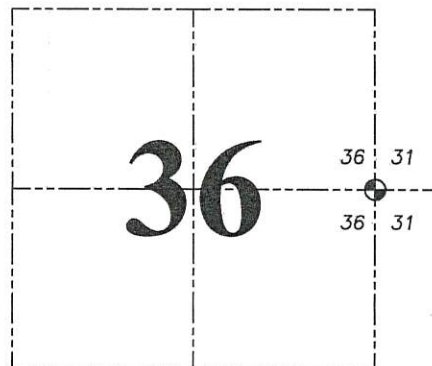
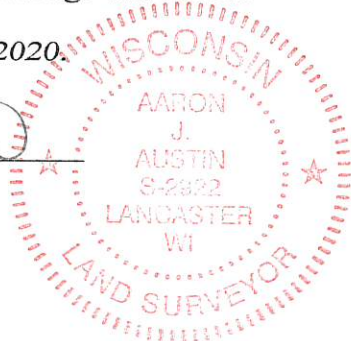
NOTE: This form is intended and designed to fulfill all requirements of the Wisconsin Administrative Code Chapter A-E 7.08, U.S. Public Land Survey Monument Record (3) (a) (b) (c) (d) (e) (f) (g) (h) (i).

CERTIFICATE: (i)

I, Aaron J. Austin, Wisconsin Professional Land Surveyor, do hereby certify that the corner location on this record was determined by me and/or under my direct supervision and that this U.S. Public Land Survey Monument Record is correct and complete to the best of my knowledge and belief.

Dated this 8th day of January, 2020.

Aaron J. Austin
Aaron J. Austin, S-2922



⊕ = CORNER LOCATION

Grant County Coordinates:
NAD 83 (2011)
Northing: 561,594.70
Easting: 862,880.20

HISTORY OF CORNER ESTABLISHMENT:

Original corner was set in 1832 by Sibley.
Bruce Bowden set a 1" rebar and prepared a Survey Monument Record dated 5/9/1989.

DESCRIPTION OF CORNER EVIDENCE FOUND: (b) (f) (g) (h)

I found the 1" rebar that Bowden set. I set four new witness corners after I verified the Monument's location with G.P.S. and E.D.M. methods.

DESCRIPTION OF CORNER AND WITNESS MONUMENTS. references and accessories used to perpetuate the original or re-established location of this corner. (c) (d) (e)

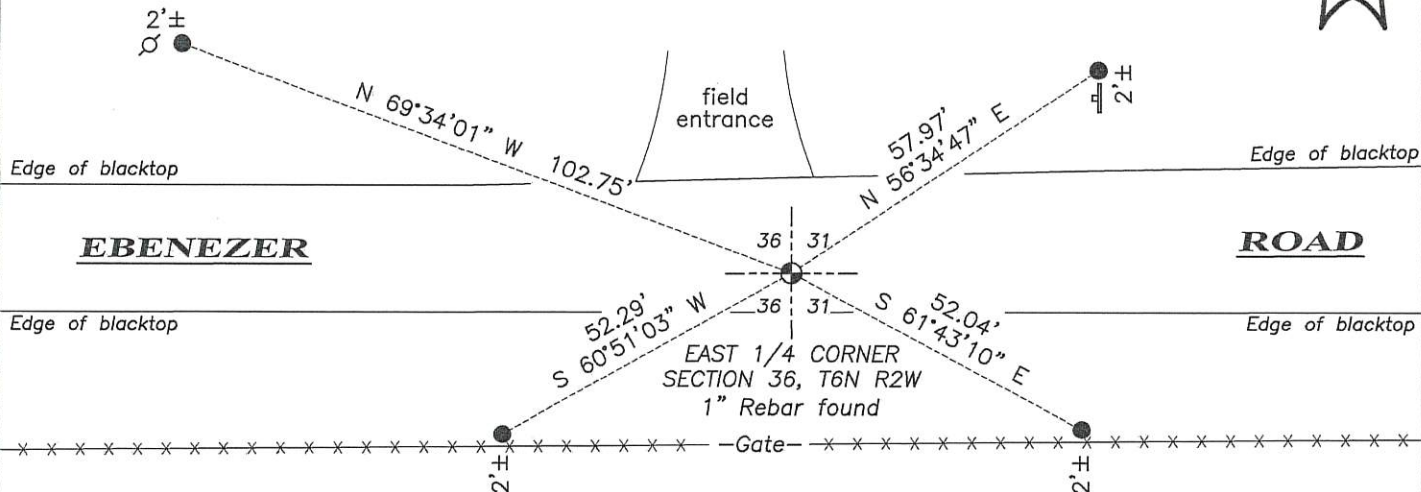
Witnesses to corner location Shane Austin, Owen Austin.
Drawn by: Owen Austin

SKETCH:

LEGEND

- ⊕ Section Corner—as designated
- 3/4" x 18" rebar set
- x-x-x- Existing fence
- ⊕ Existing utility pole
- ⊕ Existing sign

F I E L D



F I E L D

