

U.S. PUBLIC LAND SURVEY MONUMENT RECORD - GRANT COUNTY, WI

Section 32, Town 6 North Range 2 West, Town of Fennimore (a)

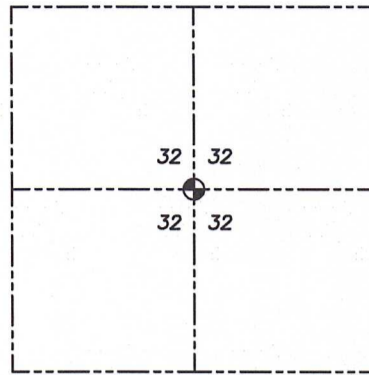
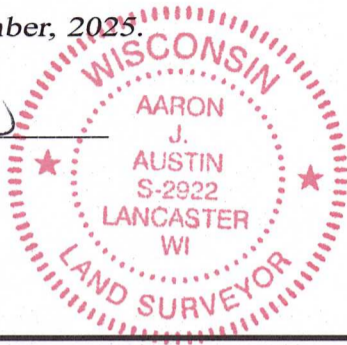
NOTE: This form is intended and designed to fulfill all requirements of the Wisconsin Administrative Code Chapter A-E 7.08, U.S. Public Land Survey Monument Record (3) (a) (b) (c) (d) (e) (f) (g) (h) (i).

CERTIFICATE: (i)

I, Aaron J. Austin, Wisconsin Professional Land Surveyor, do hereby certify that the corner location on this record was determined by me and/or under my direct supervision and that this U.S. Public Land Survey Monument Record is correct and complete to the best of my knowledge and belief.

Dated this 21st day of November, 2025.

Aaron J. Austin
Aaron J. Austin, PLS-2922



⊕ = CORNER LOCATION

Grant County Coordinates:
NAD 83 (2011)
Northing: 561,616.72
Easting: 839,006.42

HISTORY OF CORNER ESTABLISHMENT:

Corner was not set with the Original Government Survey.
Joel Barber established a Stone on a Survey Filed in Book B, Page 540 dated 6-6-1875.
Bruce Bowden found a Stone on a Survey Filed in Book K, Page 138 dated 7-20-1986.
Joseph Niles found a Stone on a Survey Filed in Book 30, Page 9 dated 8-10-2011.

DESCRIPTION OF CORNER EVIDENCE FOUND: (b) (f) (g) (h)

I found the Stone and set four witness corners after I verified the Monument's location with G.P.S. and E.D.M. methods.

DESCRIPTION OF CORNER AND WITNESS MONUMENTS: references and accessories used to perpetuate the original or re-established location of this corner. (c) (d) (e)

Witnesses to corner location Owen Austin, Tanner Austin.
Drawn by: Owen Austin.

SKETCH:

LEGEND

- ⊕ Section Corner—as designated
- 3/4" x 18" rebar set
- x—x— Existing fence

