

62111

# U.S. PUBLIC LAND SURVEY MONUMENT RECORD - GRANT COUNTY, WI

Section 32, Town 6 North Range 2 West, Town of Fennimore (a)

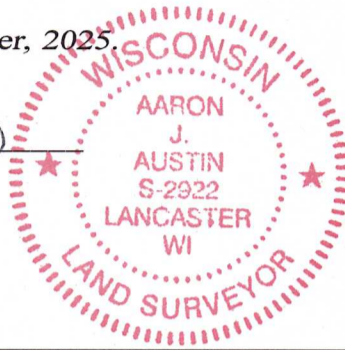
NOTE: This form is intended and designed to fulfill all requirements of the Wisconsin Administrative Code Chapter A-E 7.08, U.S. Public Land Survey Monument Record (3) (a) (b) (c) (d) (e) (f) (g) (h) (i).

**CERTIFICATE:** (i)

I, Aaron J. Austin, Wisconsin Professional Land Surveyor, do hereby certify that the corner location on this record was determined by me and/or under my direct supervision and that this U.S. Public Land Survey Monument Record is correct and complete to the best of my knowledge and belief.

Dated this 21st day of November, 2025.

*Aaron J. Austin*  
Aaron J. Austin, PLS-2922



⊕ = CORNER LOCATION

Grant County Coordinates:  
NAD 83 (2011)  
Northing: 564,258.98  
Easting: 836,322.56

HISTORY OF CORNER ESTABLISHMENT:

Original corner was set in 1832 by Harvey Parke.  
Larry Austin set a 1" Rebar with a Grant County Aluminum Cap and prepared a Survey Monument Record dated 11-1-1999.

DESCRIPTION OF CORNER EVIDENCE FOUND: (b) (f) (g) (h)

I found the Aluminum Capped Rebar and three witness corners Larry set. I set one additional witness corner and verified the Monument's location with G.P.S. and E.D.M. methods.

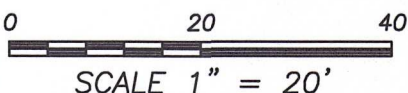
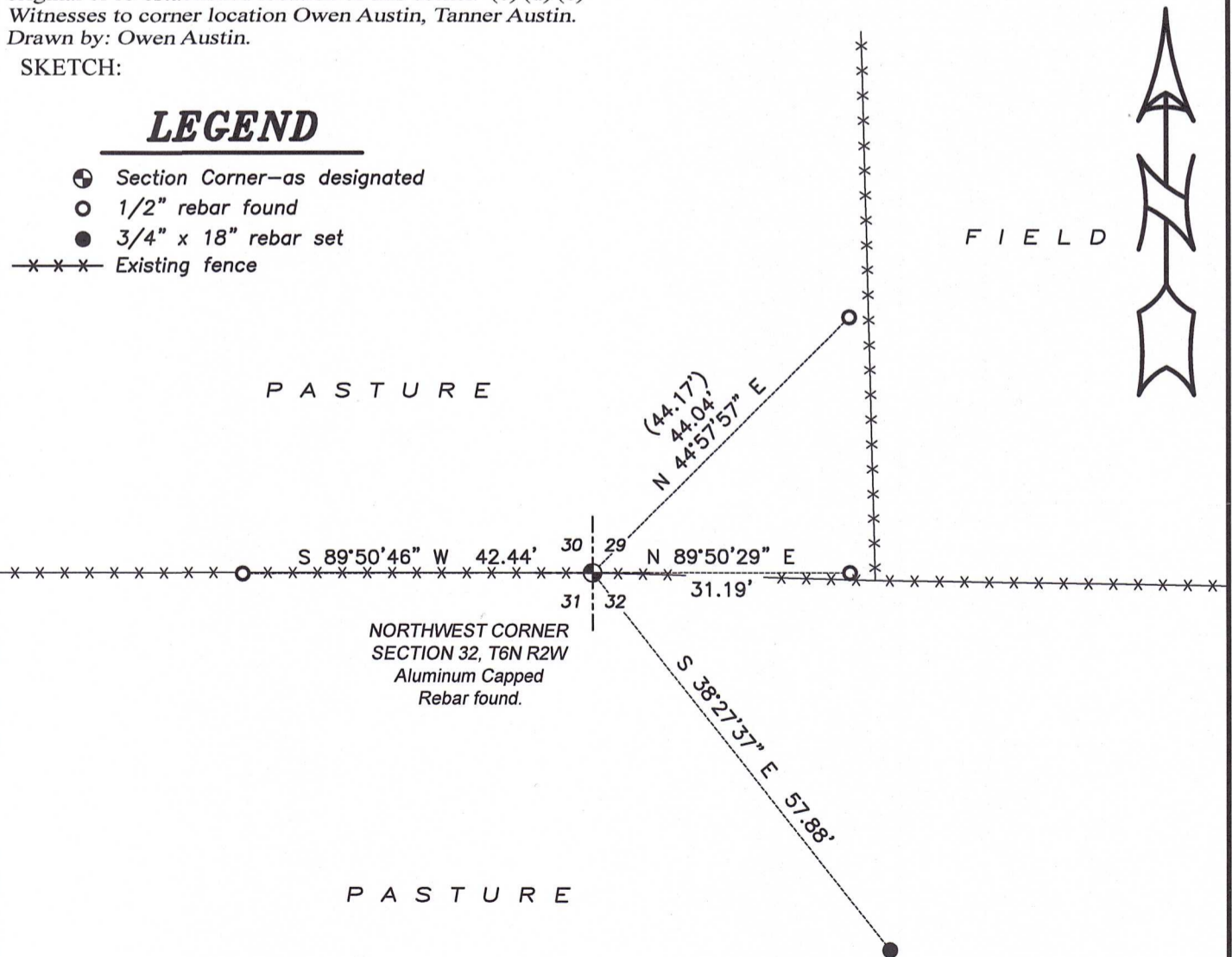
DESCRIPTION OF CORNER AND WITNESS MONUMENTS: references and accessories used to perpetuate the original or re-established location of this corner. (c) (d) (e)

Witnesses to corner location Owen Austin, Tanner Austin.  
Drawn by: Owen Austin.

SKETCH:

## LEGEND

- ⊕ Section Corner—as designated
- 1/2" rebar found
- 3/4" x 18" rebar set
- x-x-x- Existing fence



# GRANT COUNTY CERTIFIED LAND CORNER

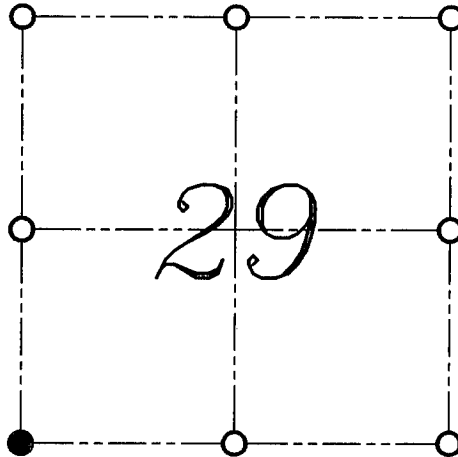
**CERTIFICATE:**

I, LARRY L. AUSTIN, DO HEREBY CERTIFY THAT ON 19th DAY OF OCTOBER, 1999, I FOUND EVIDENCE OF THE SOUTHWEST CORNER OF SECTION 29, TOWN 6 NORTH, RANGE 2 WEST, OF THE FOURTH PRINCIPAL MERIDIAN, AND I RE-ESTABLISHED SAID CORNER ACCORDING TO THE WISCONSIN STATUTES AS SHOWN AND DESCRIBED HEREON.

DATED THIS 1st DAY OF NOVEMBER, 1999

*Larry L. Austin*  
LARRY L. AUSTIN S-1903

CORNER NUMBER 111



SEAL

● = CORNER LOCATION  
SOUTHWEST CORNER OF  
SECTION 29, T 6 N R 2 W  
TOWN OF FENNIMORE

**HISTORY OF ORIGINAL CORNER ESTABLISHMENT:**

CORNER WAS SET IN 1832 BY HARVEY PARKE.  
IN 1850 GEO STUNTZ FOUND THE ORIGINAL POST.

**DESCRIPTION OF CORNER EVIDENCE FOUND:**

I FOUND AN EXISTING EAST-WEST FENCE WHICH I ACCEPTED FOR NORTHING.  
EASTING WAS ESTABLISHED USING PROPORTIONING METHODS.  
VERIFIED THIS LOCATION USING E.D.M. AND G.P.S. METHODS.

DESCRIPTION OF CORNER AND WITNESS MONUMENTS, REFERENCES AND ACCESSORIES  
USED TO PERPETUATE THE ORIGINAL OR RE-ESTABLISHED LOCATION OF THIS CORNER:  
WITNESS TO THE CORNER LOCATION: BOBBY SEDGWICK ; SHELBY BLINDERT

**SKETCH:**

