

62107

# U.S. PUBLIC LAND SURVEY MONUMENT RECORD - GRANT COUNTY, WI

Section 34, Town 6 North Range 2 West, Town of Fennimore (a)

NOTE: This form is intended and designed to fulfill all requirements of the Wisconsin Administrative Code Chapter A-E 7.08, U.S. Public Land Survey Monument Record (3) (a) (b) (c) (d) (e) (f) (g) (h) (i).

### CERTIFICATE: (i)

I, Aaron J. Austin, Wisconsin Professional Land Surveyor, do hereby certify that the corner location on this record was determined by me and/or under my direct supervision and that this U.S. Public Land Survey Monument Record is correct and complete to the best of my knowledge and belief.

Dated this 15th day of November, 2024.

*Aaron J. Austin*  
Aaron J. Austin, S-2922



# 34

● = CORNER LOCATION

Grant County Coordinates:  
NAD 83 (2011)  
Northing: 564,262.92  
Easting: 846,994.37

### HISTORY OF CORNER ESTABLISHMENT:

Original corner was set in 1833 by Harvey Parke.  
David Davis found a Railroad Spike on a Survey filed in Book H Page 69 dated 4-16-1980.  
Douglas Malliet found a Railroad Spike on a Survey filed in Book L, Page 356 dated 12-2-1988.  
Larry Austin found a Railroad Spike on a Survey filed in Book X, Page 74 dated 5-13-1993.

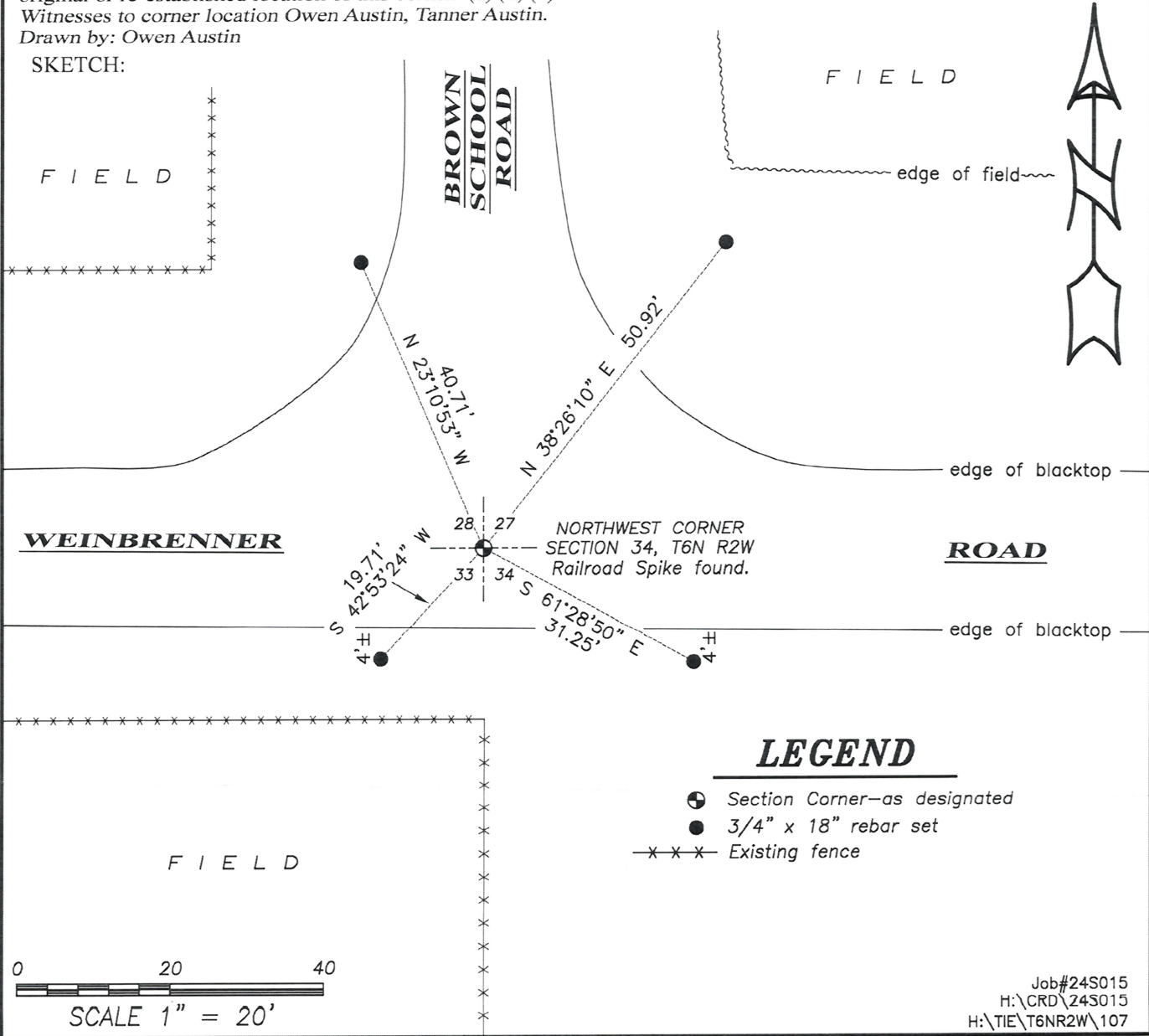
### DESCRIPTION OF CORNER EVIDENCE FOUND: (b) (f) (g) (h)

I found a Railroad Spike and set four witness corners after I verified the Monument's location with G.P.S. and E.D.M. methods.

### DESCRIPTION OF CORNER AND WITNESS MONUMENTS, references and accessories used to perpetuate the original or re-established location of this corner. (c) (d) (e)

Witnesses to corner location Owen Austin, Tanner Austin.  
Drawn by: Owen Austin

### SKETCH:



### LEGEND

- Section Corner—as designated
- 3/4" x 18" rebar set
- x-x-x- Existing fence