

U.S. PUBLIC LAND SURVEY MONUMENT RECORD - GRANT COUNTY, WI

Section 25, Town 6 North Range 2 West, Town of Fennimore

CERTIFICATE:

I, Aaron J. Austin, do hereby certify that the corner location on this record was determined by me and/or under my direct supervision and that this U.S. Public Land Survey Monument Record is correct and complete to the best of my knowledge and belief.

Dated this 1st day of May, 2013.

Aaron J. Austin
 Aaron J. Austin, S-2922



HISTORY OF CORNER ESTABLISHMENT:

Corner originally set in 1832 by Sibley. In 1846 Stuntz measured to this corner on a survey filed in Book "B", Page 19. No other record found for this corner.

DESCRIPTION OF CORNER EVIDENCE FOUND:

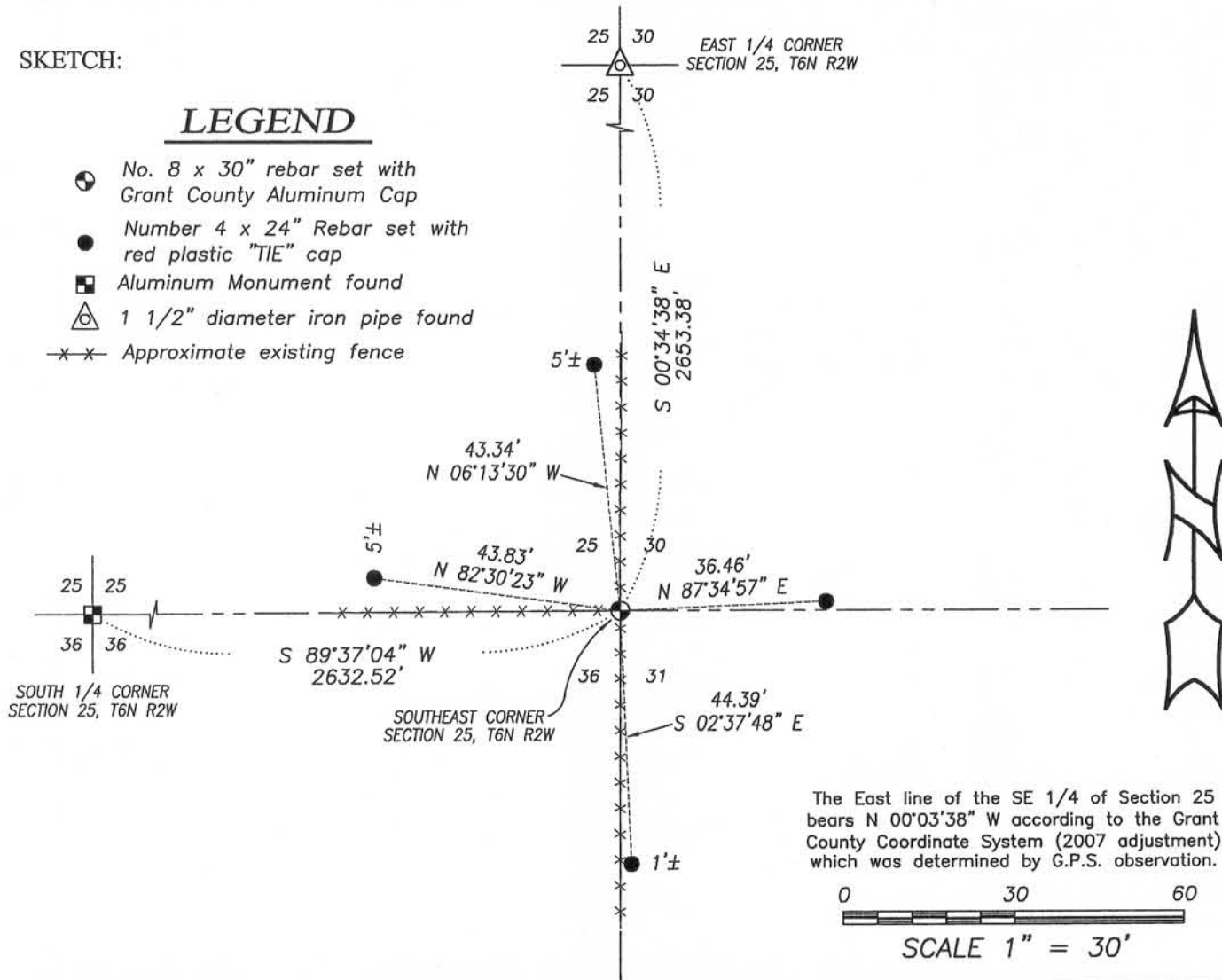
I found an occupational fence corner at this location. This corner fit well with the occupied 40 corner to the West and creek call in the original notes. I verified this location by G.P.S. methods.

DESCRIPTION OF CORNER AND WITNESS MONUMENTS, references and accessories used to perpetuate the original or re-established location of this corner. Witnesses to corner location Shane Austin.

SKETCH:

LEGEND

- ⊕ No. 8 x 30" rebar set with Grant County Aluminum Cap
- Number 4 x 24" Rebar set with red plastic "TIE" cap
- ⊠ Aluminum Monument found
- △ 1 1/2" diameter iron pipe found
- x-x- Approximate existing fence



4211 HWY 81 E, LANCASTER, WI 53813
 PHONE: 608-723-6363 FAX: 608-723-6702

JOB NO: 12s030
 G:\HMP\T6NR2W\25
 H:\TIE\T6NR2W\101

FIELDBOOK: TDSR
 DRAWN BY: AJ AUSTIN
 CREW: SW AUSTIN