

# GRANT COUNTY CERTIFIED LAND CORNER

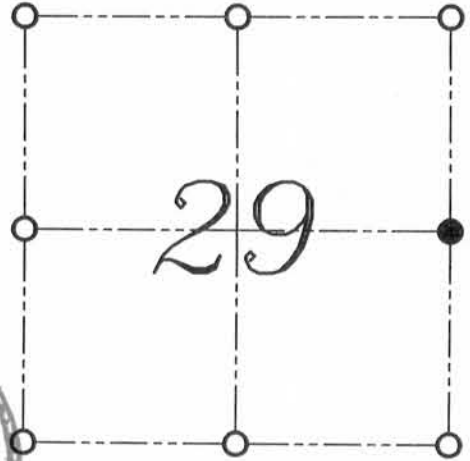
**CERTIFICATE:**

CORNER NUMBER 96

I, LARRY L. AUSTIN, DO HEREBY CERTIFY THAT ON 19th DAY OF OCTOBER, 1999, I FOUND EVIDENCE OF THE EAST 1/4 CORNER OF SECTION 29, TOWN 6 NORTH, RANGE 2 WEST, OF THE FOURTH PRINCIPAL MERIDIAN, AND I RE-ESTABLISHED SAID CORNER ACCORDING TO THE WISCONSIN STATUTES AS SHOWN AND DESCRIBED HEREON.

DATED THIS 1st DAY OF NOVEMBER, 1999

*Larry L. Austin*  
LARRY L. AUSTIN S-1903



● = CORNER LOCATION

EAST 1/4 CORNER OF  
SECTION 29, T 6 N R 2 W  
TOWN OF FENNIMORE



**HISTORY OF ORIGINAL CORNER ESTABLISHMENT:**

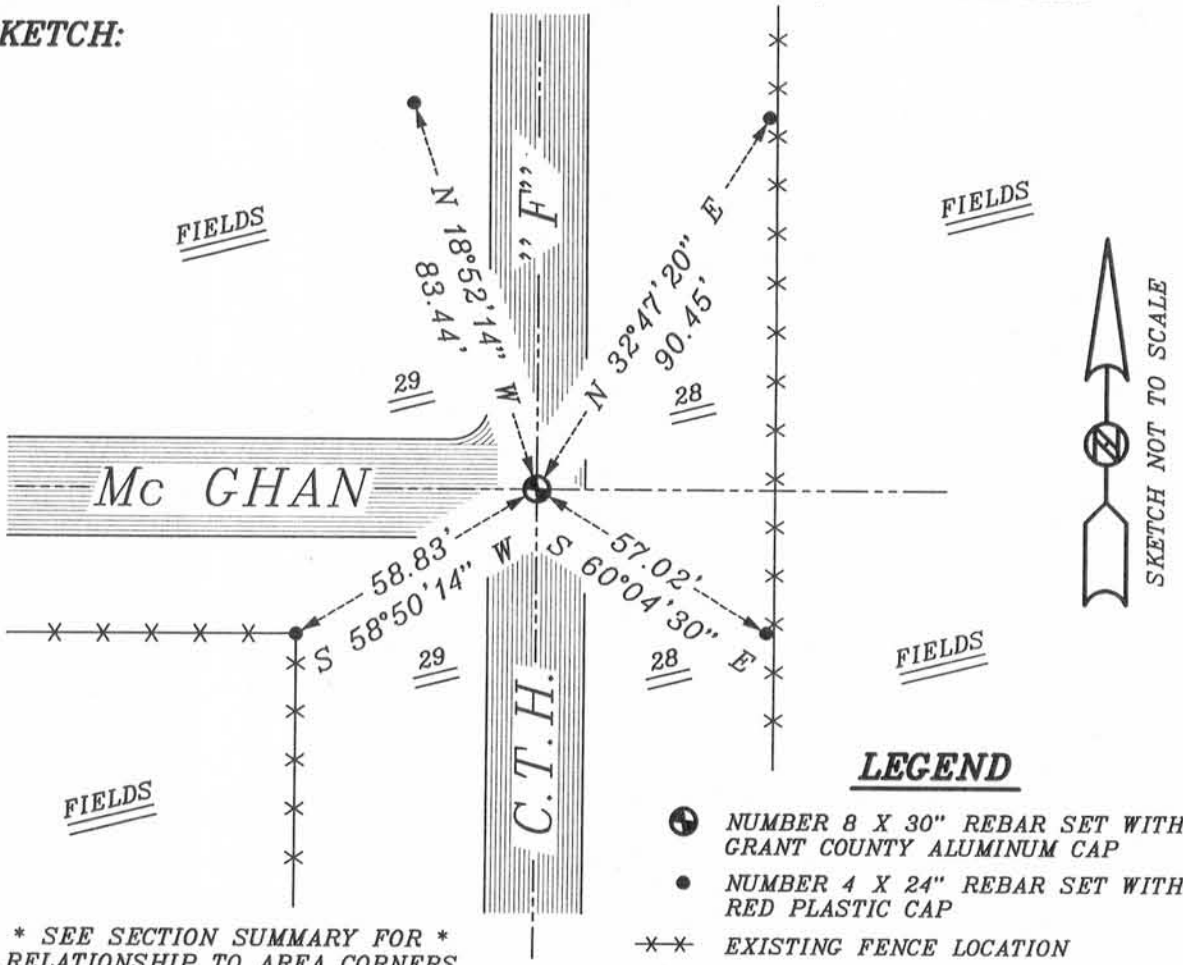
CORNER WAS SET IN 1832 BY HARVEY PARKE.  
IN 1850 GEO STUNTZ FOUND THE ORIGINAL POST.

**DESCRIPTION OF CORNER EVIDENCE FOUND:**

THE CORNER WAS NOT FOUND DO TO HIGHWAY CONSTRUCTION. I RESET THE CORNER BASED ON OCCUPATIONAL EVIDENCE. THIS LOCATION FIT WELL WITH AREA CORNERS. VERIFIED THIS LOCATION USING E.D.M. AND G.P.S. METHODS.

**DESCRIPTION OF CORNER AND WITNESS MONUMENTS, REFERENCES AND ACCESSORIES USED TO PERPETUATE THE ORIGINAL OR RE-ESTABLISHED LOCATION OF THIS CORNER:**  
WITNESS TO THE CORNER LOCATION: BOBBY SEDGWICK ; SHELBY BLINDERT

**SKETCH:**



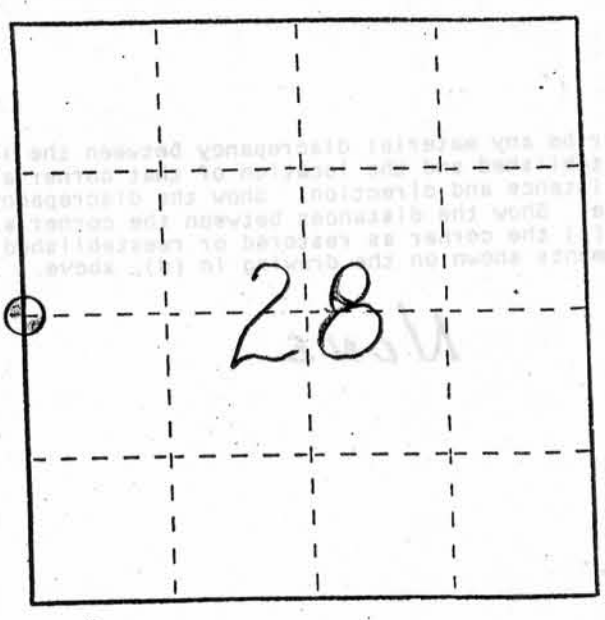
\* SEE SECTION SUMMARY FOR \*  
RELATIONSHIP TO AREA CORNERS

# U. S. PUBLIC LAND SURVEY MONUMENT RECORD

INSTRUCTIONS: This record shall show the location of the corner and shall include all of the following nine elements (a through i).

- (a) Identify the corner by reference to the U.S. public land survey system.
- ⊕ = Corner monument restored.

WEST 1/4 CORNER OF  
SECTION 28, TOWN 6  
NORTH, RANGE 2 WEST,  
FENNIMORE TOWNSHIP,  
GRANT COUNTY, WISC

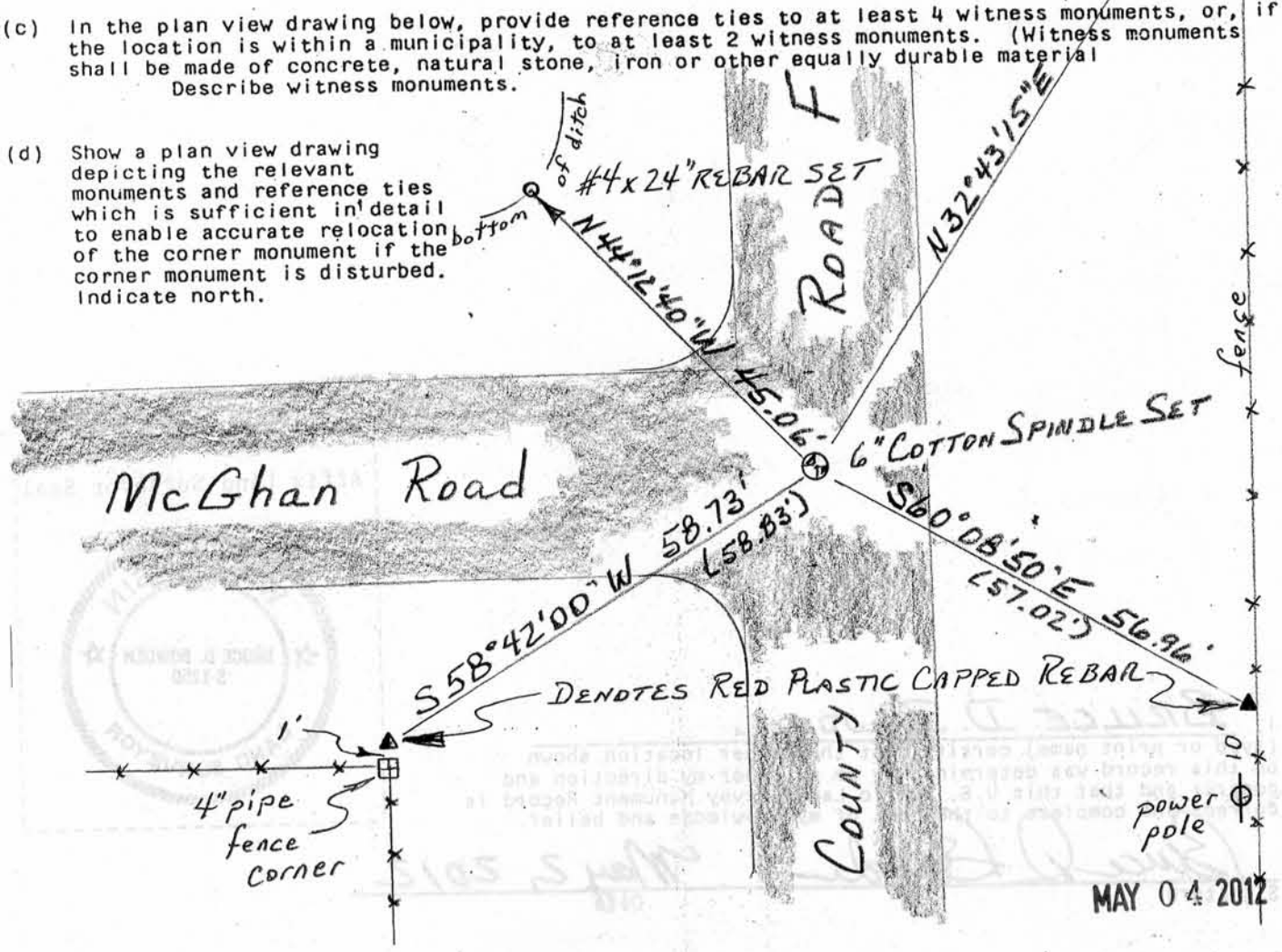


- (b) Describe any record evidence, monument evidence, occupational evidence, testimonial evidence or any other material evidence you considered, and whether the monument was found or placed.

I SET THE COTTON SPINDLE FROM THREE TIES SHOWN ON THE 1999 TIE SHEET BY L.L. AUSTIN. CONSTRUCTION HAD REMOVED THE CORNER MONUMENT AND THE NORTHWEST TIE.

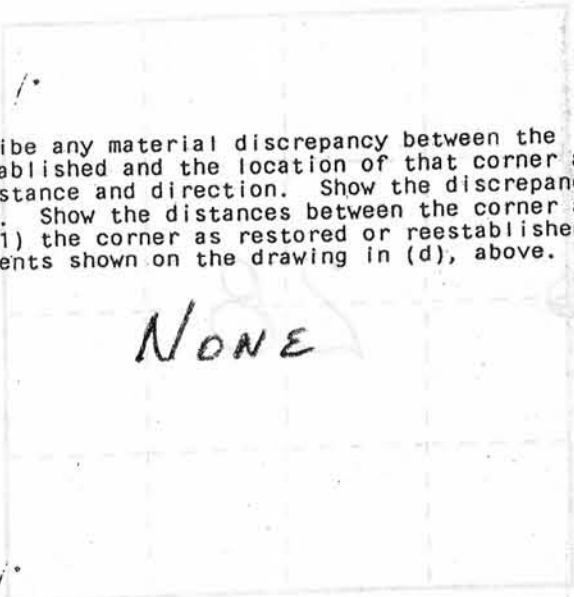
- (c) In the plan view drawing below, provide reference ties to at least 4 witness monuments, or, if the location is within a municipality, to at least 2 witness monuments. (Witness monuments shall be made of concrete, natural stone, iron or other equally durable material. Describe witness monuments.)

- (d) Show a plan view drawing depicting the relevant monuments and reference ties which is sufficient in detail to enable accurate relocation of the corner monument if the corner monument is disturbed. Indicate north.



U.S. PUBLIC LAND SURVEY MONUMENT RECORD

(e) Describe any material discrepancy between the location of the corner as restored or reestablished and the location of that corner as previously restored or reestablished by distance and direction. Show the discrepancy on the plan view drawing under (d), above. Show the distances between the corner as previously restored or reestablished and (1) the corner as restored or reestablished, and (2) to at least 2 of the witness monuments shown on the drawing in (d), above.



NONE

(f) Was the corner restored through acceptance of (1) an obliterated evidence location, or, (2) a found perpetuated location?

(2) A FOUND PERPETUATED LOCATION

(g&h) Was the corner reestablished through lost corner proportionate methods? If so, show the method, including the directions and distances to other public land survey corners used as evidence or used for proportioning in determining the corner location?

No.

Affix Land Surveyor Seal



(i) I, BRUCE D. BOWDEN,  
(type or print name) certify that the corner location shown on this record was determined by me or under my direction and control and that this U.S. Public Land Survey Monument Record is correct and complete to the best of my knowledge and belief.

Bruce D. Bowden  
Signature

May 2, 2012  
Date