

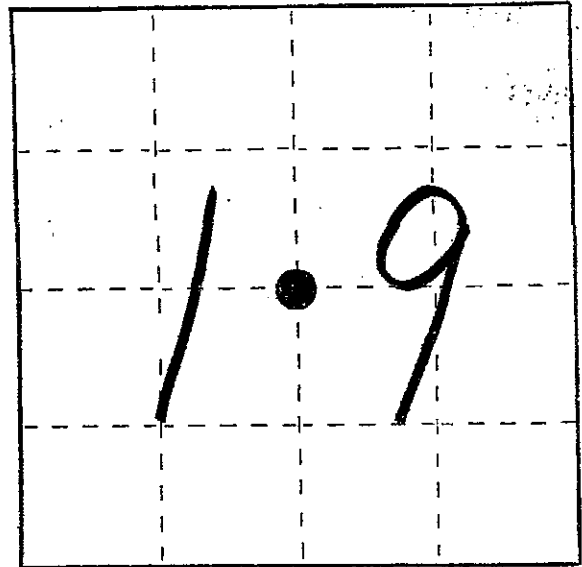
U. S. PUBLIC LAND SURVEY MONUMENT RECORD

INSTRUCTIONS:

This record shall show the location of the corner and shall include all of the following nine elements (a. through. i):

- (a) Identify the corner by reference to the U.S. public land survey system.

● = Corner monument restored.

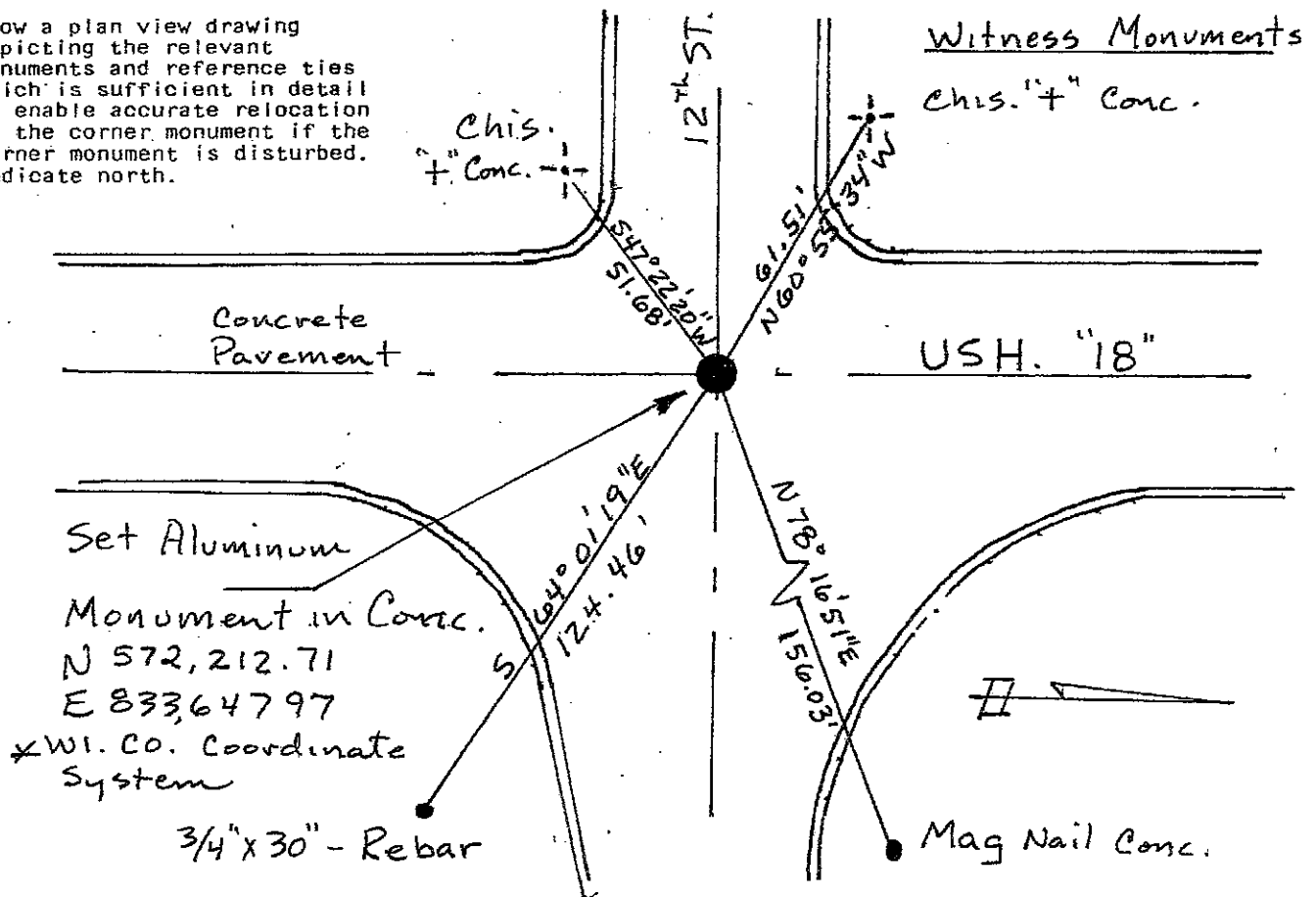


- (b) Describe any record evidence, monument evidence, occupational evidence, testimonial evidence or any other material evidence you considered, and whether the monument was found or placed.

No Monument Found, Accepted Ties and Coordinate Location of Transportation Project Plat NO: 16.50-00-21-4.05 Placed Aluminum Monument in Concrete.

- (c) In the plan view drawing below, provide reference ties to at least 4 witness monuments, or, if the location is within a municipality, to at least 2 witness monuments. (Witness monuments shall be made of concrete, natural stone, iron or other equally durable material.) Describe witness monuments.

- (d) Show a plan view drawing depicting the relevant monuments and reference ties which is sufficient in detail to enable accurate relocation of the corner monument if the corner monument is disturbed. Indicate north.



- (e) Describe any material discrepancy between the location of the corner as restored or reestablished and the location of that corner as previously restored or reestablished by distance and direction. Show the discrepancy on the plan view drawing under (d), above. Show the distances between the corner as previously restored or reestablished and (1) the corner as restored or reestablished, and (2) to at least 2 of the witness monuments shown on the drawing in (d), above.

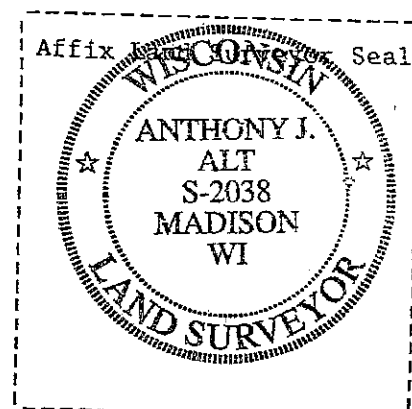
No discrepancy as restored.

- (f) Was the corner restored through acceptance of (1) an obliterated evidence location, or, (2) a found perpetuated location?

Accepted ties and Coordinate Location
As shown in Transportation Project Plat
No: 1650-00-21-4.05.

- (g&h) Was the corner reestablished through lost corner proportionate methods? If so, show the method, including the directions and distances to other public land survey corners used as evidence or used for proportioning in determining the corner location?

NA



- (i) I, Anthony J. Alt
(type or print name) certify that the corner location shown on this record was determined by me or under my direction and control and that this U.S. Public Land Survey Monument Record is correct and complete to the best of my knowledge and belief.

Signature

Date

Anthony J. Alt

6-20-07

U. S. PUBLIC LAND SURVEY MONUMENT RECORD

REC'D 1989
RECEIVED

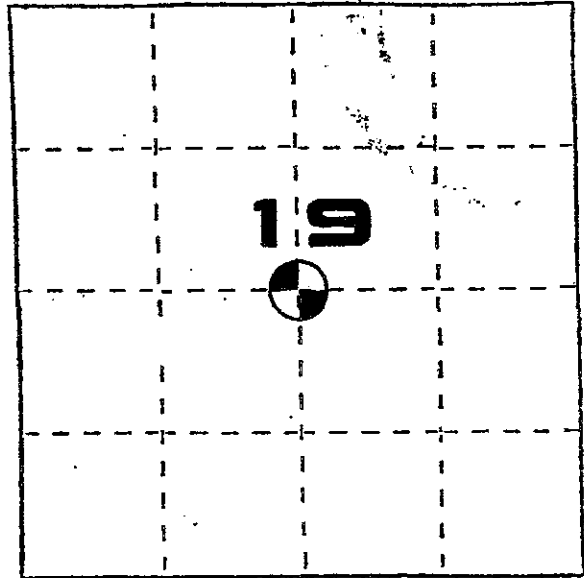
INSTRUCTIONS: This record shall show the location of the corner and shall include all of the following nine elements (a through i).

(a) Identify the corner by reference to the U.S. public land survey system.

⊙ = Corner monument restored.

Center of Section 19, T6N, R2W, City of Fennimore, (formerly Town of Fennimore), Grant County, Wisconsin.

Date of survey: August 10, 1989.



(b) Describe any record evidence, monument evidence, occupational evidence, testimonial evidence or any other material evidence you considered, and whether the monument was found or placed.

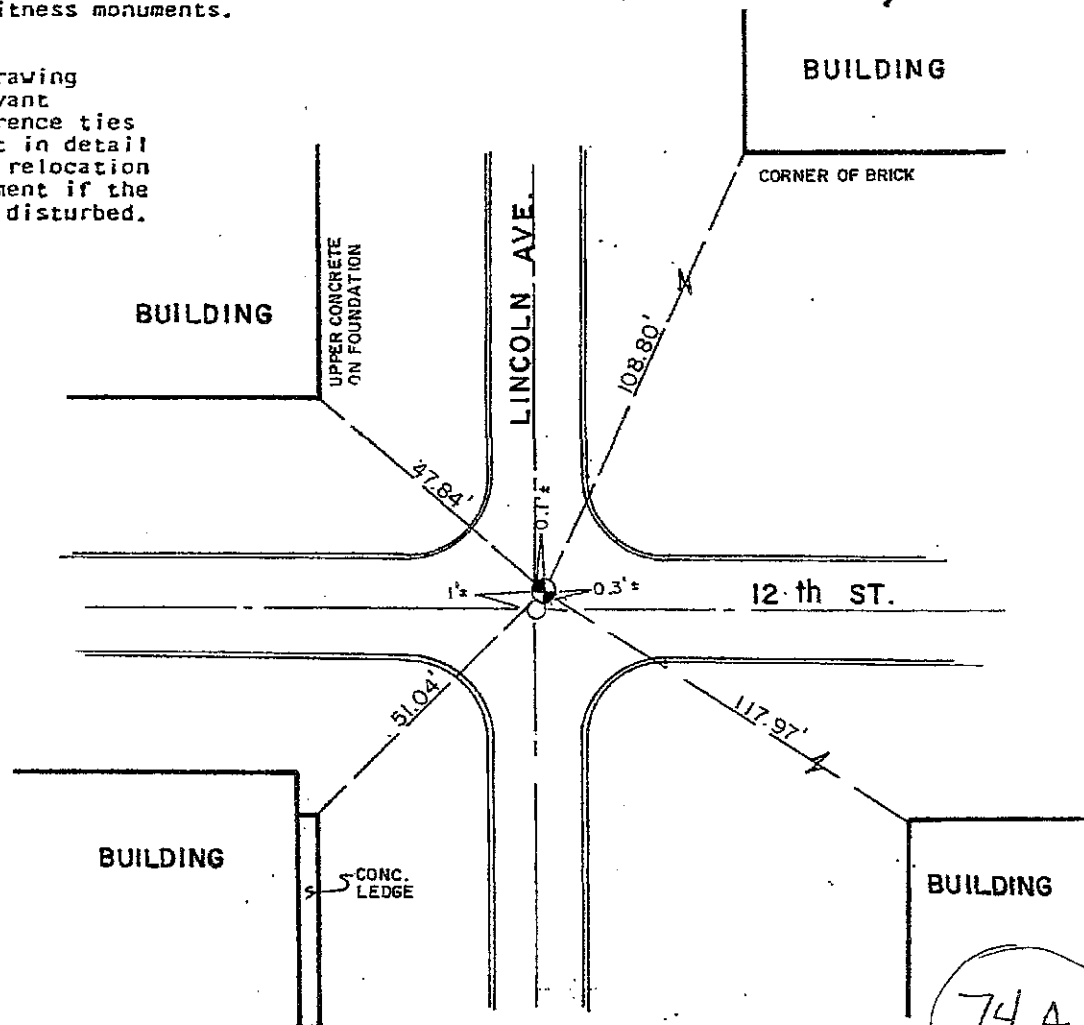
I established the p.k. nail at the Center of Section 19 by surveying to property stakes along the North and South sides of 12th Street and along the East and West sides of Lincoln Avenue. The point established is 0.1' East of the centerline crack of Lincoln Avenue and 1' North of the centerline crack of 12th Street.

(c) In the plan view drawing below, provide reference ties to at least 4 witness monuments, or, if the location is within a municipality, to at least 2 witness monuments. (Witness monuments shall be made of concrete, natural stone, iron or other equally durable material.) Describe witness monuments.

(d) Show a plan view drawing depicting the relevant monuments and reference ties which is sufficient in detail to enable accurate relocation of the corner monument if the corner monument is disturbed. Indicate north.

LEGEND

- ⊙ P.K. NAIL SET
- MANHOLE



SCALE: 1" = 30'

74A

(e) Describe any material discrepancy between the location of the corner as restored or reestablished and the location that corner as previously restored or reestablished by distance and direction. Show the discrepancy on the plan view & (ing under (d), above. Show the distances between the corner as previously restored or reestablished and (1) the corner as restored or reestablished, and (2) to at least 2 of the witness monuments shown on the drawing in (d), above.

The corner as established is 6.35 feet North of and 1.15 feet West of a straight line intersection of the E-W 1/4 line and N-S 1/4 line.

(f) Was the corner restored through acceptance of (1) an obliterated evidence location, or, (2) a found, perpetuated location?

An obliterated evidence location.

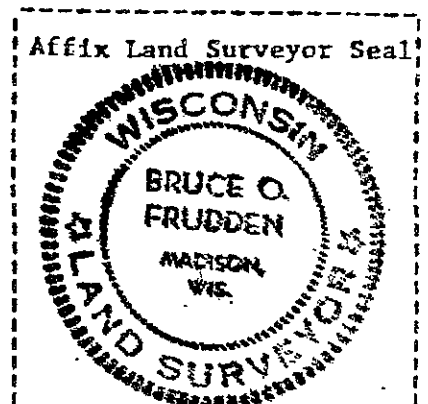
(g&h) Was the corner reestablished through lost corner proportionate methods? If so, show the method, including the directions and distances to other public land survey corners used as evidence or used for proportioning in determining the corner location?

Not a lost corner.

(1) I, Bruce O. Frudden
(type or print name) certify that the corner location shown on this record was determined by me or under my direction and control and that this U.S. Public Land Survey Monument Record is correct and complete to the best of my knowledge and belief.

Bruce O. Frudden
Signature

11-29-89
Date



64074.5