

U.S. PUBLIC LAND SURVEY MONUMENT RECORD - GRANT COUNTY, WI

Section 20, Town 6 North Range 2 West, Town of Fennimore (a)

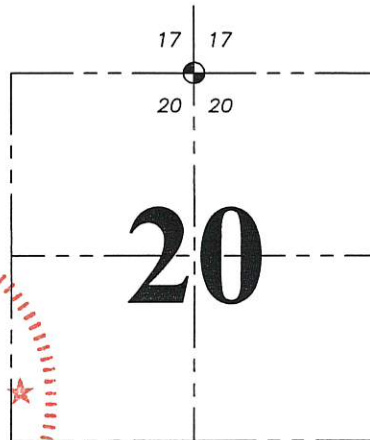
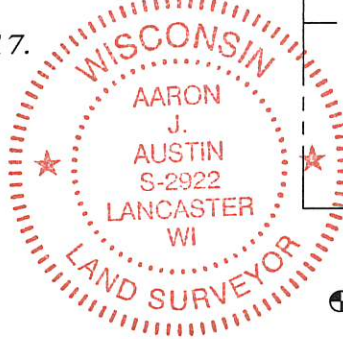
NOTE: This form is intended and designed to fulfill all requirements of the Wisconsin Administrative Code Chapter A-E 7.08, U.S. Public Land Survey Monument Record (3) (a) (b) (c) (d) (e) (f) (g) (h) (i).

CERTIFICATE: (i)

I, Aaron J. Austin, Wisconsin Professional Land Surveyor, do hereby certify that the corner location on this record was determined by me and/or under my direct supervision and that this U.S. Public Land Survey Monument Record is correct and complete to the best of my knowledge and belief.

Dated this 27th day of November, 2017.

Aaron J. Austin
Aaron J. Austin, S-2922



⊕ = CORNER LOCATION

HISTORY OF CORNER ESTABLISHMENT:

Original corner was set Harvey Parke in March, 1833.
Bruce Bowden found a Stone on a Survey dated 3-12-1987.
Bruce Frudden prepared a Survey Monument Record dated 11-29-1989.

DESCRIPTION OF CORNER EVIDENCE FOUND: (b) (f) (g) (h)

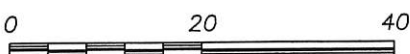
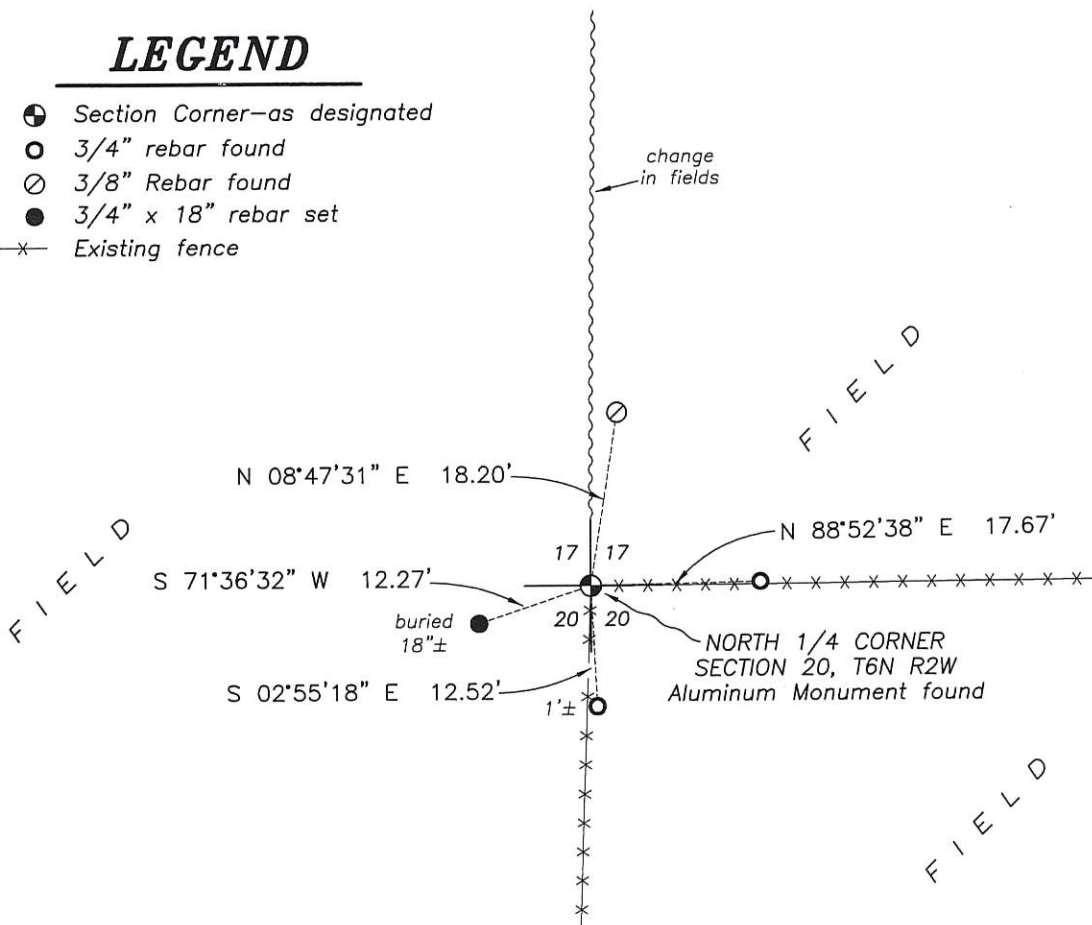
I found the Aluminum Monument as set by Frudden and three witness corners. I set one additional witness corner after I verified the corner's location with G.P.S. and E.D.M. methods.

DESCRIPTION OF CORNER AND WITNESS MONUMENTS, references and accessories used to perpetuate the original or re-established location of this corner. (c) (d) (e)
Witnesses to corner location Shane Austin, Aaron Austin.

SKETCH:

LEGEND

- ⊕ Section Corner—as designated
- 3/4" rebar found
- ⊙ 3/8" Rebar found
- 3/4" x 18" rebar set
- x-x- Existing fence



SCALE 1" = 20'

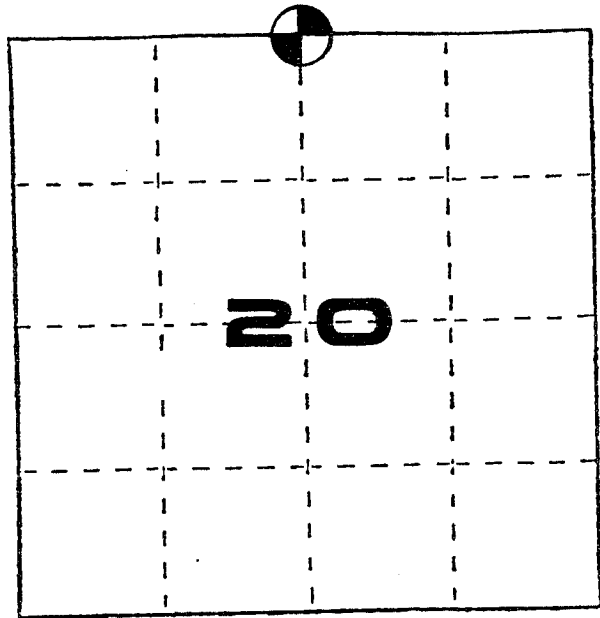
U. S. PUBLIC LAND SURVEY MONUMENT RECORD

INSTRUCTIONS : This record shall show the location of the corner and shall include all of the following nine elements (a through i).

- (a) Identify the corner by reference to the U.S. public land survey system.
- ⊕ = Corner monument restored.

North 1/4 corner of Section 20, T6N, R2W, Town of Fennimore, Grant County, Wisconsin.

Date of survey: September 26, 1989.



- (b) Describe any record evidence, monument evidence, occupational evidence, testimonial evidence or any other material evidence you considered, and whether the monument was found or placed

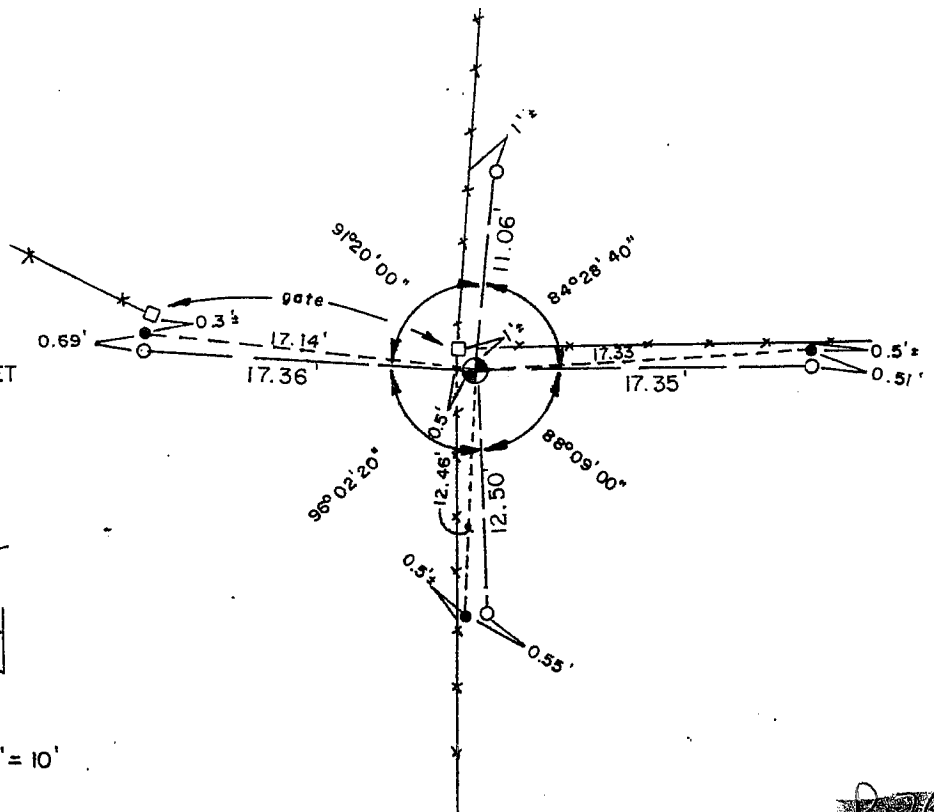
I found an 8" x 8" x 2" stone (origin unknown), as found by Bruce Bowden. I also found three of his tie points. I accepted the location of the stone. This location measures well to the NW corner and South 1/4 corner monuments as well as to the occupied fence corner at the NE corner of Section 20. It is also close to the occupied fence corner as shown below.

- (c) In the plan view drawing below, provide reference ties to at least 4 witness monuments, or, if the location is within a municipality, to at least 2 witness monuments. (Witness monuments shall be made of concrete, natural stone, iron or other equally durable material.) Describe witness monuments.

- (d) Show a plan view drawing depicting the relevant monuments and reference ties which is sufficient in detail to enable accurate relocation of the corner monument if the corner monument is disturbed. Indicate north.

LEGEND

- FENCE POST
- 3/8" ROD FOUND
- 3/4"x24" REBAR SET
- ⊕ CAST ALUMINUM MONUMENT SET



20

Describe any material discrepancy between the location of the corner as restored or reestablished and the location of that corner as previously restored or reestablished by distance and direction. Show the discrepancy on the plan view drawing under (d), above. Show the distances between the corner as previously restored or reestablished and (1) the corner as restored or reestablished, and (2) to at least 2 of the witness monuments shown on the drawing in (d), above.

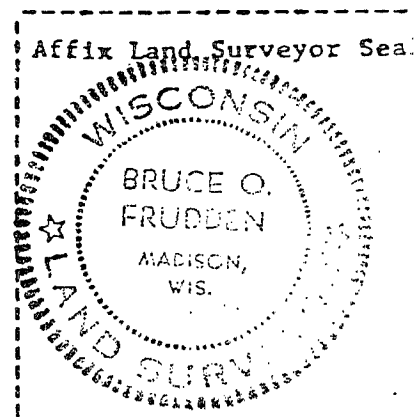
No known discrepancy.

(f) Was the corner restored through acceptance of (1) an obliterated evidence location, or, (2) a found perpetuated location?

A found perpetuated location.

(g&h) Was the corner reestablished through lost corner proportionate methods? If so, show the method, including the directions and distances to other public land survey corners used as evidence or used for proportioning in determining the corner location?

Not a lost corner.



(1) I, Bruce O. Frudden
(type or print name) certify that the corner location shown on this record was determined by me or under my direction and control and that this U.S. Public Land Survey Monument Record is correct and complete to the best of my knowledge and belief.

Bruce O. Frudden
Signature

11-29-89
Date