

U.S. PUBLIC LAND SURVEY MONUMENT RECORD

(As Required By s. A-E 7.08, WI Adm. Code)

History of original corner establishment and subsequent restorations and description of any record, monument, occupational, testimonial or other evidence considered:

I found and accepted a 4" concrete filled iron pipe as noted in a plat of survey by David Burbach dated 1/4/94. Pipe is tipped southeast and is in a concrete base.

Corner was: (Check All That Apply)

- Restored through acceptance of an obliterated evidence location
- Restored through acceptance of a found perpetuated location
- Considered a lost corner and reestablished through lost corner proportionate methods (include a plan view drawing showing distances and directions to other Public Land Survey Corners used for proportioning and determining the corner location)
- Restored or reestablished in a location that differs from a previous restoration or reestablishment (include a plan view drawing and indicate what was set and /or found)

Describe the monument and accessories used to perpetuate the location of this corner. (Include a plan view drawing and indicate what was set and/or found)

LEGEND • 3/8" Iron Rod Set (WELL ROD) 1" = 2' +/-
○ Landscape spike set

NOTE: CORNER IS SURROUNDED BY CULTIVATION

Grant Co. Coords.
N 574850.10
E 849582.87

Grant Co. Coord. Sys.

The 5/4

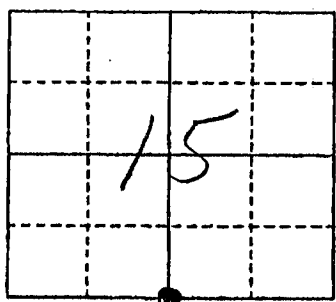
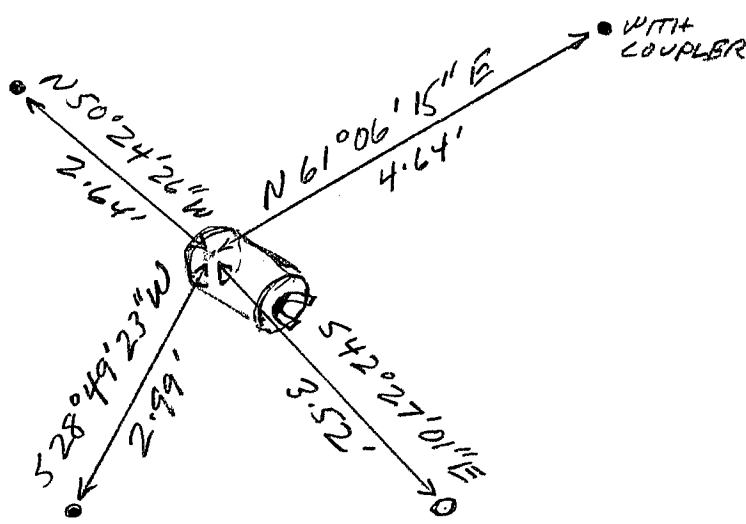
corner of Section 15

T. 6 N., R. 2 W

Grant County, Wisconsin

Job ID: 2005-51

Book # 9



● = Location of Corner

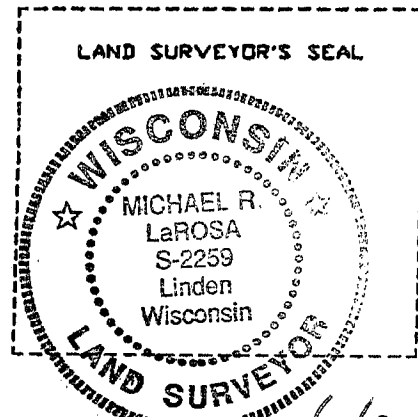
Michael R. LaRosa

Type or print name certify that the corner location shown on this record was determined by me or under my direction and control and that this U.S. Public Land Survey Monument Record is correct and complete to the best of my knowledge and belief.

Michael R. LaRosa 7/28/2005

Signature

Date



Index No. 66