

U.S. PUBLIC LAND SURVEY MONUMENT RECORD - GRANT COUNTY, WI

Section 15, Town 6 North Range 2 West, Town of Fennimore (a)

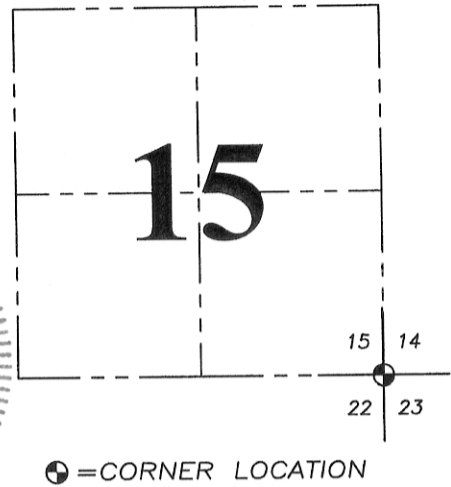
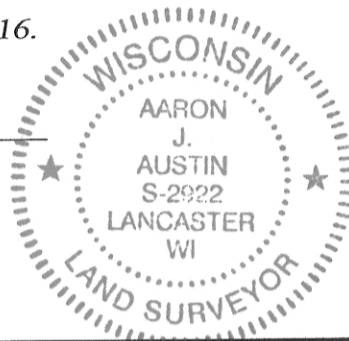
NOTE: This form is intended and designed to fulfill all requirements of the Wisconsin Administrative Code Chapter A-E 7.08, U.S. Public Land Survey Monument Record (3) (a) (b) (c) (d) (e) (f) (g) (h) (i).

CERTIFICATE: (i)

I, Aaron J. Austin, Wisconsin Professional Land Surveyor, do hereby certify that the corner location on this record was determined by me and/or under my direct supervision and that this U.S. Public Land Survey Monument Record is correct and complete to the best of my knowledge and belief.

Dated this 30th day of August, 2016.

Aaron J. Austin
 Aaron J. Austin, S-2922



Grant County Coordinates:
 WISCORS NAD 83 (2011)
 Northing: 574,857.81
 Easting: 852,247.17

☉ = CORNER LOCATION

HISTORY OF CORNER ESTABLISHMENT:

- 1833-Harvey Parke set the original corner.
- 1994-David Burbach reset the corner on a Survey filed in Book Y, Page 13.
- 2000-Larry Austin reset the corner on Certified Survey Map No. 619 and prepared a Grant County Certified Land Corner record.
- 2005-Michael LaRosa tied to the corner on a Survey filed in Book 17, Page 69.
- 2006-Michael LaRosa tied to the corner on a Survey filed in Book 19, Page 96.
- 2009-Michael LaRosa tied to the corner on a Survey filed in Book 25, Page 71.

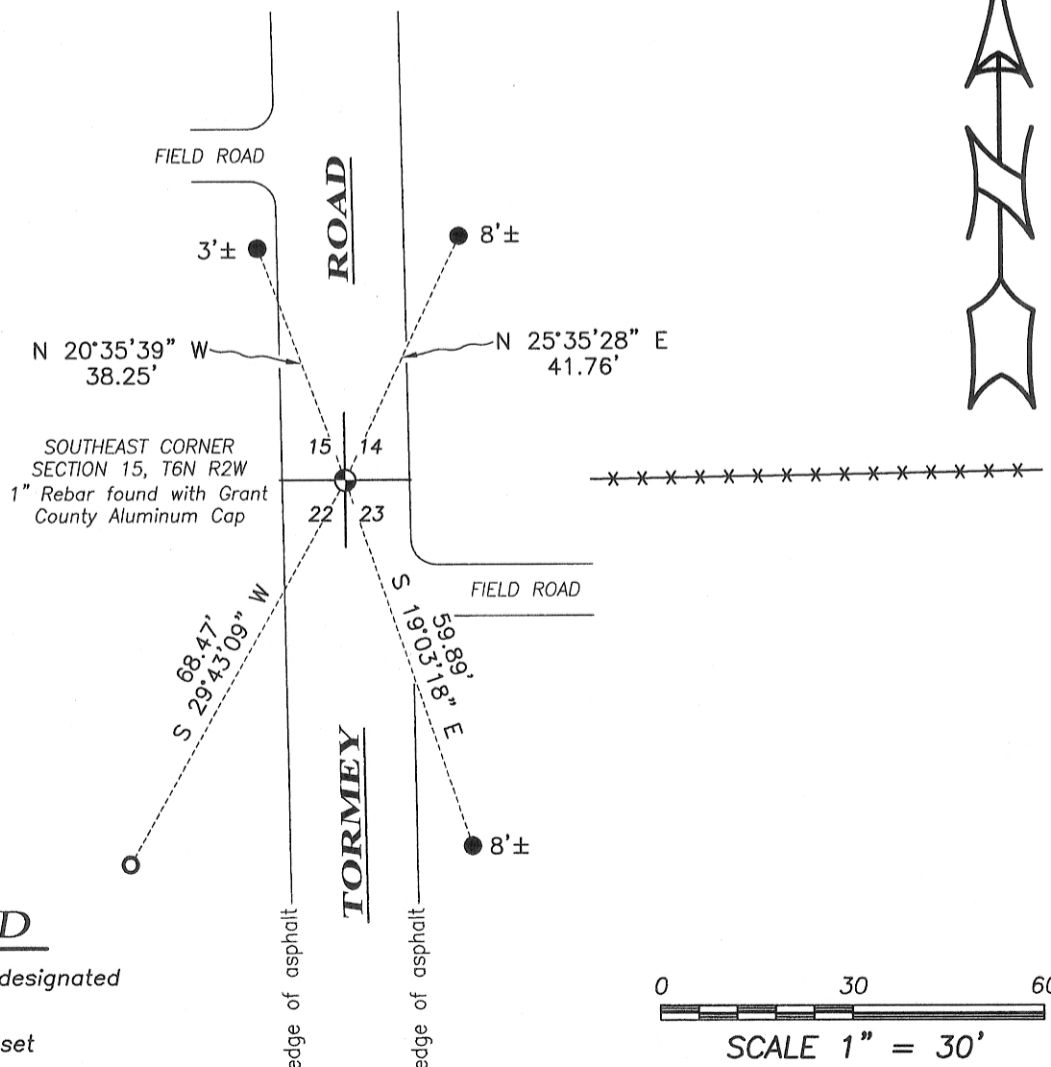
DESCRIPTION OF CORNER EVIDENCE FOUND: (b) (f) (g) (h)

The railroad spike set by Burbach was not recovered. No tie sheet was found for the corner set by Burbach. I found the 1" rebar with a Grant County Aluminum Cap in place as established by Larry Austin and one witness corner. I set three additional witness corners after I verified it's location with G.P.S. methods. Several other surveys have accepted the location established by L. Austin.

DESCRIPTION OF CORNER AND WITNESS MONUMENTS, references and accessories used to perpetuate the original or re-established location of this corner. (c) (d) (e)

Witnesses to corner location Shane Austin, Owen Austin.

SKETCH:



LEGEND

- ☉ Section Corner—as designated
- 1/2" Rebar found
- 1/2" x 12" Rebar set