

U.S. PUBLIC LAND SURVEY MONUMENT RECORD - GRANT COUNTY, WI

Section 18, Town 6 North Range 2 West, Town of Fennimore (a)

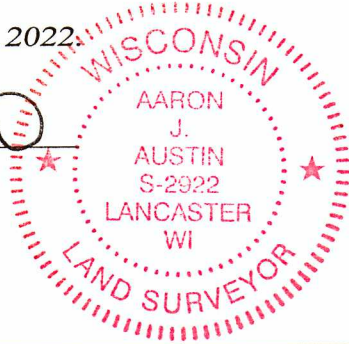
NOTE: This form is intended and designed to fulfill all requirements of the Wisconsin Administrative Code Chapter A-E 7.08, U.S. Public Land Survey Monument Record (3) (a) (b) (c) (d) (e) (f) (g) (h) (i).

CERTIFICATE: (i)

I, Aaron J. Austin, Wisconsin Professional Land Surveyor, do hereby certify that the corner location on this record was determined by me and/or under my direct supervision and that this U.S. Public Land Survey Monument Record is correct and complete to the best of my knowledge and belief.

Dated this 25th day of October, 2022.

Aaron J. Austin, S-2922



⊕ = CORNER LOCATION

Grant County Coordinates:  
NAD 83 (2011)  
Northing: 580,166.35  
Easting: 830,915.75

HISTORY OF CORNER ESTABLISHMENT:

Original corner was set in 1832 by Sibley.  
David Burbach set a 2" Iron Pipe on a Survey filed in Book U, Page 37 dated 5/24/1993.  
Bruce Bowden set a 1" Rebar and prepared a Survey Monument Record dated 5/8/1988.  
Bruce Bowden found a 1" Rebar and prepared a Survey Monument Record dated 11/19/1998.  
Bruce Bowden found a 1" Rebar and prepared a Survey Monument Record dated 6/15/2004.

DESCRIPTION OF CORNER EVIDENCE FOUND: (b) (f) (g) (h)

I found a 2" Iron Pipe in Burbach's location. I did not accept this location I set a 1 1/4" x 24" Rebar from the existing witness corners Bowden established in 1998. I also found and accepted ties set by Bowden in 2004. I verified the Monument's location with G.P.S. and E.D.M. methods.

DESCRIPTION OF CORNER AND WITNESS MONUMENTS, references and accessories used to perpetuate the original or re-established location of this corner. (c) (d) (e)

Witnesses to corner location Owen Austin, Tanner Austin.  
Drawn by Owen Austin

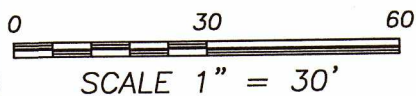
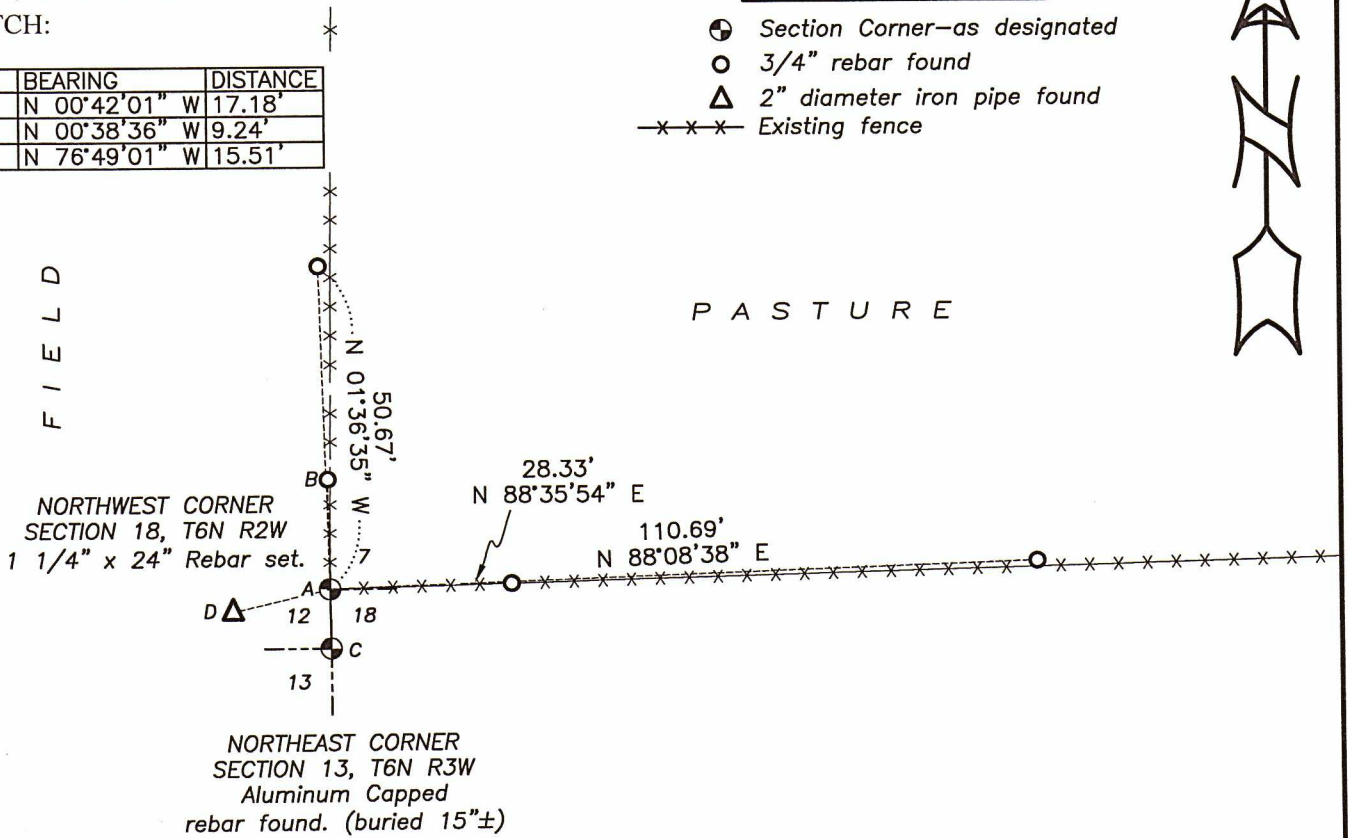
LEGEND

- ⊕ Section Corner—as designated
- 3/4" rebar found
- △ 2" diameter iron pipe found
- x-x-x- Existing fence



SKETCH:

LINE	BEARING	DISTANCE
A-B	N 00°42'01" W	17.18'
A-C	N 00°38'36" W	9.24'
A-D	N 76°49'01" W	15.51'



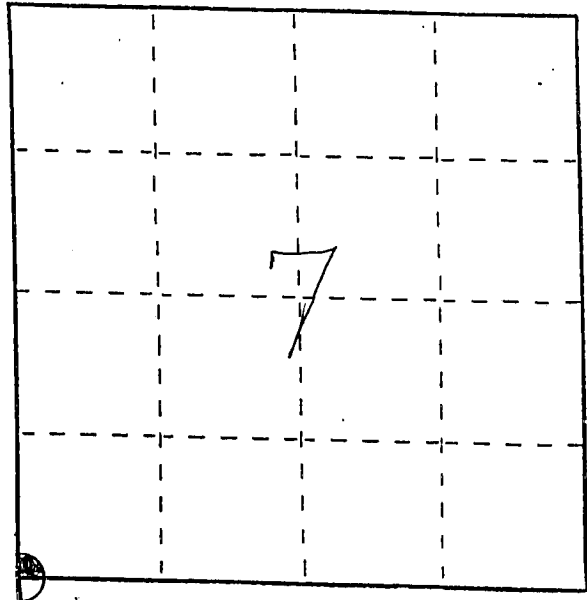
# U. S. PUBLIC LAND SURVEY MONUMENT RECORD

INSTRUCTIONS: This record shall show the location of the corner and shall include all of the following nine elements (a through i).

(a) Identify the corner by reference to the U.S. public land survey system.

⊕ = Corner monument restored.

SOUTHWEST CORNER OF SECTION 7,  
TOWN 6 NORTH, RANGE 2 WEST,  
FENNIMORE TOWNSHIP,  
GRANT COUNTY, WISC.

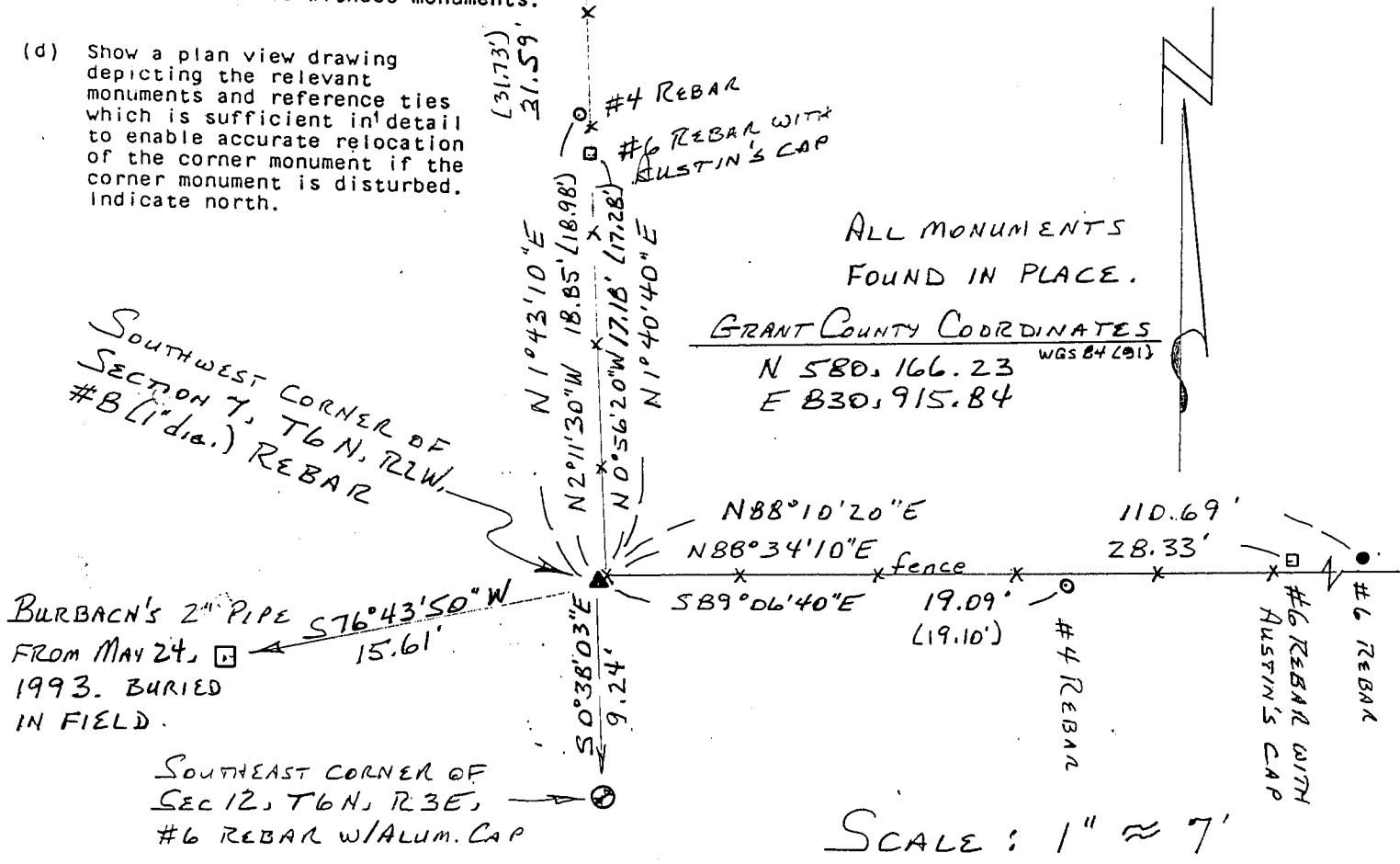


(b) Describe any record evidence, monument evidence, occupational evidence, testimonial evidence or any other material evidence you considered, and whether the monument was found or placed.

MONUMENT WAS SET BY ME IN MAY, 1988 AND SUBSEQUENTLY RE-TIED IN NOVEMBER, 1998. DAVID BURBACH SET THE 2" PIPE IN MAY, 1993, BY SPLITTING A LINE BETWEEN THE WEST 1/4 CORNER OF SEC 7 AND THE WEST 1/4 CORNER OF SEC 18. I USED TO RABBIT HUNT IN THIS AREA AS A BOY AND KNOW THIS FENCE TO BE IN THE SAME LOCATION FOR FORTY YEARS.

(c) In the plan view drawing below, provide reference ties to at least 4 witness monuments, or, if the location is within a municipality, to at least 2 witness monuments. (Witness monuments shall be made of concrete, natural stone, iron or other equally durable material. Describe witness monuments.)

(d) Show a plan view drawing depicting the relevant monuments and reference ties which is sufficient in detail to enable accurate relocation of the corner monument if the corner monument is disturbed. Indicate north.



(e) Describe any material discrepancy between the location of the corner as restored or reestablished and the location of that corner as previously restored or reestablished by distance and direction. Show the discrepancy on the plan view drawing under (d), above. Show the distances between the corner as previously restored or reestablished and (1) the corner as restored or reestablished, and (2) to at least 2 of the witness monuments shown on the drawing in (d), above.

THE ONLY DISCREPANCY IS BURBACH'S EXTRA CORNER.

(f) Was the corner restored through acceptance of (1) an obliterated evidence location, or, (2) a found perpetuated location?

(2) A FOUND PERPETUATED LOCATION.

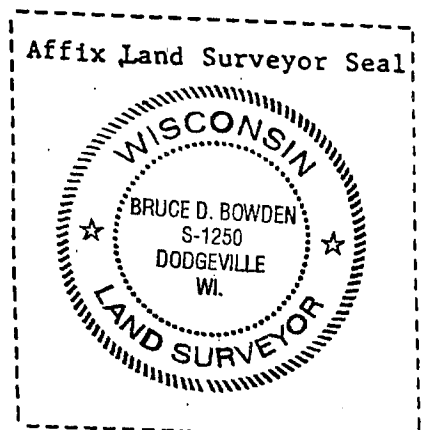
(g&h) Was the corner reestablished through lost corner proportionate methods? If so, show the method, including the directions and distances to other public land survey corners used as evidence or used for proportioning in determining the corner location?

No

(1) I, BRUCE D. BOWDEN  
(type or print name) certify that the corner location shown on this record was determined by me or under my direction and control and that this U.S. Public Land Survey Monument Record is correct and complete to the best of my knowledge and belief.

Signature

Date



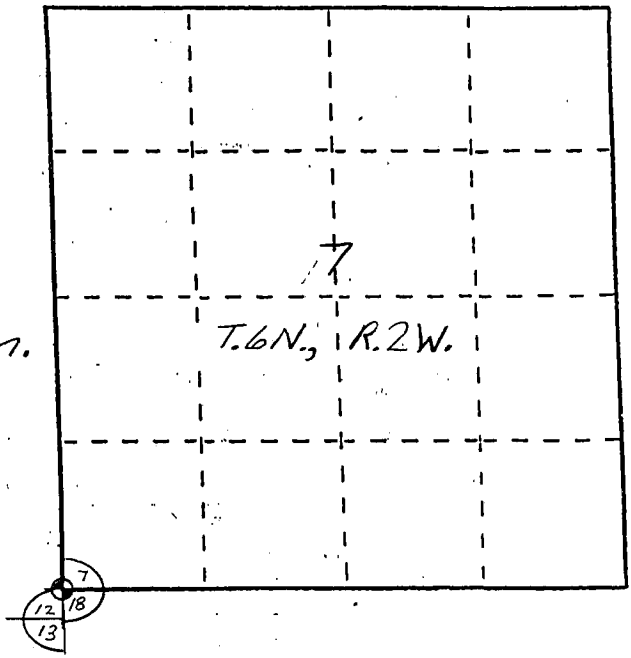
Bruce D. Bowden June 15, 2004

# U. S. PUBLIC LAND SURVEY MONUMENT RECORD

INSTRUCTIONS: This record shall show the location of the corner and shall include all of the following nine elements (a through i).

- (a) Identify the corner by reference to the U.S. public land survey system.
- = Corner monument restored.

The Southwest Corner of  
 Section 7, Town 6 North,  
 Range 2 West, Fennimore Town-  
 ship, Grant County, Wisconsin.

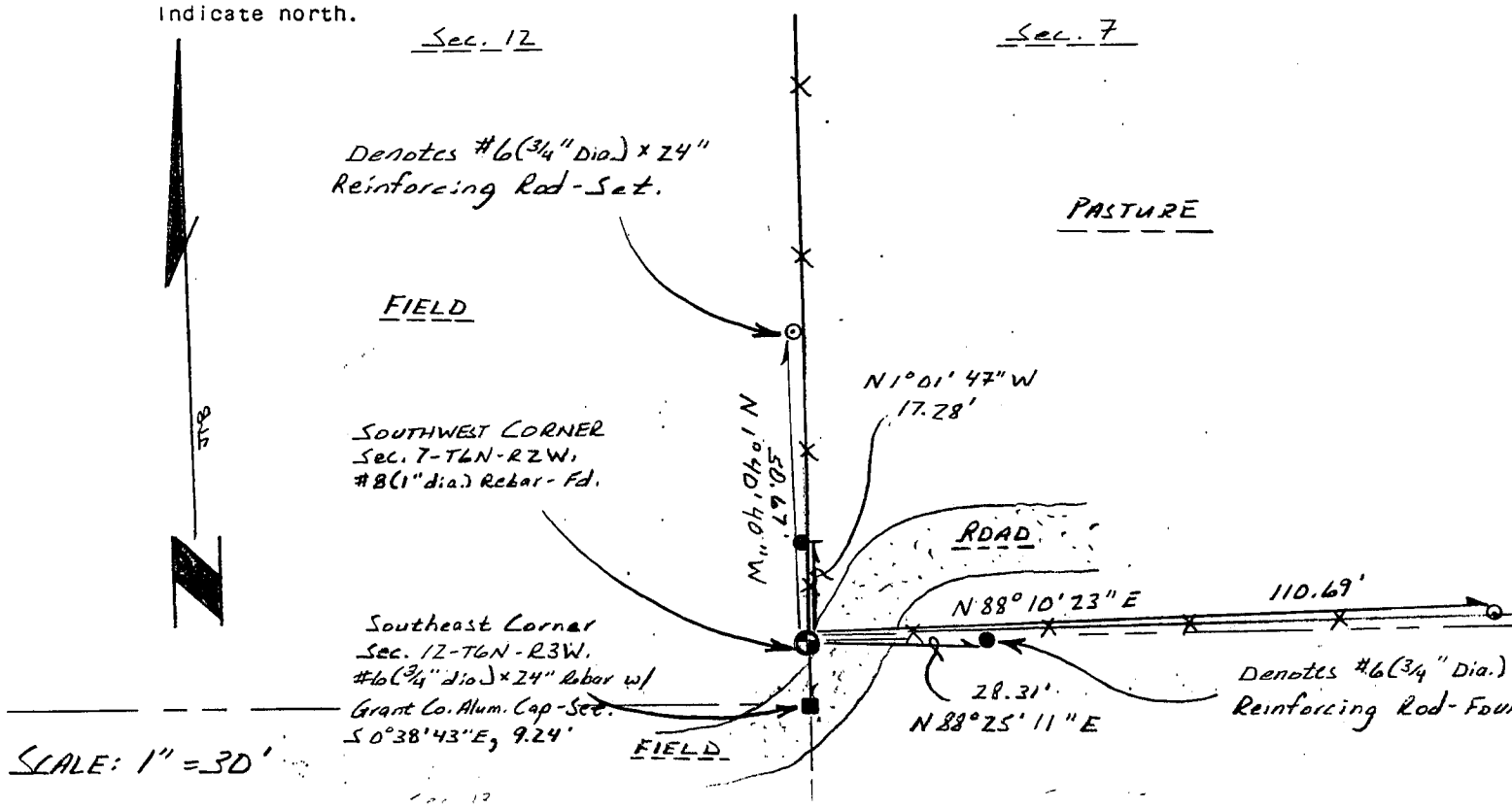


- (b) Describe any record evidence, monument evidence, occupational evidence, testimonial evidence or any other material evidence you considered, and whether the monument was found or placed.

A #8(1" dia.) reinforcing rod was found and accepted at this corner location and ties were set.

- (c) In the plan view drawing below, provide reference ties to at least 4 witness monuments, or, if the location is within a municipality, to at least 2 witness monuments. (Witness monuments shall be made of concrete, natural stone, iron or other equally durable material, ~~except~~ wood.) Describe witness monuments.

- (d) Show a plan view drawing depicting the relevant monuments and reference ties which is sufficient in detail to enable accurate relocation of the corner monument if the corner monument is disturbed. Indicate north.



(e) Describe any material discrepancy between the location of the corner as restored or reestablished and the location of that corner as previously restored or reestablished by distance and direction. Show the discrepancy on the plan view drawing under (d), above. Show the distances between the corner as previously restored or reestablished and (1) the corner as restored or reestablished, and (2) to at least 2 of the witness monuments shown on the drawing in (d), above.

*None.*

(f) Was the corner restored through acceptance of (1) an obliterated evidence location, or, (2) a found perpetuated location?

*2) a found perpetuated location.*

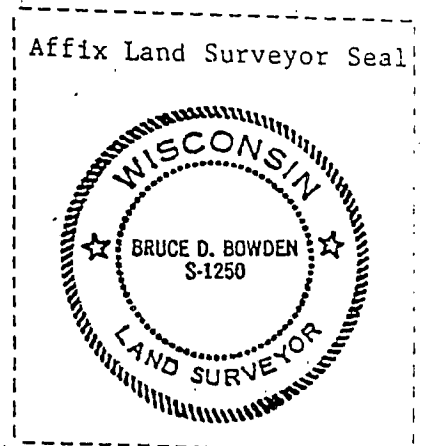
(g&h) Was the corner reestablished through lost corner proportionate methods? If so, show the method, including the directions and distances to other public land survey corners used as evidence or used for proportioning in determining the corner location?

*No.*

(i) I, BRUCE D. BOWDEN,  
(type or print name) certify that the corner location shown on this record was determined by me or under my direction and control and that this U.S. Public Land Survey Monument Record is correct and complete to the best of my knowledge and belief.

*Bruce D. Bowden*  
Signature

*Nov 19, 1998*  
Date



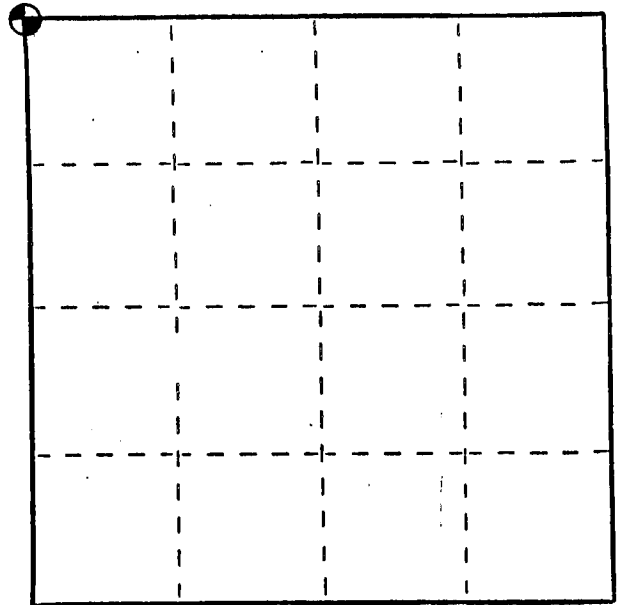
# U. S. PUBLIC LAND SURVEY MONUMENT RECORD

**INSTRUCTIONS:** This record shall show the location of the corner and shall include all of the following nine elements (a through i).

(a) Identify the corner by reference to the U.S. public land survey system.

⊕ = Corner monument restored.

Northwest corner of Section 18,  
town 6 North, Range 2 West,  
Fennimore Township, Grant  
County, Wisconsin.



(b) Describe any record evidence, monument evidence, occupational evidence, testimonial evidence or any other material evidence you considered, and whether the monument was found or placed.

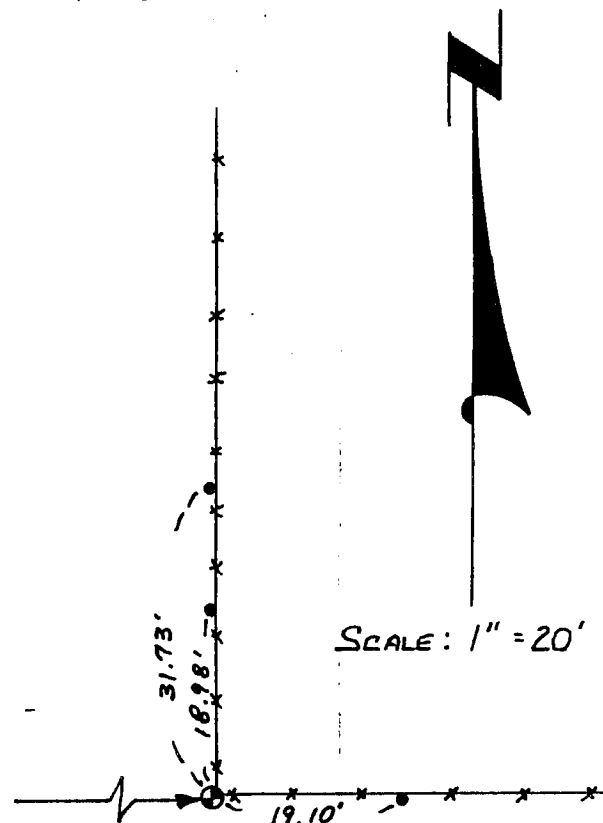
Monument set from existing physical evidence after verification by proportionate measurements from an EDM traverse of the area.

(c) In the plan view drawing below, provide reference ties to at least 4 witness monuments, or, if the location is within a municipality, to at least 2 witness monuments. (Witness monuments shall be made of concrete, natural stone, iron or other equally durable material, ~~except~~ wood.) Describe witness monuments.

(d) Show a plan view drawing depicting the relevant monuments and reference ties which is sufficient in detail to enable accurate relocation of the corner monument if the corner monument is disturbed. Indicate north.

LEGEND

- ⊕ 1" x 24" Reinforcing Rod
- 1/2" x 24" Reinforcing Rod
- \*\*\* Fence



ABANDONED  
TOWN ROAD

446.74'

(e) Describe any material discrepancy between the location of the corner as restored or reestablished and the location of that corner as previously restored or reestablished by distance and direction. Show the discrepancy on the plan view drawing under (d), above. Show the distances between the corner as previously restored or reestablished and (1) the corner as restored or reestablished, and (2) to at least 2 of the witness monuments shown on the drawing in (d), above.

None

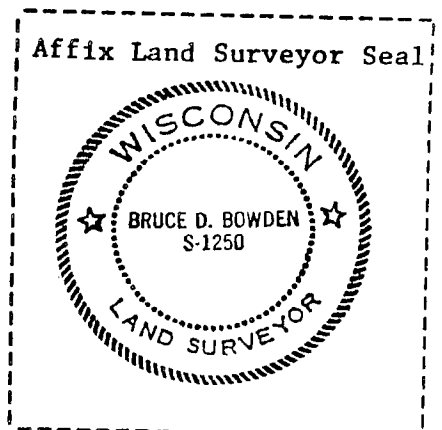
(f) Was the corner restored through acceptance of (1) an obliterated evidence location, or, (2) a found perpetuated location?

(1) An obliterated evidence location

(g&h) Was the corner reestablished through lost corner proportionate methods? If so, show the method, including the directions and distances to other public land survey corners used as evidence or used for proportioning in determining the corner location?

No.

(i) I, Bruce D. Bowden, R.L.S. - 1250  
(type or print name) certify that the corner location shown on this record was determined by me or under my direction and control and that this U.S. Public Land Survey Monument Record is correct and complete to the best of my knowledge and belief.



Signature

*Bruce D Bowden*

*May 8, 1988*  
Date