

U.S. PUBLIC LAND SURVEY MONUMENT RECORD - GRANT COUNTY, WI

Section 17, Town 6 North Range 2 West, Town of Fennimore (a)

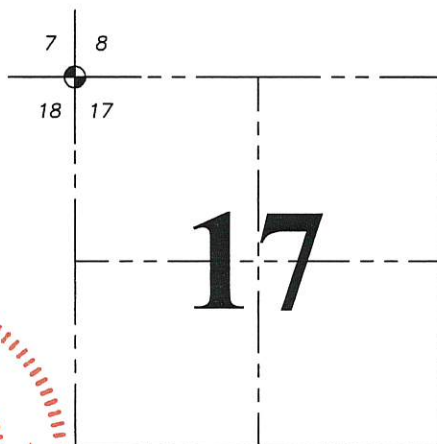
NOTE: This form is intended and designed to fulfill all requirements of the Wisconsin Administrative Code Chapter A-E 7.08, U.S. Public Land Survey Monument Record (3) (a) (b) (c) (d) (e) (f) (g) (h) (i).

CERTIFICATE: (i)

I, Aaron J. Austin, Wisconsin Professional Land Surveyor, do hereby certify that the corner location on this record was determined by me and/or under my direct supervision and that this U.S. Public Land Survey Monument Record is correct and complete to the best of my knowledge and belief.

Dated this 13th day of June, 2016.

Aaron J. Austin
Aaron J. Austin, S-2922



● = CORNER LOCATION

HISTORY OF CORNER ESTABLISHMENT:

The corner was originally set by Henry Parke in 1832.
Thomas Buck reset the corner and prepared a Survey Monument Record dated 2/5/98.

DESCRIPTION OF CORNER EVIDENCE FOUND:

I found the corner and one witness monument set by Buck. I set three additional witness corners after I verified the it's location using GPS and EDM methods

DESCRIPTION OF CORNER AND WITNESS MONUMENTS, references and accessories used to perpetuate the original or re-established location of this corner. Witnesses to corner location Shane Austin. Drawn by Owen Austin.

SKETCH: LEGEND

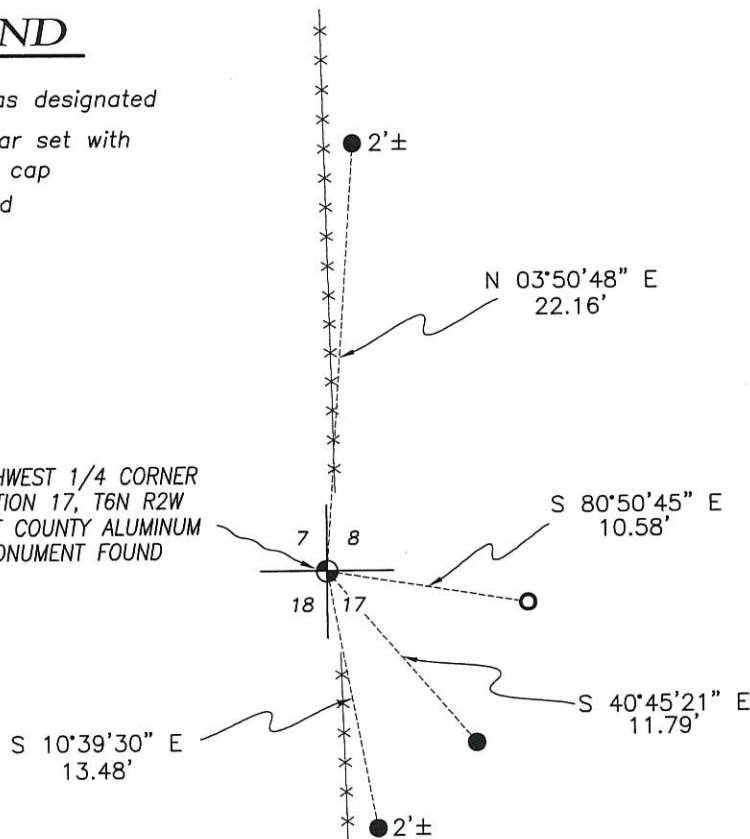
- Section Corner—as designated
- 1/2" x 12" Rebar set with red plastic "TIE" cap
- 5/8" Rebar found
- x-x-x- Existing fence

FIELD

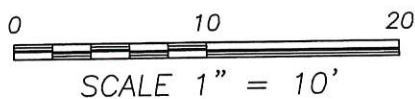


NORTHWEST 1/4 CORNER
SECTION 17, T6N R2W
GRANT COUNTY ALUMINUM
MONUMENT FOUND

PASTURE



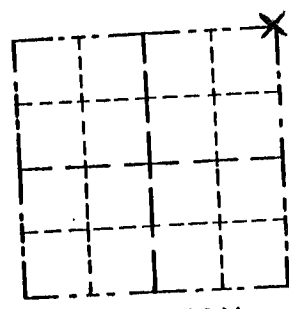
FIELD



Survey Monument Record

CORNER NO. 51
SECTION 18
TOWN 6N
RANGE 2W

TYPE OF MONUMENT 3/4" x 24" iron rod
STATE PLANE COORDINATES: N _____
E _____
ELEVATION — M.S.L. DATUM: _____
THETA ANGLE: _____
FIELD BOOK: _____
PAGE _____



BASIS FOR MONUMENT LOCATION

(Use reverse side if necessary)

Show info such as: History of corner, with reference to Vol. and pg., dates, surveyor; exact description of monument replaced; if location computed, by taped or EDM traverse; landowner, remarks, etc.

SEAL:

Set monument by accepting existing physical evidence and checked it with double proportionate measurement after an EDM survey of the section.

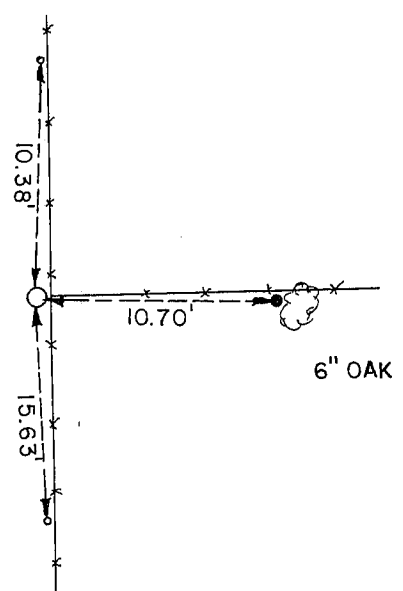
CERTIFIED CORRECT

Thomas Buck
Registered Land Surveyor

DATE: 2/5/98

TIE SKETCH

Show at least three (3) ties and monument



- o = PK NAIL IN WOOD POST
- = 5/8" X 18" IRON ROD
- = 3/4" X 24" IRON ROD
- * * = EXISTING FENCE