

U.S. PUBLIC LAND SURVEY MONUMENT RECORD - GRANT COUNTY, WI

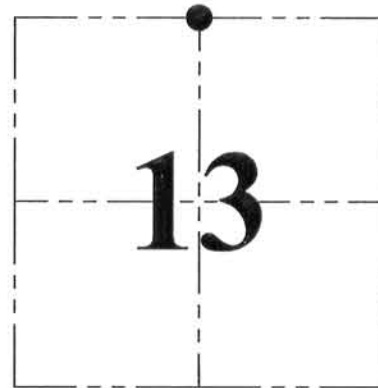
Section 13, Town 6 North Range 2 West, Town of Fennimore

CERTIFICATE:

I, Aaron J. Austin, do hereby certify that the corner location on this record was determined by me and/or under my direct supervision and that this U.S. Public Land Survey Monument Record is correct and complete to the best of my knowledge and belief.

Dated this 17th day of July, 2013.

Aaron J. Austin
 Aaron J. Austin, S-2922



● = CORNER LOCATION

HISTORY OF CORNER ESTABLISHMENT:

1832 Harvey Parke set the original corner.
 1996 Sean Walsh set a 3/4" rebar.

DESCRIPTION OF CORNER EVIDENCE FOUND:

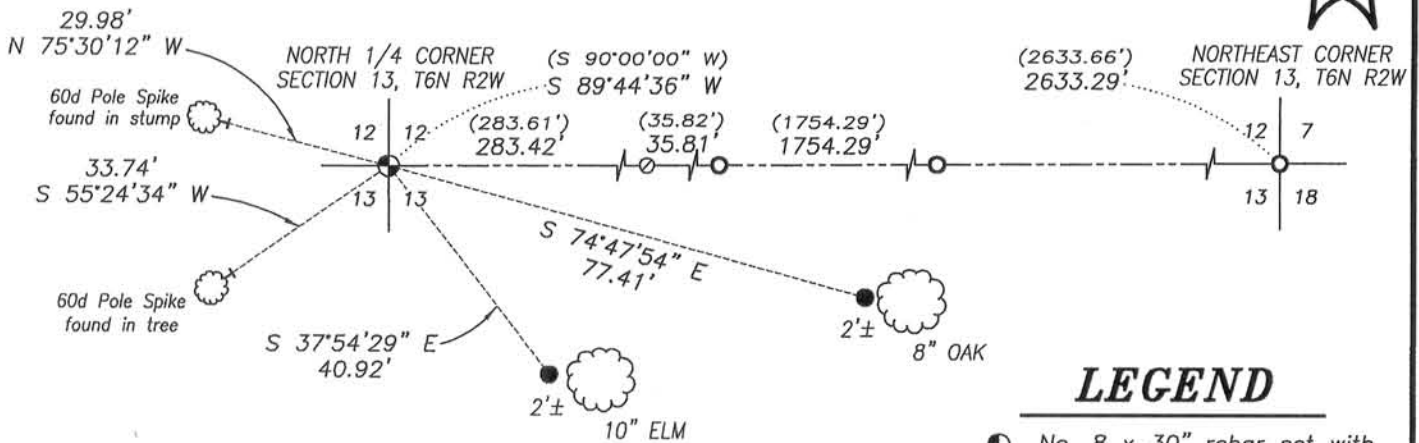
The 3/4" rebar set by Walsh could not be recovered. It appears that recent logging activity has destroyed the monument. I reset the corner based upon 2 found ties from Walsh's Grant County Survey Monument Record. This location also fit well with monuments found from Walsh survey filed in Book W, Page 65. The remaining ties could not be located and I established 2 new ties. I verified this location by G.P.S. and E.D.M. methods.

DESCRIPTION OF CORNER AND WITNESS MONUMENTS, references and accessories used to perpetuate the original or re-established location of this corner. Witnesses to corner location Shane Austin.

SKETCH:

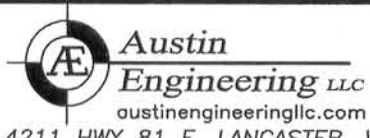


The North line of the NE 1/4 of Section 13 bears S 89°44'36" W according to the Grant County Coordinate System (2011 adjustment) which was determined by G.P.S. observation.



LEGEND

- No. 8 x 30" rebar set with Grant County Aluminum Cap
- No. 4 x 12" rebar set with red plastic "TIE" cap
- No. 6 rebar found
- Nail found
- () Recorded as
- x-x-x- Approximate fence



JOB NO: 13s087
 G:\HMP\T6NR2W\13
 H:\TIE\T6NR2W\42

FIELDBOOK: TDSR
 DRAWN BY: AJ AUSTIN
 CREW: SW AUSTIN

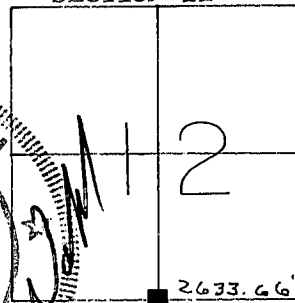
FEB 12 1995

GRANT COUNTY

SURVEY MONUMENT RECORD

TYPE OF MONUMENT: 3/4" X 24" IRON ROD PLACED
TIES ARE AS INDICATED ON SKETCH
 Tree ties are 60d pole spikes set in blazes.

SECTION 12

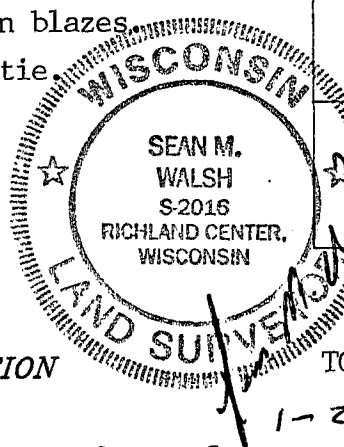


CORNER LOCATION
 T 6 N, R 2 W
 TOWN OF FENNIMORE

● - 3/4" X 24" Iron Rod set as tie

WITNESSES TO CORNER LOCATION

Sean M. Walsh
 Christopher G. Reedy
 Thomas M. Dobbs



BASIS FOR MONUMENT LOCATION

1-29-96

After an extensive search of the grant County Survey records, I was not able to find any reference to this corner subsequent to the Original Gov't. Survey.

During a field search of the area I located the remains of an old corner post. Upon running the South line of Section 12, I determined the remnants to be within $\pm 1'$ of an even split of the South line, Thus I re-established the corner at a position which is half way along the South line of Section 12.

This information is correct and true to the best of my information, knowledge and belief.

Ties are 60 penny ring-shank common spikes set in blaze at base of tree as indicated on sketch. (unless otherwise noted)

