

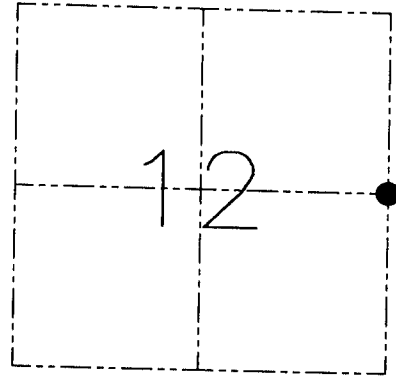
**U.S. PUBLIC LAND SURVEY MONUMENT RECORD - GRANT COUNTY, WI**  
 Section 12, Town 6 North Range 2 West, Town of Fennimore

**CERTIFICATE**

I, Larry L. Austin, do hereby certify that the corner location on this record was determined by me and/or under my direct supervision and that this U.S. public land survey monument record is correct and complete to the best of my knowledge and belief.

Dated this 25th day of February, 2007

*Larry L. Austin*  
 Larry L. Austin S-1903



● = CORNER LOCATION

**HISTORY OF CORNER ESTABLISHMENT**

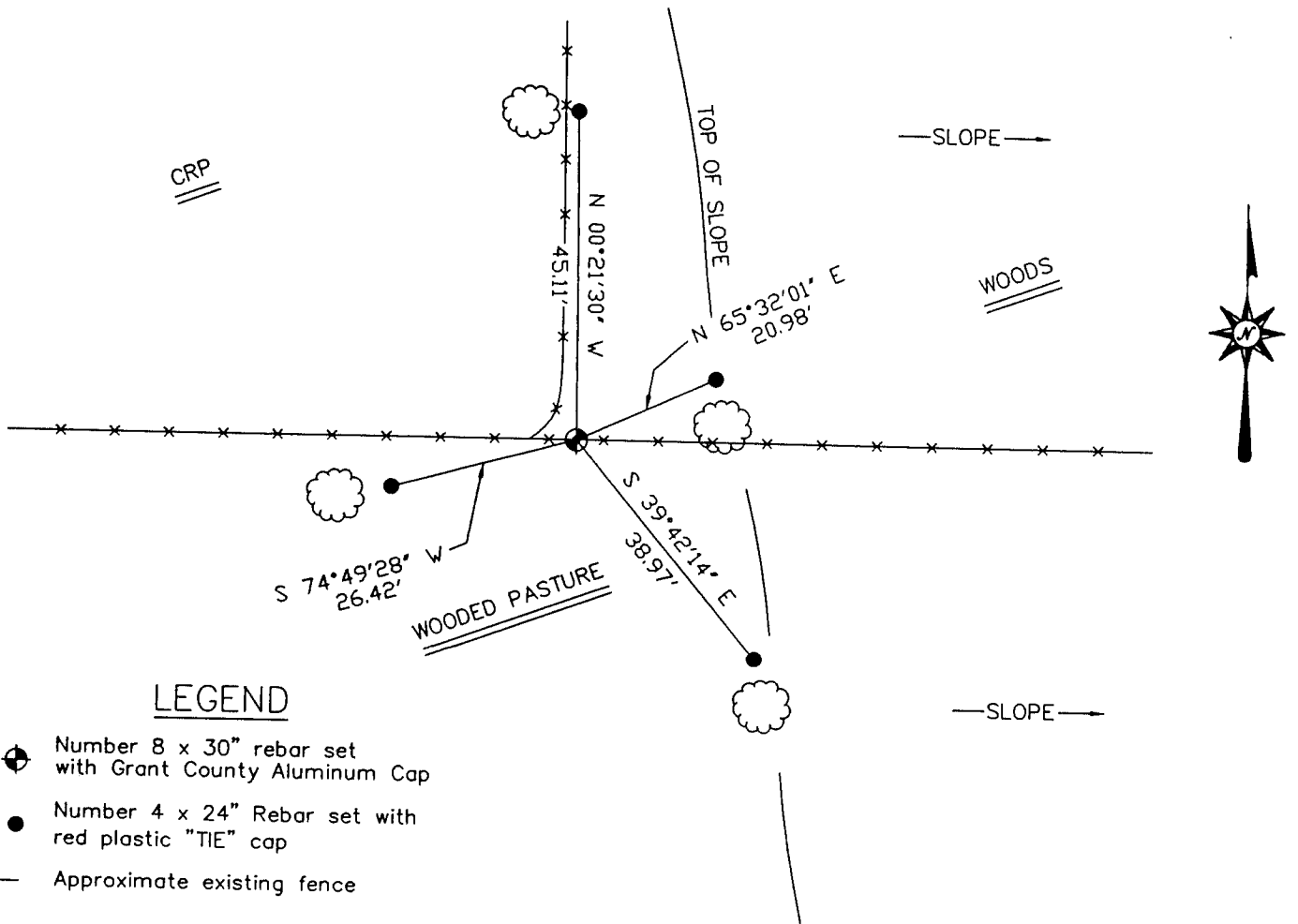
Corner was originally set in 1833 by Harvey Parke.  
 Geo Mcfall tied to the corner in 1874.

**DESCRIPTION OF CORNER EVIDENCE FOUND**

I reset the corner based on occupational evidence. This location fit proportionately to adjoining corners. Verified this location with EDM & GPS methods.

**DESCRIPTION OF CORNER AND WITNESS MONUMENTS, references and accessories used to perpetuate the original or re-established location of this corner. Witnesses to the corner location Brad Digman & Shane Austin.**

**SKETCH:**



**LEGEND**

- Number 8 x 30" rebar set with Grant County Aluminum Cap
- Number 4 x 24" Rebar set with red plastic "TIE" cap
- x— Approximate existing fence

SKETCH NOT TO SCALE

**AUSTIN ENGINEERING, LLC**

4211 HWY 81 EAST, LANCASTER, WI 53813  
 PHONE 608-723-6363 FAX 608-723-6702

FIELDBOOK: 21-44  
 G: \T7NR2W\35  
 C: \CTA\TIE\T6NR2W\40  
 CREW: BS-SB-SA-DM-KW

DRAWN BY: CT AUSTIN  
 APPROVED: LL AUSTIN

CORNER NUMBER 40