

US. PUBL. LAND SURVEY MONUMENT RECORD

CORNER DESCRIPTION: W 1/4 CORNER, SECTION 12, T 6 N, R 2 W

STATE PLANE COORDINATES: N _____, E _____

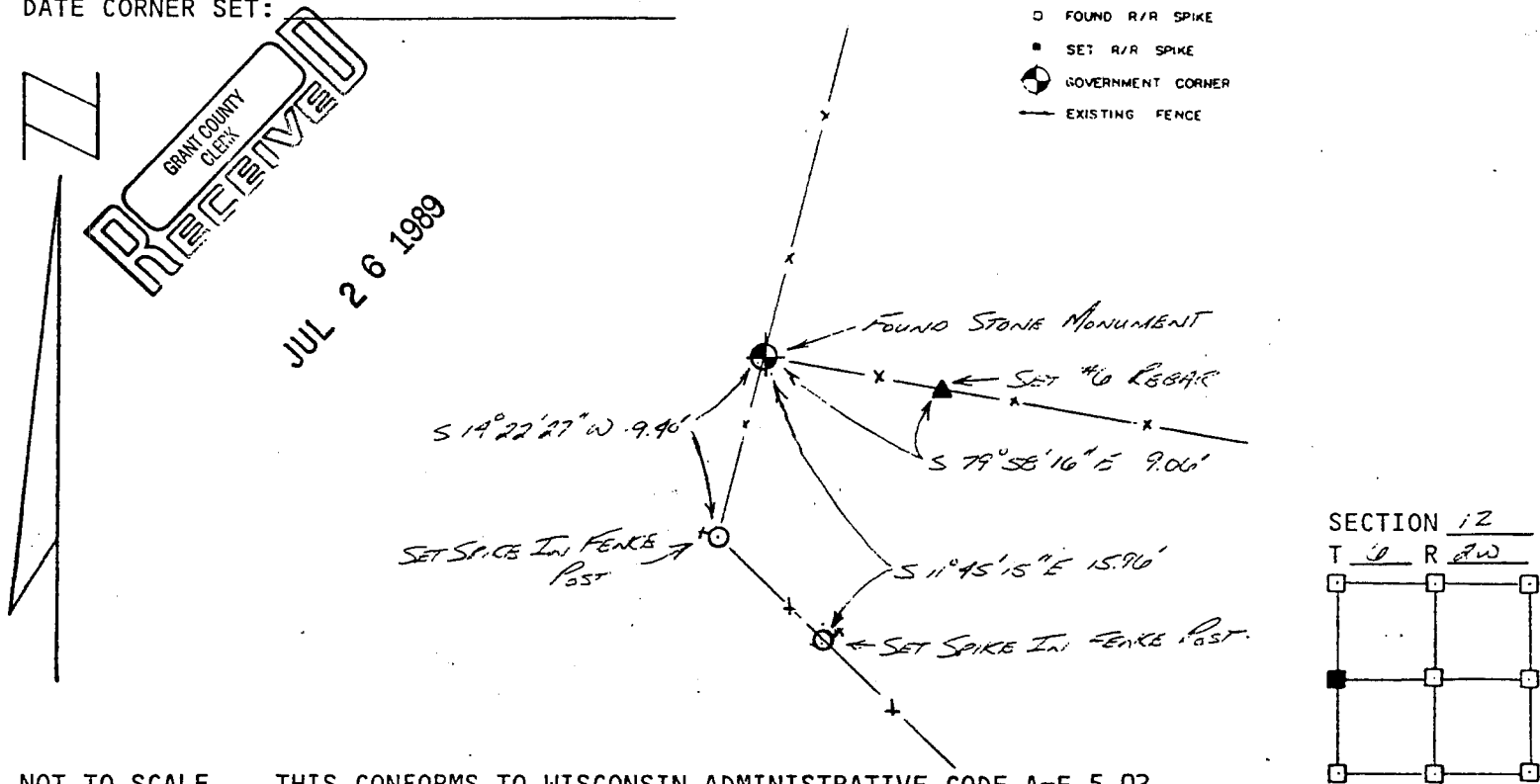
THETA ANGLE: _____

HORIZONTAL DATUM: WISCONSIN STATE PLANE COORDINATE SYSTEM, SOUTH ZONE

EVIDENCE: FOUND STONE MONUMENT

MONUMENT: FOUND , PLACED
 METHOD OF RESTORATION (RE-ESTABLISHMENT):
 ACCEPTED EXISTING MONUMENT
 ACCEPTED OCCUPATION
 LOST CORNER PROPORTIONATE METHODS
 DATE CORNER SET: _____

- LEGEND**
- ▲ SET #6 REBAR, 113 LBS PER LINEAL FT MIN WT
 - SET 1" X 24" IRON PIPE, 113 LBS PER LINEAL FT MIN WT
 - SET 2" X 30" IRON PIPE, 365 LBS PER LINEAL FT MIN WT
 - FOUND 1" IRON PIPE
 - FOUND 2" IRON PIPE
 - FOUND R/R SPIKE
 - SET R/R SPIKE
 - GOVERNMENT CORNER
 - EXISTING FENCE



NOT TO SCALE THIS CONFORMS TO WISCONSIN ADMINISTRATIVE CODE A-E 5.02

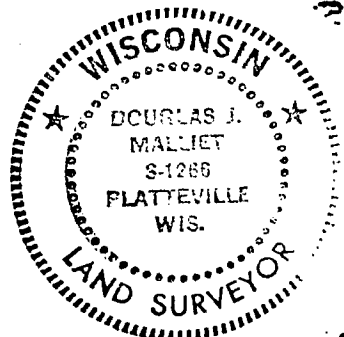
SURVEYOR'S AFFIDAVIT:

STATE OF WISCONSIN)
Grant COUNTY) SS

I hereby certify that I, Douglas J. Malliet, have complied with the Wisconsin State Statutes, Statutes of the United States, and the rules and regulations made by the Secretary of the Interior in the location of the corner shown above.

DATE OF SURVEY: JULY 10, 1989

Douglas J. Malliet
 REGISTERED LAND SURVEYOR
 # 1261e



D. F. BURBACH MUNICIPAL & CIVIL ENGINEERS

410 NORTH SECOND STREET • PLATTEVILLE, WISCONSIN 53818 • (608) 242-2200