

62035

U.S. PUBLIC LAND SURVEY MONUMENT RECORD - GRANT COUNTY, WI

Section 8, Town 6 North Range 2 West, Town of Fennimore (a)

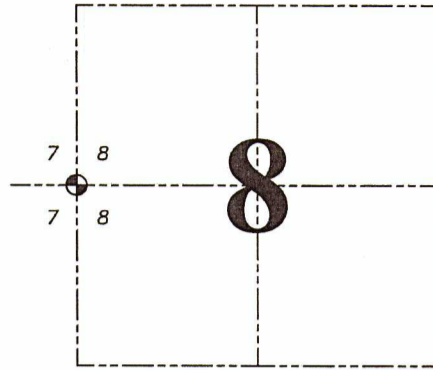
NOTE: This form is intended and designed to fulfill all requirements of the Wisconsin Administrative Code Chapter A-E 7.08, U.S. Public Land Survey Monument Record (3) (a) (b) (c) (d) (e) (f) (g) (h) (i).

CERTIFICATE: (i)

I, Aaron J. Austin, Wisconsin Professional Land Surveyor, do hereby certify that the corner location on this record was determined by me and/or under my direct supervision and that this U.S. Public Land Survey Monument Record is correct and complete to the best of my knowledge and belief.

Dated this 12th day of November, 2020.

Aaron J. Austin
Aaron J. Austin, S-2922



⊕ = CORNER LOCATION

Grant County Coordinates:
NAD 83 (2011)
Northing: 582,802.36
Easting: 836,239.81

HISTORY OF CORNER ESTABLISHMENT:

Original corner was set in 1833 by Harvey Parke.
Bruce Bowden set a 7/8" Rebar on a Survey dated 7/23/1983 Filed in Book I, Page 49.
Bruce Bowden prepared a Survey Monument Record dated 8/3/1983. This tie sheet stated that a 1 1/2" Iron Pipe was set.
All Subsequent Surveys show a 7/8" Rebar at the Corner location

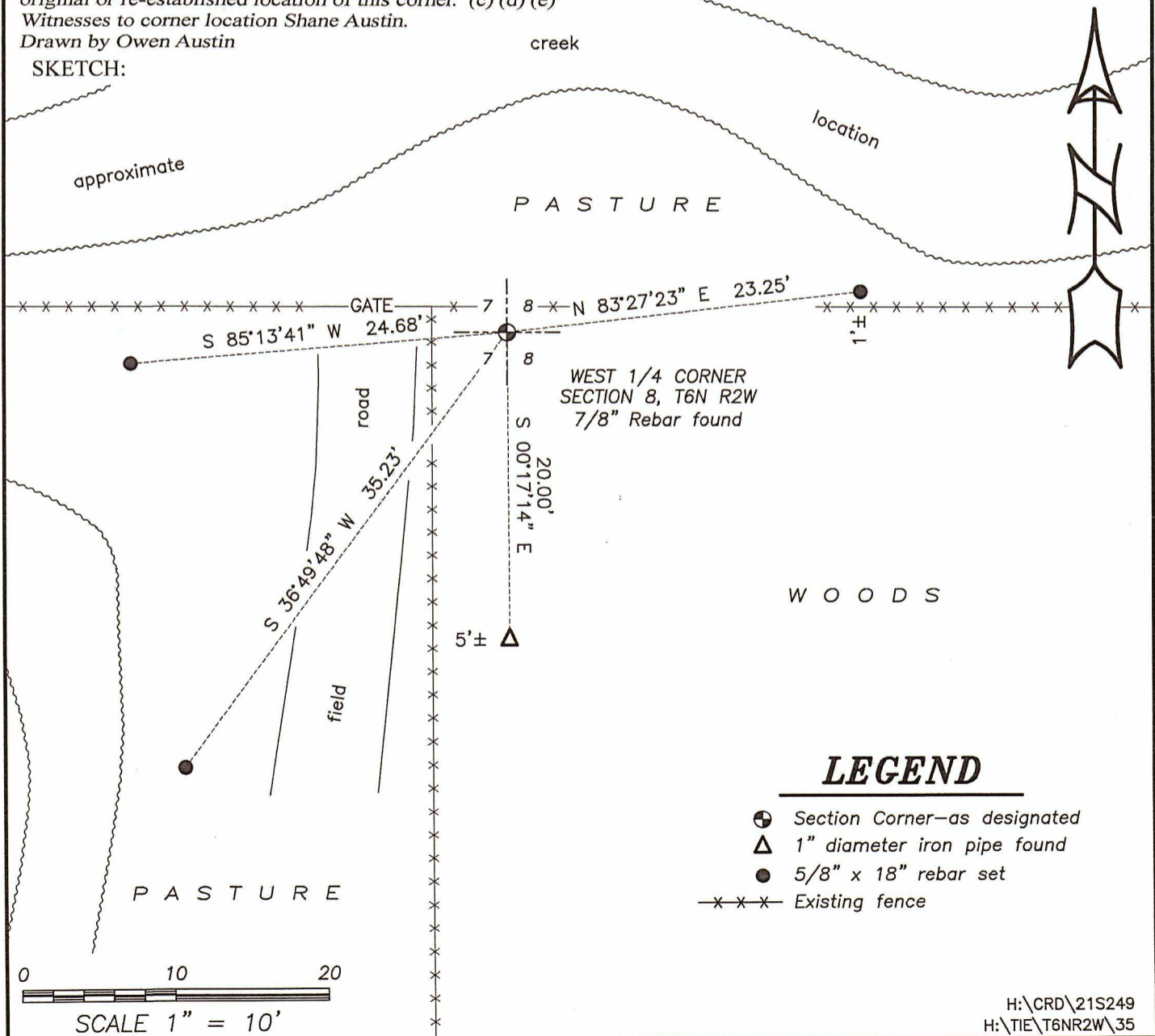
DESCRIPTION OF CORNER EVIDENCE FOUND: (b) (f) (g) (h)

I found a 7/8" Rebar and one existing witness corner. I set three additional witness corners after I verified the Monument's location with G.P.S. and E.D.M. methods.

DESCRIPTION OF CORNER AND WITNESS MONUMENTS, references and accessories used to perpetuate the original or re-established location of this corner. (c) (d) (e)

Witnesses to corner location Shane Austin.
Drawn by Owen Austin

SKETCH:



LEGEND

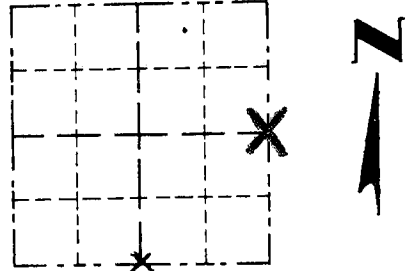
- ⊕ Section Corner—as designated
- △ 1" diameter iron pipe found
- 5/8" x 18" rebar set
- x-x-x- Existing fence

GRANT COUNTY

Survey Monument Record

TYPE OF MONUMENT 1½" x 24" pipe
STATE PLANE COORDINATES: N _____
E _____
ELEVATION — M.S.L. DATUM: _____
THETA ANGLE: _____
FIELD BOOK: _____
PAGE _____

CORNER NO. 35
SECTION 7
TOWN 67 N BRB
RANGE 2 W



LOCATION
(Indicated by "X")

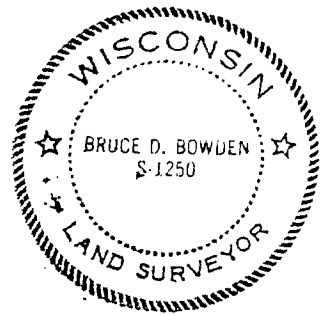
BASIS FOR MONUMENT LOCATION

(Use reverse side if necessary)

Show info such as: History of corner, with reference to Vol. and pg., dates, surveyor; exact description of monument replaced; if location computed, by taped or EDM traverse; landowner, remarks, etc.

Monument set from existing physical evidence and checked with single proportionate measurement.

SEAL:



CERTIFIED CORRECT

Bruce D. Bowden
Registered Land Surveyor

DATE: August 3, 1983

TIE SKETCH

Show at least three (3) ties and monument

