

U.S. PUBLIC LAND SURVEY MONUMENT RECORD - GRANT COUNTY, WI

Section 7, Town 6 North Range 2 West, Town of Fennimore (a)

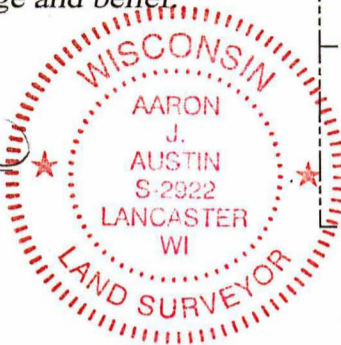
NOTE: This form is intended and designed to fulfill all requirements of the Wisconsin Administrative Code Chapter A-E 7.08, U.S. Public Land Survey Monument Record (3) (a) (b) (c) (d) (e) (f) (g) (h) (i).

CERTIFICATE: (i)

I, Aaron J. Austin, Wisconsin Professional Land Surveyor, do hereby certify that the corner location on this record was determined by me and/or under my direct supervision and that this U.S. Public Land Survey Monument Record is correct and complete to the best of my knowledge and belief.

Dated this 3rd day of August, 2020.

Aaron J. Austin
 Aaron J. Austin, S-2922



⊕ = CORNER LOCATION

Grant County Coordinates:
 NAD 83 (2011)
 Northing: 585,455.05
 Easting: 833,562.60

HISTORY OF CORNER ESTABLISHMENT:

Original corner was set in 1833 by Henry Parke.
 Bruce Bowden found a 7/8" Iron Rod and prepared a Survey Monument Record dated 8/3/1983.
 Bruce Bowden found a 1" Axle Shaft and prepared a Survey Monument Record dated 7/14/1992.

DESCRIPTION OF CORNER EVIDENCE FOUND: (b) (f) (g) (h)

I found the 1" Axle Shaft Bruce found. I set four witness corners after I verified the Monument's location with G.P.S. and E.D.M. methods.

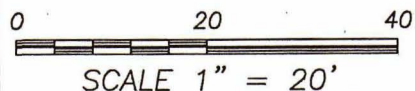
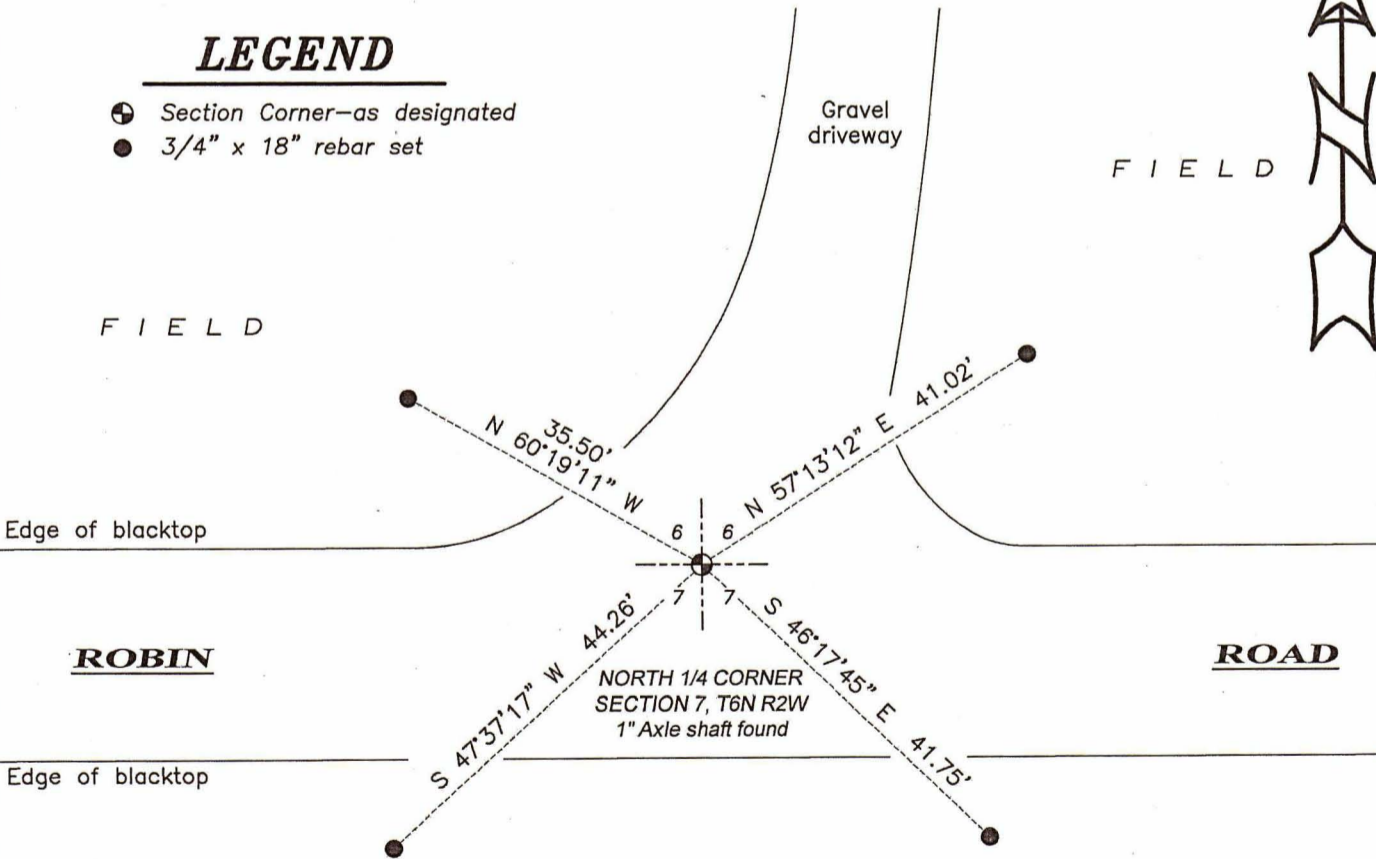
DESCRIPTION OF CORNER AND WITNESS MONUMENTS, references and accessories used to perpetuate the original or re-established location of this corner. (c) (d) (e)

Witnesses to corner location Shane Austin.
 Drawn by Owen Austin

SKETCH:

LEGEND

- ⊕ Section Corner—as designated
- 3/4" x 18" rebar set



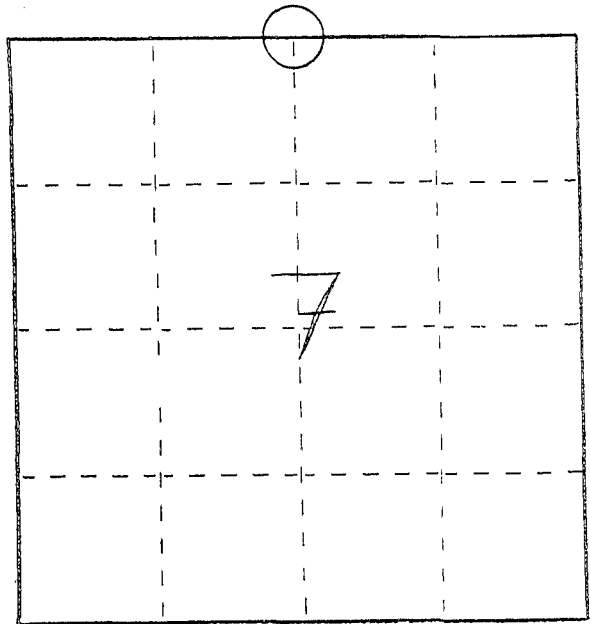
BOBBY

U. S. PUBLIC LAND SURVEY MONUMENT RECORD

INSTRUCTIONS: This record shall show the location of the corner and shall include all of the following nine elements (a through i).

- (a) Identify the corner by reference to the U.S. public land survey system.
- = Corner monument restored.

NORTH 1/4 CORNER
 SECTION 7
 TOWN 6 NORTH
 RANGE 2 WEST
 FENNIMORE TOWNSHIP
 GRANT CO., WIS.



- (b) Describe any record evidence, monument evidence, occupational evidence, testimonial evidence or any other material evidence you considered, and whether the monument was found or placed.

FOUND AND ACCEPTED 1" AXLE, AS SET FOR A PREVIOUS SURVEY.

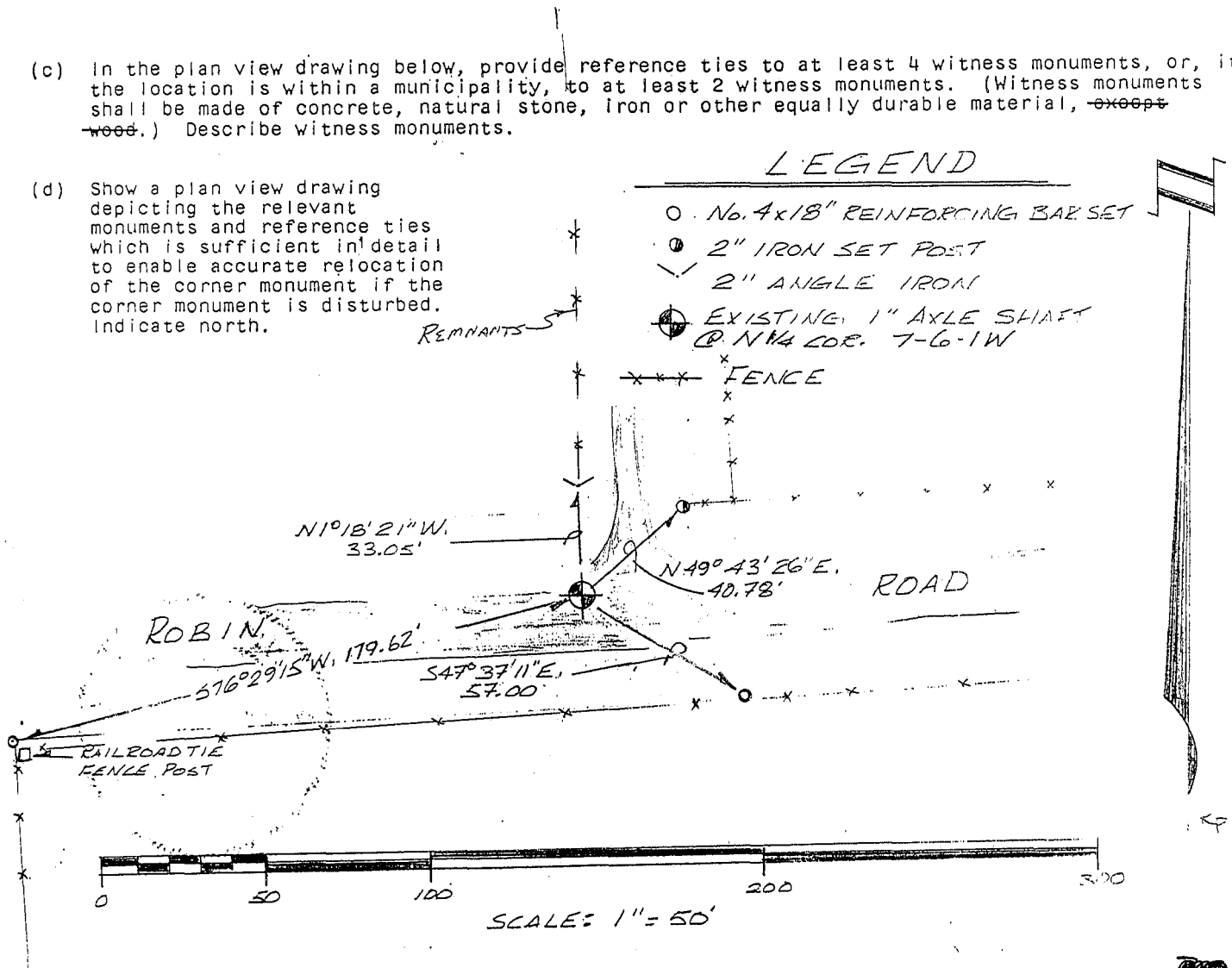
JUL 21 1992

- (c) In the plan view drawing below, provide reference ties to at least 4 witness monuments, or, if the location is within a municipality, to at least 2 witness monuments. (Witness monuments shall be made of concrete, natural stone, iron or other equally durable material, ~~except~~ wood.) Describe witness monuments.

- (d) Show a plan view drawing depicting the relevant monuments and reference ties which is sufficient in detail to enable accurate relocation of the corner monument if the corner monument is disturbed. Indicate north.

LEGEND

- No. 4x18" REINFORCING BAR SET
- 2" IRON SET POST
- ∨ 2" ANGLE IRON
- ⊕ EXISTING 1" AXLE SHAFT @ N1/4 COR. 7-6-1W



(e) Describe any material discrepancy between the location of the corner as restored or reestablished and the location of that corner as previously restored or reestablished by distance and direction. Show the discrepancy on the plan view drawing under (d), above. Show the distances between the corner as previously restored or reestablished and (1) the corner as restored or reestablished, and (2) to at least 2 of the witness monuments shown on the drawing in (d), above.

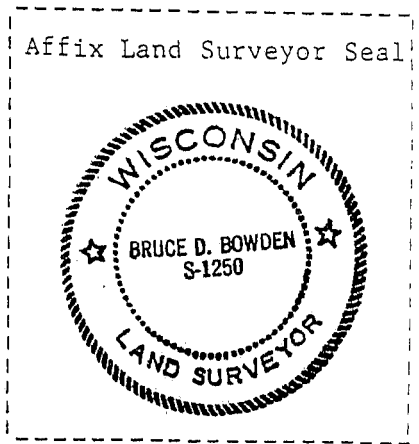
NONE

(f) Was the corner restored through acceptance of (1) an obliterated evidence location, or, (2) a found perpetuated location?

(2) A FOUND PERPETUATED LOCATION

(g&h) Was the corner reestablished through lost corner proportionate methods? If so, show the method, including the directions and distances to other public land survey corners used as evidence or used for proportioning in determining the corner location?

No.



(i) I, BRUCE D. BOWDEN
(type or print name) certify that the corner location shown on this record was determined by me or under my direction and control and that this U.S. Public Land Survey Monument Record is correct and complete to the best of my knowledge and belief.

Bruce D. Bowden July 14, 1992
Signature Date