

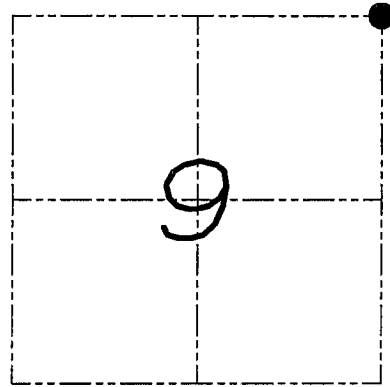
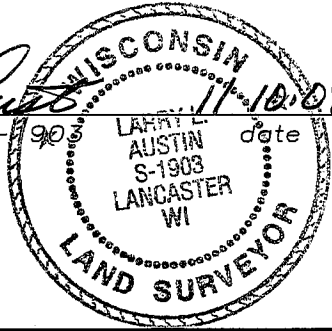
# U.S. PUBLIC LAND SURVEY MONUMENT RECORD

Section 9, Town 6 North Range 2 West, Town of Fennimore, Grant County, Wisconsin

## CERTIFICATE

I, Larry L. Austin, do hereby certify that the corner location on this record was determined by me and/or under my direct supervision and that this U.S. public land survey monument record is correct and complete to the best of my knowledge and belief.

*Larry L. Austin*  
 Larry L. Austin, S-1903 date 11-10-08



● = CORNER LOCATION

## HISTORY OF CORNER

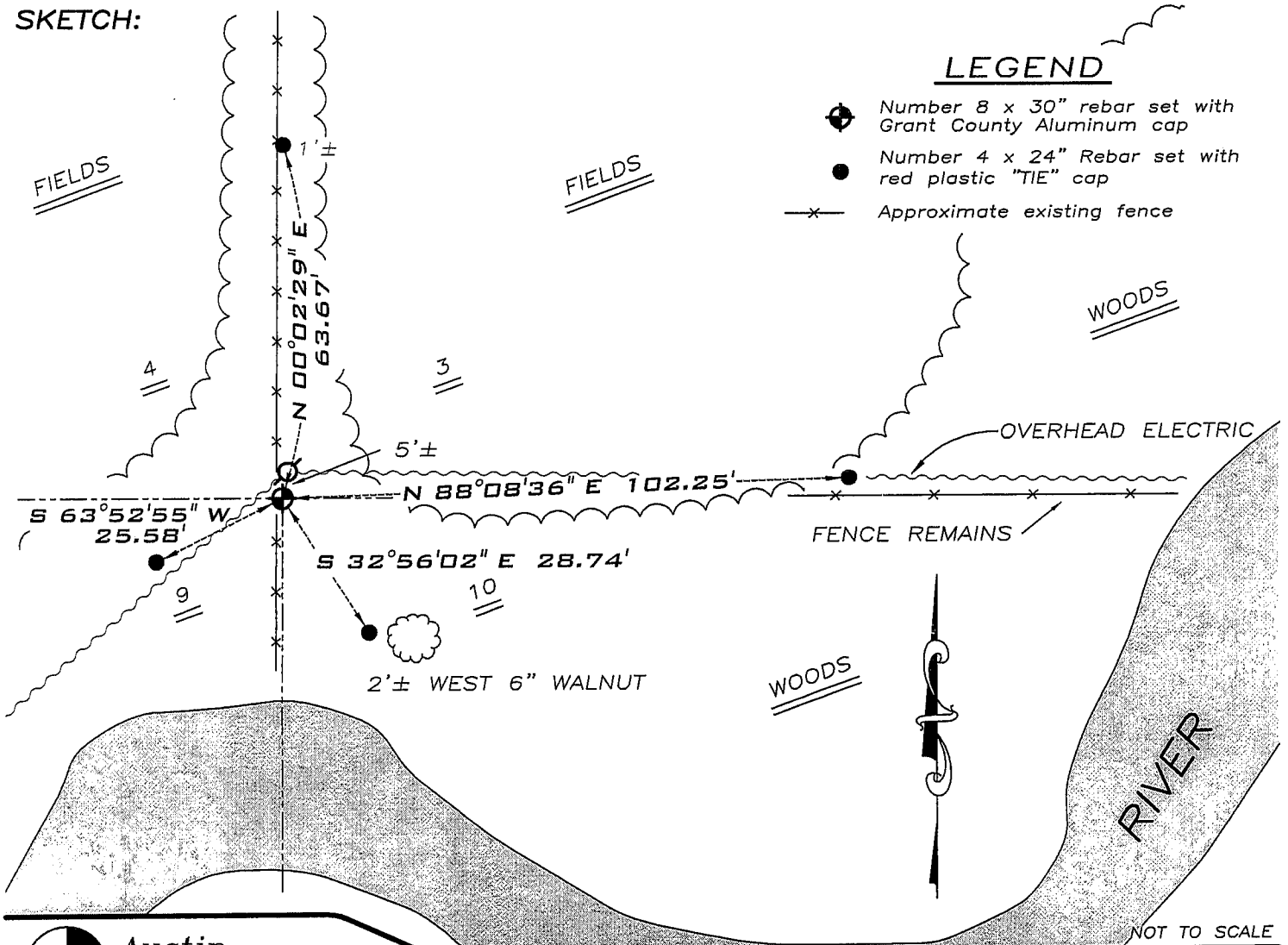
Corner was originally set in 1833 by Parke. No recent record of the corner was found.

## CORNER EVIDENCE FOUND

I reset the corner at an occupied location. I verified this location using EDM & GPS methods.

DESCRIPTION OF CORNER AND WITNESS MONUMENTS, references and accessories used to perpetuate the original or re-established location of this corner. Witnesses to monument location Bobby Sedgwick & Brad Digman & Shane Austin

## SKETCH:



## LEGEND

- Number 8 x 30" rebar set with Grant County Aluminum cap
- Number 4 x 24" Rebar set with red plastic "TIE" cap
- x— Approximate existing fence

**Austin Engineering LLC**

4211 HWY 81 E, LANCASTER, WI 53813  
 PHONE 608-723-6363 FAX 608-723-6702

JOB NUMBER 08S194-PORTER  
 FIELDBOOK: TDSR, 2812  
 G:\T7NR2W\35  
 H:\TIE\T6NR2W\27

DRAWN BY: SW AUSTIN  
 APPROVED: LL AUSTIN