

U.S. PUBLIC LAND SURVEY MONUMENT RECORD - GRANT COUNTY, WI

Section 2, Town 6 North Range 2 West, Town of Fennimore (a)

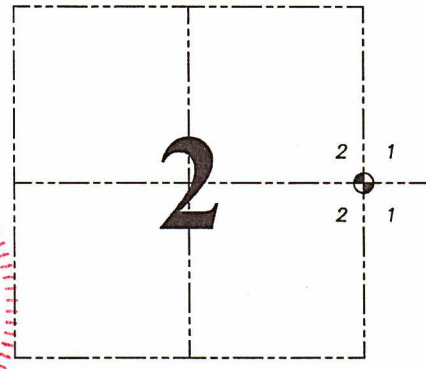
NOTE: This form is intended and designed to fulfill all requirements of the Wisconsin Administrative Code Chapter A-E 7.08, U.S. Public Land Survey Monument Record (3) (a) (b) (c) (d) (e) (f) (g) (h) (i).

CERTIFICATE: (i)

I, Aaron J. Austin, Wisconsin Professional Land Surveyor, do hereby certify that the corner location on this record was determined by me and/or under my direct supervision and that this U.S. Public Land Survey Monument Record is correct and complete to the best of my knowledge and belief.

Dated this 1st day of November, 2021.

Aaron J. Austin
Aaron J. Austin, S-2922



⊕ = CORNER LOCATION

Grant County Coordinates:
NAD 83 (2011)
Northing: 588,011.57
Easting: 857,390.41

HISTORY OF CORNER ESTABLISHMENT:

Original corner was set in 1833 by Harvey Parke.
Larry Austin set an 1" rebar with an Aluminum Capped Rebar and prepared a Survey Monument Record dated 1/12/2001.

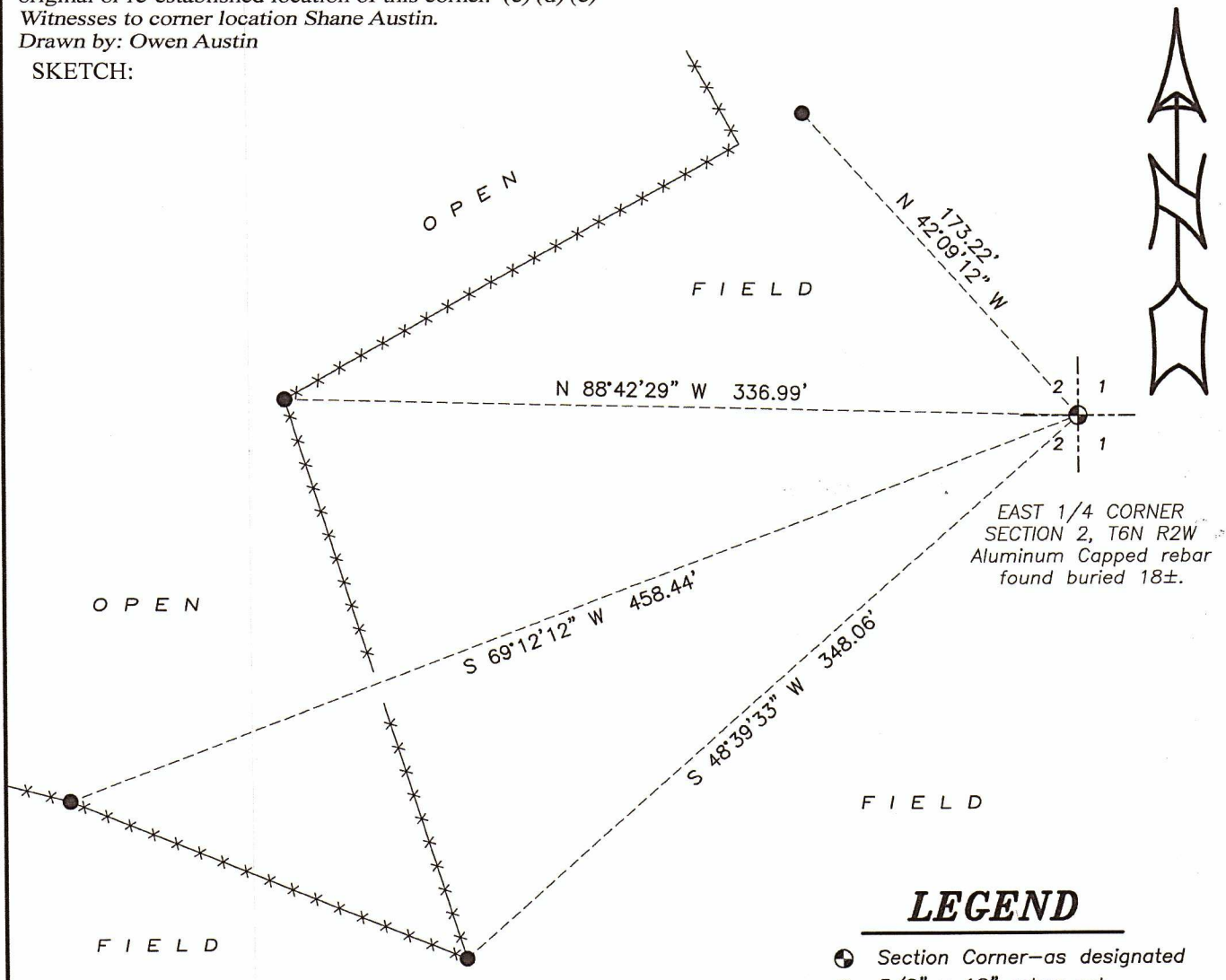
DESCRIPTION OF CORNER EVIDENCE FOUND: (b) (f) (g) (h)

I found the Aluminum capped rebar Larry set. I established four witness corners after I verified the Monument's location with G.P.S. and E.D.M. methods.

DESCRIPTION OF CORNER AND WITNESS MONUMENTS, references and accessories used to perpetuate the original or re-established location of this corner. (c) (d) (e)

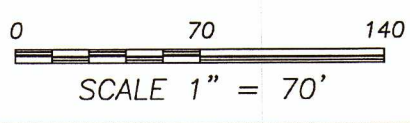
Witnesses to corner location Shane Austin.
Drawn by: Owen Austin

SKETCH:



LEGEND

- ⊕ Section Corner—as designated
- 5/8" x 18" rebar set
- x-x-x Existing fence



GRANT COUNTY CERTIFIED LAND CORNER

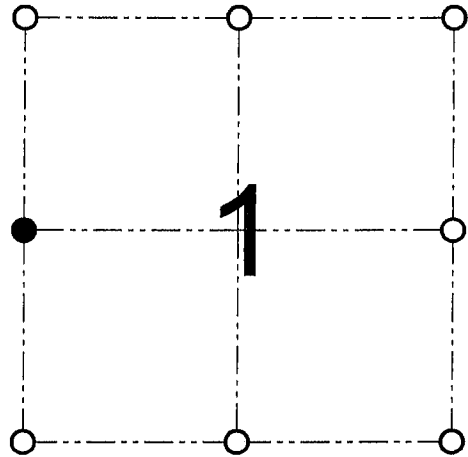
CORNER NUMBER 19

CERTIFICATE:

I, Larry L. Austin, do hereby certify that on the 27th day of December, 2000, I found no evidence of the West 1/4 corner of Section 1, Town 6 North, Range 2 West, of the 4th Principal Meridian, and I re-established said corner according to the Wisconsin statutes as shown and described hereon.

Dated this 12th day of January, 2001

Larry L. Austin
Larry L. Austin S-1903



● = CORNER LOCATION
WEST 1/4 CORNER OF SECTION 1, T 6 N R 2 W TOWN OF FENNIMORE

HISTORY OF ORIGINAL CORNER ESTABLISHMENT:

Corner was originally set in 1833 by Harvey Parke.
No other record of the corner was found.

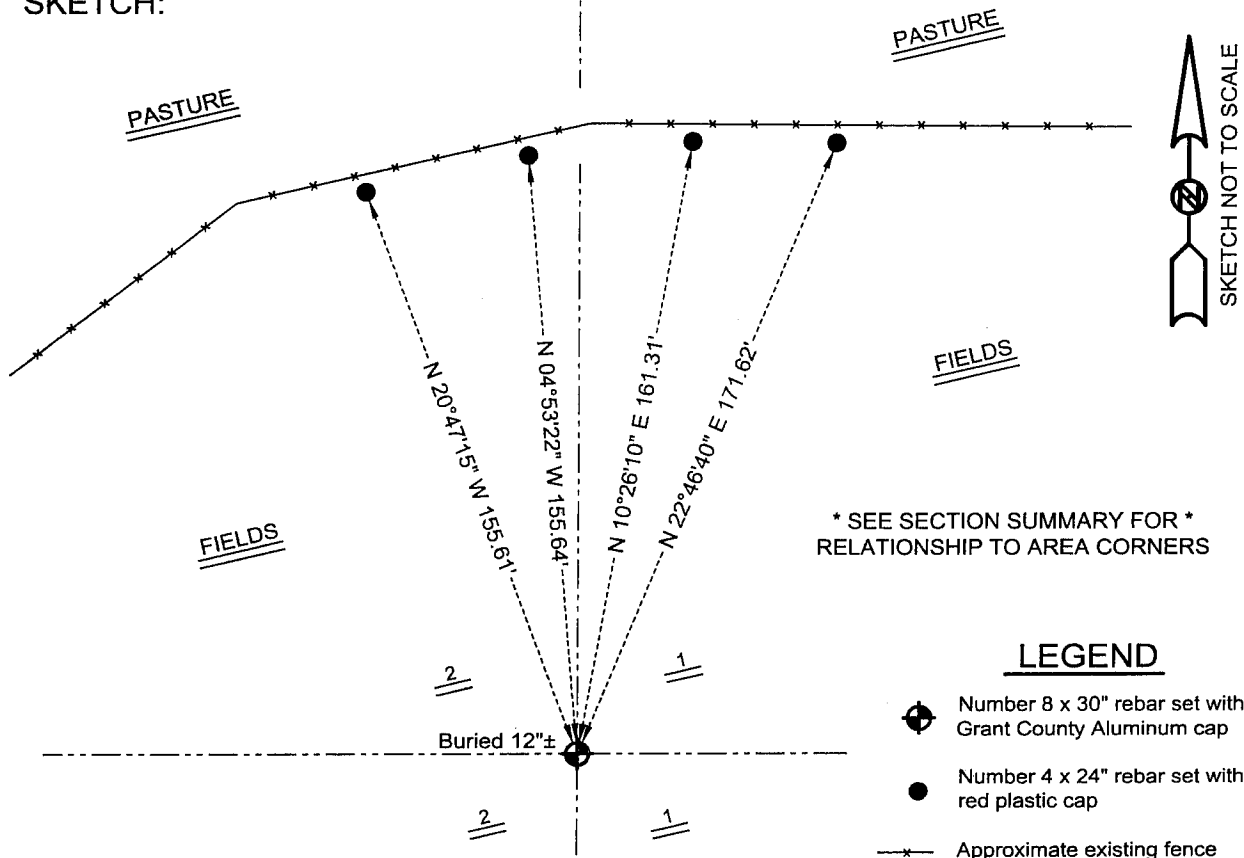
DESCRIPTION OF CORNER EVIDENCE FOUND:

I found no evidence to the location of the corner. I set the corner proportionately between the Northwest and Southwest corners of Section 1. Verified this location using EDM & GPS methods.
~ See Section summary for additional information regarding this corner ~

DESCRIPTION OF CORNER AND WITNESS MONUMENTS, references and accessories used to perpetuate the original or re-established location of this corner

WITNESS TO THE CORNER LOCATION: SHANE AUSTIN & SHELBY BLINDERT & BOBBY SEDGWICK

SKETCH:



* SEE SECTION SUMMARY FOR *
RELATIONSHIP TO AREA CORNERS

LEGEND

- Number 8 x 30" rebar set with Grant County Aluminum cap
- Number 4 x 24" rebar set with red plastic cap
- Approximate existing fence

AUSTIN ENGINEERING, LLC
4211 HWY 81 E, LANCASTER, WI 53813
PHONE 608-723-6363 FAX 608-723-6702

FIELDBOOK: SDR33, 9809
G:\T7NR2W\35
C:\SC14\SWA\TIE\T6NR2W\19

DRAWN BY: SW AUSTIN
APPROVED: LL AUSTIN
CREW: BS - SB - SA - TF