

FOR GRANT COUNTY, WISCONSIN

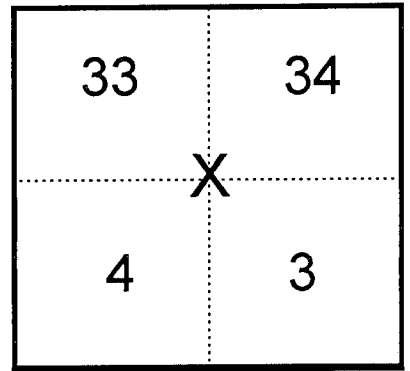
Note: This form is intended and designed to fulfill all requirements of Wisconsin Administrative Code, Chapter AE-7.08, U.S. Public Land Survey Monument Record (3)(a)(b)(c)(d)(e)(f)(g)(h)(i). Use additional sheets if necessary.

(a) The X Section, One Quarter corner common to Sections 3,4,33,34,

Township(s) 06,07 North, Range(s) 02 West.

State Plane Coordinates: N _____

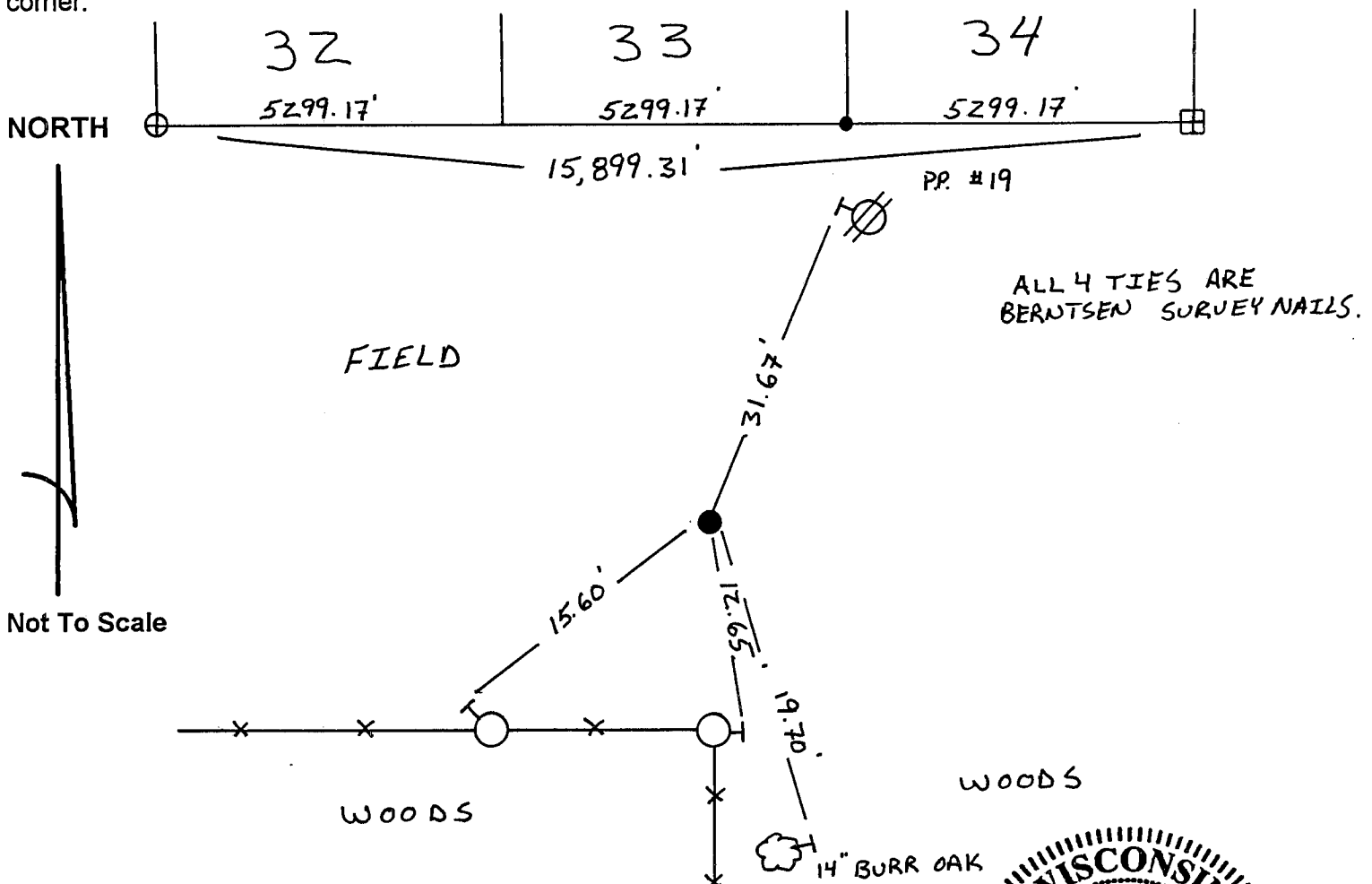
Datum: _____ E _____



(b)(f)(h) Description of monument found at this corner and if it was accepted, state all evidence (material, testimonial, occupational, plats records, other monuments) used as a basis for accepting. If not accepted or nothing was found, state evidence used as basis for establishing location and what was set. If re-established through lost corner proportionate methods, indicate all monuments, distances and directions used.

After extensive field research and testimony from the adjacent property owners the corner location was considered lost. I then prorated on a straight line between the SE of Section 34, a limestone monument, and the SW of Section 32, a 2" Iron Pipe. The corner location fits a fenceline to the south and falls in an area where property owners said they remembered there being a stone but was disturbed and then removed during tree clearing. I set a 1 1/4" Rebar.

(c)(d)(e) Plan view of corner with ties to at least four (4) witness monuments. If in disagreement with previously established corner, show the distances between the two corners and also indicate ties to disputed corner.



(I) Certify that the corner location on this record was determined by me or under my direction and control and that this U.S. Public Land survey Monument Record is correct and complete to the best of my knowledge and belief.



Mathew D. Reigel
Signature

12/15/98
Date

Filed for record in Grant County Surveyor's Office on _____ INDEX NO. _____