

GRANT COUNTY

Survey Monument Record

Castle Rock Jop

TYPE OF MONUMENT 1" Sq. x 36" Steel Rod
 STATE PLANE COORDINATES: N _____
 E _____
 ELEVATION — M.S.L. DATUM: _____
 THETA ANGLE: _____
 FIELD BOOK: _____
 PAGE _____

CORNER NO. 133
 SECTION 31
 TOWN 7 N
 RANGE 1 W

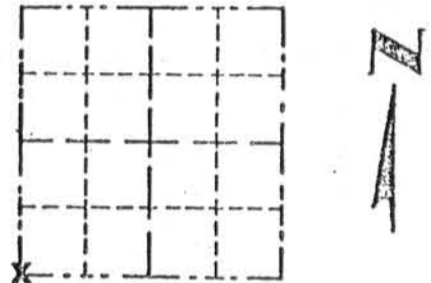
BASIS FOR MONUMENT LOCATION

(Use reverse side if necessary)

Show info such as: History of corner, with reference to Vol. and pg., dates, surveyor; exact description of monument replaced; if location computed, by taped or EDM traverse; landowner, remarks, etc.

Monument destroyed by road construction and reset from ties to a survey by David D. Eisele dated 1971.

SEAL:



LOCATION
(Indicated by "X")



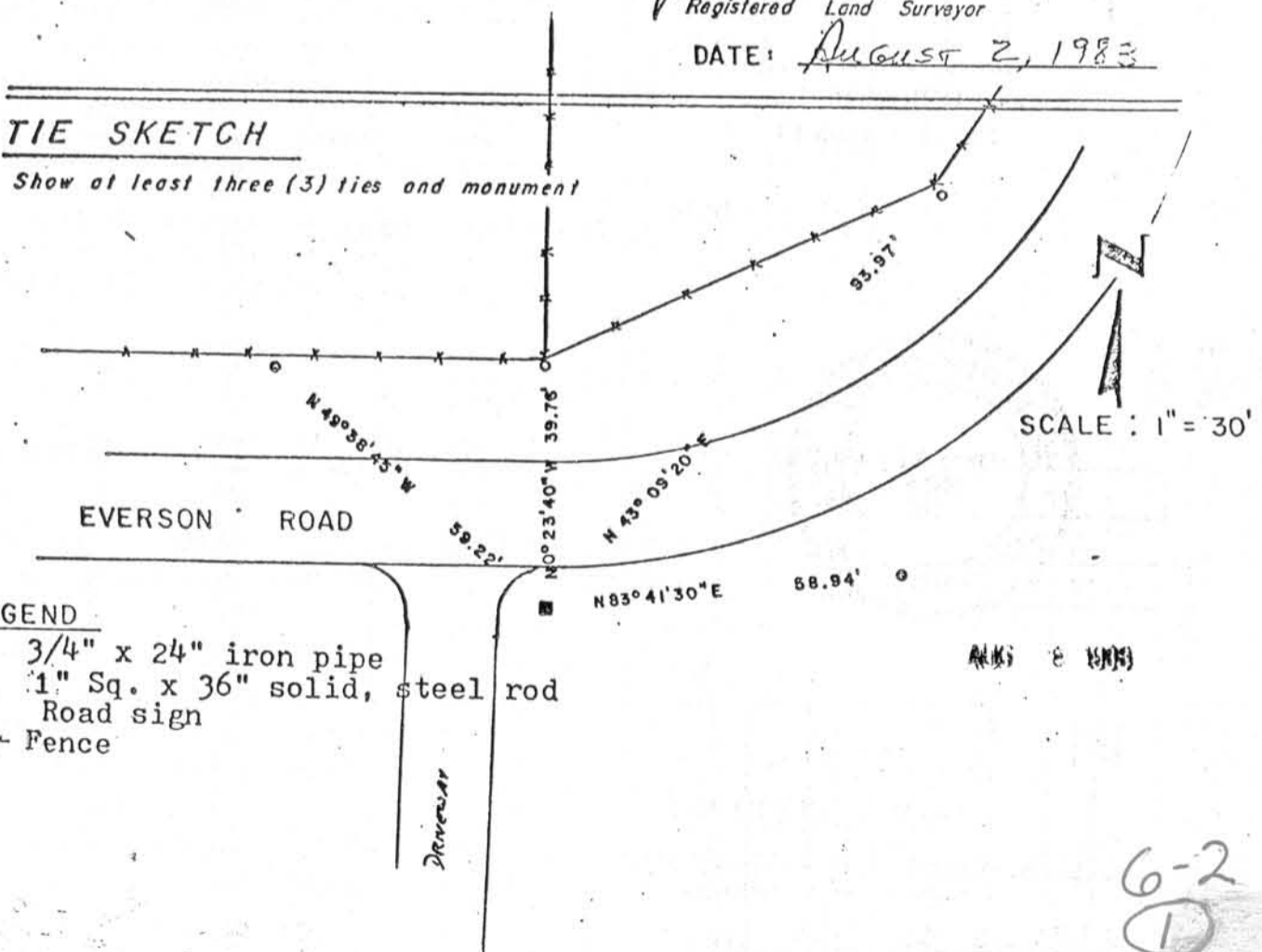
CERTIFIED CORRECT

Bruce D. Bowden
 Registered Land Surveyor

DATE: August 2, 1983

TIE SKETCH

Show at least three (3) ties and monument



- LEGEND
- 3/4" x 24" iron pipe
 - 1" Sq. x 36" solid, steel rod
 - △ Road sign
 - +—+—+— Fence

6-2
 (1)