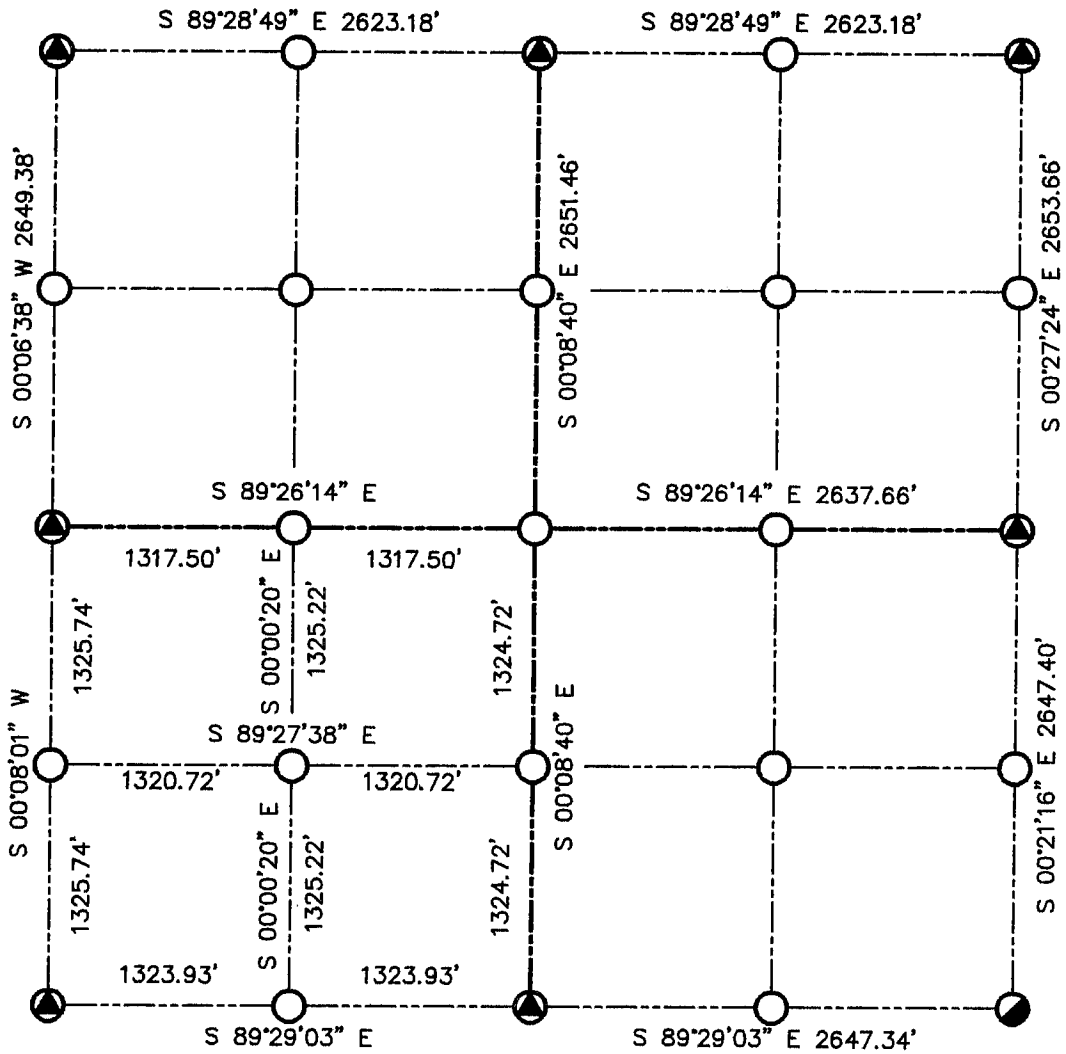


GRANT COUNTY SECTION SUMMARY

$\frac{35}{\text{SECTION}} - \frac{6N}{\text{TOWN}} - \frac{1W}{\text{RANGE}}$



LEGEND

- NO. 8 X 30" REBAR SET WITH GRANT COUNTY ALUMINUM CAP
- 1" IRON PIPE FOUND

NOTE:

Relationships of all section corners to other section corners shall be shown hereon by bearing and distance or grid coordinates
 Show or describe bearing reference



BEARINGS REFERENCED TO THE EAST-WEST
 QUARTER LINE OF SECTION 35, WHICH IS
 ASSUMED TO BEAR S 89°26'14" E.