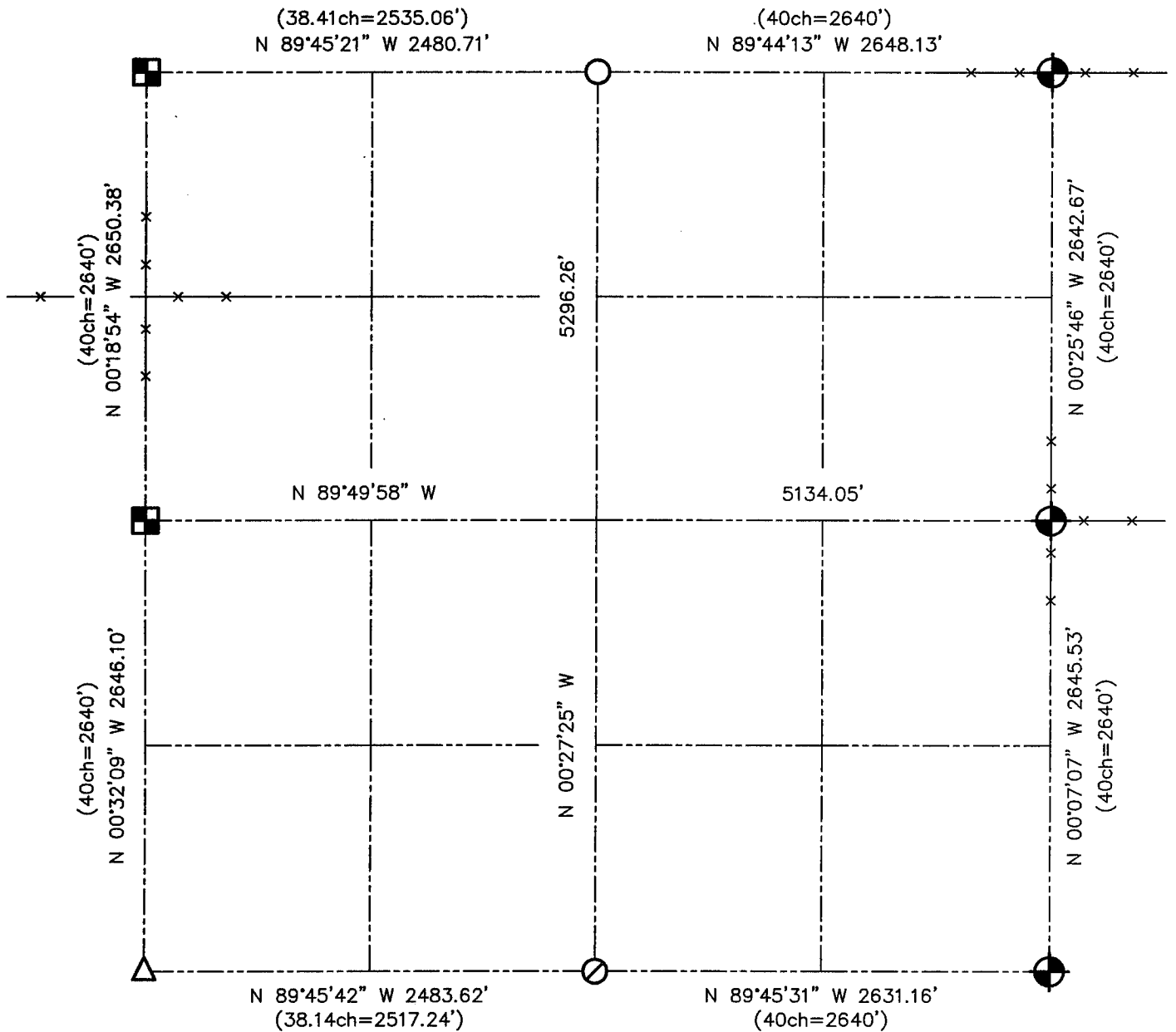








U.S. PUBLIC LAND SURVEY MONUMENT RECORD - GRANT COUNTY, WI

Summary of Section 19, Town 6 North Range 1 West, Town of Wingville



LEGEND

-  NUMBER 8 x 30" REBAR SET WITH GRANT COUNTY ALUMINUM CAP
-  ALUMINUM MONUMENT FOUND WITH GRANT COUNTY ALUMINUM CAP
-  P.K. NAIL FOUND
-  NUMBER 6 IRON BAR FOUND
-  1" DIAMETER IRON PIPE FOUND
-  () RECORDED AS



Relationship of all section corners to other section corners shall be shown hereon by bearing and distance or grid coordinates. Bearing reference shown below.



Bearings referenced to the East-West 1/4 line of Section 19, which is assumed to bear N 89°49'58" W.

SKETCH NOT TO SCALE

AUSTIN ENGINEERING, LLC

4211 HWY 81 EAST, LANCASTER, WI 53813
PHONE 608-723-6363 FAX 608-723-6702

FIELDBOOK: SDR33, 2000
G: \T6NR2W\23
C: \SWA\TIE\T6NR2W\19SUM

CREW: BS-SB-SA-TF
DRAWN BY: SW AUSTIN
APPROVED: LL AUSTIN