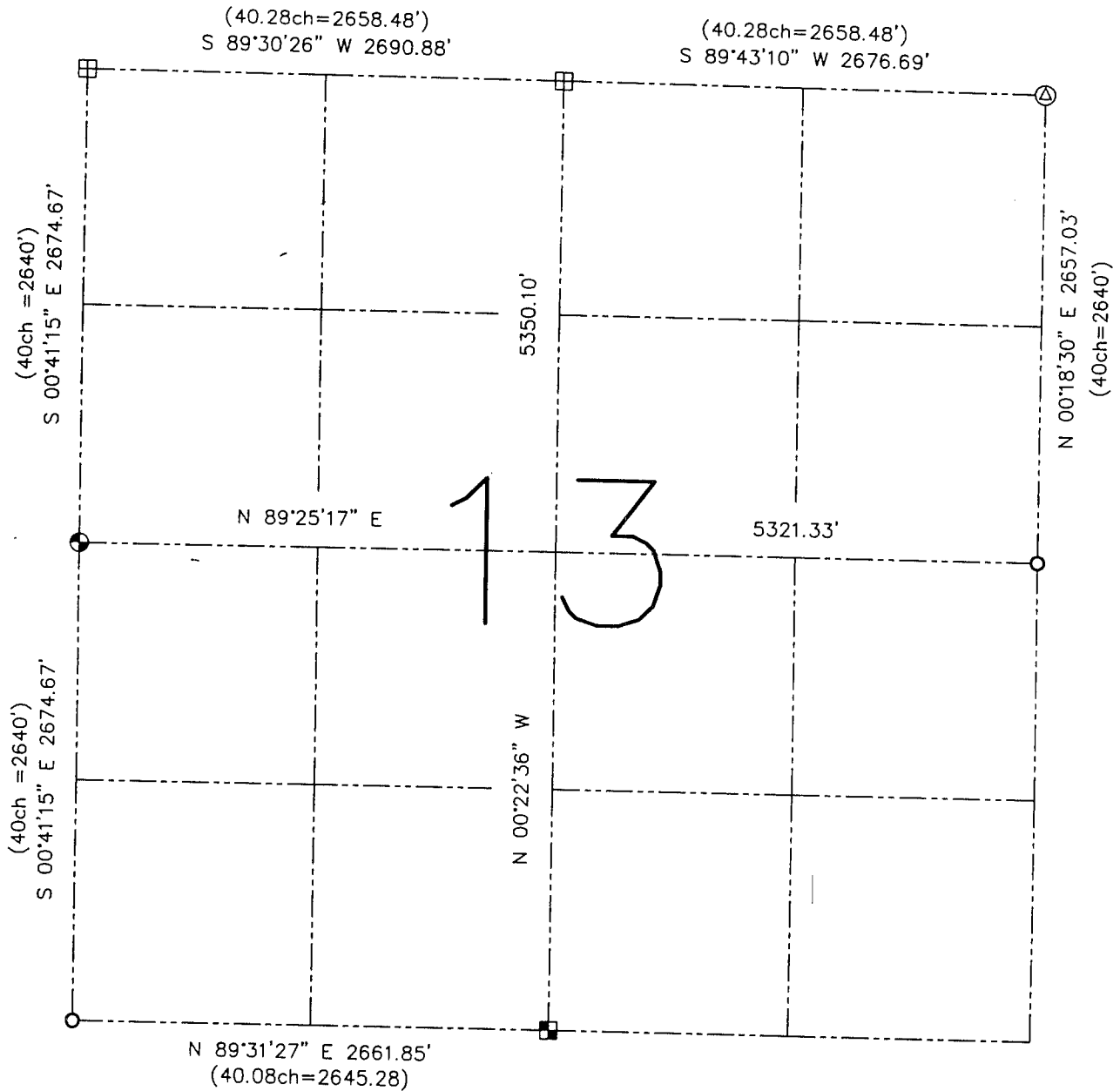


**U.S. PUBLIC LAND SURVEY MONUMENT RECORD – GRANT COUNTY, WI**  
**Summary of Section 13, Town 6 North, Range 1 West, Town of Wingville**



**LEGEND**

- ⊕ No. 8 x 30" rebar set with Grant County Aluminum Cap – wt=2.67#/l.f.
- No. 6 rebar found
- ⊞ Cast Aluminum Monument
- ⊙ Railroad spike found
- ( ) Recorded as

Relationship of all section corners to other section corners shall be shown hereon by bearing and distance or grid coordinates. Bearing reference shown below.

Dated this 2nd day of August, 2002

*Larry L. Austin*  
 Larry L. Austin S-1903



Bearings referenced to the East-West Quarter line of this Section, which is assumed to bear N 89°25'17" E.

SKETCH NOT TO SCALE