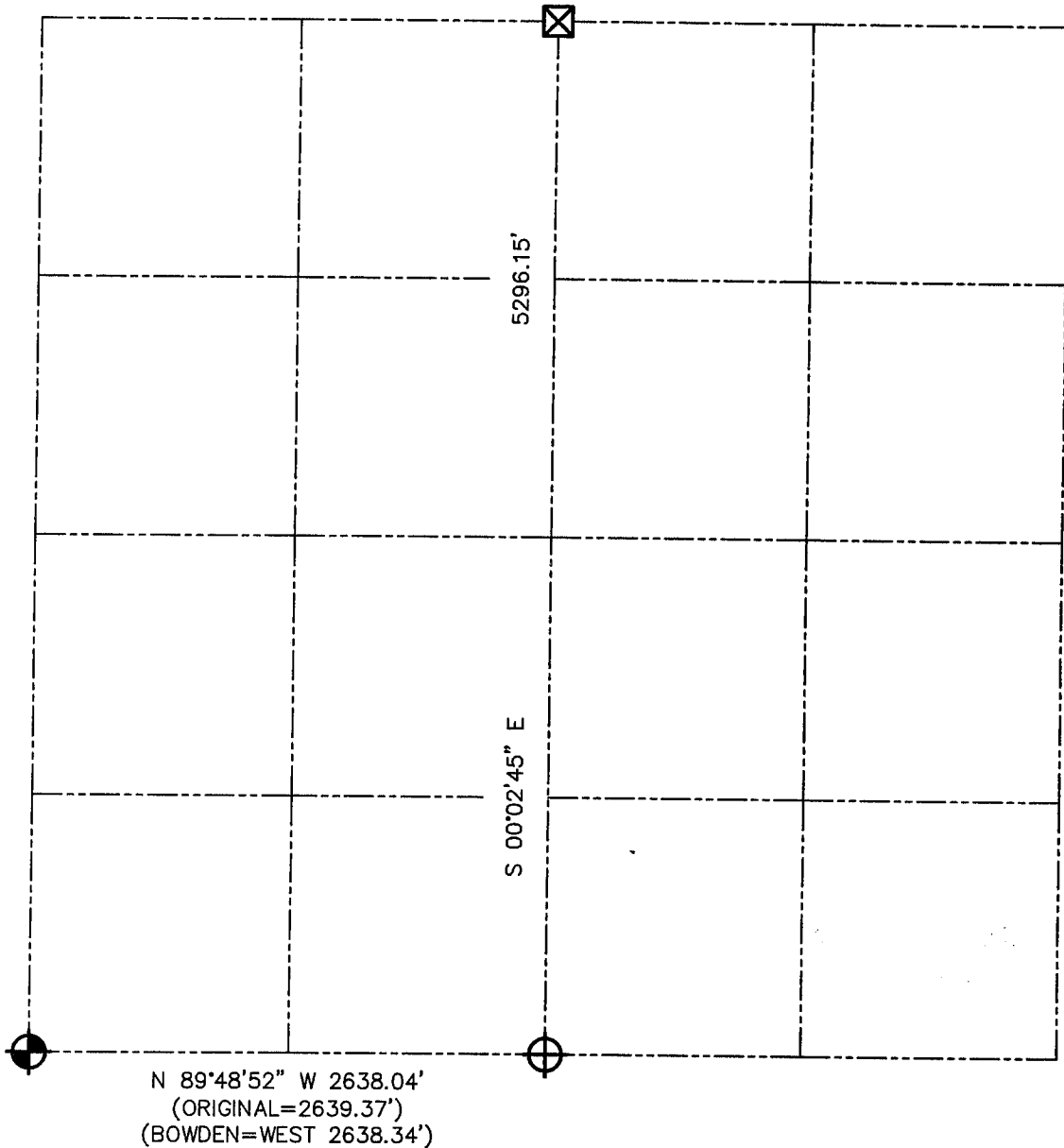






U.S. PUBLIC LAND SURVEY MONUMENT RECORD - GRANT COUNTY, WI
 Summary of Section 11, Town 6 North Range 1 West, Town of Wingville



LEGEND

-  NUMBER 8 x 30" REBAR SET WITH GRANT COUNTY ALUMINUM CAP
-  NUMBER 8 REBAR FOUND
-  7" CONCRETE OBELISK FOUND
-  () RECORDED AS



Relationship of all section corners to other section corners shall be shown hereon by bearing and distance or grid coordinates. Bearing reference shown below.

Dated this 21st day of August, 2001
 LARRY L. AUSTIN
 3-1903
 LANCASTER
 Land Surveyor
 Wisconsin
 Austin S-1903

Bearings referenced to the South line of the Southwest 1/4 of Section 11, which is assumed to bear N 89°48'52" W.

SKETCH NOT TO SCALE

AUSTIN ENGINEERING, LLC
 4211 HWY 81 EAST, LANCASTER, WI 53813
 PHONE 608-723-6363 FAX 608-723-6702

FIELDBOOK: SDR33, 2107
 G: \T6NR1W\11
 C: \SWA\TIE\T6NR1W\44

CREW: BS-SB-SA-TF
 DRAWN BY: SW AUSTIN
 APPROVED: LL AUSTIN