

61129

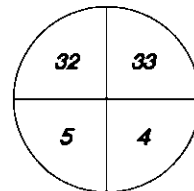
U.S. PUBLIC LAND SURVEY MONUMENT RECORD

Wisconsin Department of Transportation

DT1291 2/2006

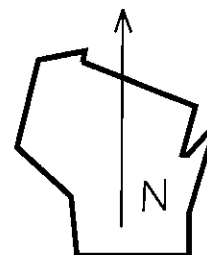
County Name Grant		Name of <input checked="" type="checkbox"/> Township, <input type="checkbox"/> City, <input type="checkbox"/> Village Wingville	
Surveyor Name Michael T. Schinke			
Address, City, State, ZIP Code 7501 College Blvd Suite 101 Overland Park, KS 66210			
Y (Northing) 344641.493	X (Easting) 1832645.840	Latitude	Longitude
Project ID 0020543.00		Coordinate ID	

T. 6 N. -- R. 1 W
4 th Principal Meridian
Corner **129**



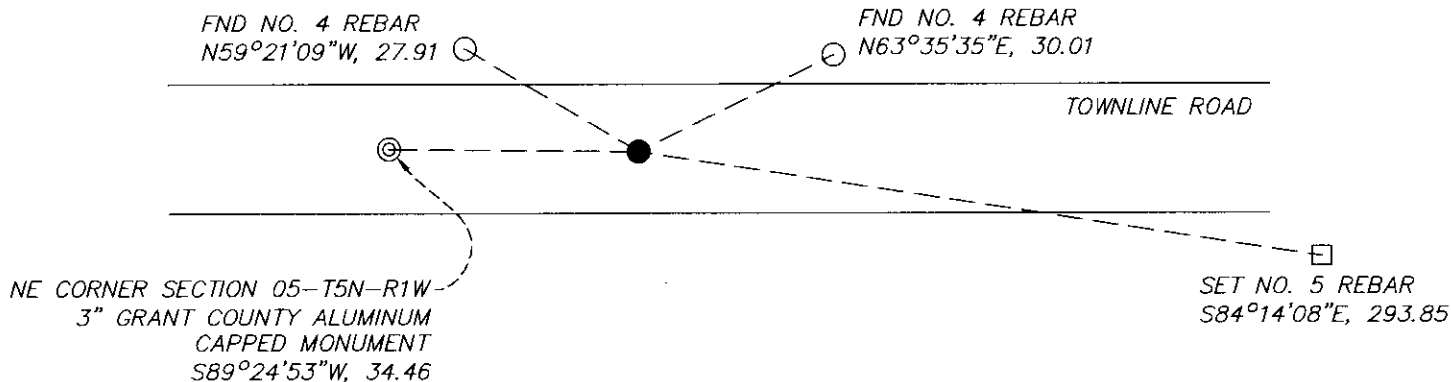
- HORIZONTAL DATUM UNITS
- NAD 27
 - English
 - NAD 83 (1991)
 - Metric
 - NAD 83 (1997)
 - Other-- NAD 83 (2011)

- COORDINATE SYSTEM
- Geodetic
 - State Plane South Zone
 - County



Location Diagram, showing corner identification name, bearing and distance references to at least four witness monuments, fence or occupational lines, centerlines of roads, and other site details for reference. Also, show the bearings and distances between the witness monuments.

Southeast Corner Section 32, Township 6 North, Range 1 West, Grant County, Wisconsin



Indicate fd. = found or pl. = placed in the diagram below
Bearings used in the location sketch and basis for monument location are assumed, unless as noted.
Monumentation Legend / Description of Corner and Witness Monuments.

- ⊙ FND 3" GRANT COUNTY ALUMINUM CAPPED MONUMENT
- FND NO. 4 REBAR
- SET NO. 5 REBAR
- FOUND 3/4" REBAR, 0.7' DOWN

If applicable, show any discrepancy between the location of the corner as restored or re-established and the location of that corner as previously restored or re-established by bearing and distance. Also, show the bearings and distances between the previous corner and at least two of the witness monuments.

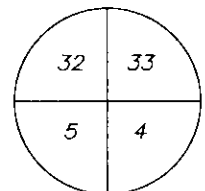
Basis for Monument Location

1. Describe any record evidence, monument evidence, occupational evidence or any other material evidence including traverse measurements that you considered, and whether the monument was found or placed. Explain below, be specific, and attach a separate sheet if necessary.

2. Was the corner.
 - a. found perpetuate
 - b. restored through acceptance of obliterated evidence.
 - c. relocated by witness testimony, or
 - d. accepted as a re-monumented corner of record and maintained with additional monumentation?

3. Was the corner re-established through lost corner proportionate methods? If so, show the method, including the directions and distances to other public land survey corners used as evidence or used in determining the corner location.
 1. Westwood Professional Services searched the area and found a nail down 0.1' and a 3/4" bar underneath, down 0.7'. Also found 2 of 3 ties per the 1999 Buck corner record. Accepting the found 3/4" bar as the corner location and set one tie.
 2. D
 3. No.

T. 6 N. R. 1 W.
4th Principal Meridian
Corner 129



Certification

I, Michael T. Schinke, certify that the corner location shown on the record was determined by me or under my direction and control and that the U.S. Public Land Survey Monument Record is correct and complete to the best of my knowledge and belief, in accordance with Chapter A-E 7.08 of the Wisconsin Administration Code.

Section Control Data Sheets have been filed in the County Surveyor's office, showing final measurements by direction and distance between all re-monumented corners. Section Control information is referenced by the following.

Date	Project ID 0020543.00	Sheet(s) 2 of 2
------	--------------------------	--------------------



x Michael T Schinke

(Registered Land Surveyor Signature and Number)

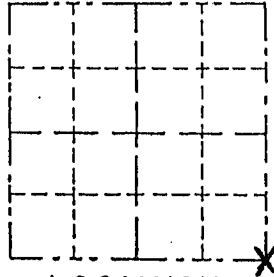
04/23/2020

Date

Survey Monument Record

TYPE OF MONUMENT 3/4" X 24" Iron Rod
 STATE PLANE COORDINATES: N _____
 E _____
 ELEVATION — M.S.L. DATUM: _____
 THETA ANGLE: _____
 FIELD BOOK: _____
 PAGE _____

CORNER NO. _____
 SECTION 32
 TOWN 6 NORTH
 RANGE 1 WEST



LOCATION
 (Indicated by "X")

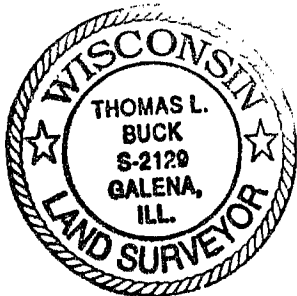
- FOUND PERPETUATED LOCATION
- OBLITERATED EVIDENCE LOCATION
- LOST CORNER (RESTORED BY PROPORTIONATE METHODS)

BASIS FOR MONUMENT LOCATION

(Use reverse side if necessary)

Show info such as: History of corner, with reference to Vol. and pg., dates, surveyor; exact description of monument replaced; if location computed, by taped or EDM traverse; landowner, remarks, etc.

I FOUND NO HISTORY OF THIS CORNER SINCE THE ORIGINAL GOVERNMENT SURVEY. I SET THIS CORNER BY USING THE PROPORTIONATE METHOD AFTER AN E.D.M. TRAVERSE AND LOCATION SURVEY OF SECTIONS 32 + 33



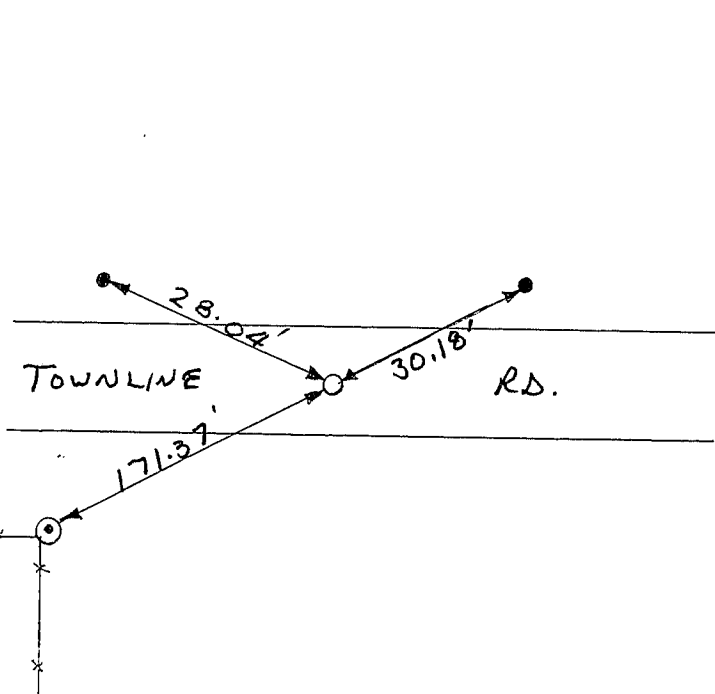
CERTIFIED CORRECT TO THE BEST OF MY KNOWLEDGE AND BELIEF

Thomas Buck
 Registered Land Surveyor

DATE: 7/30/99

TIE SKETCH

Show at least three (3) ties and monument



NO SCALE

- = 3/4" X 24" Iron Rod
- ⊙ = P.K. w/SHINER TOP OF POST
- = 1/2" Iron Rod
- x-x- = EXISTING FENCE