

61128

U.S. PUBLIC LAND SURVEY MONUMENT RECORD - GRANT COUNTY, WI

Section 33, Town 6 North Range 1 West, Town of Wingville (a)

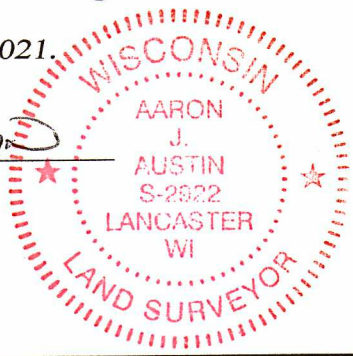
NOTE: This form is intended and designed to fulfill all requirements of the Wisconsin Administrative Code Chapter A-E 7.08, U.S. Public Land Survey Monument Record (3) (a) (b) (c) (d) (e) (f) (g) (h) (i).

CERTIFICATE: (i)

I, Aaron J. Austin, Wisconsin Professional Land Surveyor, do hereby certify that the corner location on this record was determined by me and/or under my direct supervision and that this U.S. Public Land Survey Monument Record is correct and complete to the best of my knowledge and belief.

Dated this 1st day of April, 2021.

Aaron J. Austin
Aaron J. Austin, S-2922



Grant County Coordinates:
NAD 83 (2011)
Northing: 558,957.95
Easting: 876,006.48

HISTORY OF CORNER ESTABLISHMENT:

Original corner was set in 1832 by Sibley.
Thomas Buck set a 3/4" Iron Rod and prepared a Survey Monument Record dated 7/30/1999.

DESCRIPTION OF CORNER EVIDENCE FOUND: (b) (f) (g) (h)

I found the 3/4" Iron Rod Thomas Buck set. I established four witness corners after I verified the Monument's location with G.P.S. and E.D.M. methods.

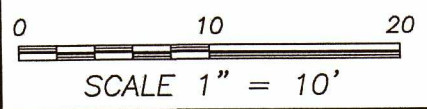
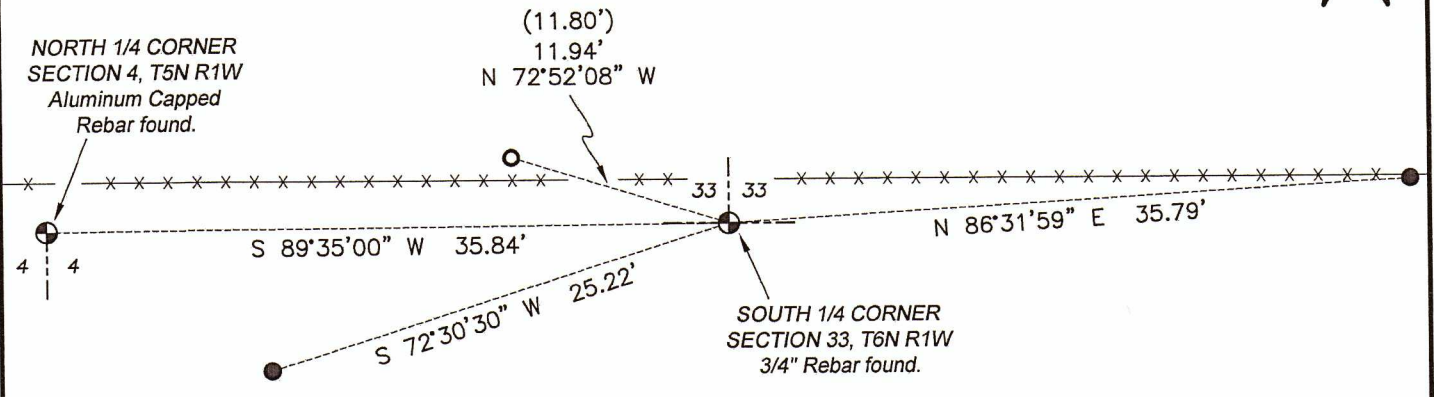
DESCRIPTION OF CORNER AND WITNESS MONUMENTS, references and accessories used to perpetuate the original or re-established location of this corner. (c) (d) (e)

Witnesses to corner location Shane Austin, Owen Austin.
Drawn by Owen Austin

SKETCH:

LEGEND

- ⊕ Section Corner—as designated
- 1/2" rebar found
- 3/4" x 18" rebar set
- () Recorded as



Survey Monument Record

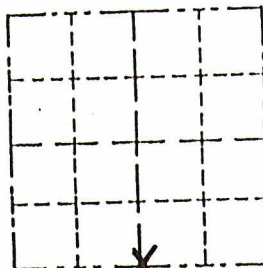
TYPE OF MONUMENT 3/4" X 24" IRON ROD
 STATE PLANE COORDINATES: N _____
 E _____
 ELEVATION — M.S.L. DATUM: _____
 THETA ANGLE: _____
 FIELD BOOK: _____
 PAGE _____

CORNER NO. _____
 SECTION 33
 TOWN 6 NORTH
 RANGE 1 WEST

BASIS FOR MONUMENT LOCATION

(Use reverse side if necessary)

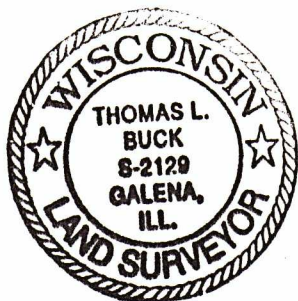
Show info such as: History of corner, with reference to Vol. and pg., dates, surveyor; exact description of monument replaced; if location computed, by taped or EDM traverse; landowner, remarks, etc.



LOCATION
 (Indicated by "X")

- FOUND PERPETUATED LOCATION
- OBSOLETE EVIDENCE LOCATION
- LOST CORNER (RESTORED BY PROPORTIONATE METHODS)

I FOUND NO HISTORY OF THIS CORNER SINCE THE ORIGINAL GOVERNMENT SURVEY. I HAD ESTABLISHED THE NORTH 1/4 CORNER OF SECTION 4, T5N, R1W & THE NORTH LINE OF THE NE 1/4 OF SEC. 4 IN A PREVIOUS SURVEY. I HELD THAT LINE AND USED THE OFFSET BETWEEN THE N 1/4 CORNER OF SEC. 4 & THE S 1/4 CORNER OF SEC. 33.



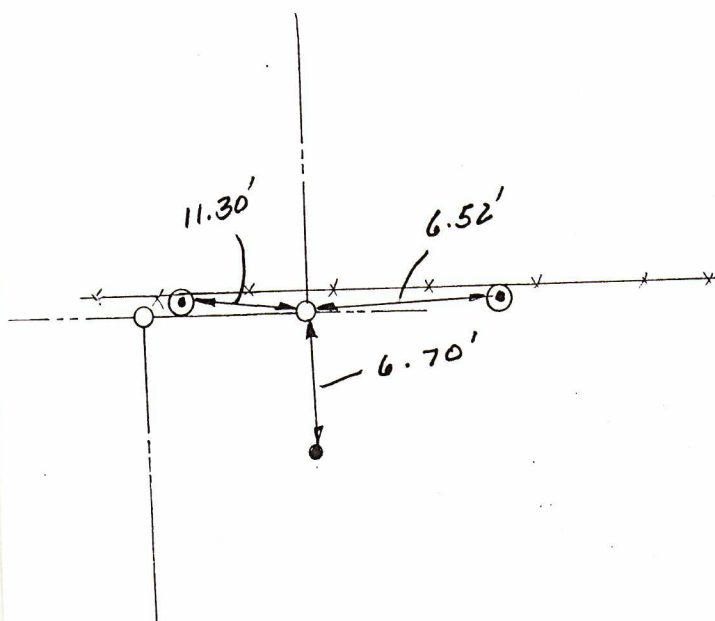
CERTIFIED CORRECT TO THE BEST OF MY KNOWLEDGE AND BELIEF

Thomas Buck
 Registered Land Surveyor

DATE: 7/30/99

TIE SKETCH

Show at least three (3) ties and monument



NO SCALE

- ⊙ = P.K. W/SHINER TOP OF POST
- = 3/4" X 24" IRON ROD
- = 1/2" IRON ROD
- x — x = EXISTING FENCE