

U.S. PUBLIC LAND SURVEY MONUMENT RECORD

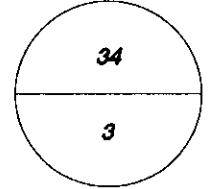
Wisconsin Department of Transportation

DT1291 2/2006

61126

County Name Grant		Name of <input checked="" type="checkbox"/> Township, <input type="checkbox"/> City, <input type="checkbox"/> Village Wingville	
Surveyor Name Michael T. Schinke			
Address, City, State, ZIP Code 7501 College Blvd Suite 101 Overland Park, KS 66210			
Y (Northing) 344564.163	X (Easting) 1840594.723	Latitude	Longitude
Project ID 0020543.00		Coordinate ID	

T. 6 N. - R. 1 W
4th Principal Meridian
Corner **126**

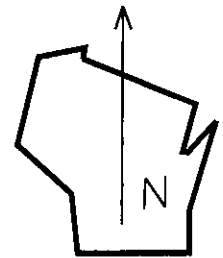


HORIZONTAL DATUM UNITS

- NAD 27
- NAD 83 (1991)
- NAD 83 (1997)
- Other- NAD 83 (2011)
- English
- Metric

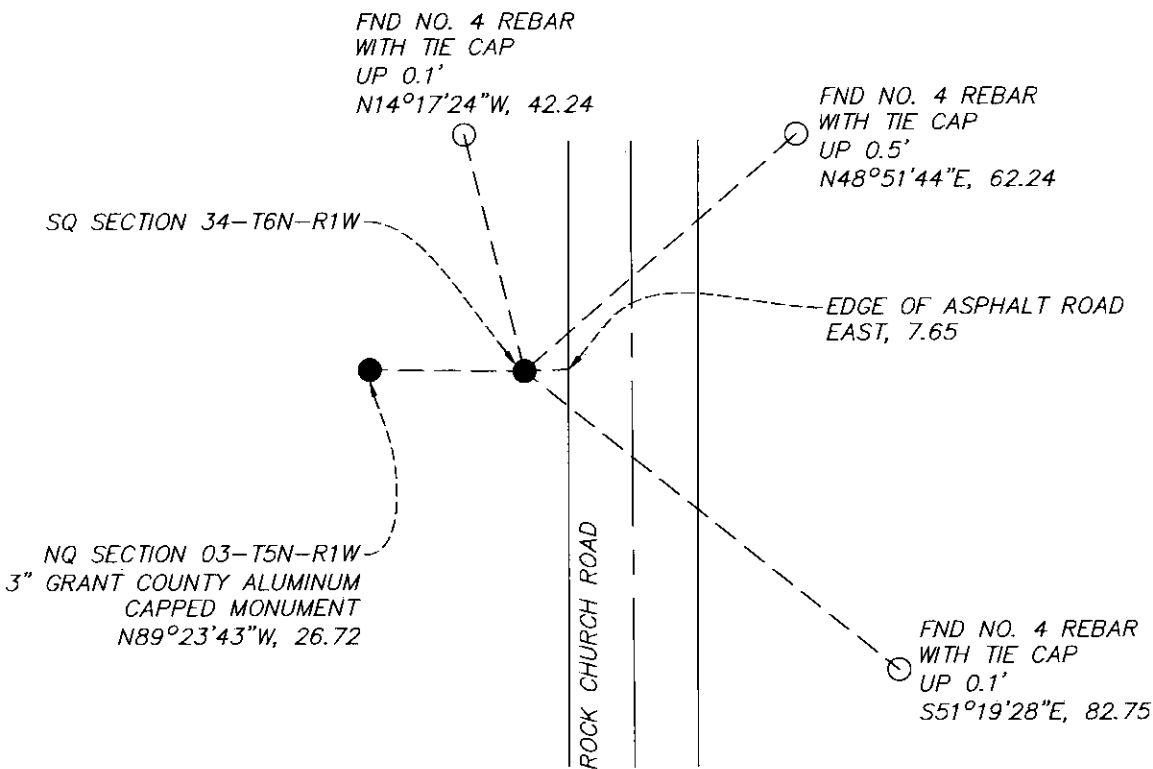
COORDINATE SYSTEM

- Geodetic
- State Plane South Zone
- County



Location Diagram, showing corner identification name, bearing and distance references to at least four witness monuments, fence or occupational lines, centerlines of roads, and other site details for reference. Also, show the bearings and distances between the witness monuments.

South Quarter Corner Section 34, Township 6 North, Range 1 West, Grant County, Wisconsin



Indicate fd. = found or pl. = placed in the diagram below
Bearings used in the location sketch and basis for monument location are assumed, unless as noted.
Monumentation Legend / Description of Corner and Witness Monuments.

- FND NO. 4 REBAR
- FND 3" GRANT COUNTY ALUMINUM CAPPED MONUMENT

If applicable, show any discrepancy between the location of the corner as restored or re-established and the location of that corner as previously restored or re-established by bearing and distance. Also, show the bearings and distances between the previous corner and at least two of the witness monuments.

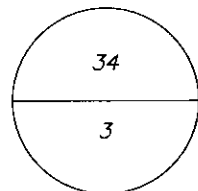
Basis for Monument Location

1. Describe any record evidence, monument evidence, occupational evidence or any other material evidence including traverse measurements that you considered, and whether the monument was found or placed. Explain below, be specific, and attach a separate sheet if necessary.

 2. Was the corner.
 - a. found perpetuate
 - b. restored through acceptance of obliterated evidence.
 - c. relocated by witness testimony, or
 - d. accepted as a re-monumented corner of record and maintained with additional monumentation?

 3. Was the corner re-established through lost corner proportionate methods? If so, show the method, including the directions and distances to other public land survey corners used as evidence or used in determining the corner location.
-
1. Westwood Professional Services searched the area and found the 3" Grant County Monument referenced in the 2000 and 2019 Larry Austin surveys, and the 2004 monument record by Larry Austin. Found 2 of 4 ties per said 2004 monument record and 1 tie of unknown origin. Accepting found Grant County Aluminum cap as the corner location and updated monument record.
 2. D
 3. NO

T. 6 N. R. 1 W.
4th Principal Meridian
Corner 126

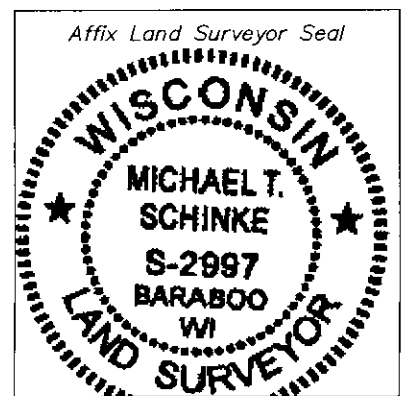


Certification

I, Michael T. Schinke, certify that the corner location shown on the record was determined by me or under my direction and control and that the U.S. Public Land Survey Monument Record is correct and complete to the best of my knowledge and belief, in accordance with Chapter A-E 7.08 of the Wisconsin Administration Code.

Section Control Data Sheets have been filed in the County Surveyor's office, showing final measurements by direction and distance between all re-monumented corners. Section Control information is referenced by the following.

Date	Project ID 0020543.00	Sheet(s) 2 of 2
------	--------------------------	--------------------



x *Michael T Schinke*

(Registered Land Surveyor Signature and Number)

04/23/2020

Date

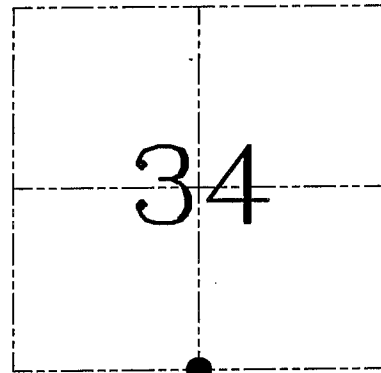
U.S. PUBLIC LAND SURVEY MONUMENT RECORD – GRANT COUNTY, WI
Section 34, Town 6 North Range 1 West, Town of Wingville

CERTIFICATE

I, Larry L. Austin, do hereby certify that the corner location on this record was determined by me and/or under my direct supervision and that this U.S. public land survey monument record is correct and complete to the best of my knowledge and belief.

Dated this 13th day of March, 2004

Larry L. Austin
 Larry L. Austin S-1903



● = CORNER LOCATION

HISTORY OF CORNER ESTABLISHMENT

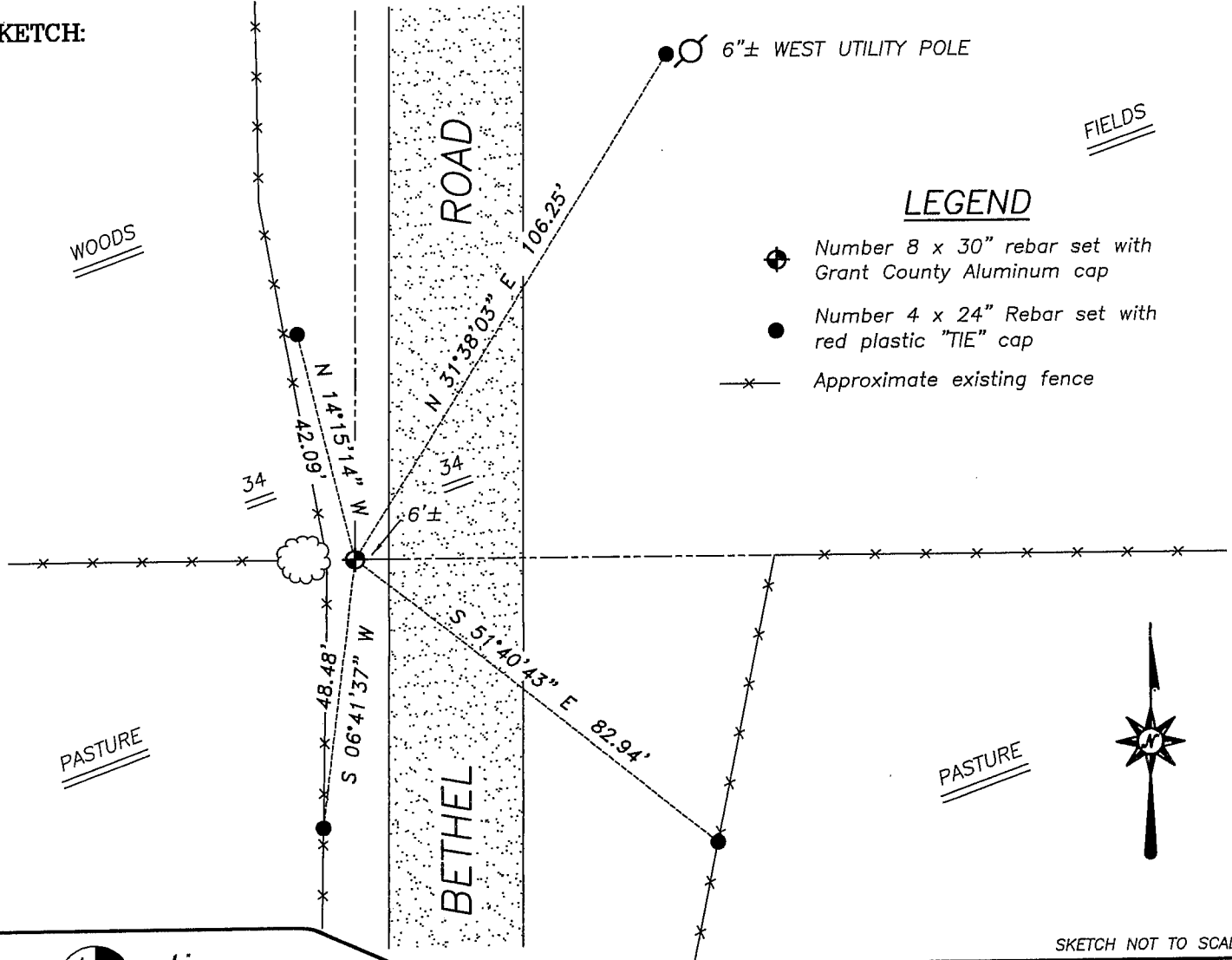
Corner was originally set in 1832 by Sibley. Everett tied to the corner in 1858. In 1877 Barber tied to the corner and found old bearings to the corner. No other record of the corner was found.

DESCRIPTION OF CORNER EVIDENCE FOUND

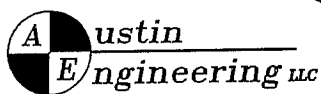
I found no evidence to the location of the original corner. I reset the corner based on an existing East-West fence for Northing. Easting was established based on proportioning between the monumented Southeast corner and occupied Southwest corner. Verified this location using EDM & GPS methods.

DESCRIPTION OF CORNER AND WITNESS MONUMENTS, references and accessories used to perpetuate the original or re-established location of this corner. Witnesses to corner location Bobby Sedgwick & Shane Austin & Cody Austin

SKETCH:



SKETCH NOT TO SCALE



4211 HWY 81 E, LANCASTER, WI 53813
 PHONE 608-723-6363 FAX 608-723-6702

FIELDBOOK: TSDR, 2000, 2326
 G:\T6NR1W\35
 H:\TIE\T6NR1W\126

DRAWN BY: SW AUSTIN
 APPROVED: LL AUSTIN