

61125

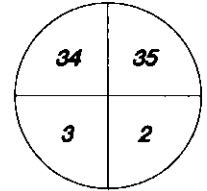
U.S. PUBLIC LAND SURVEY MONUMENT RECORD

Wisconsin Department of Transportation

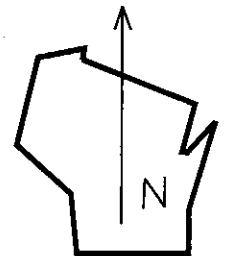
DT1291 2/2006

County Name Grant		Name of <input checked="" type="checkbox"/> Township, <input type="checkbox"/> City, <input type="checkbox"/> Village Wingville	
Surveyor Name Michael T. Schinke			
Address, City, State, ZIP Code 7501 College Blvd Suite 101 Overland Park, KS 66210			
Y (Northing) 344529.570	X (Easting) 1843237.484	Latitude	Longitude
Project ID 0020543.00		Coordinate ID	

T. 6 N. - R. 1 W
4 th Principal Meridian
Corner **125**

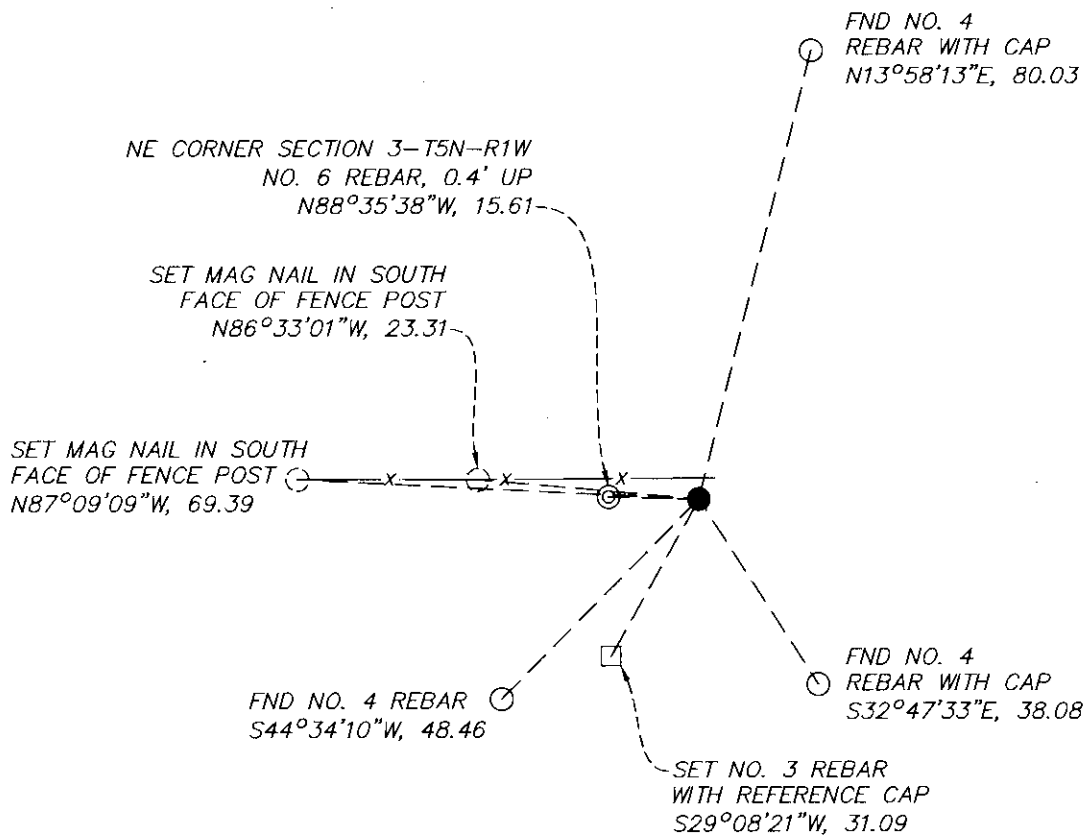


- HORIZONTAL DATUM UNITS
- NAD 27
 - NAD 83 (1991)
 - NAD 83 (1997)
 - Other- NAD 83 (2011)
- COORDINATE SYSTEM
- Geodetic
 - State Plane South Zone
 - County
- English Metric



Location Diagram, showing corner identification name, bearing and distance references to at least four witness monuments, fence or occupational lines, centerlines of roads, and other site details for reference. Also, show the bearings and distances between the witness monuments.

Southeast Corner Section 34, Township 6 North, Range 1 West, Grant County, Wisconsin



Indicate fd. = found or pl. = placed in the diagram below
Bearings used in the location sketch and basis for monument location are assumed, unless as noted.
Monumentation Legend / Description of Corner and Witness Monuments.

- ⊙ SET NO. 6 REBAR
- FND NO. 4 REBAR
- SET NO. 3 REBAR WITH REFERENCE CAP
- SET MAG NAIL
- FND 3" GRANT COUNTY ALUMINUM CAPPED MONUMENT

If applicable, show any discrepancy between the location of the corner as restored or re-established and the location of that corner as previously restored or re-established by bearing and distance. Also, show the bearings and distances between the previous corner and at least two of the witness monuments.

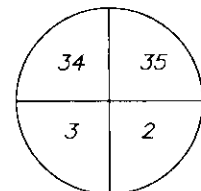
Basis for Monument Location

1. Describe any record evidence, monument evidence, occupational evidence or any other material evidence including traverse measurements that you considered, and whether the monument was found or placed. Explain below, be specific, and attach a separate sheet if necessary.

2. Was the corner.
 - a. found perpetuate
 - b. restored through acceptance of obliterated evidence.
 - c. relocated by witness testimony, or
 - d. accepted as a re-monumented corner of record and maintained with additional monumentation?

3. Was the corner re-established through lost corner proportionate methods? If so, show the method, including the directions and distances to other public land survey corners used as evidence or used in determining the corner location.
 1. Westwood Professional Services searched the area and found the Grant County Aluminum cap and 3 of 4 ties per the Larry Austin 1999 corner certificate. Found monument agrees with local evidence and previous surveys. Accepting as corner location and set 1 additional tie.
 2. D
 3. NO

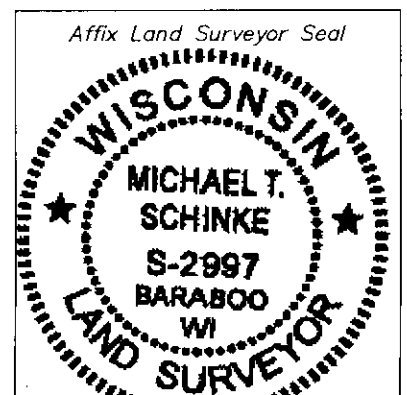
T. 6 N. R. 1 W.
4 th Principal Meridian
Corner 125



Certification

I, Michael T. Schinke, certify that the corner location shown on the record was determined by me or under my direction and control and that the U.S. Public Land Survey Monument Record is correct and complete to the best of my knowledge and belief, in accordance with Chapter A-E 7.08 of the Wisconsin Administration Code.

Section Control Data Sheets have been filed in the County Surveyor's office, showing final measurements by direction and distance between all remonumented corners. Section Control information is referenced by the following.



Date	Project ID 0020543.00	Sheet(s) 2 of 2
------	--------------------------	--------------------

x Michael T Schinke
(Registered Land Surveyor Signature and Number)

04/23/2020
Date

GRANT COUNTY CERTIFIED LAND CORNER

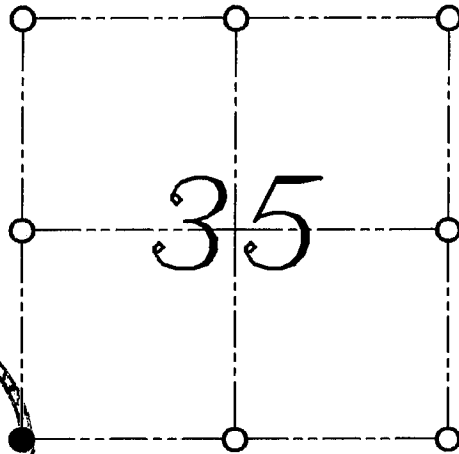
CORNER NUMBER 125

CERTIFICATE:

I, LARRY L. AUSTIN, DO HEREBY CERTIFY THAT ON 25th DAY OF OCTOBER, 1999, I FOUND EVIDENCE OF THE SOUTHWEST CORNER OF SECTION 35, TOWN 6 NORTH, RANGE 1 WEST, OF THE FOURTH PRINCIPAL MERIDIAN, AND I RE-ESTABLISHED SAID CORNER ACCORDING TO THE WISCONSIN STATUTES AS SHOWN AND DESCRIBED HEREON.

DATED THIS 29th DAY OF OCTOBER, 1999

Larry L. Austin
LARRY L. AUSTIN S-1903



● = CORNER LOCATION

SOUTHWEST CORNER OF SECTION 35, T 6 N R 1 W TOWN OF WINGVILLE



SEAL

HISTORY OF ORIGINAL CORNER ESTABLISHMENT:

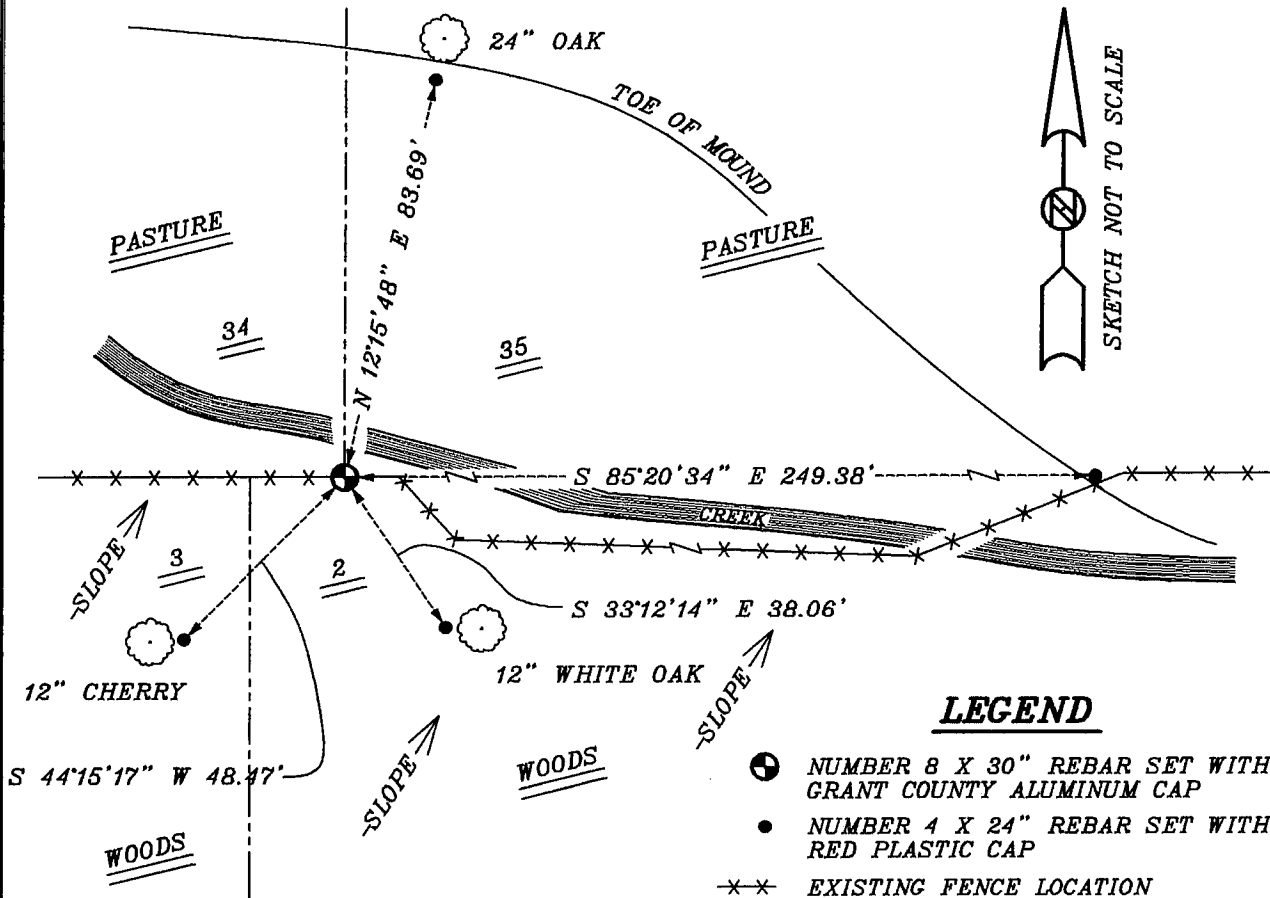
CORNER WAS SET IN 1832 BY SIBLEY.
IN 1858 JOHN EVERETT FOUND THE ORIGINAL CORNER.

DESCRIPTION OF CORNER EVIDENCE FOUND:

I FOUND AN OCCUPIED EAST-WEST FENCE. I HELD THIS LOCATION FOR NORTHING. EASTING WAS SET BY PROPORTIONATE METHODS. VERIFIED THIS LOCATION USING E.D.M. AND G.P.S. METHODS.

DESCRIPTION OF CORNER AND WITNESS MONUMENTS, REFERENCES AND ACCESSORIES USED TO PERPETUATE THE ORIGINAL OR RE-ESTABLISHED LOCATION OF THIS CORNER:
WITNESS TO THE CORNER LOCATION: BOBBY SEDGWICK ; SHELBY BLINDERT

SKETCH:



LEGEND

- NUMBER 8 X 30" REBAR SET WITH GRANT COUNTY ALUMINUM CAP
- NUMBER 4 X 24" REBAR SET WITH RED PLASTIC CAP
- ×× EXISTING FENCE LOCATION