

61123

# U.S. PUBLIC LAND SURVEY MONUMENT RECORD - GRANT COUNTY, WI

Section 36, Town 6 North Range 1 West, Town of Wingville (a)

NOTE: This form is intended and designed to fulfill all requirements of the Wisconsin Administrative Code Chapter A-E 7.08, U.S. Public Land Survey Monument Record (3) (a) (b) (c) (d) (e) (f) (g) (h) (i).

### CERTIFICATE: (i)

I, Aaron J. Austin, Wisconsin Professional Land Surveyor, do hereby certify that the corner location on this record was determined by me and/or under my direct supervision and that this U.S. Public Land Survey Monument Record is correct and complete to the best of my knowledge and belief.

Dated this 20th day of January, 2025.

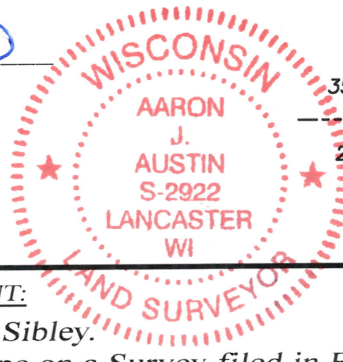
*Aaron J. Austin*

Aaron J. Austin, S-2922



● = CORNER LOCATION

Grant County Coordinates:  
NAD 83 (2011)  
Northing: 558,908.18  
Easting: 889,241.23



### HISTORY OF CORNER ESTABLISHMENT:

Original corner was set in 1832 by Sibley.  
Douglas Malliet found a 2" Iron Pipe on a Survey filed in Book L, Page 352 dated 9-8-1988.  
Michael LaRosa found a 1" Iron Pipe on a Survey filed in Book V, Page 61 dated 4-20-1995.  
Gregg Stroeing found a 1" Iron Pipe and prepared a Survey Monument Record dated 12-10-2020.

### DESCRIPTION OF CORNER EVIDENCE FOUND: (b) (f) (g) (h)

I was unable to locate the 1" Iron Pipe. I set a 1" x 24" Rebar from the distances from the two existing witness corners. I set two witness corners after I verified the Monument's location with G.P.S. and E.D.M. methods.

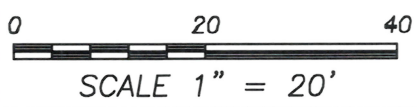
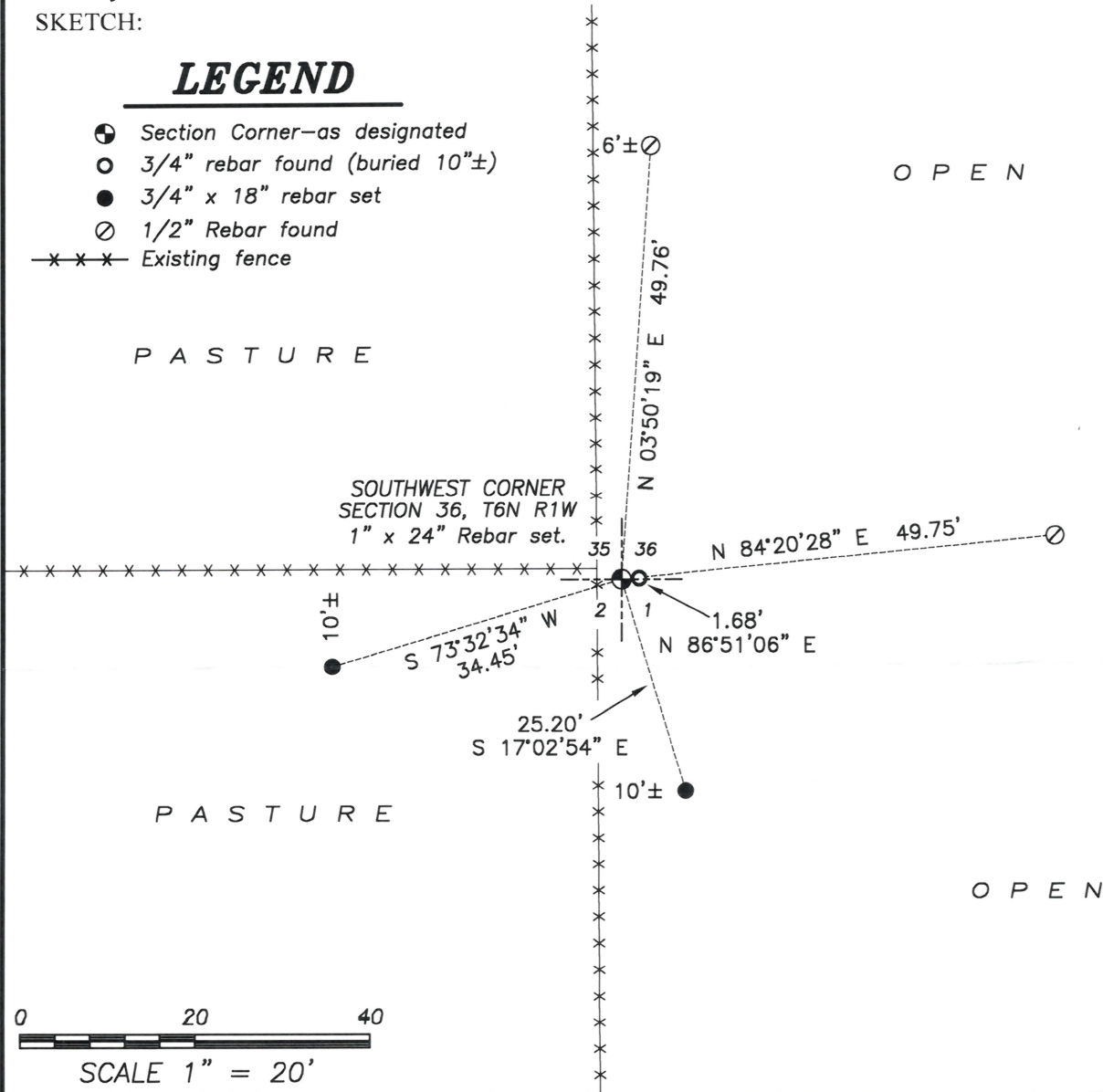
### DESCRIPTION OF CORNER AND WITNESS MONUMENTS, references and accessories used to perpetuate the original or re-established location of this corner. (c) (d) (e)

Witnesses to corner location Shane Austin, Owen Austin.  
Drawn by: Owen Austin.

SKETCH:

## LEGEND

- Section Corner—as designated
- 3/4" rebar found (buried 10"±)
- 3/4" x 18" rebar set
- 1/2" Rebar found
- x-x-x- Existing fence



# GRANT COUNTY U.S. PUBLIC LAND SURVEY MONUMENT RECORD

(A) IDENTIFY THE CORNER AS REFERENCED TO THE U.S. PUBLIC LAND SURVEY SYSTEM

● = CORNER MONUMENT RESTORED

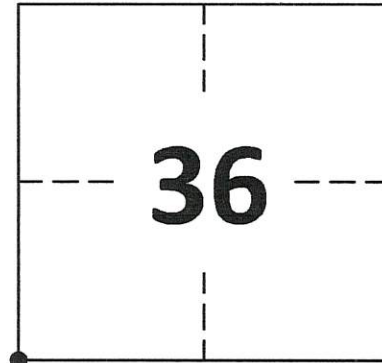
WITNESSES TO CORNER LOCATION:

DAN PETTIS  
CALEB KOLANDER

GEOGRAPHIC COORDINATES  
NAD 83 (2011) ADJUSTMENT

LATITUDE: 42°56'39.0883"  
LONGITUDE: -90°26'53.0041"

WISCONSIN STATE PLANE SOUTH ZONE (US SF):  
NORTHING: 344,451.683  
EASTING: 1,848,531.277



SECTION 36  
TOWNSHIP 6 NORTH, RANGE 1 WEST  
TOWN OF WINGVILLE

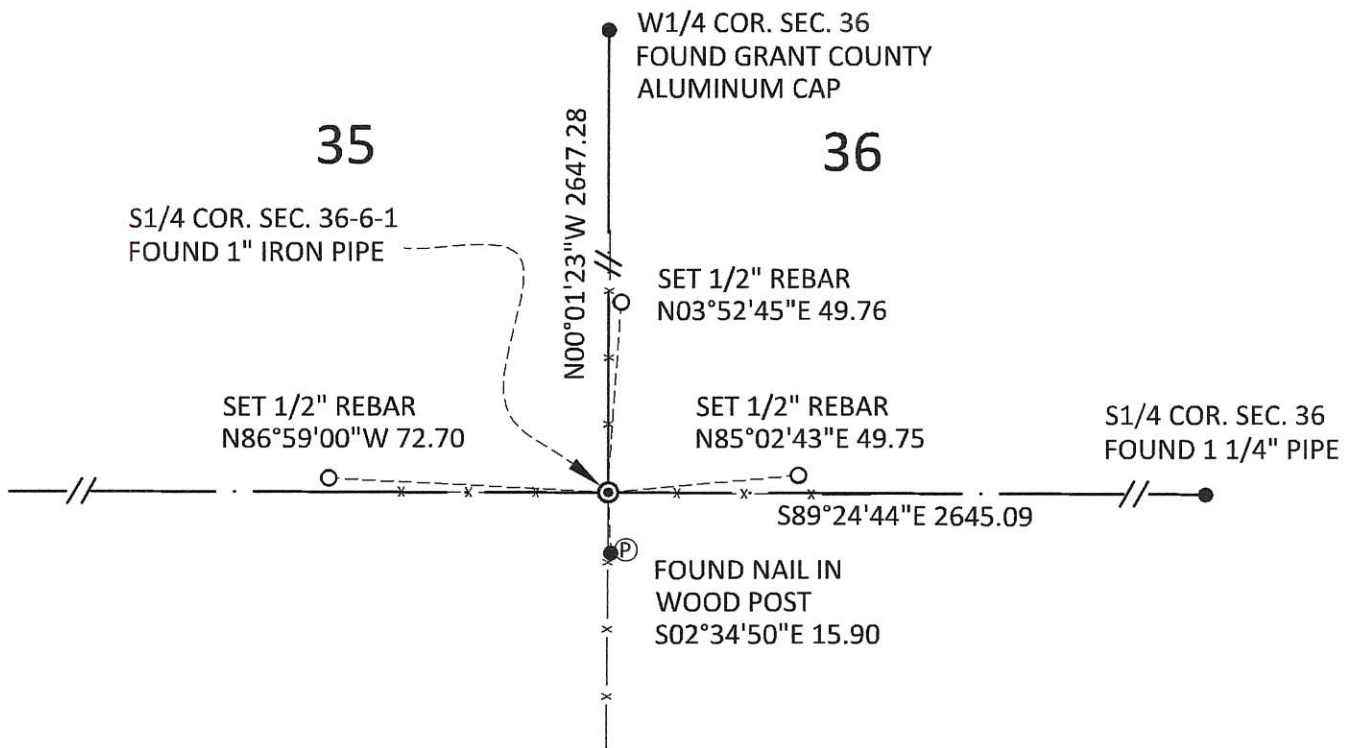
(B) DESCRIBE ANY RECORD EVIDENCE, MONUMENT EVIDENCE, OCCUPATIONAL EVIDENCE, TESTIMONIAL EVIDENCE OR ANY OTHER MATERIAL EVIDENCE YOU CONSIDERED, AND WHETHER THE MONUMENT WAS FOUND OR PLACED.

FOUND 1" IRON PIPE FOUND BY MICHAEL R. LaROSA IN 1995

(C) IN THE PLAN VIEW DRAWING BELOW, PROVIDE REFERENCE TIES TO AT LEAST 4 WITNESS MONUMENTS. WITNESS MONUMENTS SHALL BE MADE OF CONCRETE, NATURAL STONE, IRON, BEARING TREES OR ANY OTHER EQUALLY DURABLE MATERIAL. DEPICT THE RELEVANT MONUMENTS AND REFERENCE TIES WITH SUFFICIENT DETAIL TO ENABLE ACCURATE RELOCATION OF THE CORNER IF THE CORNER MONUMENT IS DISTURBED.

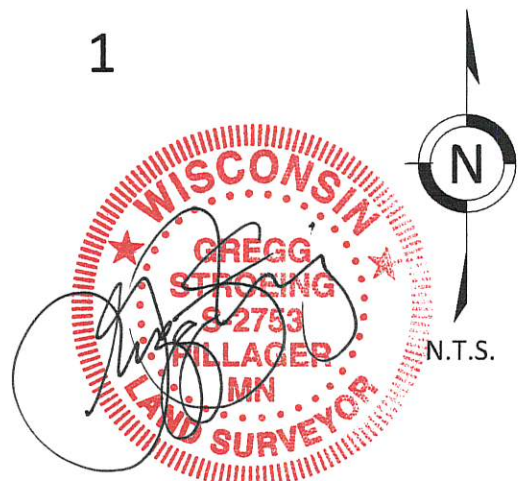
(D) LEGEND

— x — x — x — x — BARBED WIRE FENCE  
Ⓟ POST



2

1



**GRANT COUNTY**  
**U.S. PUBLIC LAND SURVEY MONUMENT RECORD**

(E) DESCRIBE ANY MATERIAL DISCREPANCY BETWEEN THE LOCATION OF THE CORNER AS RESTORED OR REESTABLISHED AND THE LOCATION OF THAT CORNER AS PREVIOUSLY RESTORED OR REESTABLISHED BY DISTANCE AND DIRECTION. SHOW THE DISCREPANCY ON THE PLAN VIEW DRAWING UNDER (D), ABOVE. SHOW THE DISTANCES BETWEEN THE CORNER AS PREVIOUSLY RESTORED OR REESTABLISHED AND (1) THE CORNER AS RESTORED OR REESTABLISHED, AND (2) TO AT LEAST 2 OF THE WITNESS MONUMENTS SHOWN ON THE DRAWING IN (D) ABOVE.

N/A

(F) WAS THE CORNER RESTORED THROUGH ACCEPTANCE OF (1) AN OBLITERATED EVIDENCE LOCATION, OR (2) A FOUND PERPETUATED LOCATION?

FOUND AT PERPETUATED LOCATION

(G&H) WAS THE CORNER REESTABLISHED THROUGH LOST CORNER PROPORTIONATE METHODS? IF SO, SHOW THE METHOD, INCLUDING THE DIRECTIONS AND DISTANCES TO OTHER PUBLIC LAND SURVEY CORNERS USED AS EVIDENCE OR USED FOR PROPORTIONING IN DETERMINING THE CORNER LOCATION.

N/A

1. CORNER HISTORY: ORIGINAL POST SET IN 1832 BY SYLVESTER SIBLEY.
2. IN 1995, BOOK V, PAGE 601, MICHAEL R. LaROSA, ON A PLAT OF SURVEY, FOUND A 1" IRON PIPE ON 4 WAY FENCE INTERSECTION AND ACCEPTED THE LOCATION AS IT FIT WELL WITH OTHER OCCUPIED CORNERS. HE RECORDED A SURVEY MONUMENT RECORD.
3. IN 2020 GREGG STROEING FOUND THE 1" IRON PIPE AND ACCEPTED THIS POSITION AS THE PERPETUATED MONUMENT FOUND BY MICHAEL R. LaROSA IN 1995. UPDATED AND SET NEW TIES AS SHOWN IN PART C

(I) I, GREGG STROEING P.L.S. - 2753, CERTIFY THAT THE CORNER LOCATION SHOWN ON THIS RECORD WAS DETERMINED BY ME OR UNDER MY DIRECTION AND CONTROL AND THAT THIS U.S. PUBLIC LAND SURVEY MONUMENT RECORD IS CORRECT AND COMPLETE TO THE BEST OF MY KNOWLEDGE AND BELIEF.

SIGNATURE

12/10/2020

DATE



CORNER NO. 123