

61120

FOR GRANT COUNTY, WISCONSIN U.S. PUBLIC LAND SURVEY MONUMENT RECORD

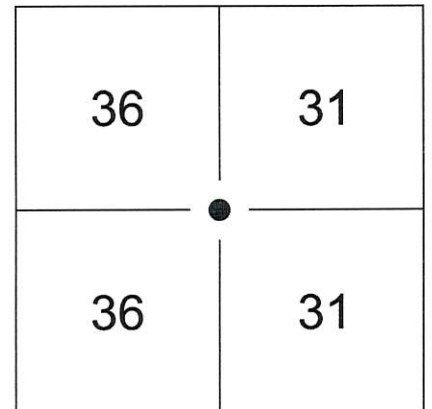
Note: This form is intended and designed to fulfill all requirements of Wisconsin Administrative Code, Chapter AE-7.08, U.S. Public Land Survey Monument Record (3)(a)(b)(c)(d)(e)(f)(g)(h)(i). Use additional sheets if necessary.

a) The Section corner common to Section 36, Township 6 North, Range 1 West, 4th Principal Meridian and Section 31, Township 6 North, Range 1 East, 4th Principal Meridian

Rectangular Coordinate System: Wisconsin State Plane Coordinate System, South Zone

Grid Coordinates: Y: 1,853,821.50' X: 347,071.00'

Horizontal Datum: NAD83(2011)

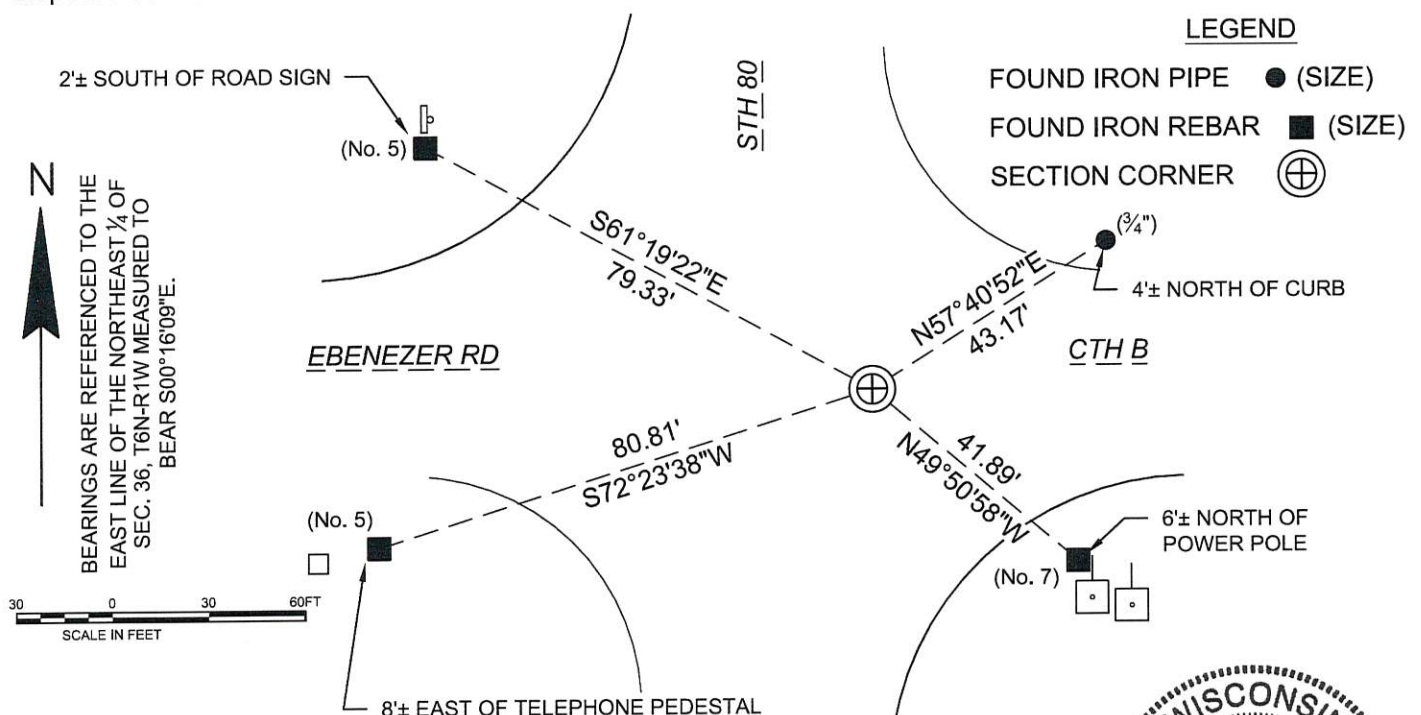


(b)(f)(g)(h) Description of monument found at this corner and if it was accepted, state all evidence (material, testimonial, occupational, plats records, other monuments) used as a basis for accepting. If not accepted or nothing was found, state evidence used as basis for establishing location and what was set. If re-established through lost corner proportionate methods, indicate all monuments, distances and directions used.

June 21, 2010 - Larry L. Austin found railroad spike before road construction, set new monument after construction and established witness monuments.

December 20, 2017 - Ayres Associates found a cotton gin spike and all four witness monuments. Accepted the cotton gin spike as the corner location.

(c)(d)(e) Plan view of corner with ties to at least four (4) witness monuments. If in disagreement with previously established corner, show the distances between the two corners and also indicate ties to disputed corner.



(I) Certify that the corner location on this record was determined by me or under my direction and control and that this U.S. Public Land Survey Monument Record is correct and complete to the best of my knowledge and belief.



Christopher R. Badtke 1-8-2018 Date
Christopher R. Badtke, WI Professional Land Surveyor S-3150

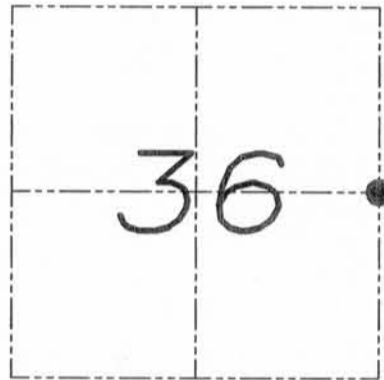
U.S. PUBLIC LAND SURVEY MONUMENT RECORD

Section 36, Town 6 North Range 1 West, Town of Wingville, Grant County, Wisconsin

CERTIFICATE

I, Larry L. Austin, do hereby certify that the corner location on this record was determined by me and/or under my direct supervision and that this U.S. public land survey monument record is correct and complete to the best of my knowledge and belief.

Larry L. Austin
 Larry L. Austin, S-1903



● = CORNER LOCATION

HISTORY OF CORNER

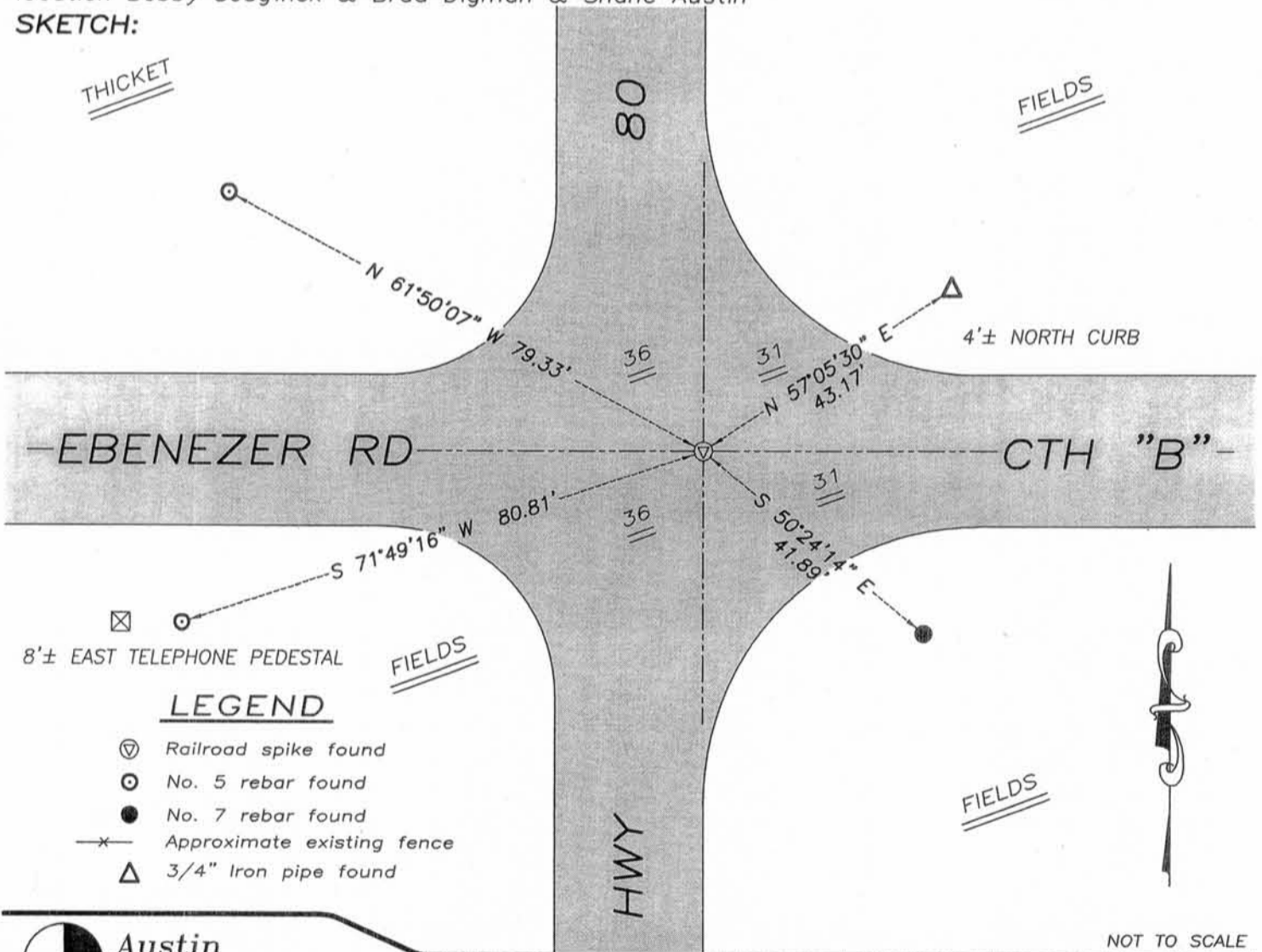
Corner was originally set in 1832 by Lyon. In 1986 Halverson set and tied out the corner. No other record of the corner was found.

CORNER EVIDENCE FOUND

I measured the monument prior to road construction. I reset a monument after road construction and tied as shown below. Verified this location using EDM & GPS methods.

DESCRIPTION OF CORNER AND WITNESS MONUMENTS, references and accessories used to perpetuate the original or re-established location of this corner. Witnesses to monument location Bobby Sedgwick & Brad Digman & Shane Austin

SKETCH:



LEGEND

- ⊙ Railroad spike found
- ⊙ No. 5 rebar found
- No. 7 rebar found
- x- Approximate existing fence
- △ 3/4" Iron pipe found



Austin Engineering LLC

4211 HWY 81 E, LANCASTER, WI 53813
 PHONE 608-723-6363 FAX 608-723-6702

JOB NUMBER 08S249-WIDOT
 FIELDBOOK: TDSR, 2810-B
 G:\GRANTDOT\T6NR1W
 H:\TIE\T6NR1W\120

DRAWN BY: SW AUSTIN
 APPROVED: LL AUSTIN

NOT TO SCALE

120

JUN 28 2010

U.S. PUBLIC LAND SURVEY MONUMENT RECORD

Wisconsin Department of Transportation

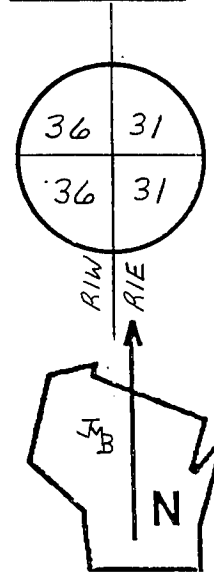
DT1291 96 (Replaces ED716)

T. 6 N. - R. 1 E.
 4th Principal Meridian
 Corner 114

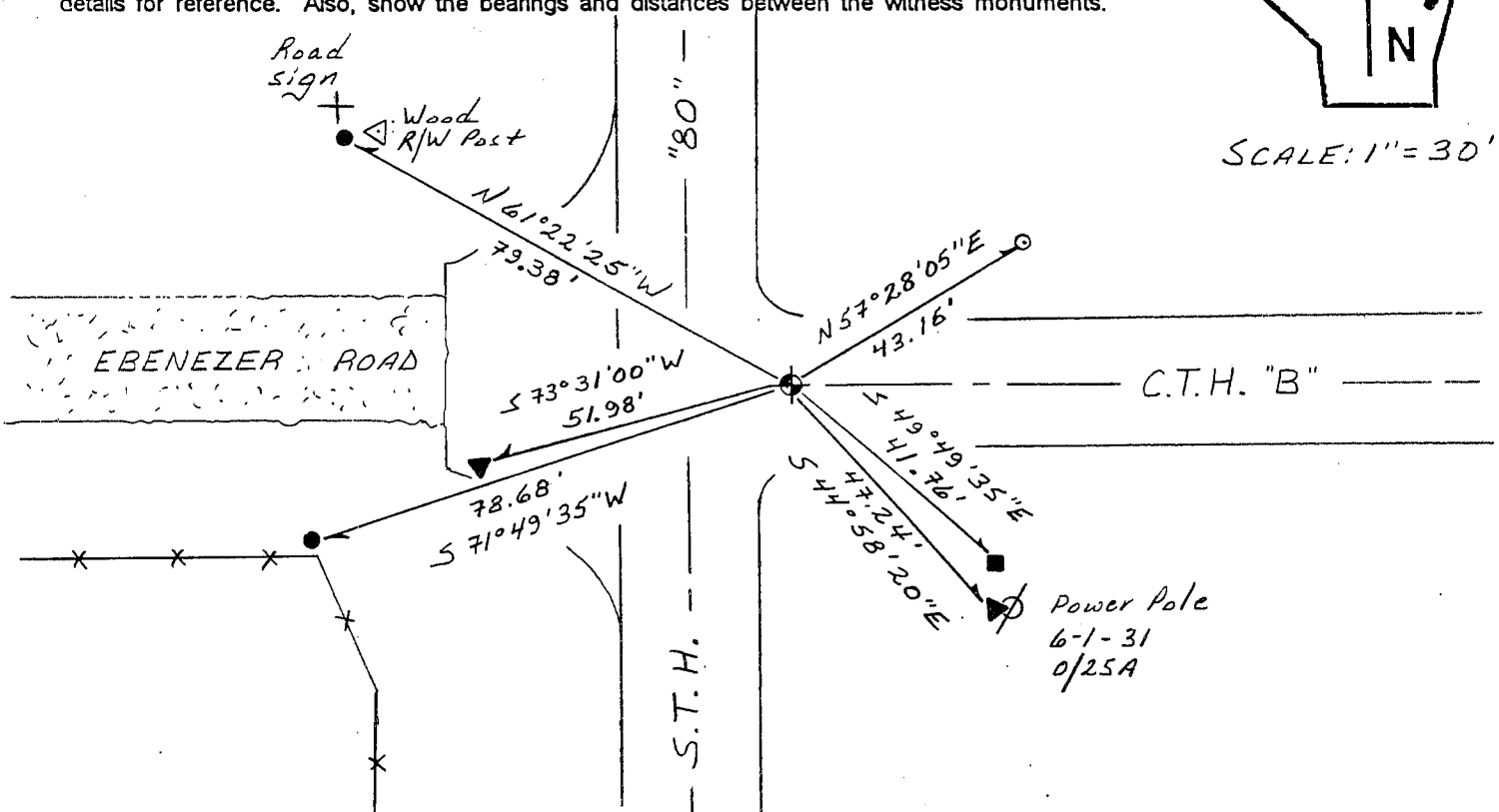
County Name <u>Iowa</u>		Name of Township / City / Village (Circle One) <u>Eden</u>	
Surveyor Name <u>Bowden Surveying, Ltd.</u>			
Address, City, State, Zip Code <u>619 W. Merrimac Street, Dodgeville, WI 53533</u>			
X (Easting) <u>299448.69'</u>	Y (Northing) <u>150483.23'</u>	Latitude	Longitude
Project ID <u>5035-00-01</u>		Coordinate ID <u>6-1-114</u>	

HORIZONTAL DATUM		UNITS		COORDINATE SYSTEM	
<input type="checkbox"/> NAD 27	<input checked="" type="checkbox"/> NAD 83 (91)	<input checked="" type="checkbox"/> English	<input type="checkbox"/> Metric	<input type="checkbox"/> Geodetic	<input type="checkbox"/> State Plane _____ Zone
				<input checked="" type="checkbox"/> County <u>Iowa</u>	

Location Diagram, showing corner identification name, bearing and distance references to at least four witness monuments, fence or occupational lines, centerlines of roads, and other site details for reference. Also, show the bearings and distances between the witness monuments.



SCALE: 1" = 30'



Indicate fd. = found or pl. = placed in the diagram above
 Bearings used in the location sketch and basis for monument location are Iowa C&G Coordinates.
 Monumentation Legend / Description of Corner and Witness Monuments:

- Aluminum monument - found
- 3/4" dia. iron pipe - found
- ground rod - found
- railroad spike - found
- #5 (5/8" dia.) x 24" rebar - set

If applicable, show any discrepancy between the location of the corner as restored or re-established and the location of that corner as previously restored or re-established by bearing and distance. Also, show the bearings and distances between the previous corner and at least two of the witness monuments. See reverse.

Basis for Monument Location

1. Describe any record evidence, monument evidence, occupational evidence or any other material evidence including traverse measurements that you considered, and whether the monument was found or placed. Explain below, be specific, and attach a separate sheet if necessary.
2. Was the corner.
 - a) found perpetuated,
 - b) restored through acceptance of obliterated evidence,
 - c) relocated by witness testimony, or
 - d) accepted as a remonumented corner of record and maintained with additional monumentation?
3. Was the corner re-established through lost corner proportionate methods? If so, show the method, including the directions and distances to other public land survey corners used as evidence or used in determining the corner location.

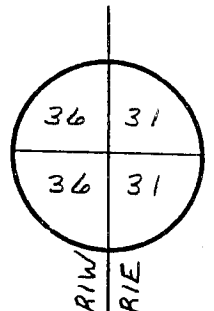
Please Type or Print

1. Original government survey. John M. Halverson set a railroad spike and prepared a tie sheet for Grant County dated 5/2/1986. I found and accepted an aluminum monument at Halverson's location.

2. d)

3. N/A

T. 6 N.-R. 1 E.
4th Principal Meridian
Corner 114



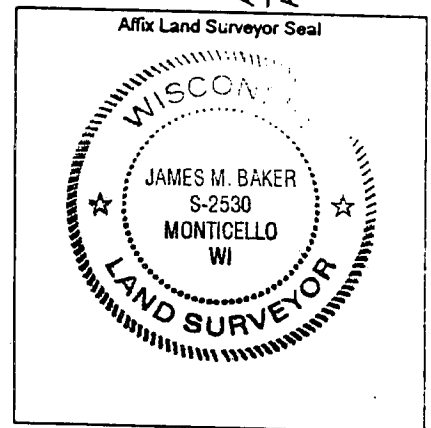
Certification I, James M. Baker

(type or print name) certify that the corner location shown on this record was determined by me or under my direction and control and that this U.S. Public Land Survey Monument Record is correct and complete to the best of my knowledge and belief, in accordance with Chapter A-E 7.08 of the Wisconsin Administrative Code.

Section Control Data Sheets have been filed in the County Surveyor's office, showing final measurements by direction and distance between all remonumented corners. Section Control Information is referenced by the following:

Date	Project ID	Sheet(s)

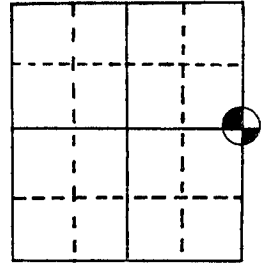
X James M. Baker, RLS-2530 4/18/2005
(Registered Land Surveyor Signature and Number) (Date)



U.S. PUBLIC LAND SURVEY MONUMENT RECORD

Note: This form is intended and designed to fulfill all requirements of Wisconsin Administrative Code, Chapter A-E 5.02, U.S. Public Land Survey Monument Record (3) (a) (b) (c) (d) (e) (f) (g) (h) (i). An additional sheet may be added if necessary to conform with said requirements.

(a) Corner location: Township 6 North
 Range 1 ~~East~~ West
 Town/~~City/Village~~ Wingville
 County Grant



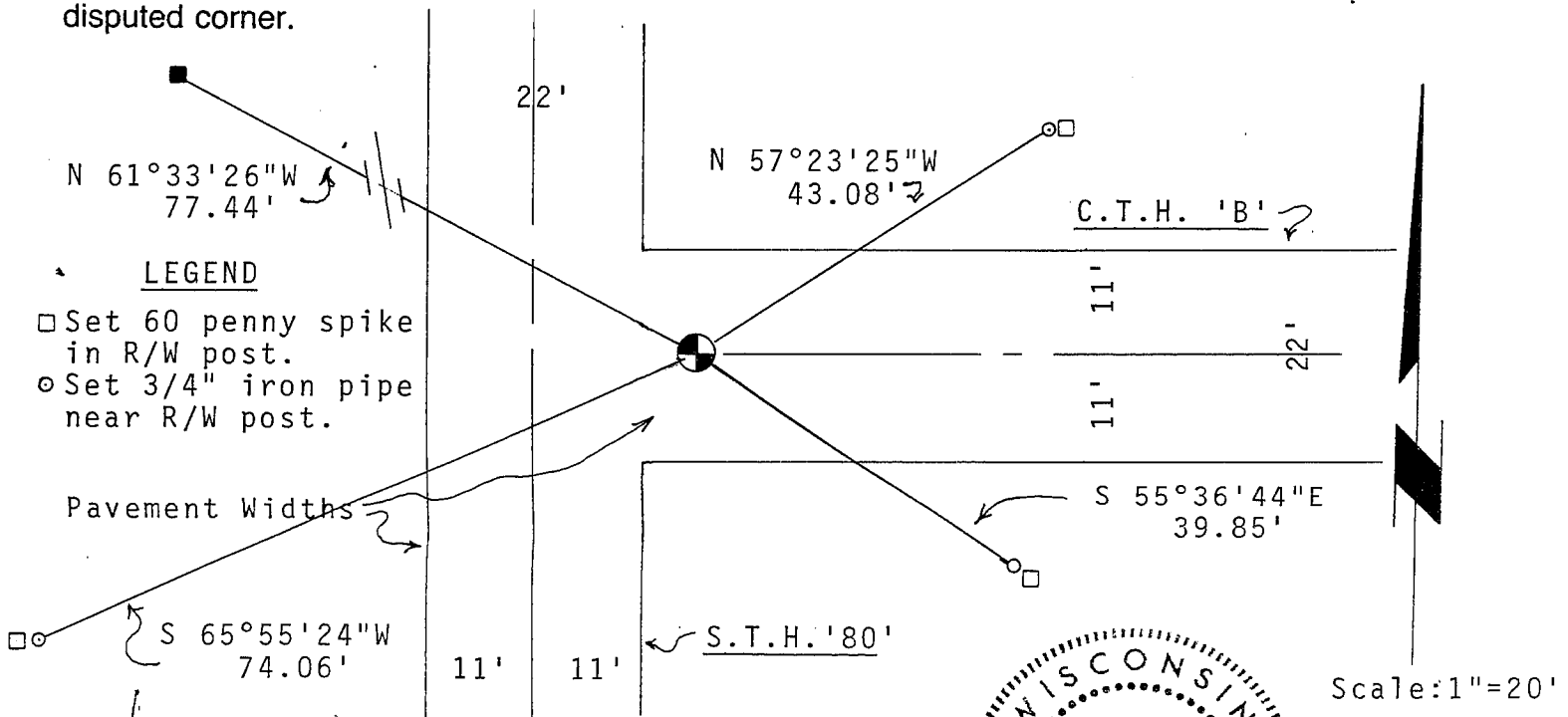
Section 36

(b) (f) (g) (h) Description of monument found at this corner and if it was accepted, state all evidence (material, testimonial, occupational, plats, records, other monuments) used as a basis for accepting. If not accepted or if nothing was found, state evidence used as basis for establishing location. If reestablished through lost corner proportionate methods, indicate all monuments, distances and directions used to establish.

$\frac{1}{4}$

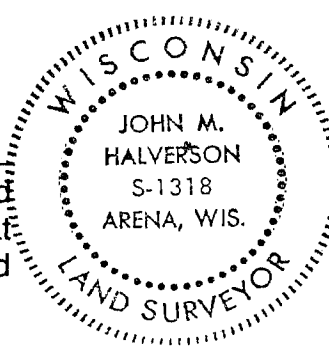
No evidence of Section Corner found as shown on S.T.H. '80' plans. Project No. T0510 (1)&(2). Set R/R spike 17 feet east of centerline.

(c) (d) (e) Plan view of corner with ties to at least 4 witness monuments. If in disagreement with previously established corner, show the distances between the two corners and also indicate the ties to the disputed corner.



(i) I, John M. Halverson

(type or print name) certify that the corner location on this record was determined by me or under my direction and control and that this U.S. Public Land Survey Monument Record is correct and complete to the best of my knowledge and belief.



Affix seal here

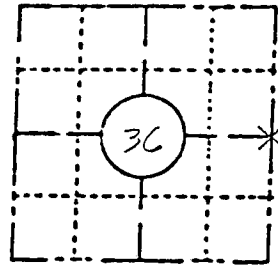
John M. Halverson Signature 5/2/86 Date

120

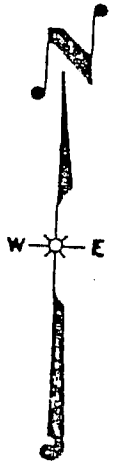
FIELD SURVEY NOTES
PRESERVATION OF LANDMARKS
 (Pursuant to Section 59.635(7) Wisconsin Statutes)

Highway Commission of Wisconsin
 Form E-D-707-65

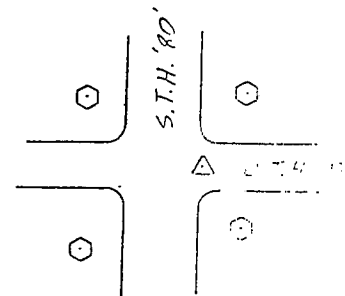
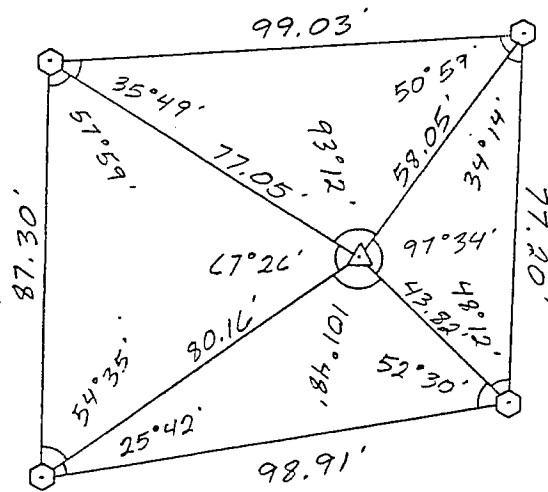
COUNTY GRANT		
TOWN WINGVILLE		
HIGHWAY S.T.H. '80' @ C.T.H. 'B'		
SECTION 36	TOWNSHIP TCN	RANGE R1W
TYPE OF LANDMARK SECTION CORNER MONUMENT		



LOCATION SKETCH
 (Location of landmark indicated by "x")



This space for copy of field notes or ties to the above described landmarks



5035-00-71, 5996-02-11 &
 0022-74-00
 Platteville - Montfort Road
 Water Street, City of Platteville
 Structures B-22-7, 15
 STH 80, Grant & Iowa Counties
 Payne & Dolen, Inc.

SCALE
 1" = 40'

- = REFERENCE MONUMENT
- ⌋ = RIGHT OF WAY POST
- ⌋ = WITNESS POST
- △ = SECTION CORNER LOCATION

COUNTY CLERK'S OFFICE	
COUNTY OF	WISCONSIN 55
DATE RECEIVED FOR RECORD	DATE COPY SENT TO COUNTY SURVEYOR
SIGNATURE OF COUNTY CLERK	