

U.S. PUBLIC LAND SURVEY MONUMENT RECORD

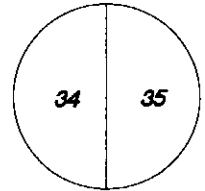
Wisconsin Department of Transportation

DT1291 2/2006

61118

County Name Grant		Name of <input checked="" type="checkbox"/> Township, <input type="checkbox"/> City, <input type="checkbox"/> Village Wingville	
Surveyor Name Michael T. Schinke			
Address, City, State, ZIP Code 7501 College Blvd Suite 101 Overland Park, KS 66210			
Y (Northing) 347180.553	X (Easting) 1843258.624	Latitude	Longitude
Project ID 0020543.00		Coordinate ID	

T. 6 N. - R. 1 W
4th Principal Meridian
Corner **18**

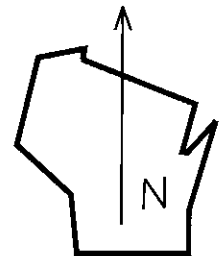


HORIZONTAL DATUM UNITS

- NAD 27
- NAD 83 (1991)
- NAD 83 (1997)
- Other - NAD 83 (2011)
- English
- Metric

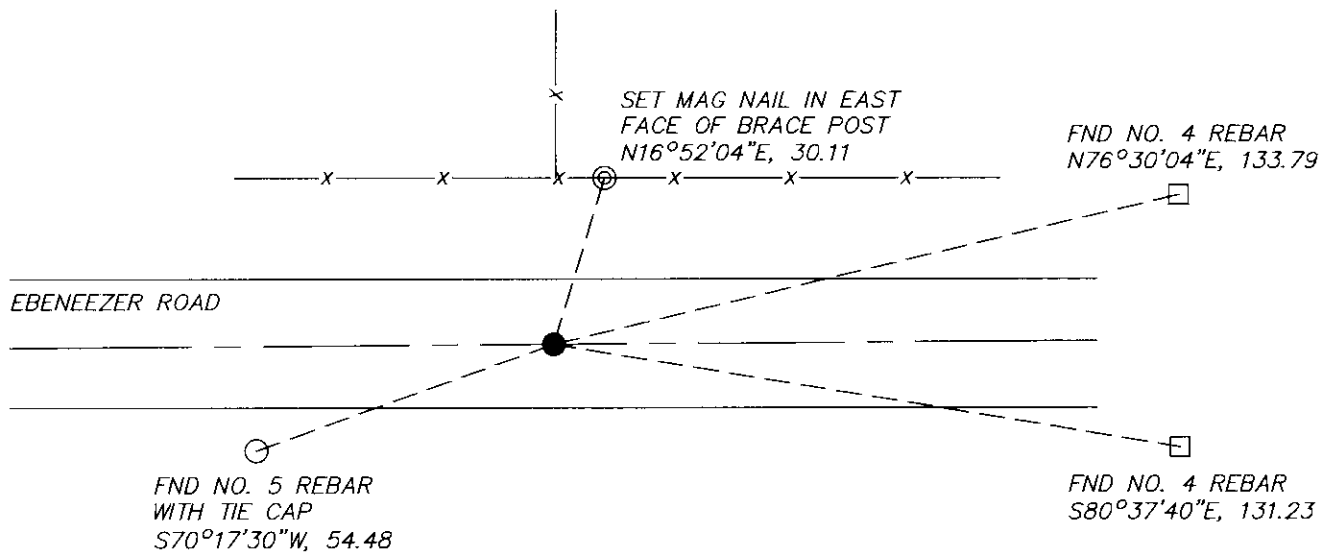
COORDINATE SYSTEM

- Geodetic
- State Plane South Zone
- County



Location Diagram, showing corner identification name, bearing and distance references to at least four witness monuments, fence or occupational lines, centerlines of roads, and other site details for reference. Also, show the bearings and distances between the witness monuments.

East Quarter Corner Section 34, Township 6 North, Range 1 West, Grant County, Wisconsin



Indicate fd. = found or pl. = placed in the diagram below
Bearings used in the location sketch and basis for monument location are assumed, unless as noted.
Monumentation Legend / Description of Corner and Witness Monuments.

- FND NO. 5 REBAR
- FND NO. 4 REBAR
- ⊙ SET MAG NAIL
- FND 3" GRANT COUNTY ALUMINUM CAPPED MONUMENT

If applicable, show any discrepancy between the location of the corner as restored or re-established and the location of that corner as previously restored or re-established by bearing and distance. Also, show the bearings and distances between the previous corner and at least two of the witness monuments.

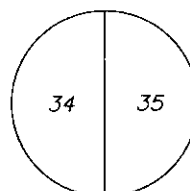
Basis for Monument Location

1. Describe any record evidence, monument evidence, occupational evidence or any other material evidence including traverse measurements that you considered, and whether the monument was found or placed. Explain below, be specific, and attach a separate sheet if necessary.

2. Was the corner.
 - a. found perpetuate
 - b. restored through acceptance of obliterated evidence.
 - c. relocated by witness testimony, or
 - d. accepted as a re-monumented corner of record and maintained with additional monumentation?

3. Was the corner re-established through lost corner proportionate methods? If so, show the method, including the directions and distances to other public land survey corners used as evidence or used in determining the corner location.
 1. Westwood Professional Services searched the area and found a rebar with 3" Grant County Aluminum cap 3 of 4 ties per 1999 Austin corner record. Accepting as corner location and set 1 additional tie.
 2. D
 3. NO

T. 6 N. R. 1 W.
4 th Principal Meridian
Corner 118



Certification

I, Michael T. Schinke, certify that the corner location shown on the record was determined by me or under my direction and control and that the U.S. Public Land Survey Monument Record is correct and complete to the best of my knowledge and belief, in accordance with Chapter A-E 7.08 of the Wisconsin Administration Code.

Section Control Data Sheets have been filed in the County Surveyor's office, showing final measurements by direction and distance between all re-monumented corners. Section Control information is referenced by the following.

Date	Project ID 0020543.00	Sheet(s) 2 of 2
------	--------------------------	--------------------



x Michael T Schinke

(Registered Land Surveyor Signature and Number)

04/23/2020

Date

GRANT COUNTY CERTIFIED LAND CORNER

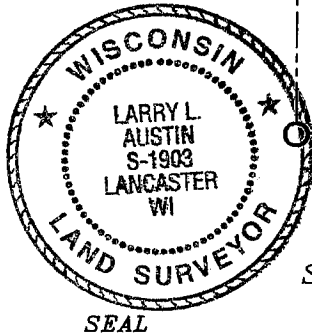
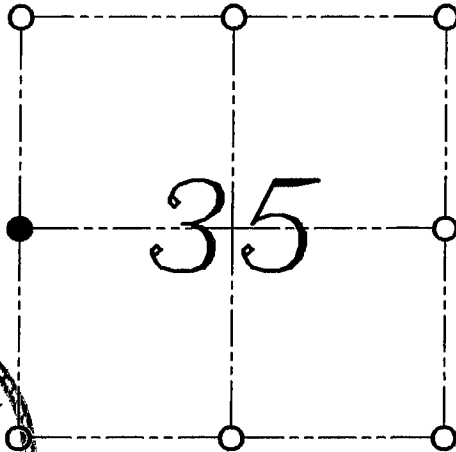
CORNER NUMBER 118

CERTIFICATE:

I, LARRY L. AUSTIN, DO HEREBY CERTIFY THAT ON 29th DAY OF OCTOBER, 1999, I FOUND EVIDENCE OF THE WEST 1/4 CORNER OF SECTION 35, TOWN 6 NORTH, RANGE 1 WEST, OF THE FOURTH PRINCIPAL MERIDIAN, AND I RE-ESTABLISHED SAID CORNER ACCORDING TO THE WISCONSIN STATUTES AS SHOWN AND DESCRIBED HEREON.

DATED THIS 29th DAY OF OCTOBER, 1999

Larry L. Austin
LARRY L. AUSTIN S-1903



● = CORNER LOCATION
WEST 1/4 CORNER OF
SECTION 35, T 6 N R 1 W
TOWN OF WINGVILLE

HISTORY OF ORIGINAL CORNER ESTABLISHMENT:

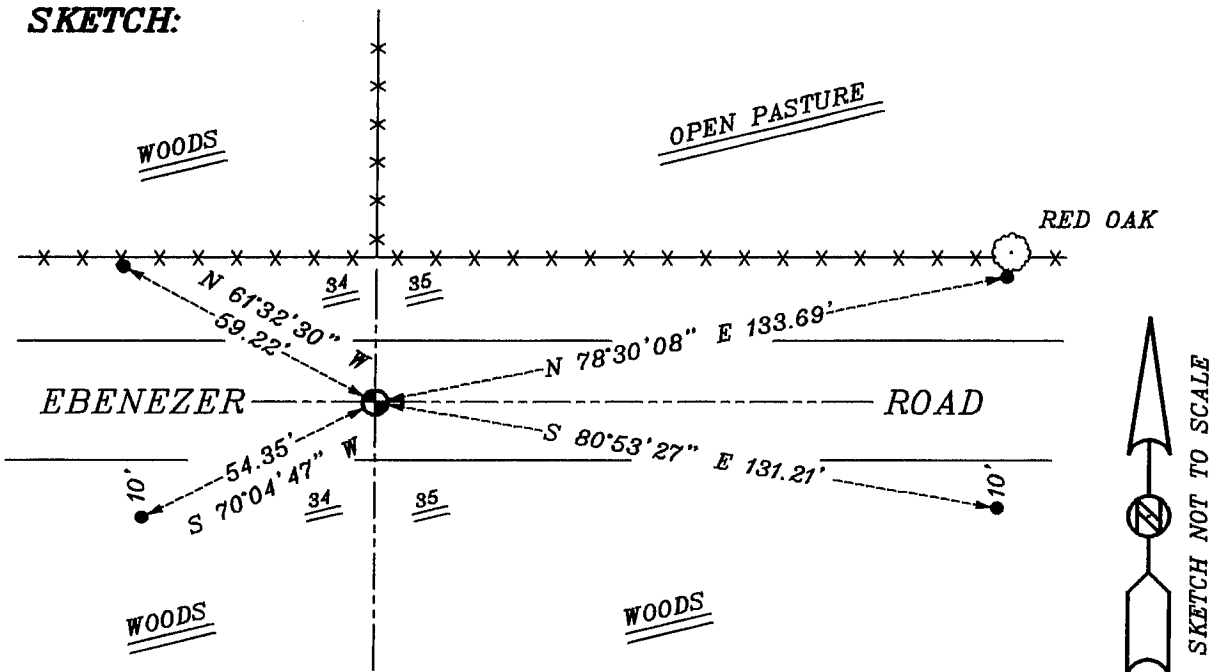
CORNER WAS SET IN 1833 BY SIBLEY. IN 1858 JOHN EVERETT FOUND THE ORIGINAL CORNER. IN 1877 JOEL BARBER FOUND ANCIENT CORNER AND REMAINS OF BEARING TREES.

DESCRIPTION OF CORNER EVIDENCE FOUND:

I FOUND AN EXISTING ROAD EAST-WEST AND A FENCE NORTH. I ACCEPTED THIS LOCATION AFTER AN E.D.M. AND G.P.S. TRAVERSE OF THE AREA.

DESCRIPTION OF CORNER AND WITNESS MONUMENTS, REFERENCES AND ACCESSORIES USED TO PERPETUATE THE ORIGINAL OR RE-ESTABLISHED LOCATION OF THIS CORNER:
WITNESS TO THE CORNER LOCATION: BOBBY SEDGWICK ; SHELBY BLINDERT

SKETCH:



LEGEND

- NUMBER 8 X 30" REBAR SET WITH GRANT COUNTY ALUMINUM CAP
- NUMBER 4 X 24" REBAR SET WITH RED PLASTIC CAP
- **-** EXISTING FENCE LOCATION