

U.S. PUBLIC LAND SURVEY MONUMENT RECORD

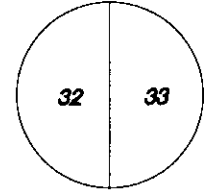
Wisconsin Department of Transportation

DT1291 2/2006

6116

County Name Grant		Name of <input checked="" type="checkbox"/> Township, <input type="checkbox"/> City, <input type="checkbox"/> Village Wingville	
Surveyor Name Michael T. Schinke			
Address, City, State, ZIP Code 7501 College Blvd Suite 101 Overland Park, KS 66210			
Y (Northing) 347289.209	X (Easting) 1832650.554	Latitude	Longitude
Project ID 0020543.00		Coordinate ID	

T. **6** N. - R. **1** W
4 th Principal Meridian
Corner **116**

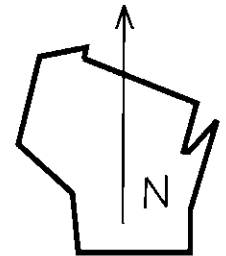


HORIZONTAL DATUM UNITS

- NAD 27
- NAD 83 (1991)
- NAD 83 (1997)
- Other - NAD 83 (2011)
- English
- Metric

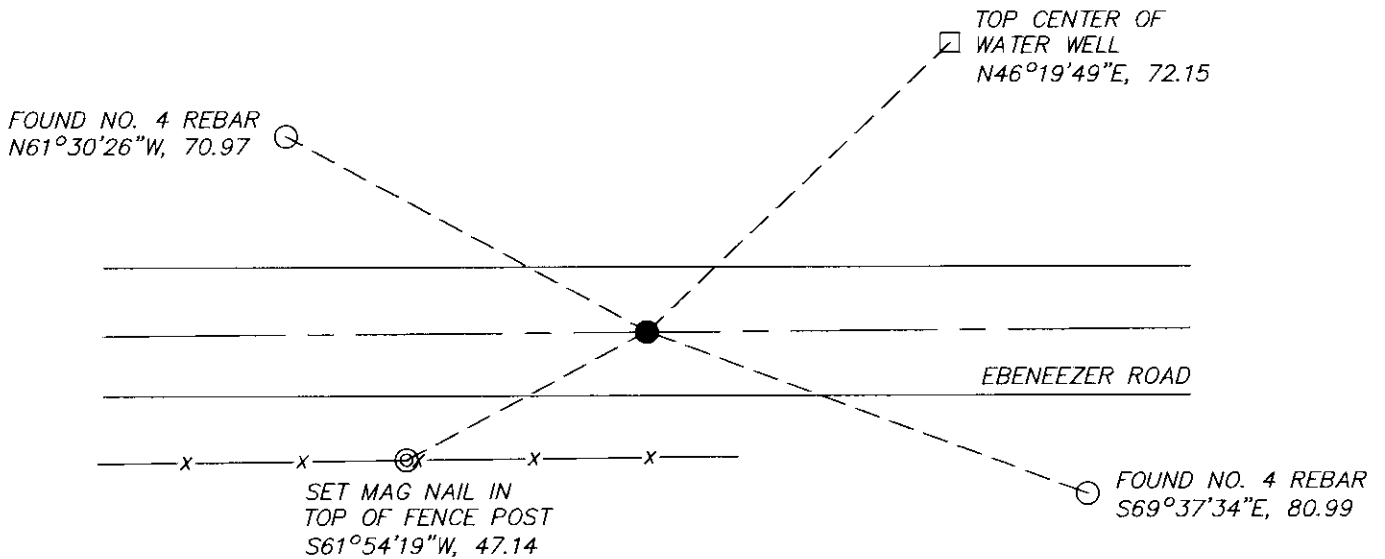
COORDINATE SYSTEM

- Geodetic
- State Plane South Zone
- County



Location Diagram, showing corner identification name, bearing and distance references to at least four witness monuments, fence or occupational lines, centerlines of roads, and other site details for reference. Also, show the bearings and distances between the witness monuments.

East Quarter Corner Section 32, Township 6 North, Range 1 West, Grant County, Wisconsin



Indicate *fd.* = found or *pl.* = placed in the diagram below
Bearings used in the location sketch and basis for monument location are assumed, unless as noted.
Monumentation Legend / Description of Corner and Witness Monuments.

- FND NO. 4 REBAR
- SET MAG NAIL
- WATER WELL
- FND NO. 6 REBAR, 0.2' DOWN

If applicable, show any discrepancy between the location of the corner as restored or re-established and the location of that corner as previously restored or re-established by bearing and distance. Also, show the bearings and distances between the previous corner and at least two of the witness monuments.

Basis for Monument Location

1. Describe any record evidence, monument evidence, occupational evidence or any other material evidence including traverse measurements that you considered, and whether the monument was found or placed. Explain below, be specific, and attach a separate sheet if necessary.

2. Was the corner.
 - a. found perpetuate
 - b. restored through acceptance of obliterated evidence.
 - c. relocated by witness testimony, or
 - d. accepted as a re-monumented corner of record and maintained with additional monumentation?

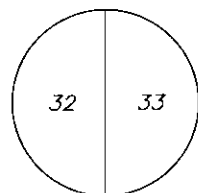
3. Was the corner re-established through lost corner proportionate methods? If so, show the method, including the directions and distances to other public land survey corners used as evidence or used in determining the corner location.

1. Westwood Professional Services searched the area and found a #6 rebar and 2 of 3 ties per 1999 Buck tie sheet. Accepting as corner location and set 2 additional ties.

2. D

3. NO

T. 6 N. R. 1 W.
4th Principal Meridian
Corner 116

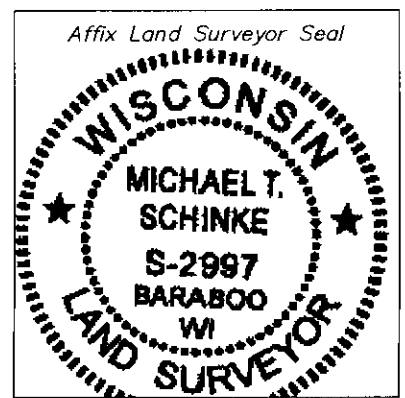


Certification

I, Michael T. Schinke, certify that the corner location shown on the record was determined by me or under my direction and control and that the U.S. Public Land Survey Monument Record is correct and complete to the best of my knowledge and belief, in accordance with Chapter A-E 7.08 of the Wisconsin Administration Code.

Section Control Data Sheets have been filed in the County Surveyor's office, showing final measurements by direction and distance between all re-monumented corners. Section Control information is referenced by the following.

Date	Project ID	Sheet(s)
	0020543.00	2 of 2



x Michael T Schinke

(Registered Land Surveyor Signature and Number)

04/23/2020

Date

Survey Monument Record

CORNER NO. _____

SECTION 32

TOWN 6 NORTH

RANGE 1 WEST

TYPE OF MONUMENT 3/4" X 24" IRON ROD

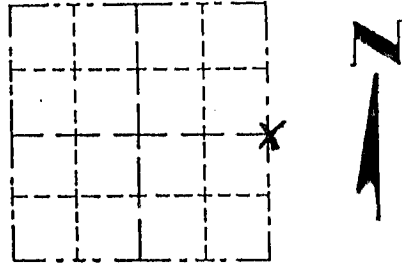
STATE PLANE COORDINATES: N _____
E _____

ELEVATION — M.S.L. DATUM: _____

THETA ANGLE: _____

FIELD BOOK: _____

PAGE _____



LOCATION
(Indicated by "X")

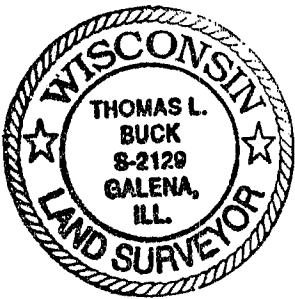
- FOUND PERPETUATED LOCATION
- OBLITERATED EVIDENCE LOCATION
- LOST CORNER (RESTORED BY PROPORTIONATE METHODS)

BASIS FOR MONUMENT LOCATION

(Use reverse side if necessary)

Show info such as: History of corner, with reference to Vol. and pg., dates, surveyor; exact description of monument replaced; if location computed, by taped or EDM traverse; landowner, remarks, etc.

I FOUND NO HISTORY OF THIS CORNER SINCE THE ORIGINAL GOVERNMENT SURVEY. I SET THIS CORNER BY USING EXISTING PHYSICAL EVIDENCE AND PROPORTIONATE MEASUREMENTS FROM AN EDM TRAVERSE AND LOCATION SURVEY OF SECTIONS 32 AND 33.



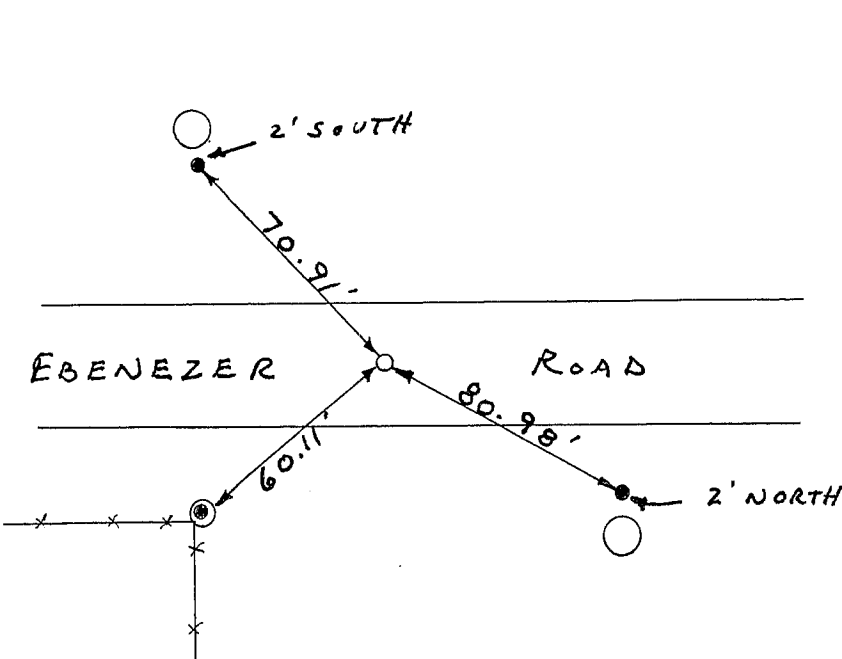
CERTIFIED CORRECT TO THE BEST
OF MY KNOWLEDGE AND BELIEF

Thomas Buck
Registered Land Surveyor

DATE: 7/30/99

TIE SKETCH

Show at least three (3) ties and monument



- = EXISTING POWER POLE
- ⊙ = P.K. WITH SHINER ON TOP OF POST
- = 3/4" X 24" IRON ROD
- = 1/2" IRON ROD
- x—x—x— = EXISTING FENCE