

**U.S. PUBLIC LAND SURVEY MONUMENT RECORD**

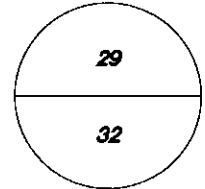
Wisconsin Department of Transportation

DT1291 2/2006

61110

County Name <b>Grant</b>		Name of <input checked="" type="checkbox"/> Township, <input type="checkbox"/> City, <input type="checkbox"/> Village <b>Wingville</b>	
Surveyor Name <b>Michael T. Schinke</b>			
Address, City, State, ZIP Code <b>7501 College Blvd Suite 101 Overland Park, KS 66210</b>			
Y (Northing) <b>349965.100</b>	X (Easting) <b>1829993.051</b>	Latitude	Longitude
Project ID <b>0020543.00</b>		Coordinate ID	

T. 6 N. - R. 1 W  
4 th Principal Meridian  
Corner **110**

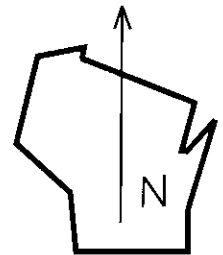


**HORIZONTAL DATUM UNITS**

- NAD 27
- NAD 83 (1991)
- NAD 83 (1997)
- Other - NAD 83 (2011)
- English
- Metric

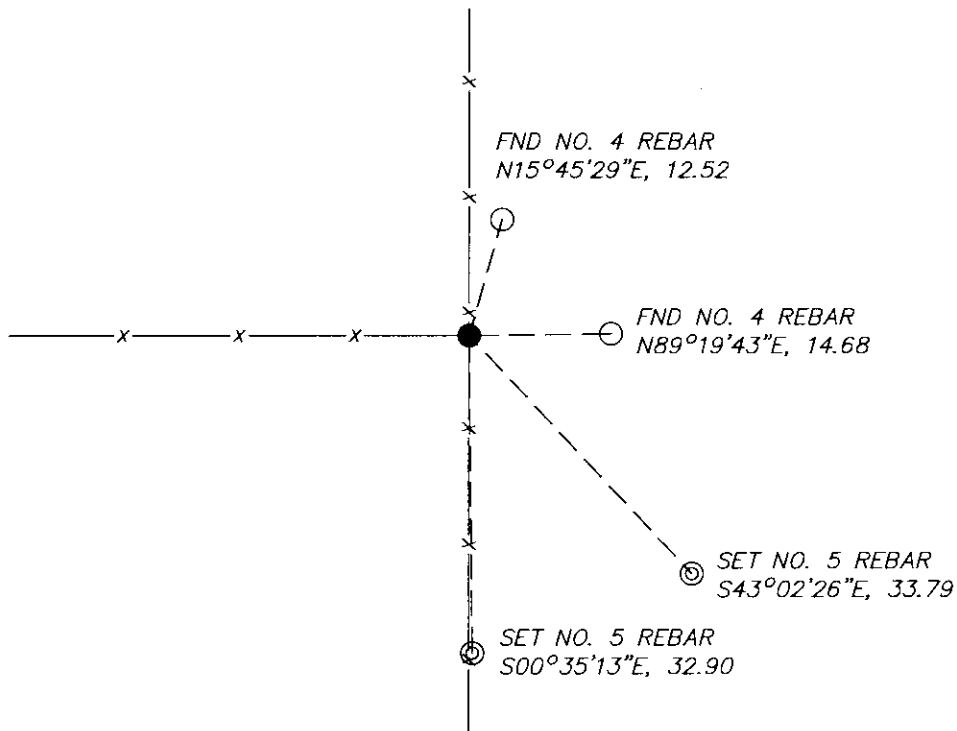
**COORDINATE SYSTEM**

- Geodetic
- State Plane South Zone
- County



Location Diagram, showing corner identification name, bearing and distance references to at least four witness monuments, fence or occupational lines, centerlines of roads, and other site details for reference. Also, show the bearings and distances between the witness monuments.

**North Quarter Corner Section 32, Township 6 North, Range 1 West, Grant County, Wisconsin**



Indicate fd. = found or pl. = placed in the diagram below  
Bearings used in the location sketch and basis for monument location are assumed, unless as noted.  
Monumentation Legend / Description of Corner and Witness Monuments.

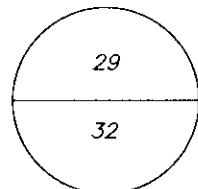
- ⊙ SET NO. 5 REBAR
- FND NO. 4 REBAR
- FND NO. 6 REBAR, 0.5' UP

If applicable, show any discrepancy between the location of the corner as restored or re-established and the location of that corner as previously restored or re-established by bearing and distance. Also, show the bearings and distances between the previous corner and at least two of the witness monuments.

Basis for Monument Location

1. Describe any record evidence, monument evidence, occupational evidence or any other material evidence including traverse measurements that you considered, and whether the monument was found or placed. Explain below, be specific, and attach a separate sheet if necessary.
  
  2. Was the corner.
    - a. found perpetuate
    - b. restored through acceptance of obliterated evidence.
    - c. relocated by witness testimony, or
    - d. accepted as a re-monumented corner of record and maintained with additional monumentation?
  
  3. Was the corner re-established through lost corner proportionate methods? If so, show the method, including the directions and distances to other public land survey corners used as evidence or used in determining the corner location.
- 
1. Westwood Professional Services searched the area and found the #6 iron bar at the corner post and 2 of 4 ties per 1999 Buck tie sheet. Accepting as corner location and set 2 additional ties.
  
  2. D
  
  3. NO

T. 6 N. R. 1 W.  
4 th Principal Meridian  
Corner 110



Certification

I, Michael T. Schinke, certify that the corner location shown on the record was determined by me or under my direction and control and that the U.S. Public Land Survey Monument Record is correct and complete to the best of my knowledge and belief, in accordance with Chapter A-E 7.08 of the Wisconsin Administration Code.

Section Control Data Sheets have been filed in the County Surveyor's office, showing final measurements by direction and distance between all remonumented corners. Section Control information is referenced by the following.

Date	Project ID 0020543.00	Sheet(s) 2 of 2
------	--------------------------	--------------------



x Michael T Schinke

(Registered Land Surveyor Signature and Number)

04/23/2020

Date

Survey Monument Record

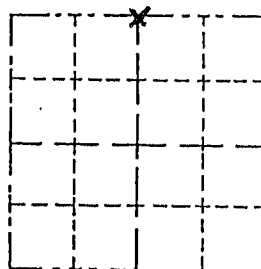
TYPE OF MONUMENT 3/4" Iron Rod  
 STATE PLANE COORDINATES: N \_\_\_\_\_  
 E \_\_\_\_\_  
 ELEVATION — M.S.L. DATUM: \_\_\_\_\_  
 THETA ANGLE: \_\_\_\_\_  
 FIELD BOOK: \_\_\_\_\_  
 PAGE \_\_\_\_\_

CORNER NO. \_\_\_\_\_  
 SECTION 32  
 TOWN 6 NORTH  
 RANGE 1 WEST

BASIS FOR MONUMENT LOCATION

(Use reverse side if necessary)

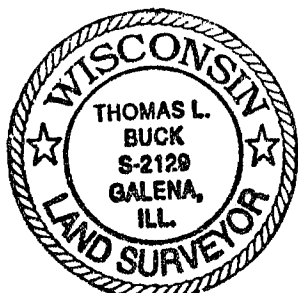
Show info such as: History of corner, with reference to Vol. and pg., dates, surveyor; exact description of monument replaced; if location computed, by taped or EDM traverse; landowner, remarks, etc.



LOCATION  
 (Indicated by "X")

- FOUND PERPETUATED LOCATION
- OBLITERATED EVIDENCE LOCATION
- LOST CORNER (RESTORED BY PROPORTIONATE METHODS)

THIS CORNER WAS SET IN 1979 BY HOVELSTRUD AND RECORDED IN BOOK G PAGE 43 OF SURVEYS. I FIELD LOCATED IT AND EXCEPTED IT AFTER AN E.D.M. TRAVERSE AND LOCATION SURVEY OF SECTIONS 32 + 33



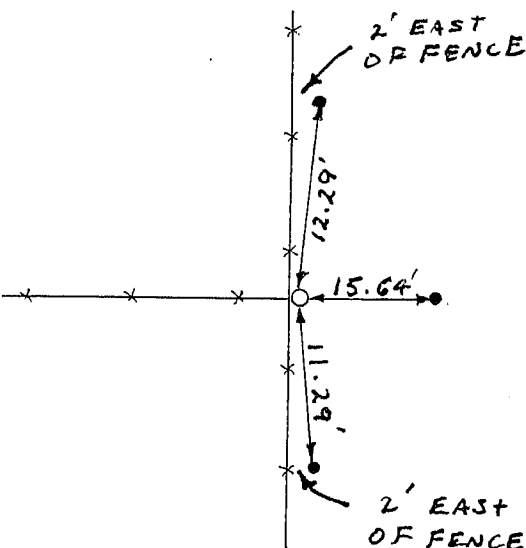
CERTIFIED CORRECT TO THE BEST OF MY KNOWLEDGE AND BELIEF

Thomas Buck  
 Registered Land Surveyor

DATE: 7/30/99

TIE SKETCH

Show at least three (3) ties and monument



NO SCALE

○ = 3/4" I.R. FOUND

● = 1/2 I.R.

—x—x— = EXISTING FENCE