

62107

U.S. PUBLIC LAND SURVEY MONUMENT RECORD - GRANT COUNTY, WI

Section 28, Town 6 North Range 1 West, Town of Wingville (a)

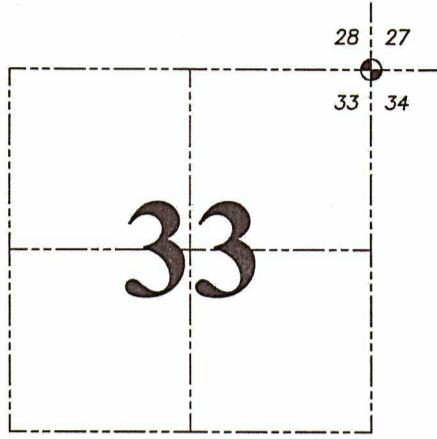
NOTE: This form is intended and designed to fulfill all requirements of the Wisconsin Administrative Code Chapter A-E 7.08, U.S. Public Land Survey Monument Record (3) (a) (b) (c) (d) (e) (f) (g) (h) (i).

CERTIFICATE: (i)

I, Aaron J. Austin, Wisconsin Professional Land Surveyor, do hereby certify that the corner location on this record was determined by me and/or under my direct supervision and that this U.S. Public Land Survey Monument Record is correct and complete to the best of my knowledge and belief.

Dated this 1st day of April, 2021.

Aaron J. Austin
Aaron J. Austin, S-2922



⊕ = CORNER LOCATION

Grant County Coordinates:
NAD 83 (2011)
Northing: 564,240.42
Easting: 878,621.99

HISTORY OF CORNER ESTABLISHMENT:

Original corner was set in 1833 by Sibley.
Michael Shinke set a 3/4" rebar and prepared a Survey Monument Record dated 4/23/2020.

DESCRIPTION OF CORNER EVIDENCE FOUND: (b) (f) (g) (h)

I found the 3/4" Rebar Shinke set. I set four witness corners after I verified the Monument's location with G.P.S. and E.D.M. methods.

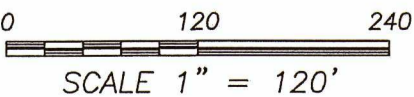
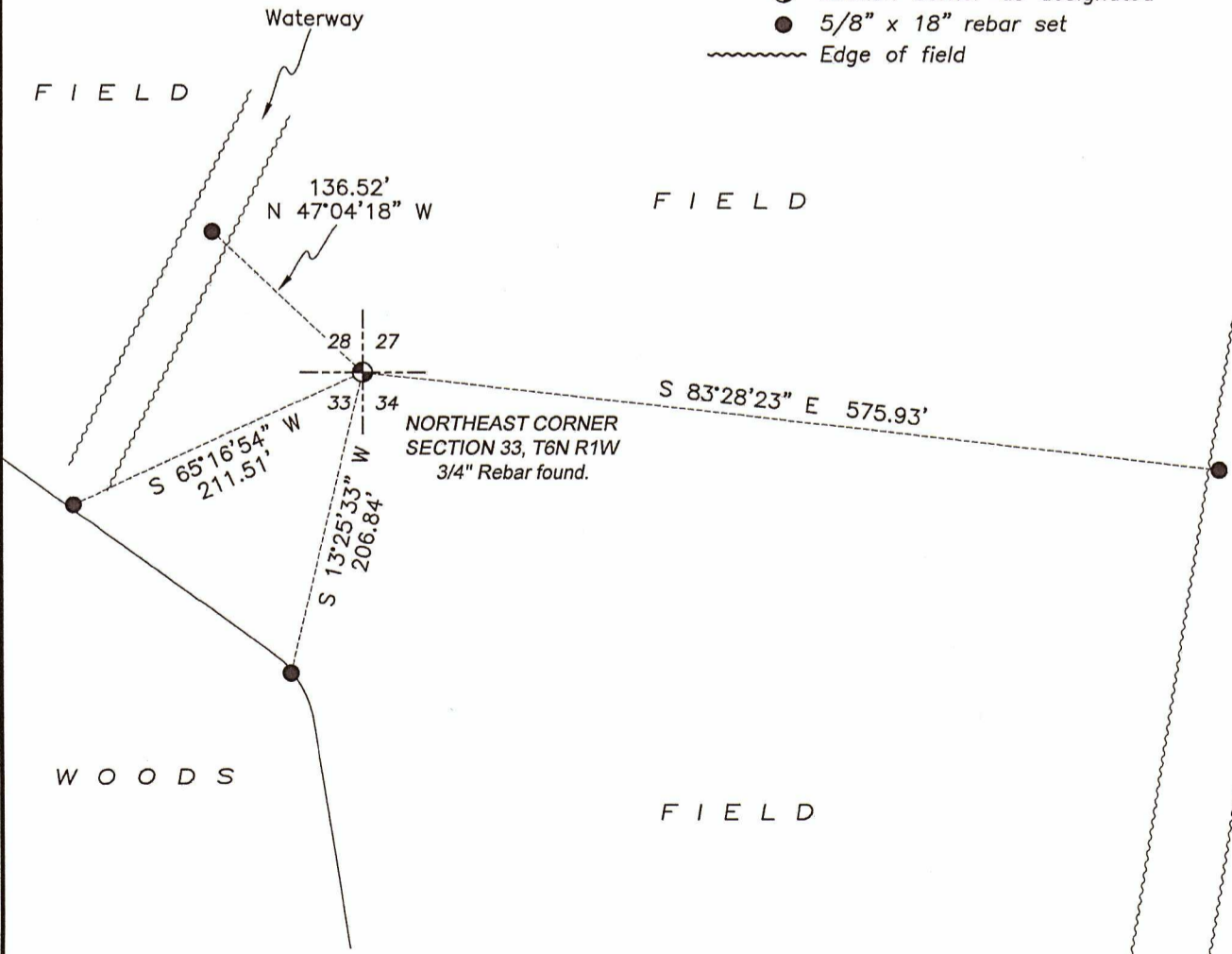
DESCRIPTION OF CORNER AND WITNESS MONUMENTS, references and accessories used to perpetuate the original or re-established location of this corner. (c) (d) (e)

Witnesses to corner location Shane Austin, Owen Austin.
Drawn by Owen Austin

SKETCH:

LEGEND

- ⊕ Section Corner—as designated
- 5/8" x 18" rebar set
- ~~~~~ Edge of field



H:\CRD\21S023
H:\TIE\T6NR1W\107

U.S. PUBLIC LAND SURVEY MONUMENT RECORD

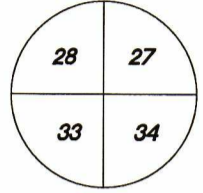
DT1291 2/2006

Wisconsin Department of Transportation

61107

County Name Grant		Name of <input checked="" type="checkbox"/> Township, <input type="checkbox"/> City, <input type="checkbox"/> Village Wingville	
Surveyor Name Michael T. Schinke			
Address, City, State, ZIP Code 7501 College Blvd Suite 101 Overland Park, KS 66210			
Y (Northing) 349884.651	X (Easting) 1837964.422	Latitude	Longitude
Project ID 0020543.00		Coordinate ID	

T. 6 N. - R. 1 W
4 th Principal Meridian
Corner **107**

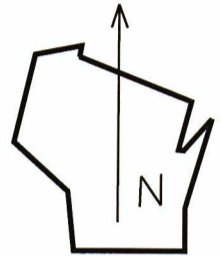


HORIZONTAL DATUM UNITS

- NAD 27 English
- NAD 83 (1991) Metric
- NAD 83 (1997)
- Other- NAD 83 (2011)

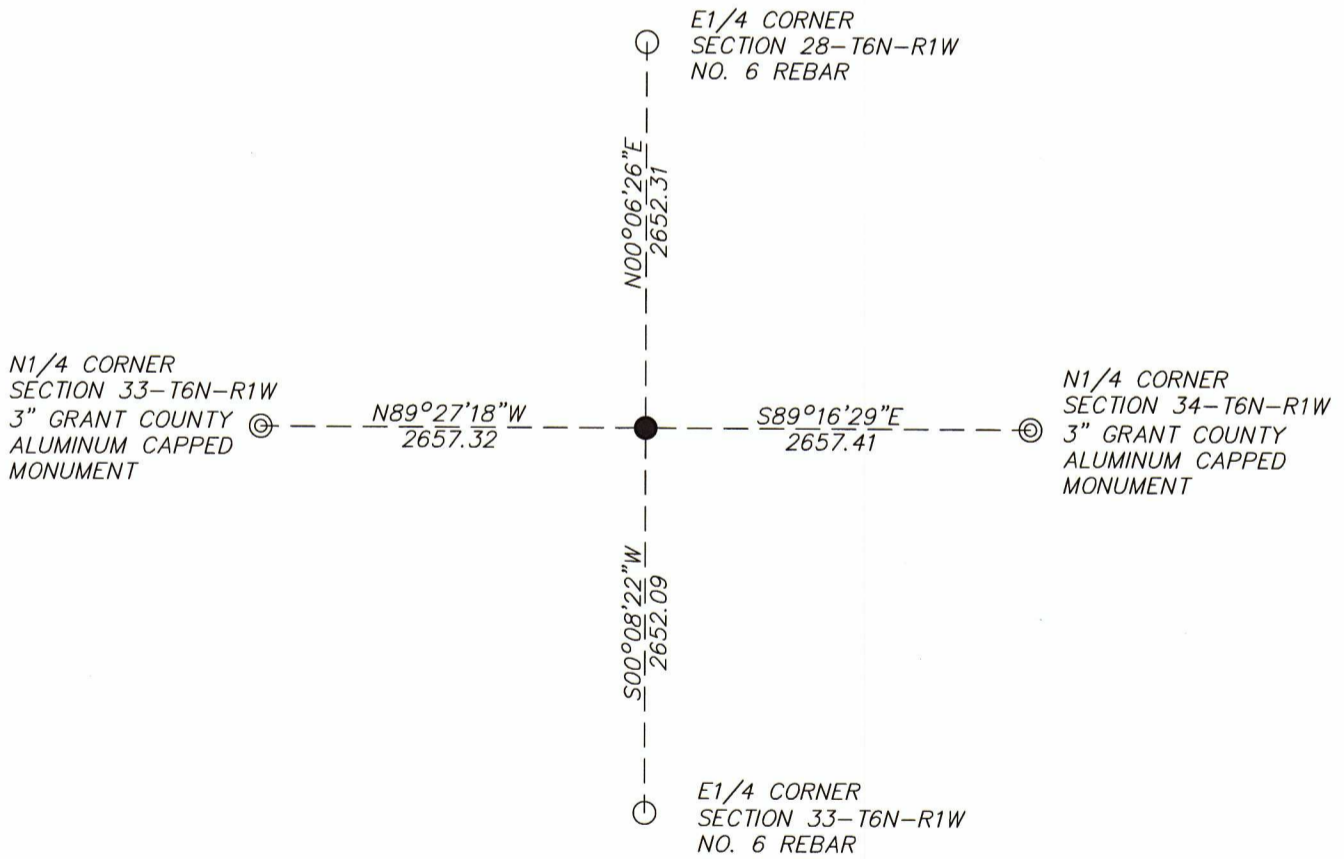
COORDINATE SYSTEM

- Geodetic
- State Plane South Zone
- County



Location Diagram, showing corner identification name, bearing and distance references to at least four witness monuments, fence or occupational lines, centerlines of roads, and other site details for reference. Also, show the bearings and distances between the witness monuments.

Northeast Corner Section 33, Township 6 North, Range 1 West, Grant County, Wisconsin



Indicate fd. = found or pl. = placed in the diagram below
Bearings used in the location sketch and basis for monument location are assumed, unless as noted.
Monumentation Legend / Description of Corner and Witness Monuments.

- ⊙ 3" GRANT COUNTY ALUMINUM CAPPED MONUMENT
- NO. 6 REBAR
- SET NO. 6 REBAR, 18" LONG

If applicable, show any discrepancy between the location of the corner as restored or re-established and the location of that corner as previously restored or re-established by bearing and distance. Also, show the bearings and distances between the previous corner and at least two of the witness monuments.